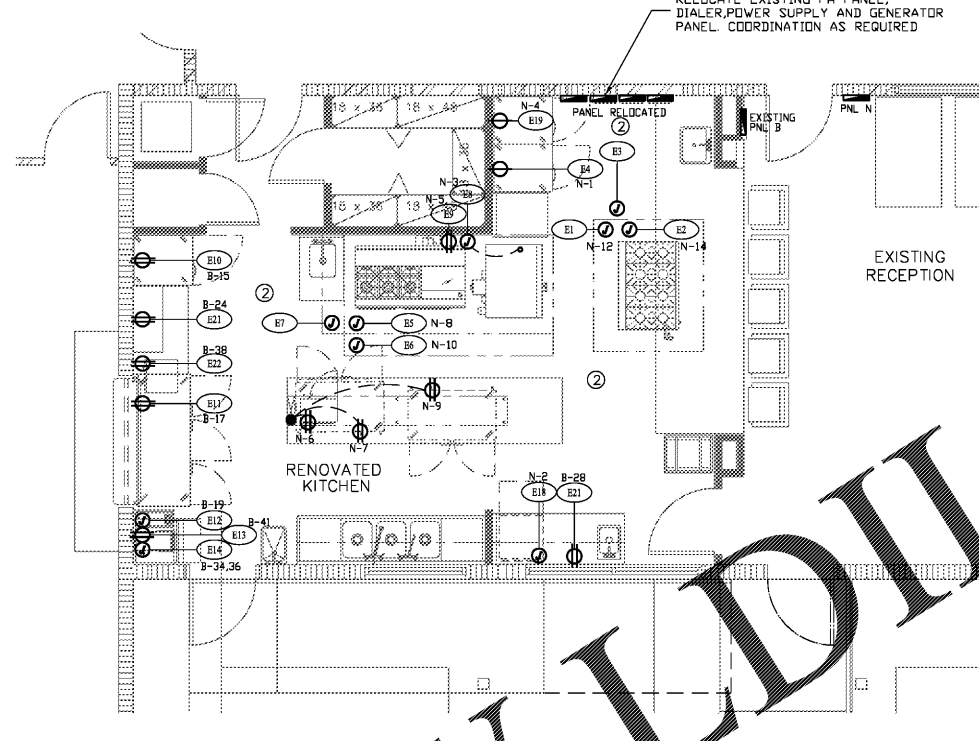


**LIGHTING PLAN**  
SCALE: 1/4"=1'-0"



**POWER PLAN**  
SCALE: 1/4"=1'-0"

**NOTES TO ELECTRICAL CONTRACTOR**

- \* E.C. = REFERS TO ELECTRICAL CONTRACTOR
- \* K.E.C. = REFERS TO KITCHEN EQUIPMENT CONTRACTOR
- \* P.C. = REFERS TO PLUMBING CONTRACTOR

- DISCONNECTS FOR FANS, CONDENSING UNITS AND SUCH ITEMS REQUIRING DISCONNECTS WILL BE SUPPLIED AND INSTALLED BY THE E.C.
- SWITCHES, MOTOR STARTERS FOR EXHAUST AND AIR MAKE-UP SYSTEMS WILL BE SUPPLIED AND INSTALLED BY THE E.C.
- CONTROLS, SUCH AS TIMERS, TEMPERATURE CONTROLS, GAS SHUT OFF VALVES AND RESETS SUPPLIED BY THE E.C. WILL BE INSTALLED BY THE E.C. (AND/OR P.C.)
- SHOULD A ITEM'S REQUIRE A MAIN POINT OF POWER CONNECTION, IT IS THE RESPONSIBILITY OF THE E.C. TO PROVIDE THESE CONNECTIONS.
- IT IS THE RESPONSIBILITY OF THE E.C. TO COMPLY WITH STATE, COUNTY, AND LOCAL ELECTRICAL CODES.

**NOTE TO ARCHITECT**  
AND ADDITIONAL CONVENIENCE RECEPTACLES ARE REQUIRED.

NO EXHAUST HOOD REQUIREMENTS TO BE SHOWN IN MANUFACTURER SHOP DRAWINGS FOR ALL EXHAUST HOOD REQUIREMENTS.

**ELECTRICAL LEGEND**

AFF: ABOVE FINISHED FLOOR  
B/C: BRANCH TO CONNECTION POINT  
SU: STUB UP FINISHED FLOOR  
D/A: DOWN FROM ABOVE  
HP: HORSEPOWER  
KW: KILOWATTS    W: WATTS

- SINGLE RECEPTACLE
- ⊕ DUPLEX RECEPTACLE
- ⊕ SINGLE RECEPTACLE 208/230V (SPECIAL SERVICES)
- ⊕ SPECIAL SERVICES
- ⊕ FLOOR RECEPTACLES
- ⊕ DROP CORD RECEPTACLE
- ⊕ FLOOR RJ45 DATA PORT
- ⊕ JUNCTION BOX
- ⊕ CONDUIT STUB
- ⊕ DISCONNECT
- ⊕ MOTOR
- ⊕ POINT OF CONNECTION
- ⊕ MICRO SWITCH

FAN: 8" MAX STUB UP, 8" MAX STUB OUT  
LIGHT: 8" MAX STUB UP, 8" MAX STUB OUT

- COORDINATE FINAL LOCATION OF CAMERA AND DATA WITH S.D.F. PROVIDE 3/4" CONDUIT WITH PULL STRING AT EACH LOCATION HOME RUN TO MAIN CONTROL LOCATION.
- CONTRACTOR TO PROVIDE COMPLETE SETS OF FIRE ALARM SHOP DWGS - THIS IS TO INCLUDE THE RELOCATION OF PANELS AND THE DEVICES FOR THE SPACE.

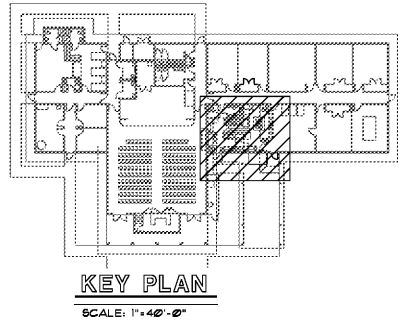
**ELECTRICAL SCHEDULE**

E1: JUNCTION BOX	- 120V/60/1Ø/16.0 AMP DOWN FROM ABOVE	AFF. - (ITEM K3 - EXHAUST HOOD) - (HOOD LIGHTS - SEE MANUFACTURERS SHOP DRAWINGS FOR WIRING REQUIREMENTS)
E2: JUNCTION BOX	- 120V/60/1Ø/16.0 AMP DOWN FROM ABOVE +108" AFF. - (ITEM K4 - EXHAUST HOOD) - (FOR FAN STARTERS TO CONTROL PANEL - SEE MANUFACTURERS SHOP DRAWINGS FOR WIRING REQUIREMENTS)	
E3: JUNCTION BOX	- FIRE SUPPRESSION INTERWIRING - DOWN FROM ABOVE - (ITEM K4 - FIRE SUPPRESSION) - (SEE MANUFACTURERS SHOP DRAWINGS FOR WIRING REQUIREMENTS)	
E4: SINGLE RECEPTACLE	- 115V/60/1Ø/5.8 AMP +72" AFF. - (ITEM K9 - REACH-IN REFRIGERATOR)	
E5: JUNCTION BOX	- 120V/60/1Ø/16.0 AMP DOWN FROM ABOVE +108" AFF. - (ITEM K11 - EXHAUST HOOD) - (HOOD LIGHTS - SEE MANUFACTURERS SHOP DRAWINGS FOR WIRING REQUIREMENTS)	
E6: JUNCTION BOX	- 120V/60/1Ø/16.0 AMP DOWN FROM ABOVE +108" AFF. - (ITEM K11 - EXHAUST HOOD) - (FOR FAN STARTERS TO CONTROL PANEL - SEE MANUFACTURERS SHOP DRAWINGS FOR WIRING REQUIREMENTS)	
E7: JUNCTION BOX	- FIRE SUPPRESSION INTERWIRING - DOWN FROM ABOVE - (ITEM K12 - FIRE SUPPRESSION) - (SEE MANUFACTURERS SHOP DRAWINGS FOR WIRING REQUIREMENTS)	
E8: JUNCTION BOX	- 120V/60/1Ø/9.0 AMP +18" AFF. - (ITEM K13 - CONVECTION OVEN)	
E9: DUPLEX RECEPTACLE	- 115V/60/1Ø/4.0 AMP +18" AFF. - (ITEM K14 - 6 BURNER RANGE W/ GRIDDLE)	
E10: SINGLE RECEPTACLE	- 115V/60/1Ø/5.8 AMP +72" AFF. (VERIFY) - (ITEM K19 - EXISTING REACH-IN REFRIGERATOR)	
E11: DUPLEX RECEPTACLE	- 115V/60/1Ø/8.6 AMP +18" AFF. (VERIFY) - (ITEM K23 - EXISTING WORK TOP REFRIGERATOR)	
E12: JUNCTION BOX	- 120V/60/1Ø/15.0 AMP +50" AFF. (VERIFY) - (ITEM K24 - EXISTING COFFEE MAKER)	
E13: DUPLEX RECEPTACLE	- 120V/60/1Ø/14.0 AMP +50" AFF. (VERIFY) - (ITEM K25 - EXISTING TEA BREWER)	
E14: JUNCTION BOX	- 120V/60/1Ø/6.9 AMP +60" AFF. (VERIFY) - (ITEM K28 - EXISTING ICE MAKER)	
E15: DUPLEX RECEPTACLE	- 115V/60/1Ø/7.3 AMP - ELECTRICAL DOWN FR/ SERVICE CHASE TO RECEPTACLE MOUNTED IN CHEF'S COUNTER - (ITEM K32 - UNDERCOUNTER REFRIGERATOR, REACH-IN)	
E16: DUPLEX RECEPTACLE	- 115V/60/1Ø/7.3 AMP - ELECTRICAL DOWN FR/ SERVICE CHASE TO RECEPTACLE MOUNTED IN CHEF'S COUNTER - (ITEM K34 - UNDERCOUNTER REFRIGERATOR, REACH-IN)	
E17: DUPLEX RECEPTACLE	- 120V/60/1Ø/15.0 AMP (VERIFY) - ELECTRICAL DOWN FR/ SERVICE CHASE TO RECEPTACLE MOUNTED IN CHEF'S COUNTER - (ITEM K35 - EXISTING MICROWAVE)	
E18: JUNCTION BOX	- 120V/60/1Ø/13.4 AMP +18" AFF. - (ITEM K37 - DISH WASHER)	
E19: SINGLE RECEPTACLE	- 115V/60/1Ø/7.1 AMP +72" AFF. - (ITEM K41 - REACH-IN FREEZER)	
E20: OCTAGONAL CONNECTION BOX	- FOR REMOTE FIRE PULL STATION - NOT SHOWN ON DRAWING - (VERIFY WITH ENGINEER & HOOD CONTRACTOR DRAWINGS)	
E21: DUPLEX RECEPTACLE	- 120V/60/1Ø/15.0 AMP +50" AFF. - (CONVENIENCE)	
E22: DUPLEX RECEPTACLE	- 120V/60/1Ø/15.0 AMP +50" AFF. (VERIFY) - (ITEM K22 - EXISTING WARMER)	

**ELECTRICAL LEGEND**

1x4 FLUORESCENT LIGHT	FLUORESCENT STRIP	INTERIOR WALL SCENE	DIMMER SWITCH WITH OCCUPANCY SENSOR THAT SHALL TURN LIGHTING OFF WITHIN 30 MINUTES OF AN OCCUPANT LEAVING A SPACE	SPECIAL RECEPTACLE	FLOOR TELEPHONE/DATA JACK	MOTION SENSOR THAT SHALL TURN LIGHTING OFF WITHIN 30 MINUTES OF AN OCCUPANT LEAVING A SPACE
1x4 FLUORESCENT LIGHT W/ EMERGENCY BALLAST (600 LUMENS MIN) ON 24/7	HI-BAY FIXTURES	EXIT SIGN	EXHAUST FAN MOTOR	JUNCTION BOX	FLOOR TELEPHONE JACK	GROUND FAULT INTERRUPT
2x2 FLUORESCENT LIGHT	EXTERIOR FLOOD LIGHT	EXIT SIGN WITH DIRECTIONAL ARROW	EXHAUST FAN	DUPLEX RECEPTACLE CEILING MOUNTED	FLOOR DATA JACK	ISOLATED GROUND WEATHER PROOF
2x2 FLUORESCENT LIGHT W/ EMERGENCY BALLAST (600 LUMENS MIN) ON 24/7	RECESSED EYEBALL	WALL MOUNTED EMERGENCY LIGHT	DISCONNECT	SWITCHED DUPLEX RECEPTACLE	TV CABLE OUTLET	NIGHT LIGHT - ON 24/7
SURFACE MOUNTED FIXTURES 4x4 LED LIGHT	RECESSED LIGHT	EXIT SIGN/EMERGENCY LIGHT COMBO	SIMPLEX RECEPTACLE	FLOOR DUPLEX RECEPTACLE	SMOKE DETECTOR	NEW
2x4 LED LIGHT W/ EMERGENCY BALLAST (600 LUMENS MIN) SWITCHABLE	SURFACE MOUNTED INCANDESCENT LIGHT	SWITCH	DUPLEX RECEPTACLE	FLOOR QUADRUPLEX RECEPTACLE	SMOKE DETECTOR/CARBON MONOXIDE SENSOR UL LISTED COMBO	EXISTING
	WALL WASH LIGHT	SWITCH WITH OCCUPANCY SENSOR THAT SHALL TURN LIGHTING OFF WITHIN 30 MINUTES OF AN OCCUPANT LEAVING A SPACE	DEDICATED DUPLEX RECEPTACLE	POWER POLE	MULTI-CANDELA FIRE STROBE	EXISTING RELOCATED
	TRACK LIGHT	3 WAY SWITCH WITH OCCUPANCY SENSOR THAT SHALL TURN LIGHTING OFF WITHIN 30 MINUTES OF AN OCCUPANT LEAVING A SPACE	QUADRUPLEX RECEPTACLE	TELEPHONE JACK	MULTI-CANDELA HORN/STROBE	TIME SWITCH CONTROL WEATHER PROOF
	EXTERIOR WALL LIGHT			DATA JACK	PULL STATION	WEATHER PROOF
				TELEPHONE/DATA JACK	ELECTRICAL PANEL	SECURITY CAMERA

\*SOME SYMBOLS MAY NOT BE USE



**locks engineering inc.**  
consulting engineers  
E. PILHUJ P.E. FL REG 49832  
E810N SERIAL NO: 48 AD 4A 48 64 DC 87 99 76 08  
G. INOA ALVAREZ P.E. FL REG 74056

4520 ne 15th ave ste 400, Ft Lauderdale, FL 33334  
TEL (954) 938-1661 FLA. REG. #EB-0003906

RAM DESIGN, INC. RESERVES THE RIGHT TO MODIFY OR CHANGE ANY PART OF THESE PLANS. ANY CHANGES TO THESE PLANS WILL BE MADE BY THE ARCHITECT. THE ARCHITECT'S RESPONSIBILITY IS TO OBTAIN ALL NECESSARY PERMITS AND APPROVALS FROM ALL APPLICABLE AGENCIES. THE CONTRACTOR SHALL BE RESPONSIBLE FOR OBTAINING ALL NECESSARY PERMITS AND APPROVALS FROM ALL APPLICABLE AGENCIES. THE CONTRACTOR SHALL BE RESPONSIBLE FOR OBTAINING ALL NECESSARY PERMITS AND APPROVALS FROM ALL APPLICABLE AGENCIES. THE CONTRACTOR SHALL BE RESPONSIBLE FOR OBTAINING ALL NECESSARY PERMITS AND APPROVALS FROM ALL APPLICABLE AGENCIES.

FLORIDA DEPT. OF PROFESSIONAL REGULATION  
BOARD OF ARCHITECTURE LICENSE #0006498

BOYS & GIRLS CLUB  
FACILITY KITCHEN RENOVATION  
THE SEMINOLE TRIBE OF FLORIDA  
BIG CYPRESS RESERVATION, FLORIDA

IRAM DESIGN, INC. - 10001 N.W. 50TH ST., SUITE 203G, SUNRISE, FLORIDA 33351 9541 748-5661 FAX: 747-0988

REVISIONS

DRAWN BY:

8-22-17  
#17126/17249