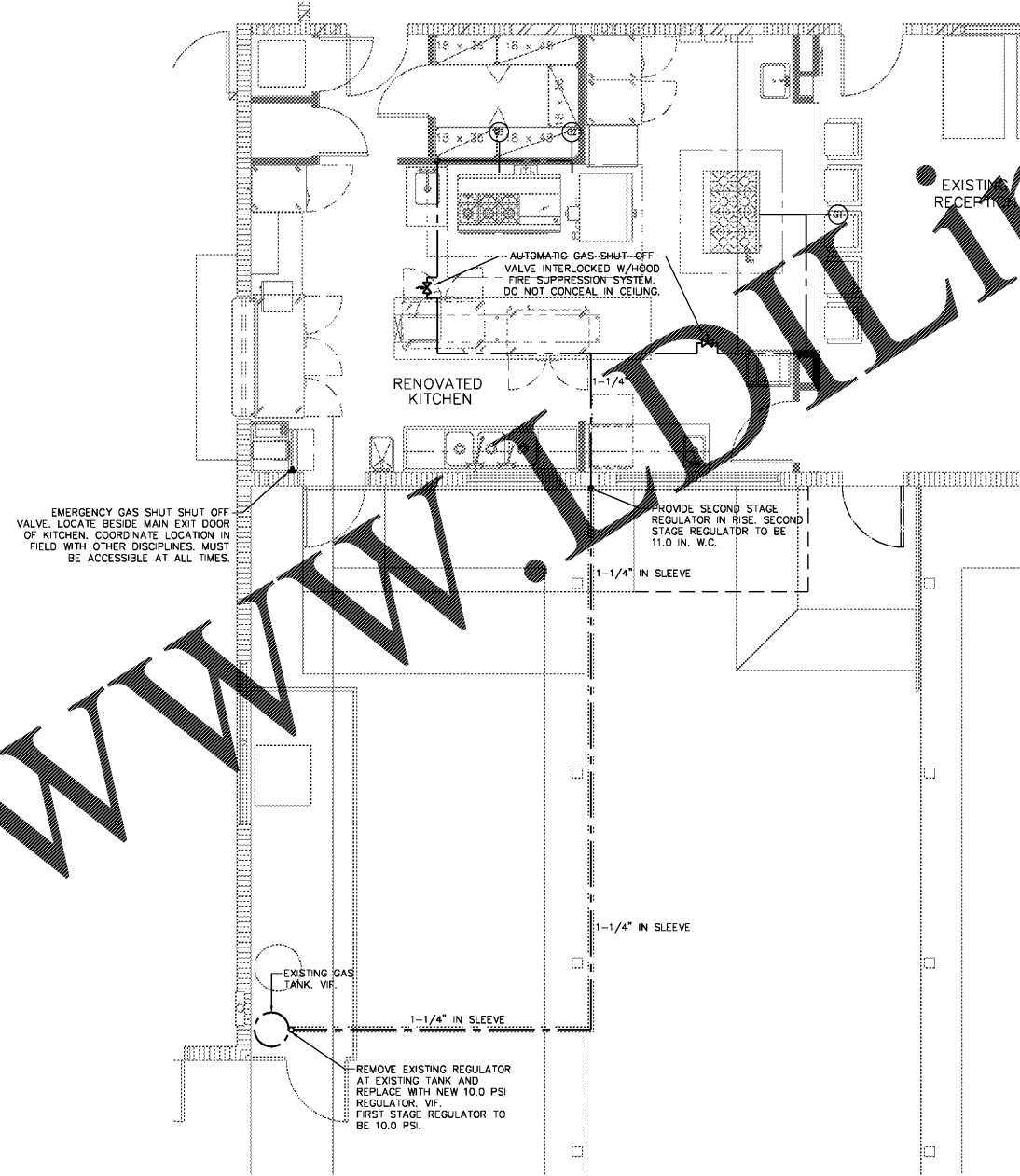
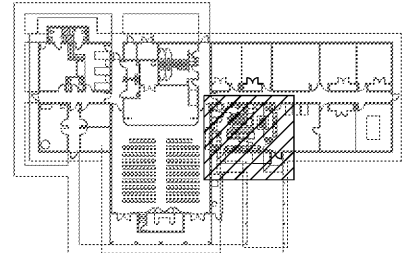


GAS RISER DIAGRAM
SCALE: N.T.S.



GAS PLAN
SCALE: 1/4" = 1'-0"



KEY PLAN
SCALE: 1" = 40'-0"

LINE LEGEND

---	COLD WATER
- - - -	BEER/SODA LINES
----	HOT WATER 110°F
----	HOT WATER 140°F
----	HOT WATER 180°F
---	WASTE
-G-	GREASY WASTE
-G-	EXIST. WASTE
-G-G-	EXIST. GREASY WASTE
----	DEMO PIPING
----	VENT
----	GAS
CO	WALL CLEAN OUT
FCO	FLUSH CLEAN OUT
FD	FLOOR DRAIN
FFD	FUNNEL DRAIN
HD	HUB DRAIN
FS	FLOOR SINK
TP	TRAP PRIMER
SED BCKT	SEDIMENT BUCKET
VTR	VENT THRU ROOF

GAS PIPE SIZING INFORMATION

	FIRST STAGE REGULATOR	SECOND STAGE REGULATOR
GAS TYPE	UNDILUTED PROPANE	UNDILUTED PROPANE
INLET PRESSURE	10.0 PSI**	11.0 IN. W.C.**
PRESSURE DROP	1.0 PSI	0.5 IN. W.C.
TOTAL LOAD (MBTUH)	596	596
LONGEST RUN	93'-1"	45'-11"
SERVICE SIZE	1-1/4"	1-1/4"

* SIZING FITS WITHIN THE PARAMETERS OF ALL CHARTS LISTED. SIZING ACCORD TO:

- FBC, FUEL GAS TABLE 402.4(26) [FIRST STAGE REGULATOR]
- FBC, FUEL GAS TABLE 402.4(28) [SECOND STAGE REGULATOR]
- NFPA 54, TABLE 6.3(a) [FIRST STAGE REGULATOR]
- NFPA 54, TABLE 6.3(b) [SECOND STAGE REGULATOR]
- NFPA 54, TABLE 6.3(c) [FIRST STAGE REGULATOR]
- NFPA 54, TABLE 6.3(d) [SECOND STAGE REGULATOR]

** PRESSURE REGULATORS MAY BE REQUIRED AT ONLY ONE MORE LOCATIONS. ALL EQUIPMENT TO BE SET AS PER MANUFACTURER'S SPECIFICATIONS.

NOTES:

- POLYETHYLENE PIPE TO BE USED OUTSIDE AND UNDERGROUND ONLY, WHERE APPLICABLE.
- ALL INDOOR UNDERGROUND TO BE RECEIVED AND VENTED TO THE EXTERIOR, WHERE APPLICABLE.
- WHERE APPLICABLE, SCHEDULE 40 METALLIC PIPE OUTSIDE AND UNDERGROUND TO BE SLEEVED IN POLYETHYLENE PLASTIC PIPE.

GAS SCHEDULE

#	GAS SIZE	BTU	HEIGHT	GAS TYPE	ITEM
G1	3/4" GAS CONNECTION	240,000	8"	NATURAL GAS	K6 (HOT PLATE)
G2	3/4" GAS CONNECTION	88,000	8"	NATURAL GAS	K13 (CONVECTION OVEN)
G3	1" GAS CONNECTION	268,000	8"	NATURAL GAS	K14 (6 BURNER RANGE W/ GRIDDLE)
TOTAL=		596,000			

bucks engineering inc.
consulting engineers
E. PILHUJ P.E. FL REG 49832
ESIGN SERIAL NO.: 46 AD 4A 48 84 DC 87 99 78 08
G. INOA ALVAREZ P.E. FL REG 74056
4520 NE 18th ave ste 400 Ft. Lauderdale, FL 33334
TEL (954) 938-1881 FLA REG #EB-0009306

BOYS & GIRLS CLUB
FACILITY KITCHEN RENOVATION
BIG CYPRESS RESERVATION, FLORIDA
THE SEMINOLE TRIBE OF FLORIDA

REVISIONS

DRAWN BY:

8-22-17

#17126/17249

P2

FLORIDA DEPT. OF PROFESSIONAL REGULATION
BOARD OF ARCHITECTURE LICENSE #0009409

FLORIDA DEPT. OF PROFESSIONAL REGULATION
BOARD OF ARCHITECTURE LICENSE #0009409