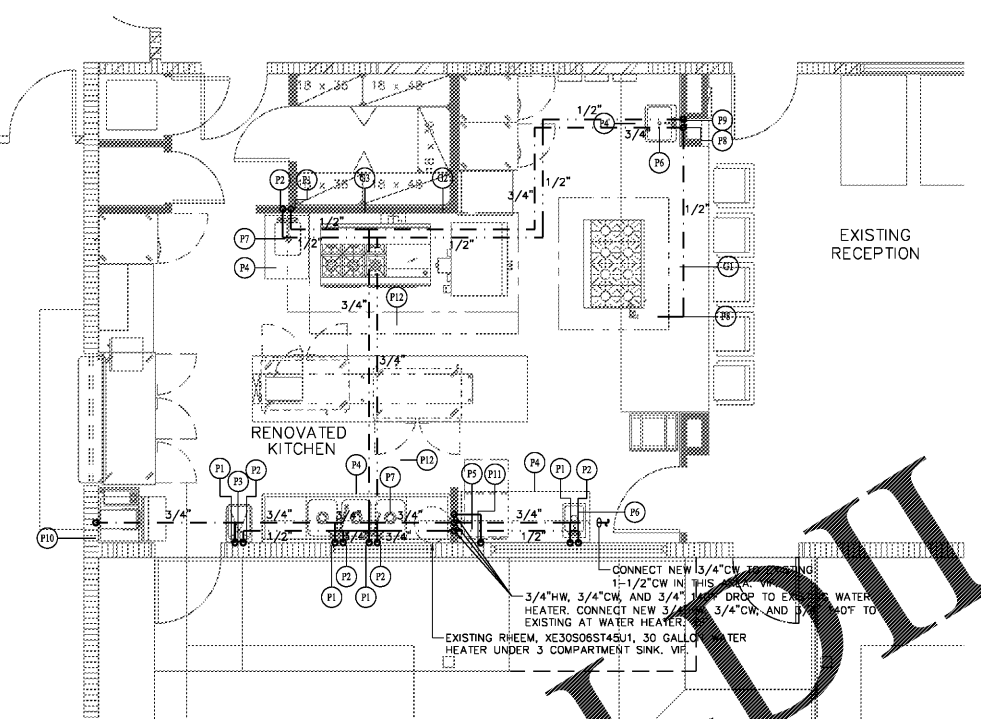
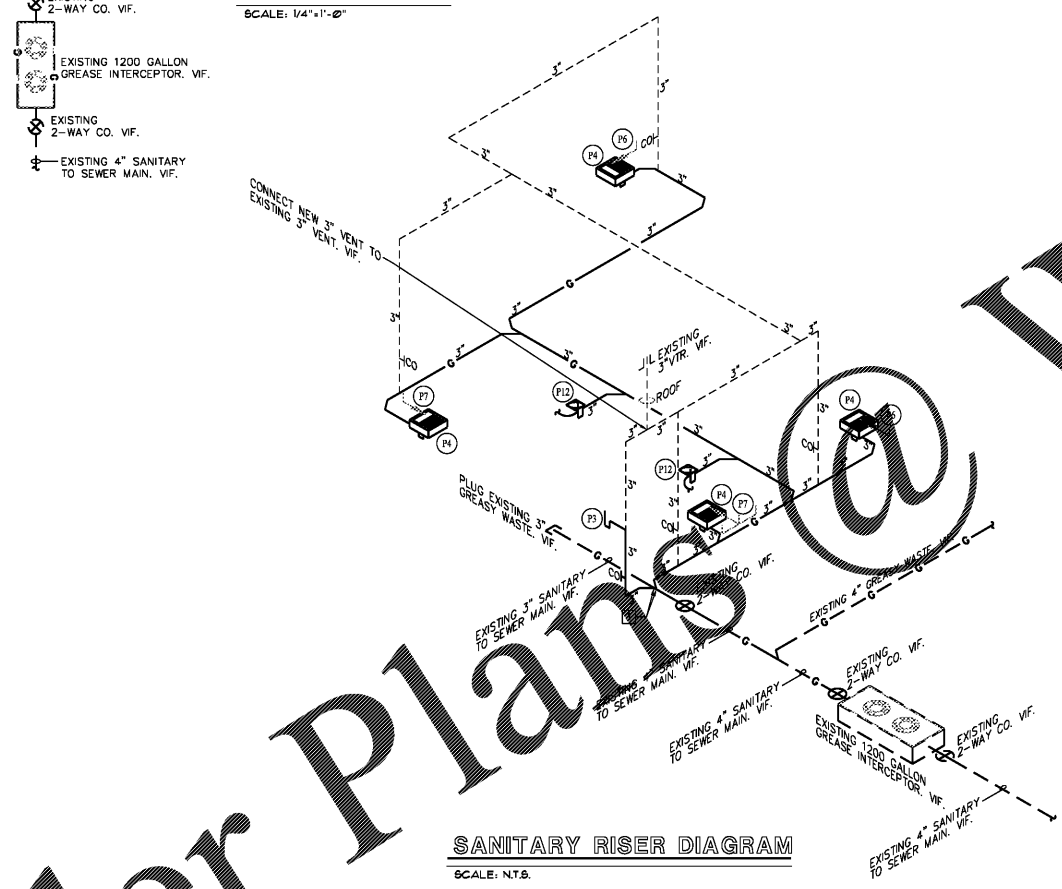


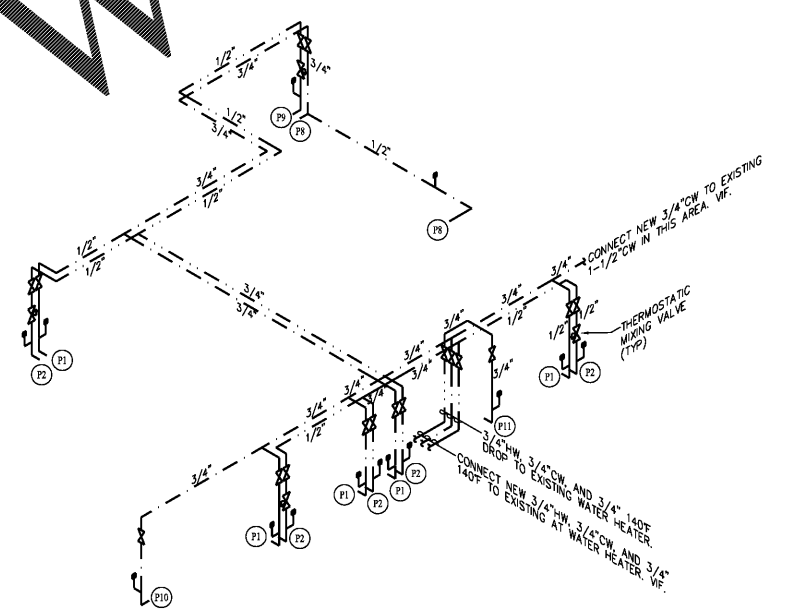
SANITARY PLAN
SCALE: 1/4" = 1'-0"



WATER PLAN
SCALE: 1/4" = 1'-0"



SANITARY RISER DIAGRAM
SCALE: N.T.S.



WATER RISER DIAGRAM
SCALE: N.T.S.

NOTES TO PLUMBING CONTRACTOR

- * P.C. = REFERS TO PLUMBING CONTRACTOR
- * K.E.C. = REFERS TO KITCHEN EQUIPMENT CONTRACTOR
- * E.C. = REFERS TO ELECTRICAL CONTRACTOR

- 1- FAUCETS, DRAINS AND VALVES SUPPLIED BY THE K.E.C. WILL BE INSTALLED BY THE P.C.
- 2- GAS SHUT OFF VALVES SUPPLIED BY THE K.E.C. WILL BE INSTALLED BY THE P.C. (AND / OR E.C.)
- 3- TAIL PIECES, TRAPS, VALVES, "P" TRAPS, VACUUM BREAKERS WILL BE SUPPLIED AND INSTALLED BY THE P.C.
- 4- GAS PRESSURE CONTROL VALVES NOT SUPPLIED BY THE PRODUCT MANUFACTURER WILL BE SUPPLIED AND INSTALLED (AS PER MANUFACTURER'S SPECIFICATION) BY THE P.C.
- 5- IT IS THE RESPONSIBILITY OF THE P.C. TO COMPLY WITH STATE, COUNTY, LOCAL AND FEDERAL CODES.
- 6- ALLOW FOR HEIGHTS OF ALL TRAPS
- 7- EXPOSED VERTICAL OR ROOF VENTS FOR ISLAND OR FREE STANDING EQUIPMENT SHALL BE AVOIDED WHEREVER ALTERNATE MEANS OF VENTING HAVE POSSIBLE APPLICATION

NOTE TO ARCHITECT:
ADD ADDITIONAL FLOOR DRAINS WHERE REQUIRED

DATE: _____
SEE MANUFACTURER SHOP DRAWING'S FOR ALL EXHAUST HOOD REQUIREMENTS

KEYED NOTES

□ CONNECT NEW 3" GREASY WASTE TO EXISTING 3" GREASY WASTE, VF.

PLUMBING SCHEDULE

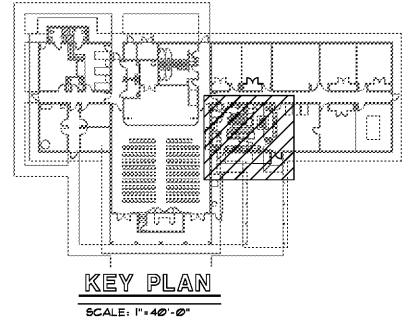
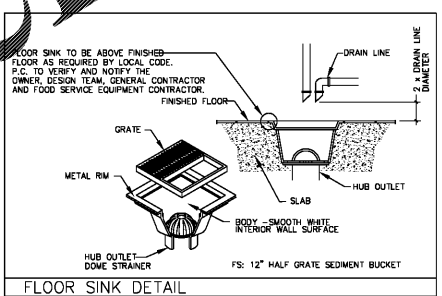
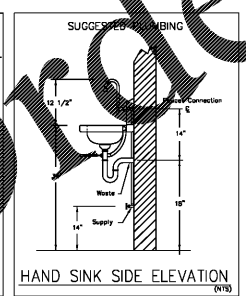
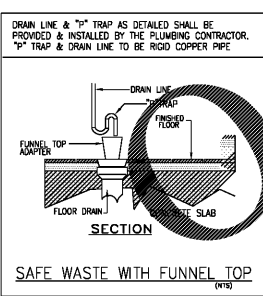
- P1: 1/2" COLD WATER STUB OUT +18" AFF.
- P2: 1/2" HOT WATER STUB OUT +18" AFF.
- P3: 1-1/2" WASTE DIRECT CONNECTION STUB OUT +15" AFF.
- P4: FLOOR SINK
- P5: 3/4" IN-DIRECT DRAIN LINE FROM UNIT TO FLOOR SINK
- P6: 1-1/2" IN-DIRECT DRAIN LINE FROM UNIT TO FLOOR SINK
- P7: 2" IN-DIRECT DRAIN LINE FROM UNIT TO FLOOR SINK
- P8: 1/2" COLD WATER STUB UP +12" AFF.
- P9: 1/2" HOT WATER STUB UP +12" AFF.
- P10: 3/4" COLD WATER STUB OUT +72" AFF. - P.C. TO CONNECT TO INLET ON FILTER AND FROM FILTER TO ICE MACHINE.
- P11: 3/4" MIN. 140°F HOT WATER STUB OUT +72" AFF.
- P12: AREA FLOOR DRAIN

SIZE (INCHES)	MINIMUM SLOPE (INCH PER FOOT)
2-1/2" OR LESS	1/4
3 TO 6"	1/8
8 OR LARGER	1/16

FPC 2017, 704.1: HORIZONTAL DRAINAGE PIPING SHALL BE INSTALLED IN UNIFORM ALIGNMENT AT UNIFORM SLOPES. THE MINIMUM SLOPE OF A HORIZONTAL DRAINAGE PIPE SHALL BE IN ACCORDANCE WITH TABLE 704.1.

LINE LEGEND

---	COLD WATER
---	BEER/SODA LINES
---	HOT WATER 110°F
---	HOT WATER 140°F
---	HOT WATER 180°F
---	WASTE
---	GREASY WASTE
---	EXIST. WASTE
---	EXIST. GREASY WASTE
---	DEMO PIPING
---	VENT
---	GAS
CO	WALL CLEAN OUT
FCO	FLUSH CLEAN OUT
FD	FLOOR DRAIN
FFD	FUNNEL DRAIN
HD	HUB DRAIN
FS	FLOOR SINK
TP	TRAP PRIMER
SED BCKT	SEDIMENT BUCKET
VTR	VENT THRU ROOF



KEY PLAN
SCALE: 1" = 40'-0"

bucks engineering inc.
consulting engineers
E. PILHUJ P.E. FL REG 49832
ESIGN SERIAL NO.: 46 AD 4A 48 84 DC 87 99 76 08
G. INOIA ALVAREZ P.E. FL REG 74056

4520 NE 18th Ave Ste 400 Ft Lauderdale, FL 33334
TEL (954) 938-1881 FLA REG #EB-0009306

BOYS & GIRLS CLUB
FACILITY KITCHEN RENOVATION
BIG CYPRESS RESERVATION, FLORIDA
THE SEMINOLE TRIBE OF FLORIDA

RAM DESIGN, INC. - 10001 N.W. 50TH ST., SUITE 200G, SUNRISE, FLORIDA 33351 748-5661 FAX: 747-0988

FLORIDA DEPT. OF PROFESSIONAL REGULATION
BOARD OF ARCHITECTURE LICENSE #0009409

REVISIONS

DRAWN BY:

8-22-17
#17126/17249