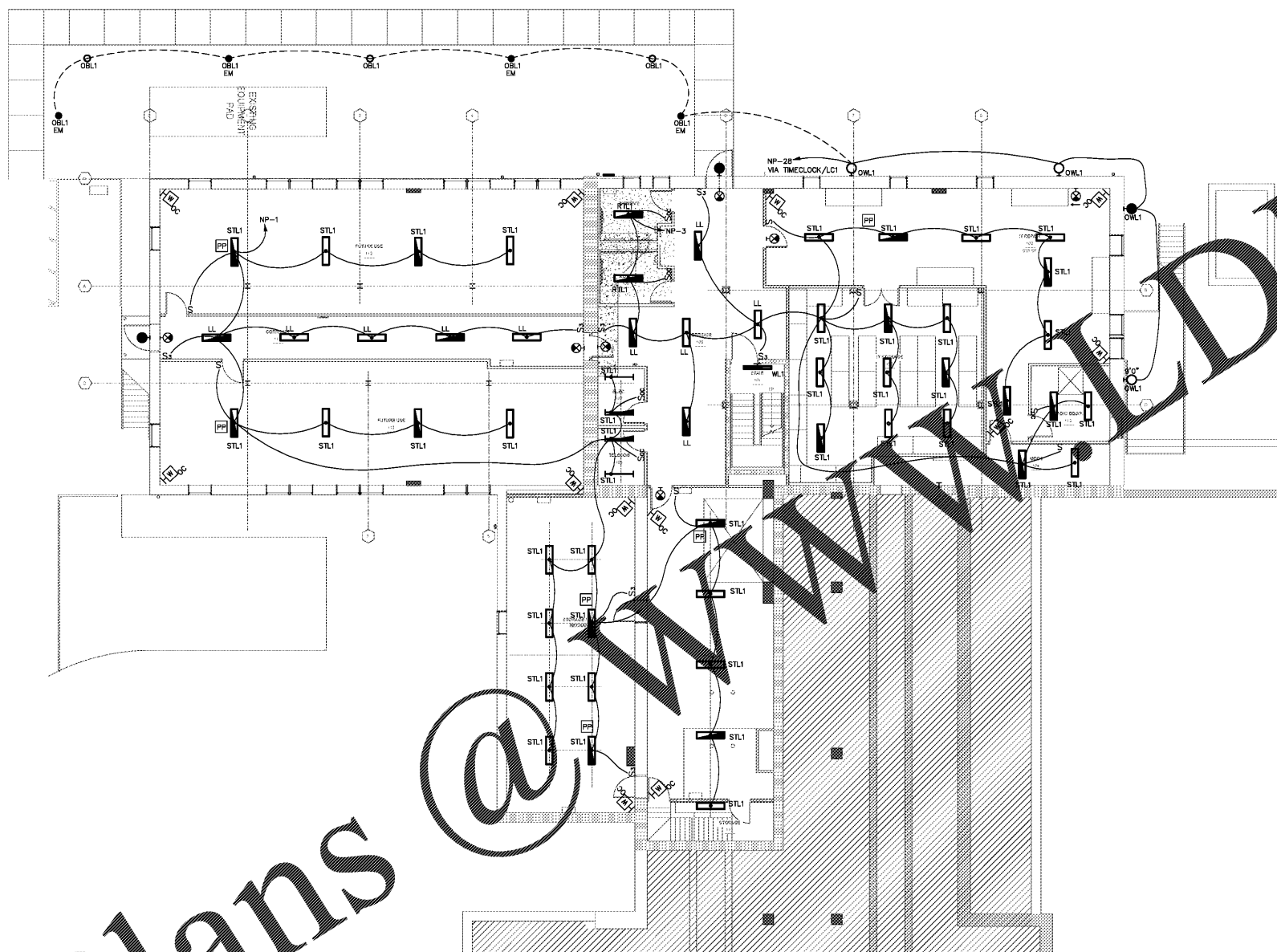


Order Plans



1 GROUND FLOOR PLAN - LIGHTING
1/8" = 1'-0"

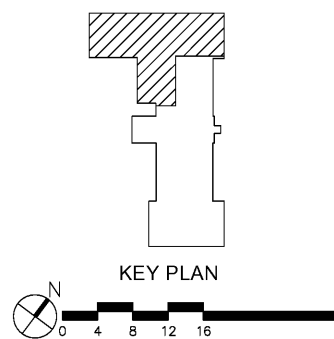
GENERAL NOTES:

- 1. COORDINATE WITH ARCHITECTURAL DRAWINGS FOR ALL LIGHT FIXTURE MOUNTING HEIGHTS.
- 2. CONNECT EMERGENCY AND EXIT LIGHTING TO LOCAL CIRCUIT AHEAD OF SWITCHING.
- 3. ALL EXTERIOR LIGHTS "OWL1" ARE TO BE MOUNTED AT 12' ABOVE GRADE UNLESS NOTED OTHERWISE.
- 4. VERIFY ALL EXTERIOR FIXTURE HEIGHTS/LOCATIONS WITH ARCHITECT PRIOR TO ROUGH-IN.
- 5. VERIFY ALL FIXTURE FINISHES AND COLORS WITH ARCHITECT PRIOR TO ORDERING.

RATED WALL LEGEND

2100 S 001 000 1 00 1 00	1 HOUR FIRE BARRIER
2022 001 000 1 00 1 00 1 00	2 HOUR FIRE BARRIER

REFER TO ARCHITECTURAL DRAWINGS FOR COMPLETE WALL CONSTRUCTION AND RATING INFORMATION.



WESTERN CAROLINA UNIVERSITY
MOORE HALL GROUND FLOOR RENOVATION
CULLOWHEE, NC

SHEET ISSUE:

NO.	DATE	DESCRIPTION	BY
1	03/07/19	ISSUED FOR BID	

PRINCIPAL IN CHARGE: LR
PROJECT ARCHITECT: APR
DRAWN BY:
SHEET TITLE: GROUND FLOOR RENOVATION PLAN - LIGHTING
SHEET NO.: E102
PRJ. NO.: 017384
AGENCY REVIEW ID: 17-1742-01A



memilrazadan.smith
ARCHITECTURE
150 Fayetteville St., Suite 550, Raleigh, NC 27601
1527 South Tryon St., Suite 300, Charlotte, NC 28203
Phone: 919-925-2200 • www.optimaengineering.com
North Carolina License Number: C-03914