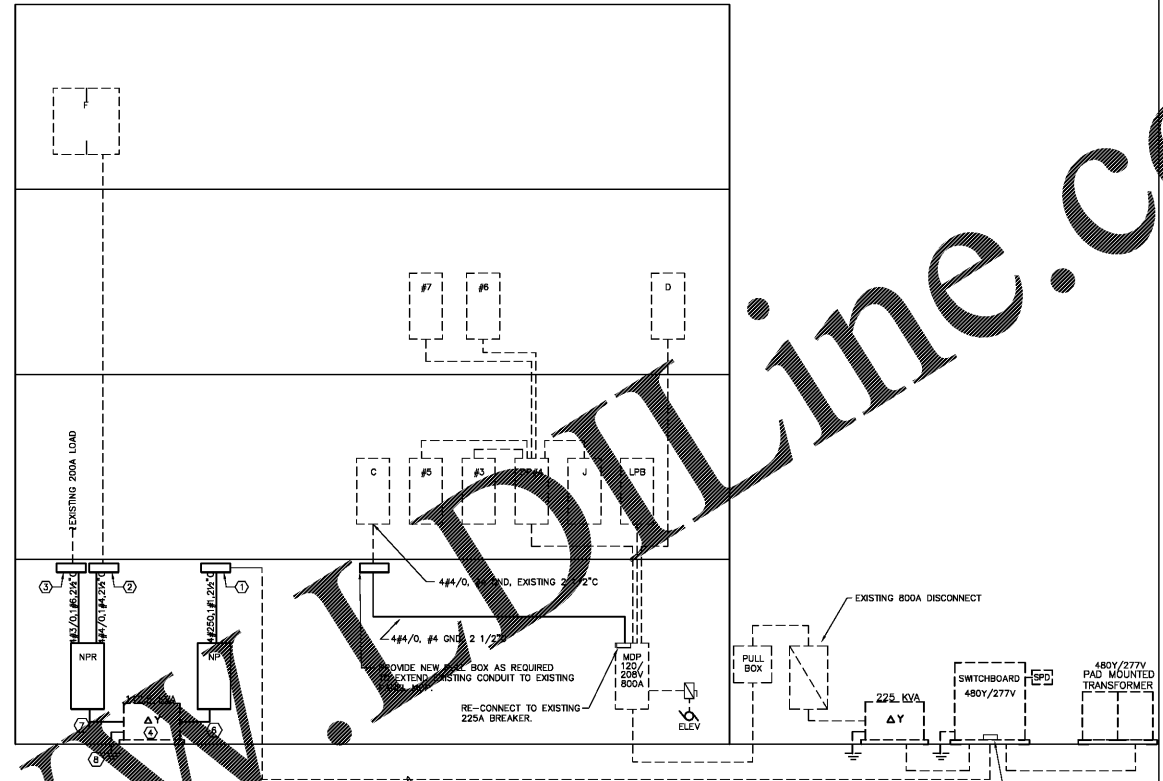


EXISTING POWER RISER DIAGRAM
NO SCALE

- KEYED NOTES:**
1. REMOVE EXISTING PANELBOARD AND EXTEND EXISTING LIVE CIRCUITS TO PANEL NP.
 2. REMOVE EXISTING PANELBOARD AND EXTEND EXISTING LIVE CIRCUITS TO PANEL NPR.
 3. REMOVE EXISTING PANELBOARD.
 4. REMOVE EXISTING PANELBOARD.
 5. REFER TO RADIO RACK CONNECTION SEQUENCE ON E 201 FOR MORE INFORMATION.



RENOVATED POWER RISER DIAGRAM
NO SCALE

- KEYED NOTES:**
1. ALL DASHED ITEMS ARE EXISTING AND TO REMAIN UNLESS OTHERWISE NOTED.
 1. PROVIDE NEW PULL BOX AS REQUIRED TO EXTEND EXISTING CONDUIT TO NEW PANEL NP LOCATION.
 2. PROVIDE NEW PULL BOX AS REQUIRED TO EXTEND EXISTING CONDUIT TO EXISTING LOAD/EQUIPMENT.
 3. PROVIDE NEW PULL BOX AS REQUIRED TO EXTEND EXISTING CONDUIT TO EXISTING LOAD/EQUIPMENT.
 4. EXISTING/RELOCATED TRANSFORMER.

EQUIPMENT AND FEEDER LEGEND
NO SCALE

- KEYED NOTES:**
1. #4#3, #8 GND, 2" C
 2. #4#3/0, #8 GND, 2 1/2" C
 3. 2(#4#3/0, #3 GND, 2 1/2" C)
 4. 3(#4#300CMIL, #1 GND, 3" C)
 5. #2/0, #6 GND, 2" C
 6. 2(#4#3/0, #2/0 GND, 2 1/2" C)
 7. #3/0 GND, 1" C TO BLDG STEEL

NEW PANEL		PANEL: NP		MFR	
VOLTAGE: 277 / 480		3 PHASE		TYPE	
MOUNTING: SURFACE		250 AMP		18,000 AIC	
LOAD	LOAD SERVED	WIRE	TRIP	CTKT NO. (INCHES)	LOAD SERVED
0.81 GROUND FLOOR LIGHTING	12 20	1	1	1	2.70
1.00 GROUND FLOOR LIGHTING	12 20	3	1	2	2.70
0.00 SPARE	20	5	1	4	2.70
0.00 SPARE	20	7	1	6	4.50
4.10 WATER HEATER	12 20	9	1	10	4.50
4.10 WATER HEATER	12 20	11	1	12	4.50
23.25	20	13	1	14	3.00
24.94 112.5 KVA XPMR	200 175	15	1	20	3.00
24.13	20	17	1	18	3.00
SPARE	20	19	1	20	3.00
SPARE	20	21	1	22	3.00
SPARE	20	22	1	24	2.00
SPARE	20	23	1	26	2.00
SPARE	20	24	1	28	2.00
SPARE	20	25	1	29	0.20
SPARE	20	26	1	30	0.20
SPARE	20	27	1	32	0.20
SPARE	20	28	1	34	0.20
SPARE	20	29	1	36	0.20
SPARE	20	30	1	38	0.20
SPARE	20	31	1	40	0.20
SPARE	20	32	1	42	0.20
SPARE	20	33	1	100	SPACE ONLY
83.4					41.0

NEW PANEL		PANEL: NPR		MFR	
VOLTAGE: 120 / 208		3 PHASE		TYPE	
MOUNTING: SURFACE		400 AMP		10,000 AIC	
LOAD	LOAD SERVED	WIRE	TRIP	CTKT NO. (INCHES)	LOAD SERVED
SPARE		22	1	1	0.80
0.72 REC - 107, 108, 110	12 20	3	1	4	0.80
0.72 REC - 111	12 20	5	1	6	0.80
0.80 REC - 105 & 106	12 20	7	1	8	0.80
0.72 REC - 102 (IT)	12 20	9	1	10	1.00
1.00 REC - 102 (IT)	12 20	11	1	12	1.00
0.50 REC - 102 (IT)	12 20	13	1	14	0.75
1.00 REC - 102 (IT)	12 20	15	1	16	1.00
0.95 REC - 102 (IT)	12 20	17	1	18	0.90
1.00 REC - 102 (IT)	12 20	19	1	20	0.90
0.50 REC - 102 (IT)	12 20	21	1	22	1.00
1.14 I/O U-C	12 20	23	1	24	0.75
1.14 I/O U-C	12 20	25	1	26	1.00
0.50 REC - 104 (DEDICATED)	12 20	27	1	28	1.20
1.00 REC - 108 (TELECOM)	12 20	29	1	30	1.20
1.00 REC - 108 (TELECOM)	12 20	31	1	32	0.00
0.50 REC - 109	12 20	33	1	34	0.00
0.72 REC - 110	12 20	35	1	36	0.00
15.00	30	37	1	38	
15.00 EXISTING LOAD	30 200	39	1	40	
15.00	30	41	1	42	
88.4					13.9

WESTERN CAROLINA UNIVERSITY
MOORE HALL GROUND FLOOR RENOVATION
CULLOWHEE, NC



WESTERN CAROLINA UNIVERSITY
MOORE HALL GROUND FLOOR RENOVATION
CULLOWHEE, NC

SHEET ISSUE
NO. DATE DESCRIPTION BY
1 03/07/18 ISSUED FOR BID

PRINCIPAL IN CHARGE LR
PROJECT ARCHITECT APR
DRAWN BY

SHEET TITLE
POWER RISER

SHEET NO. PROJ. NO.
017384
AGENCY REVIEW ID
17-1742-01A

E004

Order Plans @