

SYMBOL SCHEDULE

**2012 NORTH CAROLINA ENERGY CONSERVATION CODE**  
COMMERCIAL ENERGY EFFICIENCY - ELECTRICAL SUMMARY

501.1 METHOD OF COMPLIANCE:  NO SPECIFIC CHECK PROVIDED  
 2012 NCECC CHAPTER 5  20% IMPROVEMENT OVER ASHRAE 90.1-2007  
 NOT APPLICABLE BASED ON PROJECT SCOPE

501.2 APPLICATION COMPLIANCE:  
 506.2.1 EFFICIENT MECH EQUIPMENT  506.2.4 HI EFFICIENCY DOMESTIC HW  
 506.2.2 REDUCED LIG DENSITY  506.2.5 ONSITE RENEWABLE ENERGY  
 506.2.3 ENERGY RECOVERY SYSTEMS  506.2.6 DAYLIGHTING CONTROLS  
 NOT APPLICABLE BASED ON PROJECT SCOPE

505.2 - INTERIOR LIGHTING CONTROLS (MANDATORY REQUIREMENTS):  
 INTERIOR LIGHTING SYSTEMS ARE PROVIDED WITH CONTROLS AS REQUIRED PER SECTION 505.2, EXCEPT WHERE EXEMPT.  
 NOT APPLICABLE

505.3 - TANDEM WIRING (MANDATORY REQUIREMENTS):  
 FLUORESCENT LUMINAIRES LOCATED WITHIN THE SAME AREA ARE TANDEM WIRED AS REQUIRED PER SECTION 505.3, EXCEPT WHERE EXEMPT.  
 NOT APPLICABLE

505.4 - EXIT SIGNS (MANDATORY REQUIREMENTS):  
 INTERNALLY ILLUMINATED EXIT SIGNS DO NOT EXCEED 5 WATTS PER SIDE.  
 NOT APPLICABLE

505.5 - INTERIOR LIGHTING POWER REQUIREMENTS (PRESCRIPTIVE) (NON-EXEMPT):  
 NOT APPLICABLE PER 2012 NCECC 101.4.3, EXCEPTION 1.G.  
 505.5.1 - TOTAL CONNECTED INTERIOR LIGHTING POWER:  
 1,910 WATTS SPECIFIED  
 25% REDUCTION OF SPECIFIED VS. ALLOWED (APPLICABLE IF 506.2.2 IS SELECTED)  
 505.5.2 - TOTAL ALLOWABLE INTERIOR LIGHTING POWER:  
 2,458 WATTS ALLOWED

METHOD OF COMPLIANCE:  
 BUILDING AREA METHOD  SPACE-BY-SPACE METHOD  
 2,458 WATTS ALLOWED

505.6.1 - EXTERIOR BUILDING GROUNDS LIGHTING:  
 LAMPS OPERATING AT GREATER THAN 100 WATTS FOR EXTERIOR BUILDING GROUNDS LUMINAIRES HAVE A MINIMUM EFFICACY OF 60 LUMENS PER WATT, EXCEPT WHERE EXEMPT.  
 NOT APPLICABLE

505.6.2 - EXTERIOR BUILDING LIGHTING POWER (NON-EXEMPT):  
 NOT APPLICABLE  
 TOTAL CONNECTED EXTERIOR LIGHTING POWER:  
 N/A WATTS SPECIFIED  
 TOTAL ALLOWABLE EXTERIOR LIGHTING POWER:  
 N/A WATTS ALLOWED

505.6.3 - SHIELDING OF EXTERIOR BUILDING LIGHTING FIXTURES:  
 ONLY FULLY SHIELDED EXTERIOR BUILDING LIGHTING FIXTURES ARE PROVIDED, EXCEPT WHERE EXEMPT.  
 ALTERNATIVE EXTERIOR BUILDING LIGHTING FIXTURES ARE PROVIDED FOR GREATER ENERGY EFFICIENCY OVER FULLY SHIELDED EXTERIOR BUILDING LIGHTING FIXTURES.  
 NOT APPLICABLE

505.7 - ELECTRICAL ENERGY CONSUMPTION (DWELLING UNITS):  
 SEPARATE TENANT METERING TO DETERMINE ELECTRICAL ENERGY CONSUMPTION HAS BEEN PROVIDED FOR BUILDINGS HAVING INDIVIDUAL DWELLING UNITS.  
 NOT APPLICABLE

**ABBREVIATIONS**

+42" DIMENSION INDICATES HEIGHT ABOVE FINISHED FLOOR AT WHICH CENTER OF DEVICE IS TO BE MOUNTED. SEE PLANS.

3R NEMA 3R  
 AFF ABOVE FINISHED FLOOR  
 AUJ AUTHORITY HAVING JURISDICTION  
 AHU AIR HANDLER UNIT  
 CONDUIT WITH PULL CORD  
 C.B. CIRCUIT BREAKER  
 EC EMPTY CONDUIT WITH PULL CORD  
 E.C. ELECTRICAL CONTRACTOR  
 EWC ELECTRIC WATER COOLER  
 EWH ELECTRIC WATER HEATER  
 FACP FIRE ALARM CONTROL PANEL  
 FPN FUSE PER MANIPULATE  
 LC LIGHTING CONTACTOR  
 M.C. MECHANICAL CONTRACTOR  
 P.C. PLUMBING CONTRACTOR  
 U.G. UNDERGROUND  
 WP WEATHERPROOF  
 S.E. SERVICE ENTRANCE  
 EM EMERGENCY FIXTURE WITH BATTERY OR GEN. BACK-UP  
 ER EXISTING ITEM RELOCATED TO THIS LOCATION.  
 RL EXISTING ITEM TO BE RELOCATED.  
 RM EXISTING ITEM TO REMAIN.  
 RP EXISTING ITEM TO BE REPLACED.  
 RV EXISTING ITEM TO BE REMOVED.  
 Ibc RMS SYMMETRICAL SHORT CIRCUIT CURRENT  
 AIC AMPERE INTERRUPTING CAPACITY (EQUIPMENT RATING)

**DEVICES AND PATHWAYS**

WIRING SYSTEM CONCEALED IN WALL OR CEILING.

WIRING SYSTEM CONCEALED IN OR UNDER SLAB OR UNDERGROUND.

BRANCH CIRCUIT HOMERUN TO PANEL.

CONDUIT TURNED UP TO FLOOR ABOVE.

CONDUIT TURNED DOWN TO FLOOR BELOW.

JUNCTION BOX WITH CONNECTION TO EQUIPMENT SERVED.

JUNCTION BOX FOR HAND DRYER CONNECTION. SEE MOUNTING HEIGHTS DETAIL FOR EXACT HEIGHT. SEE ARCH SHEETS FOR COORDINATION.

JUNCTION BOX FOR AV CONNECTION. COORDINATE REQUIREMENTS WITH AV PLANS.

DUPLEX RECEPTACLE, 20 AMP, 120 VOLT (USE 20 AMP FOR SINGLE RECEPTACLE ON A CIRCUIT). HUBBELL 5392, OR EQUAL.

DUPLEX RECEPTACLE MOUNTED ABOVE COUNTER BACKSPASH, OR AT HEIGHT NOTED. THESE ARE TO BE MOUNTED HORIZONTALLY.

QUAD RECEPTACLE, TWO NEMA 5-20R DUPLEX RECEPTACLES.

STANDARD NEMA 5-20R GFI DUPLEX RECEPTACLE FOR ELECTRIC WATER COOLER. COORDINATE LOCATION WITH PLUMBING CONTRACTOR.

GROUND FAULT RECEPTACLE, NEMA 5-20R DUPLEX. ALL RECEPTACLES INSTALLED OUTSIDE, WITHIN 6' OF A SINK OR IN A KITCHEN SHALL BE GFCI.

ISOLATED GROUND RECEPTACLE, NEMA 5-20R DUPLEX.

WEATHERPROOF RECEPTACLE, NEMA 5-20R GFI DUPLEX. COVER SHALL BE INTERNATELY WEATHERPROOF (CLEAR) OR EQUAL.

DUPLEX SWITCHED TAMPER RESISTANT RECEPTACLE, 20 AMP, 120 VOLT.

SURGE PROTECTION DEVICE (SPD); SEE DETAIL.

SPECIAL OUTLET. SEE PLANS.

MODULAR FURNITURE CONNECTION. PROVIDE DOUBLE-GANG BARRIERS J-BOX FOR POWER & TELE/DATA. EXTEND 1-1/4" EC TO ABOVE ACCESSIBLE CEILING FOR TELE/DATA. CONNECT POWER AS INDICATED.

MOTOR OPERATED DAMPER (MOTOR BY M.C.) COORDINATE CIRCUIT NUMBER WITH PLANS.

GROUNDING BAR PER DIAGRAM.

**FIRE ALARM**

FIRE ALARM MANUAL STATION WITH CLEAR POLYCARBONATE PROTECTIVE COVER. COVER SHALL HAVE INTEGRAL BATTERY BACKED UP AUDIBLE ALARM.

ADA COMPLIANT FIRE ALARM HORN WITH STROBE LIGHT, 75cd, UNLESS OTHERWISE NOTED. WHITE FINISH.

ADA COMPLIANT FIRE ALARM STROBE LIGHT, 75cd, UNLESS OTHERWISE NOTED. WHITE FINISH.

CEILING MOUNTED SMOKE DETECTOR.

DUCT MOUNTED SMOKE DETECTOR. FURNISHED AND CONNECTED BY ELECTRICAL CONTRACTOR. INSTALLED BY MECHANICAL CONTRACTOR. CUTTING OF DUCT, INSTALLATION OF DETECTOR, AND DETERMINATION OF SAMPLING TUBE LENGTH SHALL BE THE MECHANICAL CONTRACTOR. PROVIDE REMOTE INDICATING LIGHT WITH EACH DETECTOR.

CEILING MOUNTED HEAT DETECTOR.

FIRE ALARM REMOTE GRAPHIC ANNUNCIATOR.

ADA COMPLIANT FIRE ALARM HORN STROBE LIGHT, 75cd, UNLESS OTHERWISE NOTED. WHITE FINISH. (CEILING MOUNTED).

ADA COMPLIANT FIRE ALARM STROBE LIGHT, 75cd, UNLESS OTHERWISE NOTED. WHITE FINISH. (CEILING MOUNTED).

FIRE ALARM CONTROL PANEL WITH LOCAL SMOKE DETECTOR.

DUCT DETECTOR REMOTE INDICATING LIGHT, WITH TEST SWITCH.

CEILING MOUNTED CARBON MONOXIDE DETECTOR (CENTRAL SYSTEM CONNECTED).

DUCT DETECTOR REMOTE INDICATING LIGHT WITH TEST SWITCH. 24VDC WITH SUPERVISION BY FIRE ALARM SYSTEM.

**PANELS, DISCONNECTS**

CONNECTION TO MOTOR. STARTER PROVIDED BY OTHERS UNLESS OTHERWISE NOTED.

FRACTIONAL HORSEPOWER MANUAL MOTOR STARTER, WITH OVERLOAD PROTECTION.

NON-FUSED HEAVY DUTY DISCONNECT SWITCH. NUMERALS INDICATE SWITCH RATING. NEMA 1 ENCLOSURE, UNLESS OTHERWISE NOTED.

FUSED HEAVY DUTY DISCONNECT SWITCH. NUMERALS INDICATE SWITCH RATING/FUSE SIZE. NEMA 1 ENCLOSURE, UNLESS OTHERWISE NOTED.

CIRCUIT BREAKER. NUMERALS INDICATE RATING. NEMA 1 ENCLOSURE, UNLESS OTHERWISE NOTED.

PLYWOOD TELEPHONE BACKBOARD. SIZE AS INDICATED ON RISER.

PANELBOARD. SEE SCHEDULE FOR MOUNTING. TOP OF PANEL AT 6'-8" AFF.

DOOR MOTOR CONTROL. MOUNT +48" AFF. CONTROLS SHALL BE DOWN, AND STOP MOUNTED ON 4" SQUARE BOX (FLUSH BOX).

**TELECOMMUNICATIONS**

TELE/DATA OUTLET ABOVE COUNTER OR HEIGHT SPECIFIED. 1" EC TO ABOVE NEAREST ACCESSIBLE CEILING FOR J-HOOK SYSTEM OR TO LOCAL CABLE TRAY (WITHIN 8") AS APPLICABLE WITH PULL STRING. 4" SQUARE BOX WITH A SINGLE-GANG OPENING AND PLASTER RING.

TELE/DATA OUTLET. 1" EC TO ABOVE NEAREST ACCESSIBLE CEILING FOR J-HOOK SYSTEM OR TO LOCAL CABLE TRAY (WITHIN 8") AS APPLICABLE WITH PULL STRING. 4" SQUARE BOX WITH A SINGLE-GANG OPENING AND PLASTER RING.

ABOVE CEILING, STRUCTURE MOUNTED JUNCTION BOX FOR WIRELESS ACCESS. LOW VOLTAGE CABLING. 4" SQUARE BOX WITH A TWO-GANG OPENING. STRIP 1" EC FROM BOX TO J-HOOKS OR CABLETRAY ABOVE ACCESSIBLE CEILING. PROVIDE CABLING, TERMINATIONS, AND FACEPLATE PER SPECIFICATIONS.

**SECURITY**

SECURITY CAMERA. PROVIDE 3/4" CONDUIT TO LOCAL ACCESSIBLE CEILING. PROVIDE DOUBLE GANG JUNCTION BOX WITH SINGLE-GANG OPENING PLATE. PROVIDE PULL STRING.

CARD READER. MOUNT 1/2" CONDUIT. PROVIDE SINGLE GANG JUNCTION BOX AND FOLLOWING. SEE CARD READER DETAIL FOR ADDITIONAL REQUIREMENTS OF PATHWAYS AND CABLING.

**LIGHTING (SEE FIXTURE SCH.)**

FLUORESCENT OR LED LIGHTING FIXTURE. SEE FIXTURE SCHEDULE. SUSPEND FOUR CORNERS WITH WIRE TO STRUCTURE. DO NOT ALLOW GRID ALONE TO SUPPORT FIXTURE.

FLUORESCENT OR LED STRIP FIXTURE.

FLOOR, LED OR H.I.D. LIGHTING FIXTURE.

WALL MOUNTED INCANDESCENT, FLOOR, LED OR H.I.D. LIGHTING FIXTURE.

FLUORESCENT OR LED FIXTURE WITH EMERGENCY BATTERY BALLAST OR DRIVER. PROVIDE 1100 LUMEN INVERTER RATED FOR 90 MINUTE OPERATION. SEE FIXTURE SCHEDULE FOR FIXTURE TYPE. EMERGENCY DEVICE SHALL SUPPLEMENT FIXTURE.

FLUORESCENT OR LED DOWNLIGHT WITH AN EMERGENCY BATTERY BALLAST OR DRIVER. BASED ON 1100 LUMEN INVERTER (SEE SCHEDULE FOR FIXTURE LUMEN MAXIMUM). EMERGENCY (50% MAX. SUPPLEMENT FIXTURE.

EXIT LIGHT WITH ARROWS AND NUMBERS OF FACES AS INDICATED ON PLANS. 90 MIN BATTERY BACKUP. SEE LIGHTING FIXTURE SCHEDULE.

EMERGENCY BATTERY PACK FIXTURE, 90 MINUTE EMERGENCY INTEGRAL BATTERY. SEE LIGHTING FIXTURE SCHEDULE.

EMERGENCY BATTERY PACK/EXIT COMBO FIXTURE WITH 90 MINUTE BATTERY BACKUP. SEE FIXTURE SCHEDULE.

EXTERIOR EMERGENCY FIXTURE WITH EMERGENCY BALLAST OR DRIVER. PROVIDE 1100 LUMEN INVERTER RATED FOR 90 MINUTE OPERATION. SEE FIXTURE SCHEDULE FOR FIXTURE TYPE. EMERGENCY DEVICE SHALL SUPPLEMENT FIXTURE.

SINGLE HEAD POLE FIXTURE. SEE FIXTURE SCHEDULE.

DOUBLE HEAD POLE FIXTURE. SEE FIXTURE SCHEDULE.

LIGHT BOLLARD OR POLE TOP FIXTURE. SEE FIXTURE SCHEDULE.

FLOODLIGHT. SEE FIXTURE SCHEDULE.

S SINGLE POLE SWITCH, 20 AMP, 120/277 VOLT. NUMBER AH 1221, OR EQUAL BY HUBBELL, LEVITON, AND PASS & SEYMOUR.

S<sub>2</sub> DOUBLE POLE SWITCH, 20 AMP, 120/277 VOLT. NUMBER 1222, OR EQUAL.

S<sub>3</sub> THREE WAY SWITCH, 20 AMP, 120/277 VOLT. COOPER 1223, THREE WAY SWITCH, 20 AMP, 120/277 VOLT. NUMBER 1223, OR EQUAL BY HUBBELL, LEVITON, AND PASS & SEYMOUR.

S<sub>4</sub> FOUR WAY SWITCH, 20 AMP, 120/277 VOLT. COOPER 1224, OR EQUAL.

S<sub>5</sub> PILOT LIGHT SWITCH.

S<sub>6</sub> KEY OPERATED SWITCH.

S<sub>7</sub> DIMMER SWITCH, 20 AMP, 120/277 VOLT. EQUAL TO INTERNATIONAL FF SERIES.

S<sub>8</sub> 3-POSITION ROCKER SWITCH 120/277 VOLT. NORMAL POSITION SINGLE POLE DOUBLE THROW (CENTER OFF) MOUNTED CONTINGENT ON 5085-2-W OR APPROVED EQUAL (MAX. MAX. LOW VOLTAGE (V): 5000-2W, E.C. TO VERIFY WITH SPECIFIED TYPE.

S<sub>9</sub> DIMMER SWITCH, ILLUMINON SERIES. EQUAL. VERIFY LOAD ON CIRCUIT AND MATCH DIMMER TYPE TO LOAD AND DEVICE QUANTITY. PROVIDE DOUBLE GANG J-BOX WITH EMERGENCY BATTERY BACKUP. PROVIDE DIMMING SWITCH AS RECOMMENDED BY LIGHTING MANUFACTURER. MATCH SWITCH TYPE TO SOURCE (LED, FLUORESCENT, INCANDESCENT), WAITAGE, AND QUANTITY.

S<sub>10</sub> LOW VOLTAGE DIMMER SWITCH MOUNTED IN FLUSH JUNCTION BOX. TYPE DOUBLE THROW. PROVIDE THROU HOLES IN ACTUATION SWITCH. PROVIDE JUNCTION BOX AND JUMPER FROM LOCAL LIGHTING CIRCUIT TO LOW VOLTAGE TRANSFORMER/MOTOR ON TUBULAR SKYLIGHT. PROVIDE 20 GAUGE (4) CONDUCTOR CABLE IN 3/4" FROM SWITCH TO BATTLE CONTROLLER. PROVIDE 20 GAUGE JUMPER FROM EACH SUCCESSIVE CONTROL UNIT TO DAISY CHAIN MULTIPLE SKYLIGHT BATTLES.

S<sub>11</sub> INDICATES TWO LEVEL SWITCHING. SWITCH OUTER TWO LAMPS OF FIXTURES TOGETHER AND THE INNER LAMP(S) TOGETHER.

S<sub>12</sub> WALL MOUNTED VACUANCY SENSOR AND SWITCH (MANUAL ON/AUTOMATIC OFF). INFRARED TECHNOLOGY, 120/277 RATED. SENSOR SWITCH WSK, WATT STOPPER PH-301, LEVITON, COOPER OR EQUAL.

S<sub>13</sub> CEILING MOUNTED OCCUPANCY SENSOR, DUAL TECHNOLOGY. SENSOR SWITCH CM P01-10, WATT STOPPER #01-300, COOPER OAC-DT OR EQUAL.

S<sub>14</sub> CEILING MOUNTED OCCUPANCY SENSOR, INFRARED TECHNOLOGY. WATT STOPPER #01-300-1 OR EQUAL.

S<sub>15</sub> CEILING MOUNTED OCCUPANCY SENSOR, ULTRASONIC WATT STOPPER #WT-2255 OR EQUAL.

S<sub>16</sub> WALL MOUNTED OCCUPANCY SENSOR, DUAL TECHNOLOGY. SENSOR SWITCH WY-P01, WATT STOPPER #01-200, LEVITON, GREENGATE OR EQUAL. CONICAL PATTERN, MOUNT AS CLOSE TO CORNER OF ROOM AS POSSIBLE. MOUNT 10" AFF OR 8" BELOW CEILING (IF LOWER THAN 10').

S<sub>17</sub> CEILING MOUNTED VACUANCY SENSOR, DUAL TECHNOLOGY. SENSOR SWITCH, WATT STOPPER, COOPER OR EQUAL.

S<sub>18</sub> WALL MOUNTED OCCUPANCY SENSOR AND SWITCH. INFRARED TECHNOLOGY WITH NEUTRAL, 120/277V RATED. WATT STOPPER #WS-250, OR EQUAL BY SENSOR SWITCH, AND LEVITON.

S<sub>19</sub> WALL MOUNTED OCCUPANCY SENSOR AND SWITCH. INFRARED TECHNOLOGY, WATT STOPPER #PW-200, SENSOR SWITCH, COOPER CONTROLS OR EQUAL. FOR INBOARD/OUTBOARD SWITCHING OR STEP BALLAST. SWITCH SHALL BE INSTALLED IN SINGLE GANG BOX, 120/277V RATED.

S<sub>20</sub> LIGHT LEVEL SENSOR WATT STOPPER LS-101 OR APPROVED EQUAL.

S<sub>21</sub> PHOTO CONTROL, EXTERIOR, MOUNT FACING NORTH.

S<sub>22</sub> CEILING MOUNTED OCCUPANCY SENSOR POWER PACK. SENSOR SWITCH PP-20, WATT STOPPER #01-100, COOPER SP-20, OR EQUAL.

S<sub>23</sub> SWITCHING DEVICE INDICATOR, INDICATES SWITCH AND ASSOCIATED FIXTURES CONTROLLED BY DEVICE.

S<sub>24</sub> EXTERIOR MOUNTED LINE VOLTAGE MOTION SENSOR. WATT STOPPER #EN-100 (90 DEGREE) OR EQUAL.

S<sub>25</sub> GENERATOR TRANSFER DEVICE FOR NORMAL LIGHTING CONTROL. SEE EMERG. LTO RELAY DETAIL. CONNECT TO LOCAL LIFE SAFETY BRANCH LIGHTING CIRCUIT. WHERE BI-LEVEL SWITCH CIRCUITING IS SHOWN FOR LIGHTING FIXTURE, PROVIDE A MINIMUM OF TWO GTO'S FOR LIGHTING FIXTURE(S). BASED ON BODINE GTO, EQUALS BY: DUAL LITE, IOTA, CHLORIDE, SCHNEIDER ELECTRIC.

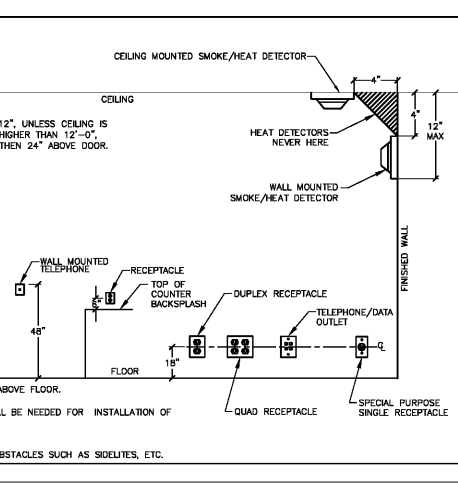
S<sub>26</sub> GENERATOR TRANSFER DEVICE FOR NORMAL LIGHTING CONTROL. SEE EMERG. LTO RELAY DETAIL. CONNECT TO LOCAL LIFE SAFETY BRANCH LIGHTING CIRCUIT. BASED ON BODINE GTO20A, EQUALS BY: DUAL LITE, IOTA, CHLORIDE, SCHNEIDER ELECTRIC.

**TELECOMMUNICATIONS**

TELE/DATA OUTLET ABOVE COUNTER OR HEIGHT SPECIFIED. 1" EC TO ABOVE NEAREST ACCESSIBLE CEILING FOR J-HOOK SYSTEM OR TO LOCAL CABLE TRAY (WITHIN 8") AS APPLICABLE WITH PULL STRING. 4" SQUARE BOX WITH A SINGLE-GANG OPENING AND PLASTER RING.

TELE/DATA OUTLET. 1" EC TO ABOVE NEAREST ACCESSIBLE CEILING FOR J-HOOK SYSTEM OR TO LOCAL CABLE TRAY (WITHIN 8") AS APPLICABLE WITH PULL STRING. 4" SQUARE BOX WITH A SINGLE-GANG OPENING AND PLASTER RING.

ABOVE CEILING, STRUCTURE MOUNTED JUNCTION BOX FOR WIRELESS ACCESS. LOW VOLTAGE CABLING. 4" SQUARE BOX WITH A TWO-GANG OPENING. STRIP 1" EC FROM BOX TO J-HOOKS OR CABLETRAY ABOVE ACCESSIBLE CEILING. PROVIDE CABLING, TERMINATIONS, AND FACEPLATE PER SPECIFICATIONS.



**ABBREVIATIONS**

+42" DIMENSION INDICATES HEIGHT ABOVE FINISHED FLOOR AT WHICH CENTER OF DEVICE IS TO BE MOUNTED. SEE PLANS.

3R NEMA 3R  
 AFF ABOVE FINISHED FLOOR  
 AUJ AUTHORITY HAVING JURISDICTION  
 AHU AIR HANDLER UNIT  
 CONDUIT WITH PULL CORD  
 C.B. CIRCUIT BREAKER  
 EC EMPTY CONDUIT WITH PULL CORD  
 E.C. ELECTRICAL CONTRACTOR  
 EWC ELECTRIC WATER COOLER  
 EWH ELECTRIC WATER HEATER  
 FACP FIRE ALARM CONTROL PANEL  
 FPN FUSE PER MANIPULATE  
 LC LIGHTING CONTACTOR  
 M.C. MECHANICAL CONTRACTOR  
 P.C. PLUMBING CONTRACTOR  
 U.G. UNDERGROUND  
 WP WEATHERPROOF  
 S.E. SERVICE ENTRANCE  
 EM EMERGENCY FIXTURE WITH BATTERY OR GEN. BACK-UP  
 ER EXISTING ITEM RELOCATED TO THIS LOCATION.  
 RL EXISTING ITEM TO BE RELOCATED.  
 RM EXISTING ITEM TO REMAIN.  
 RP EXISTING ITEM TO BE REPLACED.  
 RV EXISTING ITEM TO BE REMOVED.  
 Ibc RMS SYMMETRICAL SHORT CIRCUIT CURRENT  
 AIC AMPERE INTERRUPTING CAPACITY (EQUIPMENT RATING)



Order Plans @ WWW.MEMPHISPLANS.COM

memphiscityplanning.com

memphiscityplanning.com

optima engineering

150 Fayetteville St., Suite 550, Raleigh, NC 27601  
 1527 South Tryon St., Suite 300, Charlotte, NC 28203  
 Phone: 919-925-2200 • www.optimaengineering.com  
 North Carolina License Number: C-2914

WESTERN CAROLINA UNIVERSITY

MOORE HALL GROUND FLOOR RENOVATION

CULLOWHEE, NC

WESTERN CAROLINA UNIVERSITY

MOORE HALL GROUND FLOOR RENOVATION

CULLOWHEE, NC

SHEET ISSUE

NO.	DATE	DESCRIPTION	BY
1	03/07/18	ISSUED FOR BID	

PRINCIPAL IN CHARGE: LR  
 PROJECT ARCHITECT: APR  
 DRAWN BY:  
 SHEET TITLE: ELECTRICAL SYMBOL SCHEDULE

SHEET NO: E001  
 PROJ NO: 017384  
 AGENCY REVIEW ID: 17-1742-01A

1 OF 10  
 OPTIMA # 17-3325