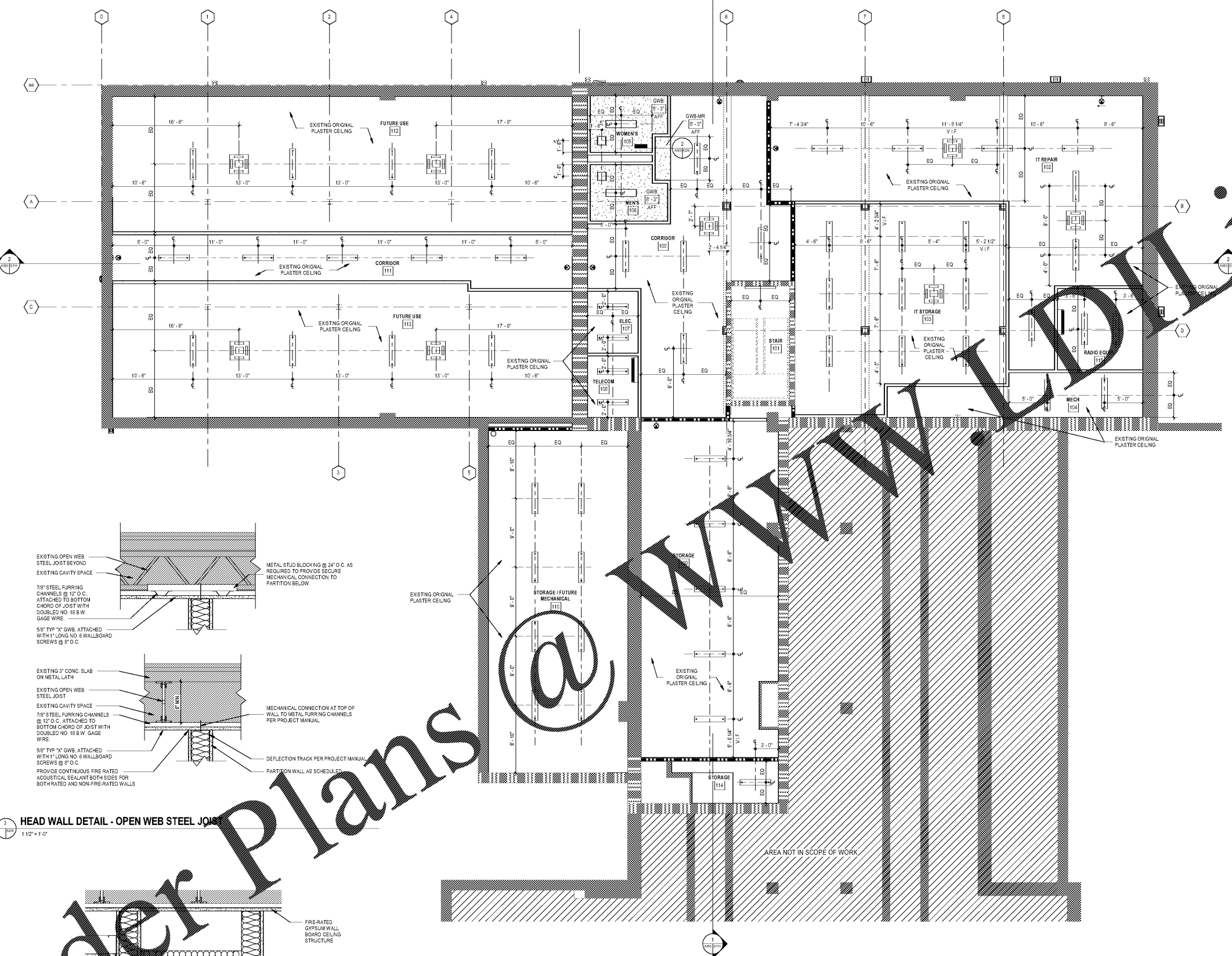
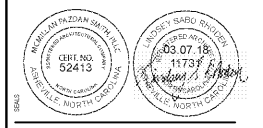
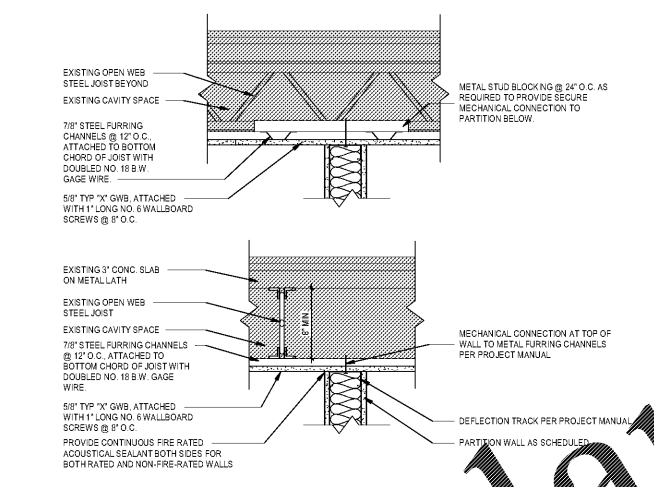


1. ALL WORK SHALL BE IN ACCORDANCE WITH THE 2018 INTERNATIONAL RESIDENTIAL CODE BOOK (IRC) AND THE 2018 INTERNATIONAL BUILDING CODE (IBC).  
 2. ALL WORK SHALL BE IN ACCORDANCE WITH THE 2018 INTERNATIONAL MECHANICAL AND PLUMBING CODE (IMC) AND THE 2018 INTERNATIONAL ELECTRICAL CODE (IEC).  
 3. ALL WORK SHALL BE IN ACCORDANCE WITH THE 2018 INTERNATIONAL FIRE AND ALARM CODE (IFAC) AND THE 2018 INTERNATIONAL SCHEDULE OF MATERIALS (ISM).  
 4. ALL WORK SHALL BE IN ACCORDANCE WITH THE 2018 INTERNATIONAL ENERGY CONSERVATION CODE (IECC) AND THE 2018 INTERNATIONAL PLUMBING AND MECHANICAL CODE (IPMC).  
 5. ALL WORK SHALL BE IN ACCORDANCE WITH THE 2018 INTERNATIONAL ROOFING AND FLOORING CODE (IRFC) AND THE 2018 INTERNATIONAL WOOD PRESERVATION CODE (IWPC).  
 6. ALL WORK SHALL BE IN ACCORDANCE WITH THE 2018 INTERNATIONAL ACCESSIBILITY STANDARDS AND GUIDELINES (IAS) AND THE 2018 INTERNATIONAL SIGNAGE CODE (ISC).  
 7. ALL WORK SHALL BE IN ACCORDANCE WITH THE 2018 INTERNATIONAL SOUND AND VIBRATION CODE (ISV) AND THE 2018 INTERNATIONAL TRANSPORTATION CODE (ITC).  
 8. ALL WORK SHALL BE IN ACCORDANCE WITH THE 2018 INTERNATIONAL SAFETY CODE (ISC) AND THE 2018 INTERNATIONAL SECURITY CODE (ISecC).  
 9. ALL WORK SHALL BE IN ACCORDANCE WITH THE 2018 INTERNATIONAL CONSTRUCTION CODE (ICC) AND THE 2018 INTERNATIONAL CONSTRUCTION CODE (ICC).  
 10. ALL WORK SHALL BE IN ACCORDANCE WITH THE 2018 INTERNATIONAL CONSTRUCTION CODE (ICC) AND THE 2018 INTERNATIONAL CONSTRUCTION CODE (ICC).



**REFLECTED CEILING PLAN LEGEND**

[Symbol]	GYPSUM CEILING
[Symbol]	2X2 ACT
[Symbol]	FLUSH CEILING MOUNTED LIGHT FIXTURE
[Symbol]	CEILING MOUNTED POINT LIGHT FIXTURE
[Symbol]	WALL MOUNTED POINT LIGHT FIXTURE
[Symbol]	EMERGENCY LIGHT FIXTURE
[Symbol]	FLUSH MOUNTED LIGHT FIXTURE
[Symbol]	EMERGENCY LIGHT FIXTURE
[Symbol]	CEILING MOUNTED DUCTLESS SPLIT SYSTEM AIR DISTRIBUTION DEVICE
[Symbol]	CEILING MOUNTED EXHAUST FAN
[Symbol]	WALL MOUNTED DUCTLESS SPLIT SYSTEM AIR DISTRIBUTION DEVICE



WESTERN CAROLINA UNIVERSITY  
**MOORE HALL GROUND FLOOR RENOVATION**  
 CULLOWHEE, NC

SHEET	ISSUE	NO.	DATE	DESCRIPTION	BY
1	03/07/18	ISSUE FOR BID			AR

PRINCIPAL IN CHARGE: RB  
 PROJECT ARCHITECT: LR  
 DRAWN BY: AR  
 SHEET TITLE: **BASEMENT RENOVATION RCP**

SHEET NO: **A200**  
 PROJ. NO: 017384  
 AGENCY REVIEW ID: 17-1742-01A

Order Plans @ [www.alwaysordering.com](http://www.alwaysordering.com)

