

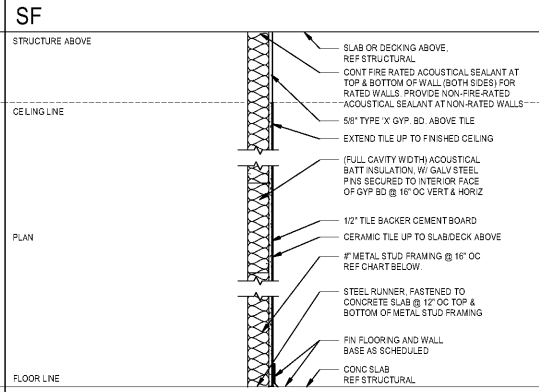
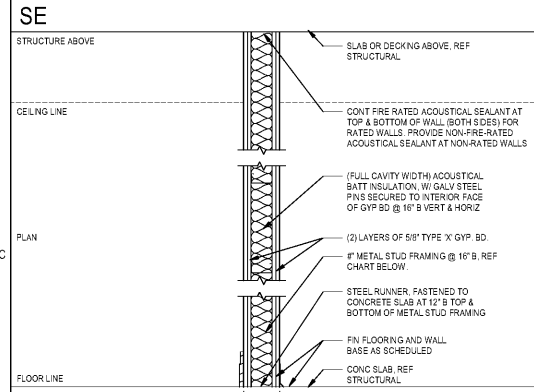
GENERAL PARTITION NOTES

1. PLAN DIMENSIONS ARE FACE OF STUD, CMU OR FINISH FACE OF EXISTING WALL. CONSTRUCTION UNLESS SPECIFICALLY NOTED OTHERWISE.
2. GYPSUM WALL BOARD LAYERS ON RATED WALLS SHALL BE CONTINUOUS THROUGH ALL INTERSECTIONS WITH NON-RATED WALLS. REFER TO FIRE WALL PRIORITY DIAGRAM.
3. REFERENCE ALL FLOOR PLANS AND LIFE SAFETY PLANS FOR RATED WALL LOCATIONS AND RATINGS.
4. PROVIDE TYPE X MOLD AND MOISTURE RESISTANT GYPSUM BOARD IN ALL TOILET AND JANITOR ROOMS.
5. PROVIDE CEMENT BOARD IN ALL WET SHOWER AREA WALLS WITH TILE FINISH.
6. PROVIDE IMPACT RESISTANT GYPSUM BOARD UP TO 4'-0" IN ALL LOBBIES, CORRIDORS, & STARWELLS.
7. AT ALL UL RATED WALLS THAT EXTEND TO THE STRUCTURE ABOVE, FILL VOIDS SOLID WITH MINERAL WOOL INSULATION WHERE WALL IS FRAMED AROUND SEAMS, BAR JOISTS, SLABS, AND ROOF DECK. MAINTAIN SCHEDULED SOUND RATING. AT ALL SOUND RATED WALLS PROVIDE FLEXIBLE SEALANT OR AN ACOUSTICAL CASKET BETWEEN THE STC RATED SYSTEM AND ALL SIMILAR SURFACES (IE PENETRATIONS) AND ALSO BETWEEN THE SYSTEM AND SIMILAR SURFACES WHERE PERIMETER RELIEF IS REQUIRED. ALL OPENINGS THROUGH THE SYSTEM AND ITS ENTIRE PERIMETER SHALL BE SEALED AIRTIGHT TAPING GYPSUM BOARD WALL AND WALL-CEILING INTERSECTIONS PROVIDES AN ADEQUATE AIR SEAL AT THESE LOCATIONS.
8. AT ALL JOINTS AT TOP OF ALL FIRE RATED PARTITIONS PROVIDE COMPLETED FIRE RESISTIVE JOINT SYSTEM TO MATCH FIRE RESISTANCE OF THE ASSEMBLY AND THAT IS ALSO COMPATIBLE WITH JOINT SUBSTRATE. SUBMIT COMPLETE JOINT SYSTEM PRODUCT INFORMATION FOR ALL CONTROL JOINTS.
9. PROVIDE DEFLECTION TRUCK AT TOP OF WALL AT ALL CONNECTIONS TO THE STRUCTURE ABOVE.
10. ANY PORTION OF GYPSUM BOARD THAT BECOMES WET OR SHOWS SIGNS OF MOISTURE DAMAGE, EITHER BEFORE OR AFTER INSTALLATION, IS TO BE REMOVED IMMEDIATELY AND REPLACED WITH NEW GYPSUM BOARD.
11. MANY INTERIOR PARTITIONS HAVE FINISHES, SUCH AS WALL PAPER, WOOD PANELING, SEE FINISH SCHEDULE AND METAL SHEETS FOR ADDITIONAL INFORMATION.
12. GENERAL CONTRACTOR SHALL VERIFY SPACING AND GAUGE OF INTERIOR STUDS. LIMITING HEIGHTS SHALL ALLOW REFLECTION FOR SPECIFIC APPLICATIONS BASED ON MANUFACTURER'S REQUIREMENTS. AT A MINIMUM STUDS SHALL BE 20 GAUGES & 16\"/>

STUD SIZE	3 5/8"	-	-	-	-	-	-	-	-	-
ACTUAL DIMENSION 'X'	4 7/8"	-	-	-	-	-	-	-	-	-
FIRE RATING	1-HR (UL #1448)	-	-	-	-	-	-	-	-	-
ACOUSTICAL RATING (W/ BATTS)	50 STC (SA-870117)	-	-	-	-	-	-	-	-	-

STUD SIZE	3 5/8"	-	-	-	-	-	-	-	-	-
ACTUAL DIMENSION 'X'	5"	-	-	-	-	-	-	-	-	-
FIRE RATING	-	-	-	-	-	-	-	-	-	-
ACOUSTICAL RATING (W/ BATTS)	-	-	-	-	-	-	-	-	-	-

STUD SIZE	1 5/8"	3 5/8"	-	-	-	-	-	-	-	-
ACTUAL DIMENSION 'X'	2 1/4"	4 1/4"	-	-	-	-	-	-	-	-
FIRE RATING	-	-	-	-	-	-	-	-	-	-
ACOUSTICAL RATING (W/ BATTS)	-	-	-	-	-	-	-	-	-	-



STUD SIZE	3 5/8"	-	-	-	-	-	-	-	-	-
ACTUAL DIMENSION 'X'	6 1/8"	-	-	-	-	-	-	-	-	-
FIRE RATING	2-HR (UL #1419)	-	-	-	-	-	-	-	-	-
ACOUSTICAL RATING (W/ BATTS)	58 STC (USG-840818)	-	-	-	-	-	-	-	-	-

STUD SIZE	3 5/8"	-	-	-	-	-	-	-	-	-
ACTUAL DIMENSION 'X'	4 3/8"	-	-	-	-	-	-	-	-	-
FIRE RATING	-	-	-	-	-	-	-	-	-	-
ACOUSTICAL RATING (W/ BATTS)	-	-	-	-	-	-	-	-	-	-

CONTROL JOINT NOTES

CMU:

1. LOCATE CMU CONTROL JOINTS AS FOLLOWS:
 - A. ON ONE SIDE OF ALL WALL OPENINGS SMALLER THAN 6'-0" IN WIDTH (1'-4" FROM ROUGH OPENING)
 - B. ON BOTH SIDES OF ALL WALL OPENINGS LARGER THAN 6'-0" IN WIDTH (1'-4" FROM ROUGH OPENING)
 - C. SO THAT NO SINGLE LENGTH IS GREATER THAN 30'-0"
 - D. NO CLOSER THAN 4'-0" AND NO FARTHER THAN 10'-0" FROM CORNERS.
 - E. WHEREVER ABRUPT CHANGES IN WALL HEIGHTS OR THICKNESS OCCUR.
 - F. ADDITIONAL LOCATIONS WHERE ADVISED BY MASONRY CONTRACTOR.
2. MASONRY CONTRACTOR TO VERIFY LOCATION OF ALL CONTROL JOINTS WITH ARCHITECT PRIOR TO START OF CONSTRUCTION.

GYPSUM BOARD:

1. PROVIDE CONTROL JOINTS IN WIDTHS NO GREATER THAN 20'-0" BUT NO LESS THAN 16'-0". INSTALL CONTROL JOINTS ACCORDING TO ASTM C 840 AND IN SPECIFIC LOCATIONS APPROVED BY ARCHITECT FOR VISUAL EFFECT. SUBMIT CONTROL JOINT LOCATION PLAN TO ARCHITECT FOR REVIEW PRIOR TO INSTALLATION.

WALL TAG LEGEND

WALL VARIANT - ALPHABETICALLY SEQUENTIAL

WALL TYPE
 M - MASONRY
 S - STEEL STUD
 W - WOOD STUD
 C - CHASE WALL
 E - SHARP WALL

MEMBER THICKNESS

FURNISHING	STEEL STUD	WOOD STUD	SHARP WALL	MASONRY
L - LAMINATED	1 - 1 5/8" STUD	1 - 1 1/2" WALLER	4 - 2 1/2" CH STUD	6 - 8" CMU
C - 7/8" HAT	2 - 2 1/2" STUD	3 - 2 x 4" STUD	4 - 4" CH STUD	6 - 8" CMU
1 - 1 1/2" HAT	3 - 3 5/8" STUD	6 - 2 x 6" STUD	6 - 8" CH STUD	8 - 8" CMU
	4 - 4" STUD			
	6 - 6" STUD			
	8 - 8" STUD			

WALL FRAMING PRIORITY

PARTITIONS SHALL BE PRIORITIZED BASED ON FIRE AND SMOKE RATING. PARTITIONS SHALL BE CONSTRUCTED SUCH THAT HIGHER PRIORITY IS FRAMED BEFORE LOWER PRIORITY. LOWER PRIORITY PARTITIONS SHALL BE FRAMED TIGHT TO, BUT NOT INTERRUPT HIGHER PRIORITY CONSTRUCTION (SEE THE EXAMPLE BELOW).

2 HOUR FIRE RATED WITH SMOKE BARRIER	PRIORITY 1 (HIGHEST)
2 HOUR FIRE RATED	PRIORITY 2
1 HOUR FIRE RATED WITH SMOKE BARRIER	PRIORITY 3
1 HOUR FIRE RATED	PRIORITY 4
NONE RATED	PRIORITY 5 (LOWEST)

WESTERN CAROLINA UNIVERSITY

MOORE HALL GROUND FLOOR RENOVATION

CULLOWHEE, NC

ARCHITECT: **mcMillan Smith ARCHITECTURE**

PROJECT ARCHITECT: **LR**

PRINCIPAL IN CHARGE: **RS**

DRAWN BY: **AR**

SHEET TITLE: **PARTITION TYPES - METAL STUD**

SHEET NO: **A003**

PROJ. NO: **017384**

AGENCY REVIEW ID: **17-1742-G1A**

DATE: **03/07/18**

ISSUE FOR BID

Order Plans @

WWW.LDIL.COM