

LIGHT FIXTURE SCHEDULE

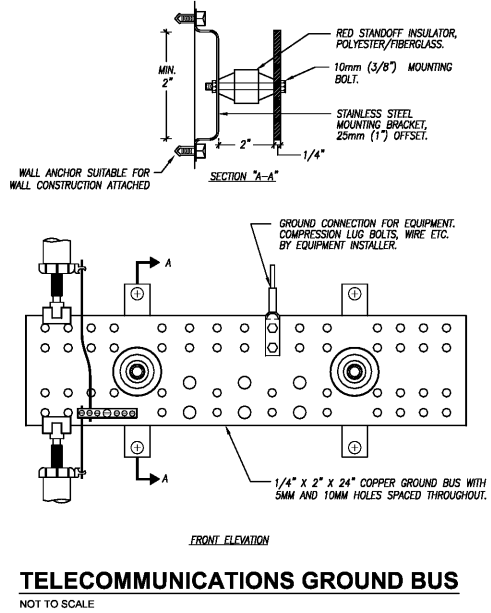
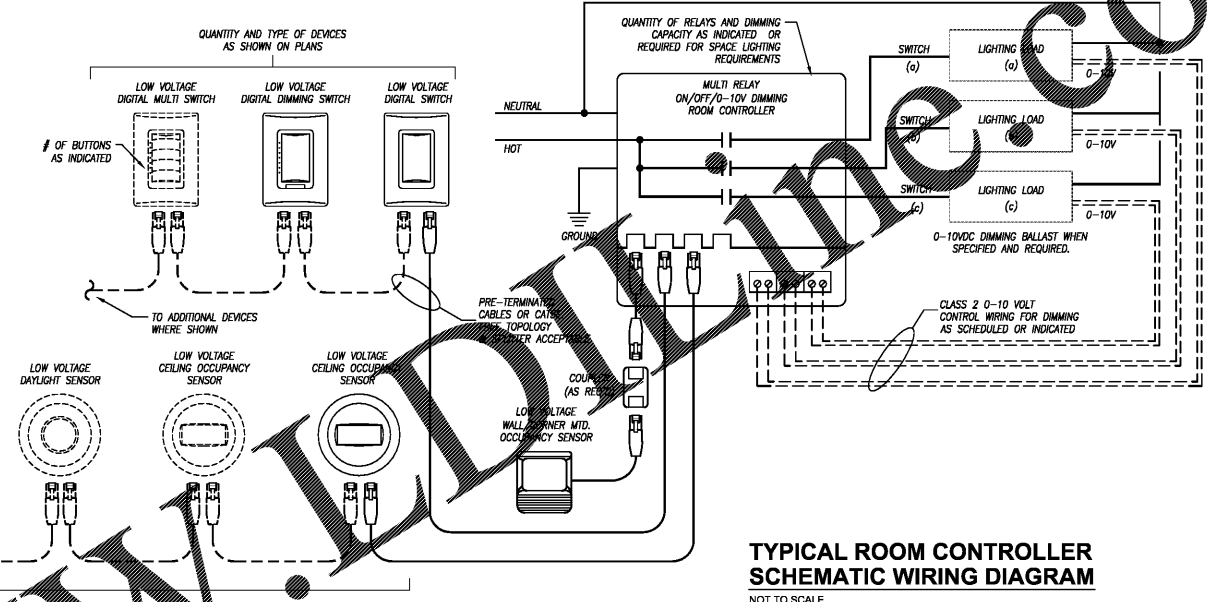
FIXTURE TYPE	MANUFACTURER	CATALOG NUMBER	DESCRIPTION	LAMP NUMBER / DESCRIPTION	VOLTAGE	REMARKS
BT-X	FLUXWERX	PROFILE AREA	3.25" WIDE LINEAR PENDANT-MOUNTED FIXTURE. "X" INDICATES NOMINAL LENGTH IN FEET. COORDINATE EXACT LENGTH WITH ARCHITECT. EXTRUDED ALUMINUM CONSTRUCTION WITH FLAT END CAPS. OPEN CHANNEL DESIGN WITH CLEAR ACRYLIC LENS, 100X DOWN DISTRIBUTION. AIRCRAFT CABLE SUSPENSION - COORDINATE EXACT LENGTH WITH ARCHITECT. INTEGRAL 0-10V DIMMING LED DRIVER. BLACK POWDERCOAT FINISH.	ONE (1) 38 WATT / 4 FT. 3250 LUMENS / 4 FT. LINEAR LED MODULE. 3000K CCT.	120	1,2,3
C1	OCL	GLOWSTICK	SURFACE-MOUNT COORD-HUNG MINI-PENDANT FIXTURE. 1.5" DIAMETER x 14" HIGH. BLACK PAINT FINISH. CLEAR ACRYLIC ROD DIFFUSER. 0-10V DIMMING.	ONE (1) 11 WATT, 735 LUMEN, LED MODULE. 3000K CCT.	120	1,3
C2	CONTECH	CY3	CEILING MOUNT CYLINDER DOWNLIGHT FIXTURE. 3-1/2" DIAMETER x 6" HIGH. MATTE BLACK FINISH. MEDIUM DISTRIBUTION. 0-10V DIMMING. MOUNT TO SHALLOW J-BOX TO MINIMIZE HEIGHT.	ONE (1) 20 WATT, 1800 LUMEN, LED MODULE. 3000K CCT.	120	1,2,3
D1	FOCAL POINT	ID+ 3.5" TRIMLESS	3.5" ROUND RECESSED DOWNLIGHT. DIE-FORMED HOUSING, DIE-CAST ALUMINUM HEAT SINK. TRIMLESS FOR MUD-IN DRYWALL INSTALLATION. CLEAR DIFFUSE REFLECTOR WITH 40° FLOOD BEAM ANGLE/DISTRIBUTION. 0-10V DIMMING.	ONE (1) 19 WATT, 1300 LUMEN, LUMEN PACKAGE. 3000K CCT.	120	1,2
D2	FOCAL POINT	ID+ 3.5" ADJ. TRIMLESS	3.5" ROUND RECESSED DOWNLIGHT. ADJUSTABLE 35° TILT AND 362° ROTATION OF LIGHT MODULE. DIE-FORMED HOUSING, DIE-CAST ALUMINUM HEAT SINK. TRIMLESS FOR MUD-IN DRYWALL INSTALLATION. CLEAR DIFFUSE REFLECTOR WITH 40° FLOOD BEAM ANGLE/DISTRIBUTION. 0-10V DIMMING.	ONE (1) 19 WATT, 1300 LUMEN, LUMEN PACKAGE. 3000K CCT.	120	1
D3	FOCAL POINT	ID+ 3.5"	3.5" ROUND RECESSED DOWNLIGHT. DIE-FORMED HOUSING, DIE-CAST ALUMINUM HEAT SINK. WHITE PAINTED FLANGE. CLEAR DIFFUSE REFLECTOR WITH 40° FLOOD BEAM ANGLE/DISTRIBUTION. 0-10V DIMMING. UL LISTED WET LOCATION.	ONE (1) 19 WATT, 1300 LUMEN, LUMEN PACKAGE. 3000K CCT.	120	1
EM1	DUAL-LITE	EV SERIES	LOW-PROFILE EMERGENCY LIGHTING UNIT. FLAME-RATED, UV-STABLE THERMOPLASTIC HOUSING. TWO (2) SEMI-RECESSED, ADJUSTABLE "EYEBALL" HEADS WITH GLASS LENS. WHITE FINISH. MAINTENANCE-FREE BATTERY FOR 90 MINUTE OPERATION OF LAMPS. INTEGRAL TEST SWITCH AND AC-ON INDICATOR.	TWO (2) 1.1 WATT 1W LED.	120	1
F3	ACCLAIM LIGHTING	FLEX II INTERIOR	16.4" LED TAPE LIGHT SPOOL. FURNISH WITH APPROPRIATELY SIZED 0-10V DIMMABLE LED DRIVER/TRANSFORMER - INSTALL IN CONCEALED, ACCESSIBLE LOCATION. MOUNT IN FLEX 45° CHANNEL WITH OPAL LENS. COORDINATE MOUNTING REQUIREMENTS AND LENGTH WITH ARCHITECT. FIELD CUTTABLE IN 1-INCH INCREMENTS.	ONE (1) 5.5 WATT / FT. NOMINAL 566 LUMENS / FT. LED TAPE. 3000K CCT.	120	1
F4	ACCLAIM LIGHTING	FLEX ONE HO INTERIOR	16.4" LED TAPE LIGHT SPOOL. FURNISH WITH APPROPRIATELY SIZED LINE VOLTAGE DIMMABLE LED DRIVER/TRANSFORMER - INSTALL IN CONCEALED, ACCESSIBLE LOCATION. MOUNT IN TALL PROFILE FLEX CHANNEL WITH OPAL LENS. COORDINATE MOUNTING REQUIREMENTS AND LENGTH WITH ARCHITECT. FIELD CUTTABLE IN 4-INCH INCREMENTS.	ONE (1) 3 WATT / FT. NOMINAL 303 LUMENS / FT. LED TAPE. 3000K CCT.	120	1
G1	SCHOOLHOUSE ELECTRIC	SIMONE SINGLE	5" WIDE x 14" HIGH ADA-COMPLIANT WALL SCONCE. TRUE BLACK FINISH. DAMP LOCATION LISTED.	ONE (1) 43 WATT A19 HALOGEN.	120	1,3,4
N1	WILLIAMS	SERIES 75	4'-0" LONG STRIP FIXTURE WITH SQUARE LENS. SURFACE MOUNT. ALL PARTS PAINTED WHITE AFTER FABRICATION. INTEGRAL LED DRIVER PRE-WIRED FOR NON-DIMMING APPLICATIONS.	ONE (1) 44 WATT, 5500 LUMEN, L50 LED MODULE. 3000K CCT.	120	1
N2	WILLIAMS	SERIES 75	2'-0" LONG STRIP FIXTURE WITH SQUARE LENS. SURFACE MOUNT. ALL PARTS PAINTED WHITE AFTER FABRICATION. INTEGRAL LED DRIVER PRE-WIRED FOR NON-DIMMING APPLICATIONS.	ONE (1) 20 WATT, 1900 LUMEN, L20 LED MODULE. 3000K CCT.	120	1
W	HUBBELL	VAPORITE VTC SERIES	ROUGH LOCATION FIXTURE. FULLY ENCLOSED AND GASKETED. VBL115 CAST ALUMINUM BODY. VLS16 TEMPERED, FROSTED GLASS GLOBE. FURNISH IN WALL ARM MOUNT CONFIGURATION (WV-1) WITH OPTIONAL CAST ALUMINUM GUARD (VCG-15). INTEGRAL LED DRIVER. NEMA 3,4 RATING.	ONE (1) 27.4 WATT, 1402 LUMEN, LED MODULE. 5000K CCT.	120	1
X	DUAL-LITE	LE SERIES	RECESSED EDGE-LIT EXIT SIGN. FURNISH WITH ALL NECESSARY ROUGH-IN AND MOUNTING HARDWARE. EXTRUDED ALUMINUM HOUSING WITH SATIN ALUMINUM FINISH. WATER-CLEAR, MOLDED ACRYLIC EXIT PLAQUE. GREEN LETTERS WITH CLEAR BACKGROUND. CEILING OR WALL MOUNTED WITH PRINTED CHEVRON DIRECTIONAL ARROWS AS INDICATED ON PLANS. FURNISH WITH EMERGENCY OPTION FOR MAINTENANCE-FREE NICKEL-CADMIUM BATTERY FOR 2 HOUR OPERATION WITH INTEGRAL TEST SWITCH AND AC-ON LIGHT.	TWELVE (12) HIGH-OUTPUT LEDS - TOTAL POWER CONSUMPTION = 4.7 WATTS.	120	1

REMARKS:

- FURNISH WITH AND INSTALL ALL NECESSARY HARDWARE AND MOUNTING BRACKETS.
- WHERE FIXTURE IS LABELED "EM", PROVIDE WITH IOTA ILC-CP10 (10W CONSTANT POWER EMERGENCY BATTERY PACK) OR APPROVED EQUAL.
- FIXTURE HAS BEEN SELECTED BY OWNER. IN GENERAL, NO SUBSTITUTIONS WILL BE ALLOWED - COORDINATE SAME WITH OWNER.
- COORDINATE ANY DECORATIVE BULB SELECTIONS WITH ARCHITECT.

GENERAL NOTES (APPLICABLE TO ALL FIXTURES):

- REFER TO SPECIFICATIONS FOR ADDITIONAL FIXTURE/DRIVER/BALLAST REQUIREMENTS.
- ALL BALLASTS FOR FLUORESCENT FIXTURES SHALL COMPLY WITH NEC 410.130(C) REQUIREMENTS FOR DISCONNECTING MEANS AND BE ELECTRONIC PROGRAMMED START.
- LUMENS LISTED FOR LED FIXTURES ARE GENERALLY DELIVERED LUMENS UNLESS NOTED OTHERWISE.
- ALL FIXTURES SHALL BE IC RATED OR PROVIDED WITH INSULATION SHIELDS WHEN INSTALLED IN INSULATED AREAS OF THE TRUSS SPACE.
- FOR ALL FIXTURES INSTALLED IN RATED ASSEMBLIES, FURNISH AND INSTALL APPROVED FIRE BARRIER (E.Z. BARRIER OR TENMAT FT108 SERIES) OVER FIXTURE TO MAINTAIN 1 HOUR CEILING ASSEMBLY RATING.



KEM STUDIO
1515 GENESSEE ST SUITE 11 KANSAS CITY MO 64102
916 756 1808 f 816 756 1828
kemstudio.com

ELEC
S & S ENGINEERING, INC.
10551 Berkley, Suite 601
Overland Park, Kansas 66212
Ph: 913-754-3673
F: 913-754-3674
E-mail: corporate@ss-engr.com
Web: www.ss-engr.com

MECH

PORT KC OFFICES
1000 BERKLEY PARKWAY - SPACE E177
KANSAS CITY, MO 64108
PROJECT NUMBER: A1718

SEAL

Signature
Professional Engineer
1-12-18

ISSUED FOR:
95% CDS
Permit Set

DATE:
12.22.2017
01.12.2018

ELECTRICAL SCHEDULE & DETAILS
E401