

SINGLE-SECTION PANELBOARD SCHEDULE										
PANEL DESIGNATION: P1					MAIN LUG AMPS: 400 MAIN BREAKER: 400 VOLTAGE: 208/120 PHASE/WIRE: 3Ø, 4W					
MOUNTING: SURFACE LOCATION: STORAGE/MECHANICAL 117					CIRCUIT #					
DESCRIPTION	PHASE			TRIP	POLE	CIRCUIT #			DESCRIPTION	
	A	B	C			POLE	TRIP	A		B
ROOFTOP UNIT RTU-1	11803			150	J	1 2	1 20	200		WH BOXES
REC. ROOF	180			20		3 4	1 15	528		EXHAUST FAN EF-1
SPARE				20		5 6	1 --			SPACE
SPARE				20		7 8	1 --			FAN POWER BOX FPB-1
WATER HEATER WH-1	1950			25	2	9 10	3 20	2842	2842	FAN POWER BOX FPB-2
REC. MECH/STOR, CP-1		390		20		11 12	3 30	2842	2842	
FIRE ALARM EXTENDERS	500			20		13 14	3 20	1843	1843	FAN POWER BOX FPB-3
FIRE/SMOKE DAMPERS	250			20		15 16	3 20	1843	1843	
REC. TELECOM		540		20		17 18	3 20	2842	1843	
REC. IT EQUIPMENT	380			20		19 20	3 30	2842	2842	FAN POWER BOX FPB-4
REC. IT EQUIPMENT		180		20		21 22	3 30	2842	2842	
REC. IT EQUIPMENT		180		20		23 24	3 30	1344	1344	FAN POWER BOX FPB-5
SPARE				20		25 26	3 15	1344	1344	
SPARE				20		27 28	3 15	1008	1344	
SPARE				20		29 30	3 15	1008	1008	FAN POWER BOX FPB-6
SPARE				20		31 32	3 15	1008	1008	
SPACE				20		33 34	3 15	828	828	CEILING FAN CF-1
SPACE				20		35 36	3 15	828	828	
SPACE				20		37 38	3 15	828	828	CEILING FAN CF-2
SPACE				20		39 40	3 15	828	828	
SPACE				20		41 42	3 15	828	828	
SPACE				20		43 44	3 15	828	828	
SPACE				20		45 46	3 15	828	828	
SPACE				20		47 48	3 15	828	828	
SPACE				20		49 50	3 15	828	828	
SPACE				20		51 52	3 15	828	828	
SPACE				20		53 54	3 15	828	828	
SPACE				20		55 56	3 15	828	828	
SPACE				20		57 58	3 15	828	828	
SPACE				20		59 60	3 15	828	828	
TOTALS	14793	14183	12883			13578	13906	13378	TOTALS	

PANELBOARD SIZING LOAD			
LOAD DESCRIPTION	CONNECTED	DEMAND	CODE MIN. (VA)
LIGHTS	3,998	1.25	4,998
RECEPTACLES	20,620	100VA + 50% REST	13,460
MOTORS	5,466	1.25 x LARGEST + SUM OF REST	6,117
AIR CONDITIONING	35,408	1.00	35,408
SPACE HEATING	35,185	0.00	0
CONTINUOUS	3,900	1.25	4,875
NON-CONTINUOUS	6,450	1.00	6,450
KITCHEN EQUIPMENT	0	1.00	0
SIZING LOAD			73,308
SIZING LOAD (AMPS)			203

CONNECTED PHASE LOADS		
PHASE	VA	AMPS
A	28,370	238.2
B	28,088	233.9
C	26,260	218.7
TOTALS	82,718	229.8

REMARKS:  
1. CUTLER HAMMER POW-R-LINE 3A OR EQUAL.  
2. FURNISH WITH FEED-THRU LUGS.

EQUIPMENT FAULT CURRENT RATING SCHEDULE			
EQUIPMENT	SCA **	SCCR	NOTES
PANELBOARD P1	11,192	22,000	1
PANELBOARD P2	11,192	22,000	-

NOTES:  
1. RATING BASED ON A KNOWN FAULT AT EXISTING SWITCHBOARD OF 60,950A.  
\*\* CALCULATIONS PERFORMED USING BUSSMANN POINT-TO-POINT METHOD.

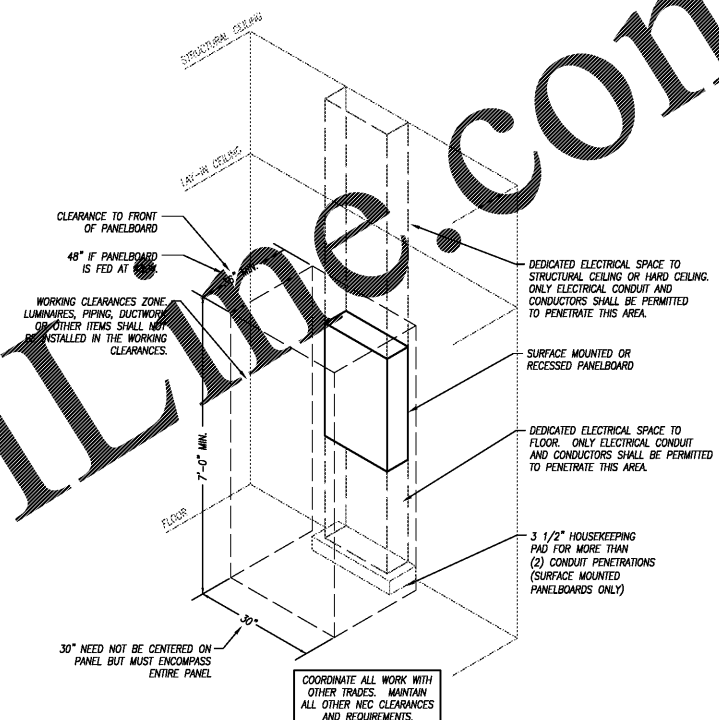
EQUIPMENT FEEDER SCHEDULE						
FEEDER NO.	EQUIPMENT	LOAD (AMPS)	SETS	# OF WIRES	FEEDER SIZE (GROUND)	CONDUIT SIZE
F1	PANELBOARD P1	204.5	2	4	5/8"	#3 COPPER
F2	PANELBOARD P2	70.6	2	4	5/8"	#3 COPPER

SINGLE-SECTION PANELBOARD SCHEDULE										
PANEL DESIGNATION: P2					MAIN LUG AMPS: N/A MAIN BREAKER: M.L.O. VOLTAGE: 208/120 PHASE/WIRE: 3Ø, 4W					
MOUNTING: SURFACE LOCATION: STORAGE/MECHANICAL 117					CIRCUIT #					
DESCRIPTION	PHASE			TRIP	POLE	CIRCUIT #			DESCRIPTION	
	A	B	C			POLE	TRIP	A		B
LTS. STORAGE, RESTROOMS	504			20	1 1 2	2 30	2500			WALL OVEN
LTS. OFFICES		558		20	1 3 4		2500			COFFEE MAKER
LTS. OPEN OFFICE			1007	20	1 5 6	1 20		1000		SPACE
LTS. PRINT, MEZZ	871			20	1 7 8	1 --				COFFEE GRINDER
LTS. BKRM SEATING		330		20	1 9 10	1 --		1000		DISPOSAL
LTS. CONFERENCE, RECEPTION			551	20	1 11 12	1 20		1000		DISHWASHER
LTS. MEZZANINE	177			20	1 13 14	1 20	1000			MICROWAVE
SPARE				20	1 15 16	1 20		1200		REC. COUNTER
SPARE				20	1 17 18	1 20		360		REFRIGERATOR
SPARE				20	1 19 20	1 20		500		REC. PRINT
SPARE				20	1 21 22	1 20		180		COPIER
REC. CONFERENCE 101	540			20	1 23 24	1 20		1000		WATER COOLER
REC. RECEPTION DESK	540			20	1 25 26	1 20	500			REC. FLT. HALL
REC. RECEPTION 102, COFFEE		360		20	1 27 28	1 20		720		REC. MATERNITY, OFFICE 204
REC. CONFERENCE 103	540			20	1 29 30	1 20		900		REC. CONFERENCE 204
REC. BKRM SEATING 104		360		20	1 31 32	1 20	720			REC. CONF. 110
SPARE				20	1 33 34	1 20		720		REC. CONF. 111
SPARE				20	1 35 36	1 20		900		REC. CONF. 112
SPARE				20	1 37 38	1 20	900			REC. CONF. 113
SPARE				20	1 39 40	1 20	900			REC. OFFICE 111
SPARE				20	1 41 42	1 20	900			REC. OFFICE 112
SPACE				20	1 43 44	1 20	900			REC. OFFICE 113
SPACE				20	1 45 46	1 20	360			REC. OFFICE 114
SPACE				20	1 47 48	1 20	360			REC. OFFICE 115
SPACE				20	1 49 50	1 20	360			REC. OPEN OFFICE
SPACE				20	1 51 52	1 20	360			REC. OPEN OFFICE
SPACE				20	1 53 54	1 20	540			REC. OPEN OFFICE
SPACE				20	1 55 56	1 20				REC. OPEN OFFICE
SPACE				20	1 57 58	1 20				SPARE
SPACE				20	1 59 60	1 20				SPARE
SPACE				20	1 61 62	1 20				SPARE
TOTALS	2632	1788	1918			7338	7940	6960	TOTALS	

PANELBOARD SIZING LOAD			
LOAD DESCRIPTION	CONNECTED	DEMAND	CODE MIN. (VA)
LIGHTS	3,998	1.25	4,998
RECEPTACLES	19,120	100VA + 50% REST	14,340
MOTORS	0	1.25 x LARGEST + SUM OF REST	0
AIR CONDITIONING	0	1.00	0
SPACE HEATING	0	0.00	0
CONTINUOUS	0	1.25	0
NON-CONTINUOUS	0	1.00	5,500
KITCHEN EQUIPMENT	0	1.00	0
SIZING LOAD			25,098
SIZING LOAD (AMPS)			70

REMARKS:  
1. CUTLER HAMMER POW-R-LINE 1A OR EQUAL.  
2. SUBFED FROM PANELBOARD P1.

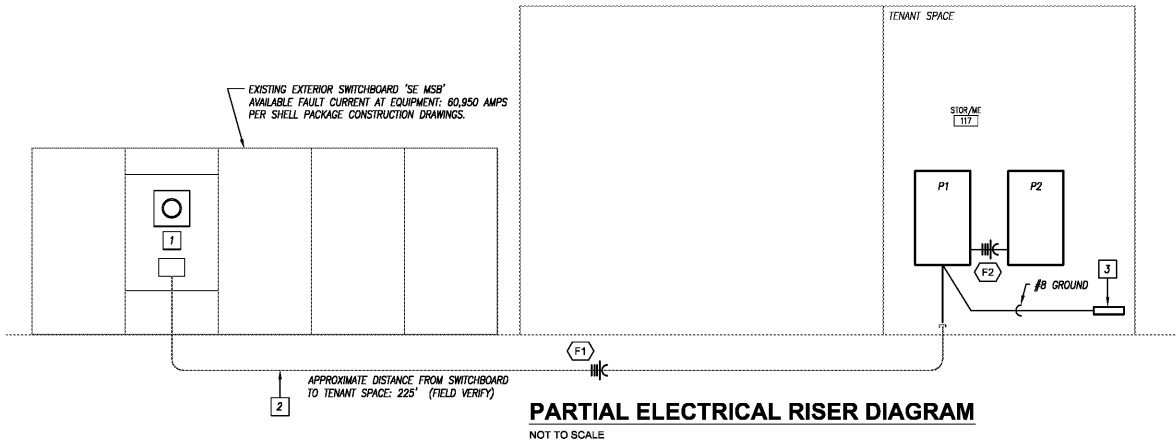
CONNECTED PHASE LOADS		
PHASE	VA	AMPS
A	10,012	83.4
B	9,728	81.0
C	8,678	73.9
TOTALS	28,618	79.4



**TYPICAL PANELBOARD INSTALLATION DETAIL**  
NOT TO SCALE

**RISER DIAGRAM KEYED NOTES**

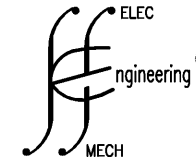
- EXISTING DISTRIBUTION SECTION IN SWITCHBOARD FOR TENANT WITH 400A MAIN CIRCUIT BREAKER AND METER SOCKET.
- EXISTING (2) 3" CONDUITS WITH PULL STRING FROM SWITCHBOARD STUBBED UP INTO TENANT SPACE. PULL NEW FEEDER THROUGH EXISTING CONDUIT AND MAKE FINAL CONNECTIONS. COORDINATE CTS WORK WITH UTILITY.
- TELECOMMUNICATIONS GROUND BUS NEAR POST RACK. COORDINATE LOCATION/REQUIREMENTS WITH IT CONSULTANT. RE: DETAIL SHEET E401.



**PARTIAL ELECTRICAL RISER DIAGRAM**  
NOT TO SCALE

**KEMSTUDIO**  
1515 GENESSEE ST SUITE 11 KANSAS CITY MO 64102  
816 756 1808 f 816 756 1828

kemstudio.com



**S & S ENGINEERING, INC.**  
10551 Barkley, Suite 601  
Overland Park, Kansas 66212  
Ph: 913-754-3673  
F: 913-754-3674  
E-mail: corporate@ss-engr.com  
Web: www.ss-engr.com

**PORT KC OFFICES**

1000 BERKLEY PARKWAY - SPACE E177  
KANSAS CITY, MO 64108  
PROJECT NUMBER: A1718



ISSUED FOR:	DATE:
95% CDS	12.22.2017
Permit Set	01.12.2018

**ELECTRICAL PANELBOARD SCHEDULES**

**E301**