

**GENERAL POWER NOTES**

1. REFER TO GENERAL NOTES ON MEP COVER SHEET FOR ADDITIONAL REQUIREMENTS OF WORK.
2. COORDINATE EXACT NEMA CONFIGURATIONS OF RECEPTACLES SERVING EQUIPMENT WITH EXACT EQUIPMENT TO BE FURNISHED.
3. REFER TO THE SPECIFICATIONS FOR ADDITIONAL REQUIREMENTS FOR RECEPTACLES, INCLUDING GFCI, WEATHER-RESISTANT, HOSPITAL-GRADE, AND TAMPER-RESISTANT RECEPTACLES.
4. EXACT MECHANICAL EQUIPMENT LOCATIONS SHOULD NOT BE SHOWN FOR CLARITY. COORDINATE EXACT LOCATIONS OF MECHANICAL EQUIPMENT, DUCT DETECTORS, ETC. WITH MECHANICAL DRAWINGS AND CONTRACTOR.
5. COORDINATE EXACT LOCATIONS OF SMOKE DETECTORS WITH CEILING FANS, HVAC FILTERS, SPRINKLER HEADS, ETC. PER NFPA REQUIREMENTS.

**POWER PLAN KEYED NOTES**

- 1 MOUNT DEVICES IN HOISTWAY ABOVE PATH OF ELEVATOR TRAVEL.
- 2 JUNCTION BOX IN FLOOR OF CONTAINER. REFER TO SPECIFICATION BELOW.
- 3 2" CONDUIT WITH PULL STRING TO BEHIND TELEVISION.
- 4 WIRE TO FIRE/SMOKE DAMPERS(S). REFER TO MECHANICAL PLANS FOR LOCATIONS AND NUMBERS OF FIRE/SMOKE DAMPERS.

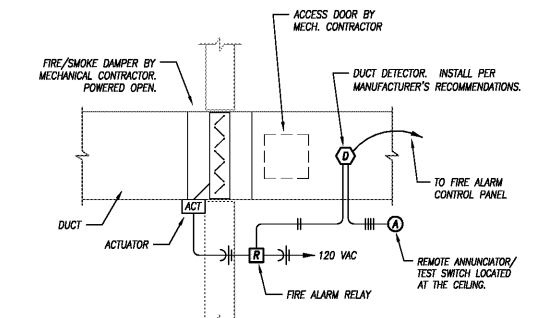
**FLOOR BOX**

**POWER/DATA FLOOR BOX:**  
 FLOOR BOX: HUBBELL #B24R2 2-GANG STAMPED STEEL FLOOR BOX OR APPROVED EQUAL. THREADED SIDE AND BOTTOM CONDUIT ACCESS FOR WIRING. FURNISH WITH ALL REQUIRED MOUNTING ACCESSORIES NOT LISTED.

**COVER (POWER):** HUBBELL #SA3825 SINGLE SERVICE COVER OR EQUAL. ONE (1) DUPLEX OPENING FOR RECEPTACLE. FURNISH RECEPTACLE FOR SAME. ALUMINUM FINISH.

**COVER (DATA):** HUBBELL #SA3826 STYLE LINE DECORATOR COVER OR EQUAL. COORDINATE DEVICE CONFIGURATION WITH A/V CONSULTANT. ALUMINUM FINISH.

**FLANGE:** HUBBELL #SA3084W 2-GANG FLANGE OR APPROVED EQUAL. ALUMINUM FINISH. COORDINATE EXACT FINISH WITH ARCHITECT AND OWNER.



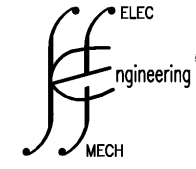
**MEZZANINE FLOOR PLAN - POWER**  
 3/16" = 1'-0"

**FIRE/SMOKE DAMPER WIRING DIAGRAM**  
 NOT TO SCALE

**KEM STUDIO**

1515 GENESEE ST SUITE 11 KANSAS CITY MO 64102  
 816 256 1808 f 816 756 1828

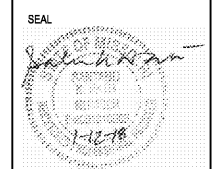
kemstudio.com



**S & S ENGINEERING, INC.**  
 10551 Berkley, Suite 601  
 Overland Park, Kansas 66212  
 Ph: 913-754-3673  
 Fx: 913-754-3674  
 E-mail: corporate@ss-engr.com  
 Web: www.ss-engr.com

**PORT KC OFFICES**

1000 BERKLEY PARKWAY - SPACE E177  
 KANSAS CITY, MO 64108  
 PROJECT NUMBER: A1718



ISSUED FOR:	DATE:
95% CDS	12.22.2017
Permit Set	01.12.2018

**POWER PLAN**

**E202**