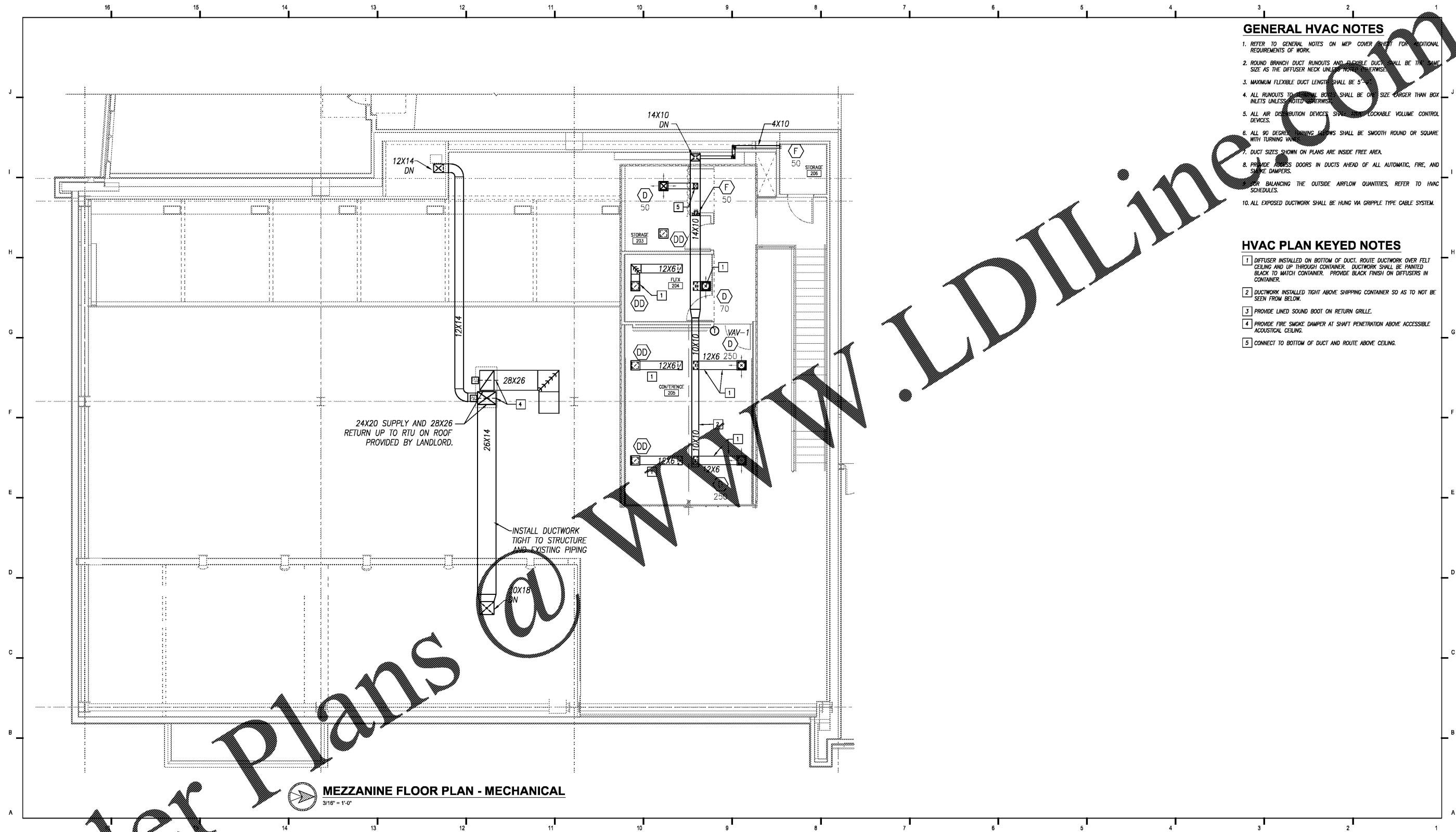


GENERAL HVAC NOTES

1. REFER TO GENERAL NOTES ON MEP COVER SHEET FOR ADDITIONAL REQUIREMENTS OF WORK.
2. ROUND BRANCH DUCT RUNOUTS AND FLEXIBLE DUCT SHALL BE THE SAME SIZE AS THE DIFFUSER NECK UNLESS NOTED OTHERWISE.
3. MAXIMUM FLEXIBLE DUCT LENGTH SHALL BE 5'-0".
4. ALL RUNOUTS TO CEILING BOXES SHALL BE ONE SIZE LARGER THAN BOX INLETS UNLESS NOTED OTHERWISE.
5. ALL AIR DISTRIBUTION DEVICES SHALL BE LOCKABLE VOLUME CONTROL DEVICES.
6. ALL 90 DEGREE TURNING FITTINGS SHALL BE SMOOTH ROUND OR SQUARE WITH TURNING VANES.
7. DUCT SIZES SHOWN ON PLANS ARE INSIDE FREE AREA.
8. PROVIDE ACCESS DOORS IN DUCTS AHEAD OF ALL AUTOMATIC, FIRE, AND SMOKE DAMPERS.
9. FOR BALANCING THE OUTSIDE AIRFLOW QUANTITIES, REFER TO HVAC SCHEDULES.
10. ALL EXPOSED DUCTWORK SHALL BE HUNG VIA GRIPPLE TYPE CABLE SYSTEM.

HVAC PLAN KEYED NOTES

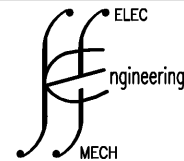
1. DIFFUSER INSTALLED ON BOTTOM OF DUCT. ROUTE DUCTWORK OVER FELT CEILING AND UP THROUGH CONTAINER. DUCTWORK SHALL BE PAINTED BLACK TO MATCH CONTAINER. PROVIDE BLACK FINISH ON DIFFUSERS IN CONTAINER.
2. DUCTWORK INSTALLED TIGHT ABOVE SHIPPING CONTAINER SO AS TO NOT BE SEEN FROM BELOW.
3. PROVIDE LINED SOUND BOOT ON RETURN GRILLE.
4. PROVIDE FIRE SMOKE DAMPER AT SHAFT PENETRATION ABOVE ACCESSIBLE ACOUSTICAL CEILING.
5. CONNECT TO BOTTOM OF DUCT AND ROUTE ABOVE CEILING.



MEZZANINE FLOOR PLAN - MECHANICAL
3/16" = 1'-0"

KEMSTUDIO
1515 GENESSEE ST SUITE 11 KANSAS CITY MO 64102
816 756 1808 f 816 756 1828

kemstudio.com



S & S ENGINEERING, INC.
10551 Berkley, Suite 601
Overland Park, Kansas 66212
Ph: 913-754-3673
Fx: 913-754-3674
E-mail: corporate@ss-engr.com
Web: www.ss-engr.com

PORT KC OFFICES

1000 BERKLEY PARKWAY - SPACE E177
KANSAS CITY, MO 64108
PROJECT NUMBER: A1718



| | |
|-------------|------------|
| ISSUED FOR: | DATE: |
| 95% CDS | 12.22.2017 |
| Permit Set | 01.12.2018 |
| | |
| | |
| | |

MECHANICAL PLAN

M102