

16 15 14 13 12 11 10 9 8 7 6 5 4 3 2 1

J I H G F E D C B A

- A. DURING BIDDING / PRICING PHASE, GC SHALL DETERMINE AVAILABILITY OF ALL MATERIALS. ANY DELIVERY SCHEDULE THAT MAY CAUSE COORDINATION PROBLEMS SHALL BE REVIEWED BY ARCHITECT PRIOR TO ORDER AND INSTALLATION.
- B. ALL RECEPTACLES AND COVER PLATES SHALL BE DECORA WHITE AT GYPSUM BOARD WALLS SCHEDULED TO BE PAINTED (PA-1). UNLESS NOTED OTHERWISE, PROVIDE COLOR SAMPLES FOR ALL RECEPTACLES AND COVER PLATES IN LOCATIONS WHERE PAINT COLOR OTHER THAN WHITE OCCURS.
- C. PROVIDE 4" x 4" PAINT SWATCH OF EACH COLOR SCHEDULED FOR REVIEW BY OWNER AND ARCHITECT.
- D. PROVIDE 4" x 4" STAIN SWATCH OF EACH COLOR SCHEDULED FOR REVIEW BY OWNER AND ARCHITECT.
- E. ALL GYPSUM BOARD WALLS SCHEDULED TO BE PAINTED IN RESTROOMS OR OTHER WET LOCATIONS SHALL USE EPOXY TYPE PAINT.
- F. AT TILE LOCATIONS PROVIDE 1/8" GROUT LINES MAXIMUM, UNLESS NOTED OTHERWISE.
- G. PROVIDE 1/2" CEMENT BOARD IN LIEU OF GYPSUM BOARD WHERE WALL TILE IS SPECIFIED, UNLESS NOTED OTHERWISE.
- H. PATCH, PAINT AND REPAIR ALL DAMAGED EXISTING WALLS, FLOORS, AND CEILINGS TO ACHIEVE ARCHITECTURAL DETAILS. REFER TO ROOM FINISH SCHEDULE FOR ALL NEW FINISHES.
- I. VERIFY ALL DIMENSIONS INDICATED AS "FIELD VERIFY" OR "FV" ON THE DRAWINGS PRIOR TO CONSTRUCTION. REPORT ANY ISSUES TO ARCHITECT.
- J. CONFIRM FINAL LOCATION OF RECESSED FLOOR OUTLETS WITH ARCHITECT IN FIELD PRIOR TO INSTALLATION.
- K. REFERENCE FINISH SCHEDULE 7A/A604 FOR ALL FLOOR, CEILING & WALL FINISHES.
- L. DIMENSIONS ARE TO FINISH FACE OF WALLS, COLUMN GRIDS AND OUTSIDE FACE OF STOREFRONT FRAMING DIMENSIONS ARE TO FINISH FACE OF WALLS, COLUMN GRIDS AND OUTSIDE FACE OF STOREFRONT FRAMING.
- M. DIMENSIONS ARE TO FINISH FACE OF WALLS, COLUMN GRIDS AND OUTSIDE FACE OF STOREFRONT FRAMING.
- N. ALL DOOR TRANSITIONS & THRESHOLDS PER SPECIFICATIONS.
- O. EXTEND ALL FINISHES (INCLUDING PAINT) BENEATH, BEHIND AND ALL AROUND FURNITURE, CASEWORK, EQUIPMENT, SIGNAGE, ETC. WHETHER INDICATED OR NOT.
- P. ALL BASEBOARD CORNERS SHALL BE MITER CUT AND ALL RUNS SHALL BE KERF CUT, PATCH, SAND AND PAINT ALL FASTENER HOLES IN BASEBOARDS.
- Q. ALL CASEWORK TO RECEIVE FRAMELESS CONCEALED HINGES AND TAB PULLS PER SCHEDULE U.N.O. RE 1A/A604
- R. PAINT HOLLOW METAL DOORS AND FRAMES TO MATCH ADJACENT WALLS (SEMI-GLOSS), UNLESS NOTED OTHERWISE.

FINISH SCHEDULE GENERAL NOTES **7H**

- A. ALL APPLIANCES ARE PROVIDED AND INSTALLED BY GC.
- B. REFERENCE A400 SERIES FOR APPLIANCE LOCATIONS.
- C. REFERENCE MEP DRAWINGS FOR SPECIFIC MEP REQUIREMENTS.
- D. VERIFY ALL FINAL INSTALLATION LOCATIONS ACCOMMODATE REQUIRED CLEARANCES.
- E. PROVIDE ADA COMPLIANT FFE ITEMS AS REQUIRED BY CODE.

APPLIANCE GENERAL NOTES **7G**

TAG	MFR	MODEL #	DESCRIPTION	COMMENTS
E0	BUNN	MHG	MULTI-HOPPER PORTION COFFEE	BLACK
E1	BUNN	CW15-APS	COFFEE BREWER - POUR OVER AIR	COLOR - ALL BLACK
E2	BUNN	AIRPOT-3.8L	COFFEE CARAFE - 3.8L - AIRPOT	
E3	PASQUINI	BEZ-BB4	ESPRESSO GRINDER	
E4	PASQUINI	HMLG44	ESPRESSO MACHINE - SINGLE HEAD - 8 LUMEN	
E5	ESPRESSO PARTS	BARISTA BASICS 6X6	KNOCK BOX - 6X6 COUNTER	COLOR - ALL BLACK
E6	Kenmore	70343	Kenmore 70343 1.2 cu.ft. French Door Refrigerator - Stainless Steel	COLOR - ALL WHITE
E7	LG	LMC1275SB	LG CHEF COLLECTION TOP MICROWAVE	
E8	BOSCH	SGX68U5SUC	PREPARED TO CONFIRM, CLEARANCES AND INSTALLATION REQUIREMENTS WITH OWNER'S MANUAL	ADA COMPLIANT
E10	INSIGNIA	NS-B08AS7	BEVERAGE COOLER - GLASS FRONT	
E12	BOSCH	HB121TUC	OVEN TOUNDER CABINET & UNDERCOUNTER	
E15			EXISTING PRINTING BY OWNER	
E16	SAMSUNG		LOW PROFILE WALL MOUNT (4K)	
E29	KEURIG	T20143	PLUMBING COMMERCIAL BREWING SYSTEM	

APPLIANCE / EQUIPMENT SCHEDULE **7E**

ROOM NAME	#	FLOOR FINISH	WALL FINISH			BASE CONDITION	CEILING FINISH	COMMENTS	
			E WALL	N WALL	S WALL				
CONFERENCE	101	CPT-1	EXISTING	PA-1	EXISTING	GL-2	WB-3	PA-1	MANUAL ROLLER SHADES AT EXISTING
RECEPTION	102	CPT-1	EXISTING	PA-1 / FAB-1 / CNT-1	PA-1	GL-2	WB-3	PA-1	MANUAL ROLLER SHADES AT EXISTING
CONFERENCE	103	CPT-1	EXISTING	PA-1 / PA-2	CAB-1	GL-2	WB-3	PA-1	MANUAL ROLLER SHADES AT EXISTING
CORROR	105	CONC-1	GL-2	N/A	EXISTING	GL-1 / PA-1	WB-3	EXISTING	
OFFICE	106	CPT-1	N/A	CAB-1	N/A	N/A	WB-3	AP-2	
LUNGE	107	CPT-1	EXISTING	WG-1	PA-1 / PA-2 DOORS	N/A	WB-3	EXISTING	
MEAROOM	108	CONC-1	N/A	N/A	CAB-1 / CNT-2	N/A	AP-3		
PRINT	109	CONC-1	PA-1 / WP-1 / CAB-1	PA-1	PA-1	WB-3	AP-3 / PA-1		
CEO OFFICE	110	CPT-1	GL-1	PA-1	EXISTING / PA-1	WD-1	WB-3	PA-1	MANUAL ROLLER SHADES AT EXISTING
OFFICE	111	CPT-1	GL-1	PA-1	PA-1	WD-1	WB-3	PA-1	
OFFICE	112	CPT-1	GL-1	PA-1	PA-1	WD-1	WB-3	PA-1	
OFFICE	113	CPT-1	GL-1	PA-1	PA-1	WD-1	WB-3	PA-1	
OFFICE	114	CPT-1	GL-1	PA-1	PA-1	WD-1	WB-3	PA-1	
OFFICE	115	CPT-1	GL-1	PA-1	PA-1	WD-1	WB-3	PA-1	
HALL	116	CONC-1	PA-1	PA-1	PA-1	WB-1	WB-3	PA-1	
STORAGE / MECHANICAL	117	CONC-1	PA-1	PA-1	PA-1	WB-1	WB-3	PA-1	
RESTROOM	118	CONC-1	PA-1	PA-1	PA-1	WB-1	WB-3	PA-1	
RESTROOM	119	CONC-1	PA-1	PA-1	PA-1	WB-2	WB-3	PA-1	
RESTROOM / SHOWER	120	CONC-1 / CT-1	PA-1	PA-1	PA-1	WB-2	WB-3	PA-1	EPOXY PAINT AT SHOWER CLG
FLEX	121	CONC-1	PA-1	PA-1	PA-1	WB-1	GWB - PA-1		
STORAGE	122	CONC-1	PA-1	PA-1	PA-1	WB-3	GWB - PA-1		
STAIR	123	MTL-4	EXISTING	WG-1	N/A	PA-1	N/A	EXISTING	
STORAGE	203	CPT-2	PA-1	PA-1	PA-1	WB-1	WB-1	PA-1	
FLEX	204	CPT-2	PA-1	PA-1	PA-1	WB-3	WB-3	PA-1	
CONFERENCE	205	CPT-2	GL-3 / PA-2	AP-1 / PA-2	AP-1 / PA-2 / PA-1	WB-3	AP-1 / PA-2	PA-2	PA-2 AT GWB DOOR HEAD
STORAGE	206	CPT-1	PA-1	PA-1	PA-1	WB-1	EXISTING		

ROOM FINISH SCHEDULE **7A**

FINISH LEGEND

CONC-1	POLISHED CONCRETE - SLAB BY LANDLORD - FINISH BY OWNER
CPT-1	CARPET TILE - TANDUS CENTIVA, GEOKNIT 10687, DATA CLOUD 42702
CPT-2	CARPET TILE - INTERFACE, MONOCHROME, BLUE 101841
MTL-1	POWDER COATED STEEL - 'WHITE' (RECEPTION DESK / RECEPTION STATION) - ORIGINAL - WHITE GLOSS - T002-WH08
MTL-2	POWDER COATED STEEL - 'BLACK' (CONFERENCE TABLE TRAY INSERTS) - CABINETS - ORIGINAL - WHITE GLOSS - T001-BK120
MTL-3	GALVANIZED STEEL STAIR STRUCTURE
MTL-4	STEEL STAIR TREADS & LANDING - STEEL PLATE GRATING - RE. STRUCTURAL
MTL-5	EXISTING STEEL STRUCTURE - FLOOR PA-4

WALL/CEILING FINISH

AP-1	ARTISTIC WALLCOVERING PANELS - FELT, ARO PLANK, PLANK 2.2 (REPEAT AA'), COLOR - 686 ENZIAN
AP-2	ACOUSTIC CEILING PANEL - HUNTER DOUGLAS, HEARTFELT - GREY, DARK GREY 7596F - SUSPENSION SYSTEM - BLACK
AP-3	ACOUSTIC CEILING PANEL - HUNTER DOUGLAS, HEARTFELT - GREY, ANTHRACITE 7599F - SUSPENSION SYSTEM - BLACK
CT-1	WALL AND FLOOR TILE IN SHOWER - PORCELANOSA - GLAZE HEXAGON WHITES MATT - L244006811-100169236
WB-1.1	WALL AND FLOOR TILE GROUT IN SHOWER - PORCELANOSA - COLORSTUK 0-4 - BLANCO
WB-1	FABRIC UPHOLSTERED PANELS / CUSHIONS - MAHARAM - MODE 466337 - ANGELFISH 032
PA-1	PPG - DELICATE WHITE 518-1 - EGGSHELL (WALLS), FLAT (CEILING), SEMI-GLOSS (BASE BOARDS)
PA-2	PAINT FOR EXTERIOR OF SHIPPING CONTAINER - METAL - PPG - ONYX - PPG1011-7 - MATTE FINISH
PA-3	PAINT FOR EXTERIOR OF SHIPPING CONTAINER - PLYWOOD SOFFIT - PPG - ONYX - PPG1011-7
PA-4	INTUMESCENT COATING - CLEAR - ON EXISTING STEEL. RE. UL DESIGN NO. N007 - 1
PA-5	PAINT FOR ALL EXPOSED ROUND DUCTWORK - PPG - ONYX - PPG1011-7 - MATTE FINISH
PA-6	PAINT FOR EXPOSED DUCT/CONDUIT/PLUMBING AT PRECAST CONCRETE CEILING - PPG - HOT STONE - PPG1007-4
WD-1	WOOD PANELING - ELMWOOD, WHITE OAK TRADITIONAL, CLEAN LINEN, WIDTH - 4", THICKNESS - 3/4", REVEAL BETWEEN PLANKS = 1/4" RE. DETAIL, (LENGTHS - NO CUT PLANKS. ROOM #110 WIDTH = 11'-0" +/-, ROOM #111-115 WIDTH = 9'-10" +/-, V.I.F.)
WG-1	CUSTOM WALL GRAPHIC - COMMERCIAL VINYL WALLCOVERING - BLACK AND WHITE GRAPHIC
WP-1	WALL PANEL - SLATWALL - STEELCASE SLATWALL - WHITE FINISH

WALL BASE

WB-1	RUBBER WALL BASE - ROPPE - 161 SNOW
WB-2	FLUSH SOLID SURFACE WALL BASE - GLACIER WHITE
WB-3	'MUSEUM BASE' REGLET REVEAL AT FLOOR - PAINTED FINISH - FRY REGLET 'Z' REVEAL 1/2"

COUNTER TOPS

CNT-1	SOLID SURFACE COUNTERTOP - CORIAN - GLACIER WHITE
CNT-2	SOLID SURFACE COUNTERTOP - CORIAN - DEEP NOCTURNE
WD-2	WOOD TOP - ELMWOOD, WHITE OAK TRADITIONAL, CLEAN LINEN, WIDTH - 4", THICKNESS - 1-1/2", LENGTHS - NO CUT PLANKS. LOCATION: RECEPTION DESK

MILLWORK

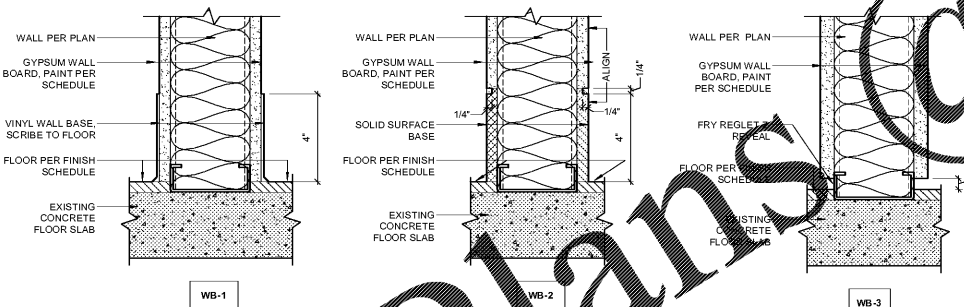
CAB-1	HIGH DENSITY SHOP APPLIED SPRAY FINISH CABINET - WHITE TO MATCH PPG DELICATE WHITE 518-1 PROVIDE HAFELE POLISHED BLACK FINISH 40MM TAB PULL
CAB-2	WHITE OAK VENEERED CABINET, QUARTER SAWN, STAIN AND SEAL PER ARCHITECT. PROVIDE HAFELE POLISHED BLACK FINISH 40MM TAB PULL
LAM-1	LAMINATE - CABINET INTERIORS - WHITE

GLASS

GL-1	CLEAR GLASS - TEMPERED - 1/2" - CLEAR - LOW IRON
GL-2	CLEAR GLASS - TEMPERED - 1/2" - CLEAR - LOW IRON + FROSTED FILM - APPLIED TO HALLWAY SIDE FILM: 3M 7725-31 DUSTED CRYSTAL
GL-3	CLEAR GLASS - TEMPERED - 5/8" - CLEAR - LOW IRON
GL-4	CLEAR GLASS - TEMPERED & LAMINATED - 1/2" - CLEAR - LOW IRON - ROOM 110 'OFFICE' SKYLIGHT

NOTES
A. IN-PLACE PAINT SAMPLES REQUIRED FOR PAINTS APPLIED TO METAL

FINISH LEGEND **1A**



NOTES:
A. SCRIBE ALL WALL BASE TO FLOOR.
B. REFERENCE FINISH SCHEDULE FOR WALL BASE COLORS.

WALL BASE DETAILS **13A**

KEM STUDIO
1515 GENESSEE ST SUITE 11 KANSAS CITY MO 64102
816 756 1808 f 816 756 1828

kemstudio.com

RELATED DOCUMENTS: This Drawing may be part of an integrated set of Construction Documents, including the executed Agreement, the General and Supplemental Conditions of the Contract, Division-01 "General Requirements", and applicable "technical" Specification Sections. The Contract Documents are complementary; what is required by one is as binding as if required by all. Other documents affecting the Work may include Geotechnical recommendations, Manufacturer's Product Data and installation requirements, Shop Drawings and Coordination Drawings. Failure to review applicable documents does not reduce the obligation to provide complete and operation building components.

THE INTENT OF THE CONTRACT DOCUMENTS is to include all items necessary for completion of the construction Work indicated. Except as otherwise indicated, provide (furnish and install) all products, materials, equipment, options, items or accessories necessary for proper operation and use, in accordance with product manufacturer's requirements, and comply with applicable laws, codes and ordinances of Authorities Having Jurisdiction (AHJ).

VERIFY EXISTING CONDITIONS AND DIMENSIONS prior to construction. Calculate and measure dimensions - DO NOT SCALE THE DRAWINGS unless so directed by the Architect. Dimensions indicated are to the face of a material unless otherwise indicated.

Application of a material or equipment item to Work installed by others constitutes acceptance of that Work, and assumption of responsibility for subsequent satisfactory installation.

THIS DRAWING WAS PREPARED under the Architect's supervision, and is an "Instrument of Service" in and of itself for use on this Project. The Architect's Services are performed solely in the interest of the Architect's Client; no obligation is assumed by the Architect for the benefit of any other entity involved in the Construction Work. The information, ideas and designs indicated - including the overall form, arrangement and composition of spaces or building elements - constitutes the original, confidential, and unpublished Work and property of the Architect. Possession of this Drawing confers no right or license to disclose to others the subject matter contained herein for any but authorized purposes. Unauthorized use, reproduction or distribution - in whole or in part - is strictly prohibited. Copyright © 2018 by KEM STUDIO.

PORT KC OFFICES

1000 BERKLEY PARKWAY - SPACE E177
KANSAS CITY, MO 64106

PROJECT NUMBER: A1718

ISSUED FOR:
P.R. #01 - SHELL OPENINGS 01.05.2018
PERMIT 01.12.2018

SCHEDULES & LEGENDS

A604