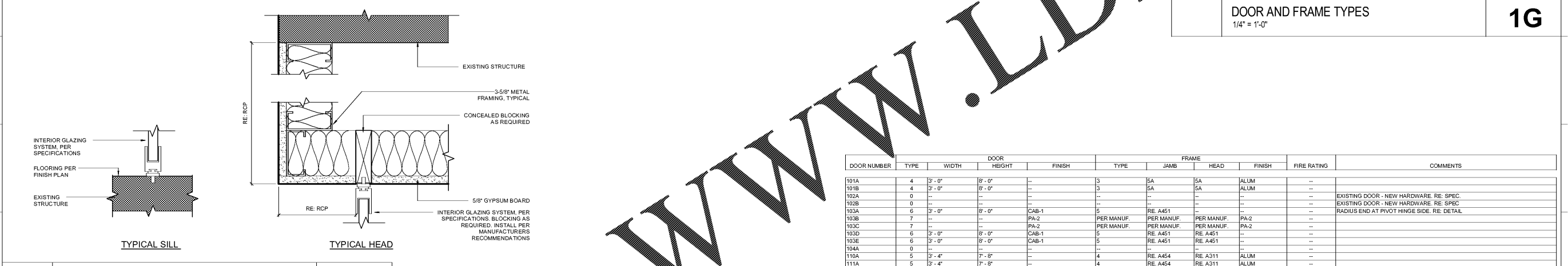
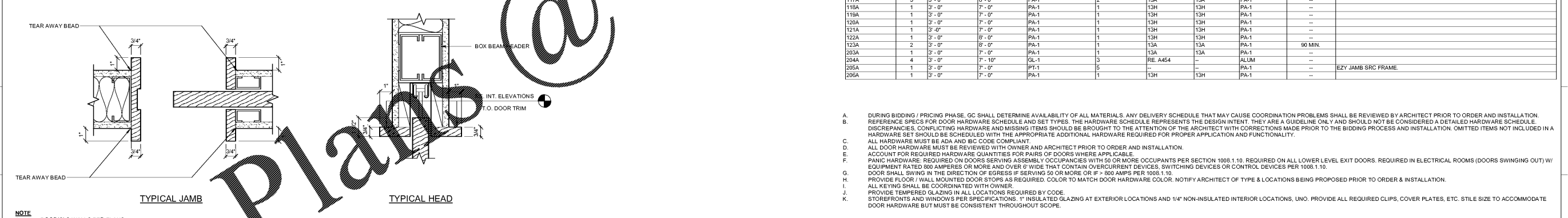


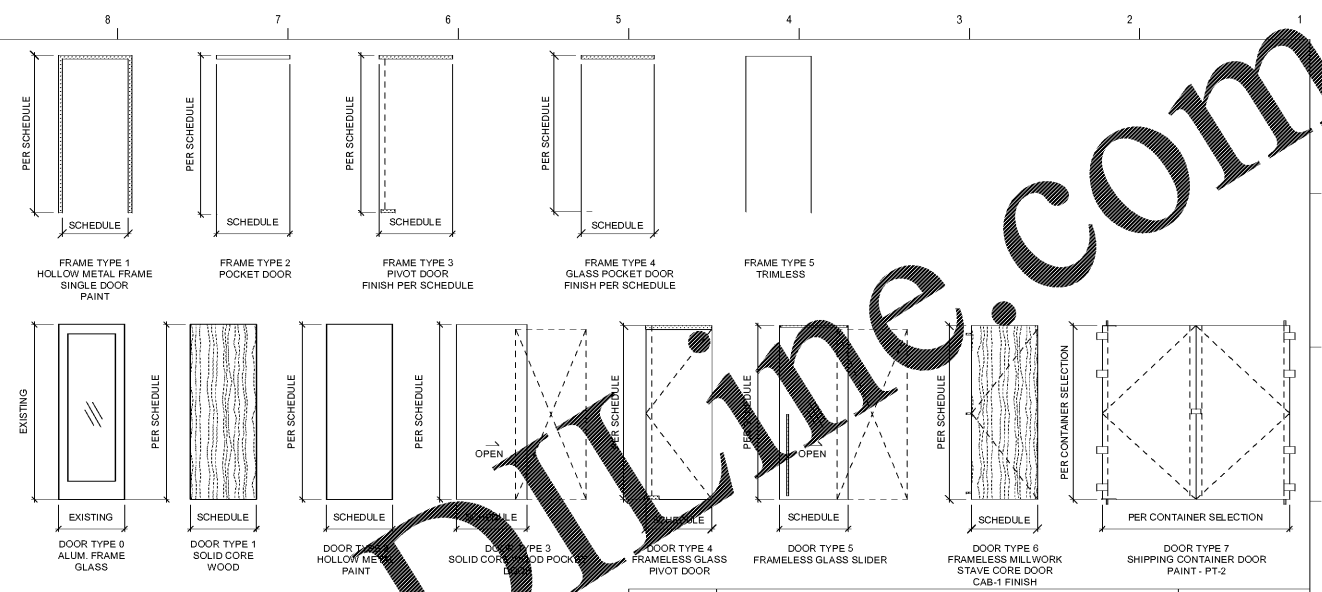
TYPICAL HOLLOW METAL FRAME DETAILS
3" = 1'-0" **13H**



TYPICAL FRAMELESS GLASS DOOR DETAILS
3" = 1'-0" **13D**



TYPICAL POCKET DOOR FRAME DETAILS
3" = 1'-0" **13A**



DOOR AND FRAME TYPES
1/4" = 1'-0" **1G**

DOOR NUMBER	TYPE	DOOR		FINISH	FRAME				FIRE RATING	COMMENTS
		WIDTH	HEIGHT		JAMB	HEAD	FINISH			
101A	4	3'-0"	8'-0"	--	3	5A	5A	ALUM	--	
101B	4	3'-0"	8'-0"	--	3	5A	5A	ALUM	--	
102A	0	--	--	--	--	--	--	--	--	EXISTING DOOR - NEW HARDWARE RE. SPEC.
102B	0	--	--	--	--	--	--	--	--	EXISTING DOOR - NEW HARDWARE RE. SPEC.
103A	6	3'-0"	8'-0"	CAB-1	5	RE. A451	--	--	--	RADIUS END AT PIVOT HINGE SIDE. RE. DETAIL
103B	7	--	--	PA-2	5	PER MANUF.	PER MANUF.	PA-2	--	
103C	7	--	--	PA-2	5	PER MANUF.	PER MANUF.	PA-2	--	
103D	6	3'-0"	8'-0"	CAB-1	5	RE. A451	RE. A451	--	--	
103E	6	3'-0"	8'-0"	CAB-1	5	RE. A451	RE. A451	--	--	
104A	0	--	--	--	--	--	--	--	--	
110A	5	3'-4"	7'-8"	--	4	RE. A454	RE. A311	ALUM	--	
111A	5	3'-4"	7'-8"	--	4	RE. A454	RE. A311	ALUM	--	
112A	5	3'-4"	7'-8"	--	4	RE. A454	RE. A311	ALUM	--	
113A	5	3'-4"	7'-8"	--	4	RE. A454	RE. A311	ALUM	--	
114A	5	3'-4"	7'-8"	--	4	RE. A454	RE. A311	ALUM	--	
115A	5	3'-4"	7'-8"	--	4	RE. A454	RE. A311	ALUM	--	
117A	3	3'-0"	8'-0"	PA-1	2	13A	13A	PA-1	--	
118A	1	3'-0"	7'-0"	PA-1	1	13H	13H	PA-1	--	
119A	1	3'-0"	7'-0"	PA-1	1	13H	13H	PA-1	--	
120A	1	3'-0"	7'-0"	PA-1	1	13H	13H	PA-1	--	
121A	1	3'-0"	7'-0"	PA-1	1	13H	13H	PA-1	--	
122A	1	3'-0"	8'-0"	PA-1	1	13H	13H	PA-1	--	
123A	2	3'-0"	8'-0"	PA-1	1	13A	13A	PA-1	90 MIN.	
203A	1	3'-0"	7'-0"	PA-1	1	13A	13A	PA-1	--	
204A	4	3'-0"	7'-10"	GL-1	3	RE. A454	--	ALUM	--	EZY JAMB SRC FRAME.
205A	1	3'-0"	7'-0"	PT-1	6	--	--	PA-1	--	
206A	1	3'-0"	7'-0"	PA-1	1	13H	13H	PA-1	--	

- A. DURING BIDDING / PRICING PHASE, GC SHALL DETERMINE AVAILABILITY OF ALL MATERIALS. ANY DELIVERY SCHEDULE THAT MAY CAUSE COORDINATION PROBLEMS SHALL BE REVIEWED BY ARCHITECT PRIOR TO ORDER AND INSTALLATION.
- B. REFERENCE SPECS FOR DOOR HARDWARE SCHEDULE AND SET TYPES. THE HARDWARE SCHEDULE REPRESENTS THE DESIGN INTENT. THEY ARE A GUIDELINE ONLY AND SHOULD NOT BE CONSIDERED A DETAILED HARDWARE SCHEDULE. DISCREPANCIES, CONFLICTING HARDWARE AND MISSING ITEMS SHOULD BE BROUGHT TO THE ATTENTION OF THE ARCHITECT WITH CORRECTIONS MADE PRIOR TO THE BIDDING PROCESS AND INSTALLATION. OMITTED ITEMS NOT INCLUDED IN A HARDWARE SET SHOULD BE SCHEDULED WITH THE APPROPRIATE ADDITIONAL HARDWARE REQUIRED FOR PROPER APPLICATION AND FUNCTIONALITY.
- C. ALL HARDWARE MUST BE ADA AND IBC CODE COMPLIANT.
- D. ALL DOOR HARDWARE MUST BE REVIEWED WITH OWNER AND ARCHITECT PRIOR TO ORDER AND INSTALLATION.
- E. ACCOUNT FOR REQUIRED HARDWARE QUANTITIES FOR PAIRS OF DOORS WHERE APPLICABLE.
- F. PANIC HARDWARE, REQUIRED ON DOORS SERVING ASSEMBLY OCCUPANCIES WITH 50 OR MORE OCCUPANTS PER SECTION 1008.1.10. REQUIRED ON ALL LOWER LEVEL EXIT DOORS. REQUIRED IN ELECTRICAL ROOMS (DOORS SWINGING OUT) / EQUIPMENT RATED 800 AMPERES OR MORE AND OVER 6' WIDE THAT CONTAIN OVERCURRENT DEVICES, SWITCHING DEVICES OR CONTROL DEVICES PER 1008.1.10.
- G. DOOR SHALL SWING IN THE DIRECTION OF EGRESS IF SERVING 50 OR MORE OR > 800 AMPERS PER 1008.1.10.
- H. PROVIDE FLOOR / WALL MOUNTED DOOR STOPS AS REQUIRED. COLOR TO MATCH DOOR HARDWARE COLOR. NOTIFY ARCHITECT OF TYPE & LOCATIONS BEING PROPOSED PRIOR TO ORDER & INSTALLATION.
- I. ALL KEYING SHALL BE COORDINATED WITH OWNER.
- J. PROVIDE TEMPERED GLAZING IN ALL LOCATIONS REQUIRED BY CODE.
- K. STOREFRONTS AND WINDOWS PER SPECIFICATIONS. 1" INSULATED GLAZING AT EXTERIOR LOCATIONS AND 1/4" NON-INSULATED INTERIOR LOCATIONS. UNO. PROVIDE ALL REQUIRED CLIPS, COVER PLATES, ETC. STYLE SIZE TO ACCOMMODATE DOOR HARDWARE BUT MUST BE CONSISTENT THROUGHOUT SCOPE.

DOOR SCHEDULE **1A**

KEM STUDIO
1515 GENESSEE ST SUITE 11 KANSAS CITY MO 64102
816 756 1808 f 816 756 1828
kemstudio.com

RELATED DOCUMENTS: This Drawing may be part of an integrated set of Construction Documents, including the executed Agreement, the General and Supplemental Conditions of the Contract, Division-01 "General Requirements", and applicable "Technical Specification Sections". The Contract Documents are complementary; what is required by one is as binding as if required by all. Other documents affecting the Work may include Geotechnical recommendations, Manufacturer's Product Data and installation requirements, Shop Drawings and Coordination Drawings. Failure to review applicable documents does not reduce the obligation to provide complete and operation-ready building components.

THE INTENT OF THE CONTRACT DOCUMENTS is to include all items necessary for completion of the construction Work indicated. Except as otherwise indicated, provide (furnish and install) all products, materials, equipment, options, items or accessories necessary for proper operation and use, in accordance with product manufacturer's requirements, and comply with applicable laws, codes and ordinances of Authorities Having Jurisdiction (AHJ).

VERIFY EXISTING CONDITIONS AND DIMENSIONS prior to construction. Calculate and measure dimensions - DO NOT SCALE THE DRAWINGS unless as directed by the Architect. Dimensions indicated are to the face of a material unless otherwise indicated. Application of a material or equipment item to Work installed by others constitutes acceptance of that Work, and assumption of responsibility for subsequent satisfactory installation.

THIS DRAWING WAS PREPARED under the Architect's supervision, and is an "Instrument of Service" intended solely for use on this Project. The Architect's Services are performed solely in the interest of the Architect's Client; no obligation is assumed by the Architect for the benefit of any other entity involved in the Construction Work. The information, ideas and designs indicated - including the overall form, arrangement and composition of spaces or building elements - constitutes the original, confidential, and unpublished Work and property of the Architect. Possession of this Drawing confers no right or license to disclose to others the subject matter contained herein for any but authorized purposes. Unauthorized use, reproduction or distribution - in whole or in part - is strictly prohibited. Copyright © 2018 by KEM STUDIO.

PORT KC OFFICES
1000 BERKLEY PARKWAY - SPACE E177
KANSAS CITY, MO 64106
PROJECT NUMBER: A1718

SEAL
STATE OF MISSOURI
MATTHEW B. MURPHY
NUMBER
A-2017022298
11/12/18
ARCHITECT

ISSUED FOR:
P.R. #01 - SHELL OPENINGS 01.05.2018
PERMIT 01.12.2018

DOOR SCHEDULE, FRAME & DOOR TYPES AND DETAILS
A603