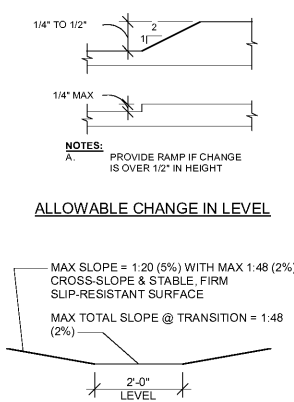


**SIDE REACH**

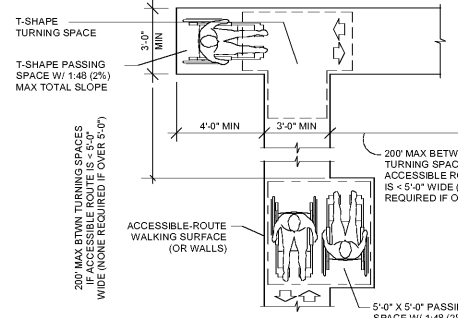
**FORWARD REACH OVER OBSTRUCTION**

**FORWARD REACH**

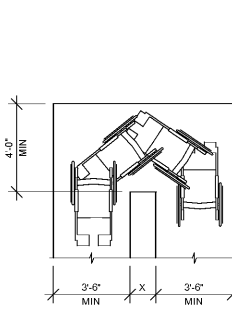


**ALLOWABLE CHANGE IN LEVEL**

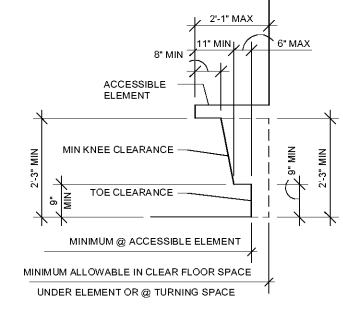
MAX SLOPE = 1:20 (5%) WITH MAX 1:48 (2%)  
 CROSS-SLOPE & STABLE, FIRM SLIP-RESISTANT SURFACE  
 MAX TOTAL SLOPE @ TRANSITION = 1:48 (2%)



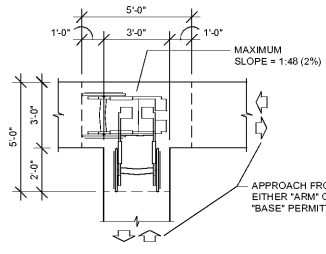
**PASSING SPACES @ ACCESSIBLE ROUTE**



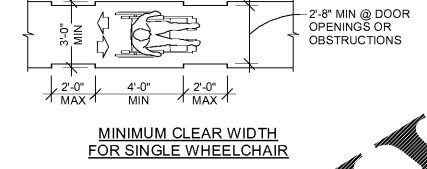
**TURN AROUNDS - OBSTRUCTION**



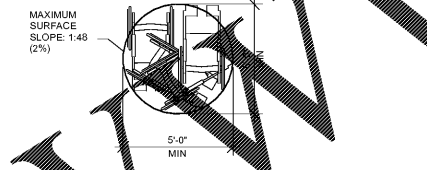
**KNEE AND TOE CLEARANCES**



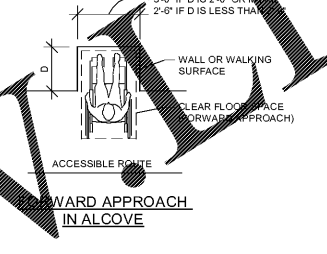
**T-SHAPED TURNING SPACE**



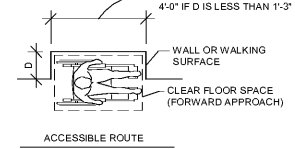
**MINIMUM CLEAR WIDTH FOR SINGLE WHEELCHAIR**



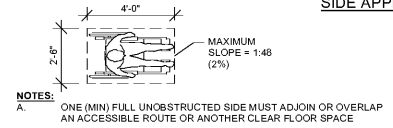
**CIRCULAR TURNING SPACE**



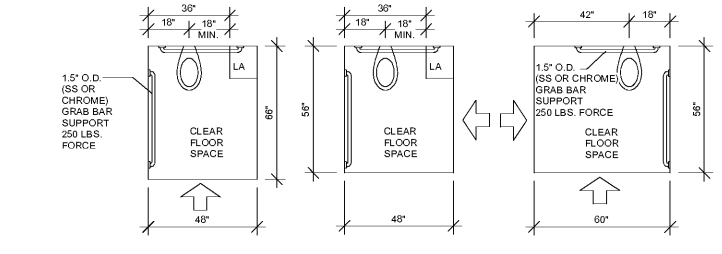
**FORWARD APPROACH IN ALCOVE**



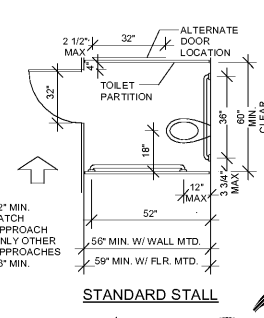
**SIDE APPROACH IN ALCOVE**



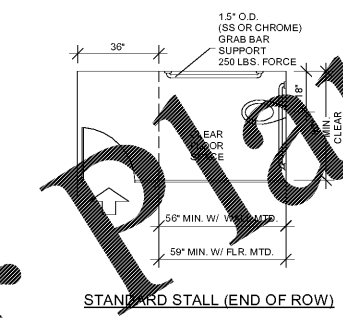
**CLEAR FLOOR SPACE (CFS) REQUIREMENTS**



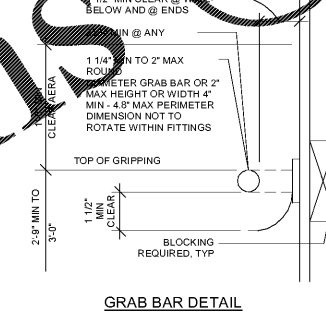
**CLEAR FLOOR SPACE AT WATER CLOSETS**



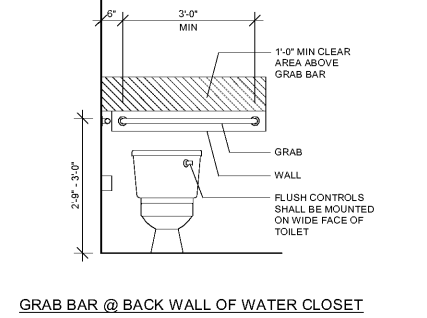
**STANDARD STALL**



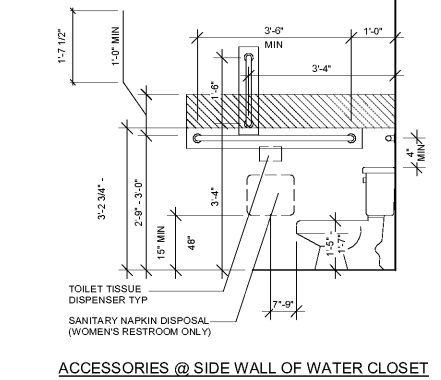
**STANDARD STALL (END OF ROW)**



**GRAB BAR DETAIL**



**GRAB BAR @ BACK WALL OF WATER CLOSET**



**ACCESSORIES @ SIDE WALL OF WATER CLOSET**

**ACCESSIBLE ROUTE WITHIN BUILDING**  
 ACCESSIBLE ROUTES MAY CONSIST OF ONE OR MORE OF THESE COMPONENTS:  
 WALKING SURFACES  
 RAMPS  
 DOORS AND DOORWAYS  
 ELEVATOR AND PLATFORM LIFTS  
 MINIMUM CORRIDOR WIDTH: 3'-8"  
 MINIMUM WIDTH OF ACCESS AISLES: 3'-0"  
 CARPETED WALKING SURFACES: BROADLY CARPETED WITH FIRM FINISH OR PAD (OR WITHOUT CUSHION & PAD) WITH LEVEL TOP, TEXTURED, LEVEL CUT OR LEVEL CUT/UNICUT PILE TEXTURE WITH 1/2 INCH MAX PILE HEIGHT, SECURELY ATTACHED TO SUBSTRATE AND PROVIDE BEVELED EDGE-TRIM ALONG ENTIRE LENGTH OF EXPOSED EDGE PER ABOVE.

**AREA OF RESCUE ASSISTANCE**  
 PROVIDE AN AREA OF RESCUE ASSISTANCE (AREA OF RESCUE ASSISTANCE) FOR EACH ACCESSIBLE EXIT-DISCHARGE DOOR - EXCEPT IN BUILDINGS WITH A SUPPLEMENTAL FIRE SUPPRESSION SYSTEM.  
 MINIMUM SIZE: PROVIDE A MINIMUM OF TWO (2) EACH 2'-0" X 4'-0" AREAS OR ONE (1) EACH PER 200 OCCUPANT RECEPTORY SEEN NOT ENCROACHING ON ANY REQUIRED EXIT WIDTH.

**ROOM OR COMPARTMENTS**  
 UNITS TOILETS: PROVIDE AN ACCESSIBLE FACILITY WITH A SINGLE WATER-CLOSET AND LAVATORY IN AN AMBULATORY OR ASSEMBLY OCCUPANCIES WHERE A TOTAL OF SIX (6) OR MORE MALE AND FEMALE WATER-CLOSETS ARE REQUIRED (PER IBC).  
 PROVIDE ONE (1) SINGLE-USE TOILET ROOMS WITH DOOR LOCKING FROM INSIDE.  
 WATER-CLOSET COMPARTMENTS: PROVIDE A MINIMUM OF ONE (1) WHEELCHAIR-ACCESSIBLE WATER-CLOSET AND LAVATORY AND WHEN OVER SIX (6) WATER-CLOSETS + URINALS ARE PROVIDED IN A TOILET ROOM, PROVIDE ONE (1) TO BE AMBULATORY-ACCESSIBLE IN ADDITION TO THE WHEELCHAIR-ACCESSIBLE UNIT.  
 SINKS: PROVIDE NO LESS THAN ONE (1) ACCESSIBLE SINK (OR 5% OF TOTAL) WHERE PROVIDED (MCP OR SERVICE-SINKS ARE NOT REQUIRED TO BE ACCESSIBLE).  
 DRINKING FOUNTAINS  
 IF ONLY ONE DRINKING FOUNTAIN IS PROVIDED IN A SPACE OR BUILDING, PROVIDE A "DUAL HI-LOW" TYPE UNIT ACCESSIBLE TO BOTH WHEELCHAIR USERS AND TO PERSONS WITH DIFFICULTY BENDING OR STOOPING (STANDARD HEIGHT UNIT) OR OTHER MEANS TO ACHIEVE EQUIVALENT ACCESSIBILITY FOR BOTH (PROVIDING AN ACCESSIBLE WATER COOLER, FOR EXAMPLE).  
 PROVIDE DRINKING FOUNTAINS IN ALCOVE OUT OF COMMON PATH OF TRAVEL.  
 SPACING BETWEEN DRINKING FOUNTAINS: 2'-3" (27") MINIMUM.

**ACCESSIBLE ELEVATORS**  
 MINIMUM CAR SIZE:  
 DEPTH: 4'-3" TO FRONT WALL - 4'-6" TO DOOR  
 WIDTH: 50 OR MORE OCCUPANTS: 5'-8" MIN (STRETCHER TYPE).  
 UNDER 50 OCCUPANTS: 4'-6" MIN.  
 MINIMUM DOOR WIDTH:  
 50 OR MORE OCCUPANTS: 3'-6" MIN.  
 UNDER 50 OCCUPANTS: 2'-10" MIN.  
 HANDRAIL AT REAR: LOCATE BETWEEN 2'-6" TO 2'-10" AFF.  
 ELEVATOR CONTROL:  
 LOCATE BETWEEN 2'-11" MIN AND 4'-6" AFF MAX.  
 PROVIDE EMERGENCY PHONE @ 4'-0" AFF MAX WITH 2'-5" MIN CORD LENGTH.  
 HALL-CALL BUTTONS: CENTER AT 3'-6" AFF.  
 HALL LANTERNS: 6'-0" (72 INCH) AFF - VISUAL AND AUDIBLE.  
 FLOOR INDICATOR SIGNS:  
 2" HIGH CONTRASTING LETTER SIGN WITH BRILLE ON SIDE OF DOOR JAMB AT 60" AFF.

**ACCESSIBLE SEATING**  
 WHEN PROVIDED AT FIXED OR BUILT-IN TABLES, COUNTERS OR WORK SURFACES, PROVIDE 5% MINIMUM BUT NOT LESS THAN ONE (1) ACCESSIBLE SEATING, DISTRIBUTED THROUGHOUT.  
 POINT-OF-SALE (POS) OR SERVICE COUNTERS: PROVIDE NOT LESS THAN ONE (1) UNIT TO BE ACCESSIBLE DISPERSED THROUGHOUT IF COUNTERS ARE DISPERSED.

**SIGNAGE**  
 REQUIRED ACCESSIBLE SIGNS (MINIMUM) EXCEPT AT BUILDING DIRECTORIES, MENU BOARDS OR TEMPORARY SIGNS PROVIDE ACCESSIBLE SIGNS AS FOLLOWS:  
 ACCESSIBLE ENTRANCES: PROVIDE A 4 X 4' ACCESSIBILITY DECAL AT ALL ACCESSIBLE PUBLIC ENTRANCE DOORS CENTERED AT 60" AFF.  
 NON-ACCESSIBLE PUBLIC ENTRANCES: PROVIDE DIRECTIONAL SIGNS INDICATING LOCATION OF NEAREST ACCESSIBLE ENTRANCE.  
 NON-ACCESSIBLE TOILET ROOMS: PROVIDE DIRECTIONAL SIGNS INDICATING LOCATION OF NEAREST ACCESSIBLE UNITS.  
 ROOM (OR SPACE) SIGNS (INCLUDING TOILET ROOMS): PROVIDE RAISED PICTOGRAMS, TACTILE CHARACTERS AND BRILLE TEXT.  
 ACCEPTABLE CHARACTERS: UPPER-CASE, LOWER-CASE OR A COMBINATION OF BOTH IN A SANS-SERIF CONVENTIONAL STYLE - NO ITALIC, OBLIQUE, SCRIPT, HIGHLY DECORATIVE OR OTHER UNUSUAL FORMS.  
 FINISH & CONTRAST: NON-GLARE WITH EITHER LIGHT CHARACTERS ON DARK BACKGROUND OR DARK CHARACTERS ON LIGHT BACKGROUND.  
 ILLUMINATION LEVEL AT ACCESSIBLE SIGNS: MINIMUM 10 FOOT-CANDLES AND NAMES, INDIVIDUAL LETTERS OF THE ALPHABET, INITIALS OR PROVIDE CLEAR FLOOR AREA OF 18 X 18 INCHES CENTERED ON TACTILE CHARACTER SIGNS BEYOND ARC OF DOOR SWING FROM CLOSED TO 45 DEGREE OPEN POSITION.  
 BRILLE: CONTRACTED (GRADE 2) WITH INDICATION OF AN UPPERCASE LETTER ONLY BEFORE THE FIRST WORD OF SENTENCES, PROPER NOUNS AND NAMES, INDIVIDUAL LETTERS OF THE ALPHABET, INITIALS OR ACRONYM.  
 ALARMS  
 IF EMERGENCY WARNING SYSTEMS ARE PROVIDED, PROVIDE BOTH AUDIBLE AND VISUAL ALARMS IN ANY COMMON-USE AREAS, INCLUDING BUT NOT LIMITED TO RESTROOMS, MEETING ROOMS, HALLWAYS AND LOBBIES); PERMANENTLY CONNECT ALARM SYSTEMS TO THE BUILDING ELECTRICAL POWER AND LIGHTING SYSTEM AS APPROPRIATE.  
 IF AUDIBLE ALARMS ARE PROVIDED, THEY MUST PRODUCE SOUND EXCEEDING THE PREVAILING EQUIVALENT SOUND LEVEL OF A SPACE BY AT LEAST 15 DBA OR EXCEED ANY MAXIMUM SOUND LEVEL WITH A DURATION OF 60 SECONDS BY 5 DBA, WHICHEVER IS LOUDER (NOT EXCEEDING 120DBA).  
 IF VISUAL ALARMS ARE PROVIDED, PROVIDE UNFILTERED OR CLEAR-FILTERED WHITE XENON-STROBE TYPE LAMPS OR EQUIVALENT, WITH 0.2 SECOND MAXIMUM PULSE DURATION AND MAXIMUM DUTY CYCLE OF 40 PERCENT, PROVIDING A MINIMUM BRIGHTNESS INTENSITY OF 75 CANDELA WITH A FLASH RATE BETWEEN 1 AND 3 Hz; LOCATE UNITS NO MORE THAN 6'-10" (80") AFF OR 6" BELOW CEILING (WHICHEVER IS LOWER). LOCATE 50 FEET MAXIMUM FROM ANY POINT WITHIN A SPACE OR COMMON CORRIDOR, OR IN LARGE SPACES OVER 100 FEET ACROSS (SUCH AS AUDITORIUMS) WITHOUT OBSTRUCTIONS 6 FEET AFF, LOCATE AROUND ROOM PERIMETER AT MAXIMUM 100 FEET CENTERS.

**KEM STUDIO**  
 1515 GENESEE ST SUITE 11 KANSAS CITY MO 64102  
 816 756 1808 f 816 756 1828  
 kemstudio.com

**RELATED DOCUMENTS:** This Drawing may be part of an integrated set of Construction Documents, including the enclosed Agreement, the General and Supplemental Conditions of the Contract, Division-01 "General Requirements", and applicable "technical" Specification Sections. The Contract Documents are complementary when used as intended by one as binding as required by all. Other documents affecting the Work may include Geotechnical recommendations, Manufacturer's Product Data and installation requirements, Shop Drawings and Coordination Drawings. Failure to review applicable documents does not reduce the obligation to provide complete and operation building components.

**THE INTENT OF THE CONTRACT DOCUMENTS** is to include all items necessary for completion of the construction Work indicated. Except as otherwise indicated, provide (furnish and install) all products, materials, equipment, options, items or accessories necessary for proper operation and use, in accordance with product manufacturer's requirements, and comply with applicable laws, codes and ordinances of Authorities Having Jurisdiction (AHJ).

**VERIFY EXISTING CONDITIONS AND DIMENSIONS** prior to construction. Calculate and measure dimensions - DO NOT SCALE THE DRAWINGS unless as directed by the Architect. Dimensions indicated are to the face of a material unless otherwise indicated. Application of a material or equipment item to Work installed by others constitutes acceptance of that Work, and assumption of responsibility for subsequent satisfactory installation.

**THIS DRAWING WAS PREPARED** under the Architect's supervision, and is an "Instrument of Service" in limited liability for use on this Project. The Architect's Services are performed solely in the interest of the Architect's Client - no obligation is assumed by the Architect for the benefit of any other entity involved in the Construction Work. The information, ideas and designs indicated - including the overall form, arrangement and composition of spaces or building elements - constitutes the original, confidential, and unpublished Work and property of the Architect. Possession of this Drawing confers no right or license to disclose to others the subject matter contained herein for any but authorized purposes. Unauthorized use, reproduction or distribution - in whole or in part - is strictly prohibited. Copyright © 2016 by KEM STUDIO.

**PORT KC OFFICES**  
 1000 BERKLEY PARKWAY - SPACE E177  
 KANSAS CITY, MO 64106  
 PROJECT NUMBER: A1718

SEAL  
 STATE OF MISSOURI  
 MATTHEW B. MURPHY  
 ARCHITECT  
 NUMBER A-2017022298  
 01/12/18

**STANDARD ADA CLEARANCES**  
**A005**

ISSUED FOR:  
 P.R. #01 - SHELL OPENINGS 01.05.2018  
 PERMIT 01.12.2018