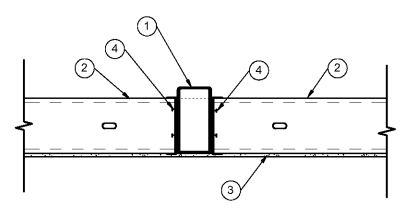


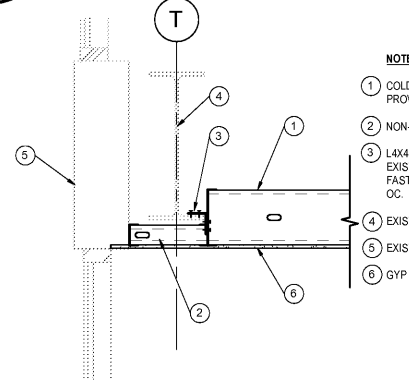
- NOTES:
- 1 HSS BEAM. COPE AS REQD TO WELD TO EXISTING WF BEAM.
 - 2 INFILL WITH NON-STRUCTURAL COLD FORMED FRAMING FOR GYP BD SUPPORT
 - 3 CF JOISTS. RE: PLAN
 - 4 EXISTING WF BEAM.

4 SECT @ CONF ROOM 1
3/4" = 1'-0"



- NOTES:
- 1 HSS BEAM. RE: PLAN
 - 2 COLD FORMED JOISTS. RE: PLAN
 - 3 GYP SHEATHING. RE: ARCH
 - 4 FASTEN TRACK TO HSS W/ PAF @ 16" OC.

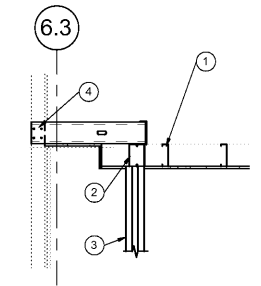
2 SECT @ CONF ROOM 2
3/4" = 1'-0"



- NOTES:
- 1 COLD FORMED CEILING JOISTS. RE: PLAN. PROVIDE BRIDGING AT 8'-0" OC MAX.
 - 2 NON-STRUCTURAL CF JOISTS INFILL
 - 3 L4X4 16 GA CLIP ANGLE. ATTACH TO EXISTING WF BEAM W/ PAF @ 16" OC. FASTEN TO TRACK W/ (2) #10 SCREWS @ 16" OC.
 - 4 EXISTING WF BEAM.
 - 5 EXISTING SPANDREL FRAMING.
 - 6 GYP SHEATHING. RE: ARCH.

1 SECT @ CONF ROOM 3
3/4" = 1'-0"

- DETAIL NOTES:
- 1 HSS POST. RE: PLAN
 - 2 3/8" PLATE REINF. RE: ROOF PLAN
 - 3 HSS BEAMS AT SHIPPING CONTAINER CEILING. RE: ROOF PLAN
 - 4 STIFFENERS AT BEARING POINT OVER STEEL POST. RE: S501
 - 5 W6 BEAM W/ ADDNL PLATES. RE: S501
 - 6 SPREAD FOOTING PER PLAN. FTGS MAY BE CONSTRUCTED AS THICKENED SLABS
 - 7 3.5"X3.8"X0'-6" BASE PL W/ (4) 1/4" DIA X 3" TITEN HD SCREW ANCHORS.



- DETAIL NOTES:
- 1 COLD FORMED CEILING JOISTS. RE: PLAN
 - 2 COLD FORMED BUILT-UP BOX BEAM. RE: PLAN
 - 3 (3) STUD PACK BELOW HSS AND CF BEAMS. USE 20 GA STUDS.
 - 4 LAP JOISTS W/ EXISTING STUDS AND PROVIDE (3) #10 SCREWS AT INTERFACE.

5 OFFICE SECTION
1/2" = 1'-0"

3 SHIPPING CONTAINER SECTION
1/2" = 1'-0"

KEMSTUDIO
1515 GENESEE ST SUITE 11 KANSAS CITY MO 64102
816 756 1808 f 816 756 1828
www.kemstudio.com

Stand Structural Engineering Inc
8234 Robinson Street
Overland Park, KS 66210
(913)214-2169
www.stand-sei.com

RELATED DOCUMENTS: This Drawing may be part of an integrated set of Construction Documents, including the Contract Agreement, the General and Supplemental Conditions of the Contract, Division-01 "General Requirements", and applicable "Technical Specification Sections". The Contract Documents are complementary; what is required by one is as binding as if required by all. Other documents affecting the Work may include Geotechnical recommendations, Manufacturer's Product Data and installation requirements, Shop Drawings and Coordination Drawings. Failure to review applicable documents does not reduce the obligation to provide complete and operational building components.

VERIFY EXISTING CONDITIONS AND DIMENSIONS prior to construction. Calculate and measure dimensions - DO NOT SCALE THE DRAWINGS unless so directed by the Architect. Dimensions indicated are to the face of a material unless otherwise indicated. Application of a material or equipment item to Work installed by others constitutes acceptance of that Work, and assumption of responsibility for subsequent satisfactory installation.

THIS DRAWING WAS PREPARED under the Engineer's supervision, and is an "Instrument of Service" intended solely for use on this Project. The Engineer's Services are performed solely in the interest of the Client - no obligation is assumed by the Engineer for the benefit of any other entity involved in the Construction Work. The information, ideas and designs indicated - including the overall form, arrangement and composition of spaces or building elements - constitutes the original, confidential, and unpublished Work and property of the Engineer. Possession of this Drawing confers no right or license to disclose to others the subject matter contained herein for any but authorized purposes. Unauthorized use, reproduction or distribution - in whole or in part - is strictly prohibited. Copyright © 2018 by Stand Structural Eng Inc.

PORT KC OFFICES
1000 BERKLEY PARKWAY - SPACE E177
KANSAS CITY, MO 64106
PROJECT NUMBER: A1718

SEAL
PAUL WESSERS
7 8094429
12/12/2017
REGISTERED PROFESSIONAL ENGINEER
STATE OF MISSOURI
01/12/2018

ISSUED FOR:

95% CDS	12.22.2017
PERMIT SET	01.12.2018

STRUCTURAL DETAILS
S500