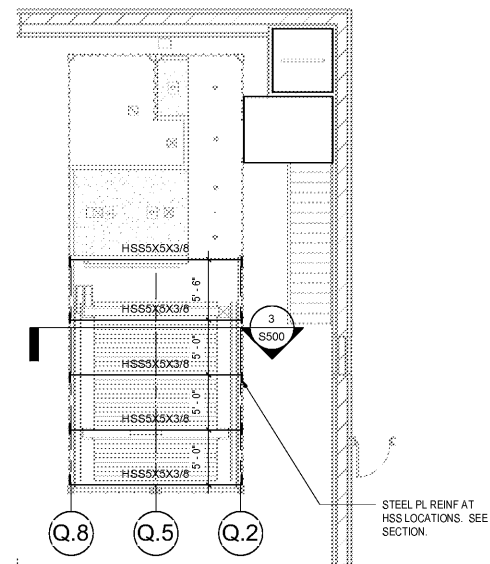
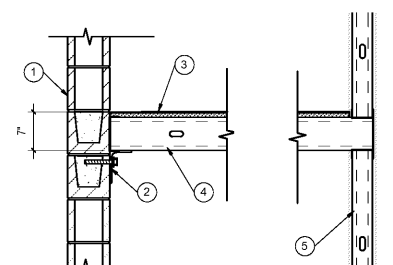


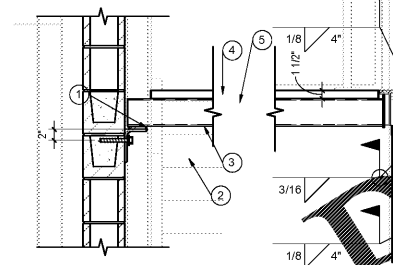
16 15 14 13 12 11 10 9 8 7 6 5 4 3 2 1



2 SHIPPING CONTAINER ROOF FRAMING PLAN
1/8" = 1'-0"



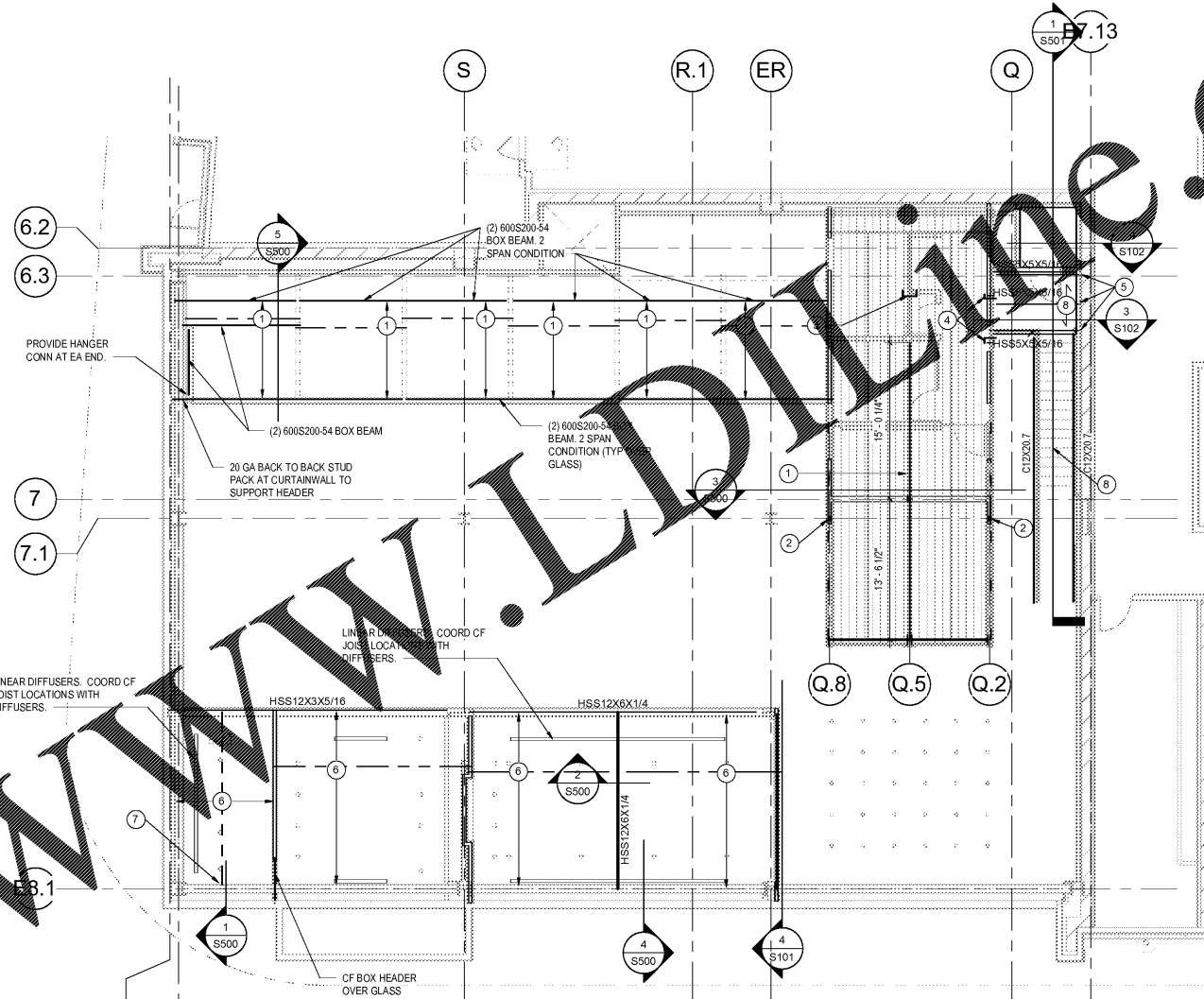
4 SECT @ MEZZ CLOSET
3/4" = 1'-0"



3 SECT @ STAIR LANDING
3/4" = 1'-0"

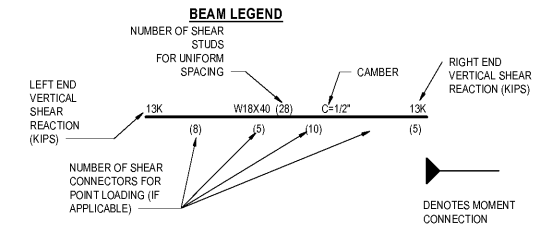
- NOTES:**
- EXISTING CMU WALL. VERIFY BOND BEAMS AT ANCHORAGE LOCATIONS OR GROUT CELLS SOLID AT ANCHORAGE LOCATIONS.
 - L6X4X5/16. ANCHOR TO CMU W/ 1/2" DIA X 4" TITEN HD SCREW ANCHORS @ 16" OC
 - 3/4" RATED SHEATHING. FIRE TREATED OR NON-COMBUSTIBLE
 - 6" 18 GA FLOOR JOISTS @ 16" OC.
 - LOAD BEARING CF STUDS BELOW FLOOR 20 GA MIN.

- NOTES:**
- EXISTING CMU WALL. VERIFY BOND BEAMS AT ANCHORAGE LOCATIONS OR GROUT CELLS SOLID AT ANCHORAGE LOCATIONS.
 - L6X4X5/16. ANCHOR TO CMU W/ 1/2" DIA X 4" TITEN HD SCREW ANCHORS @ 16" OC
 - 3/4" X 1/2" X 1/2" X 1/2" WELDED JOIST ANCHORS
 - METAL GRATING PER PLAN
 - LOAD BEARING CF STUDS AT PERIMETER SHIPPING CONTAINER. 20 GA MIN.
 - 6" SQ X 1/4" PL. FIELD WELD TO SHIPPING CONTAINER EDGE CHANNEL. THEN, WELD HSS BEAM TO PL.



1 MEZZANINE FRAMING PLAN
1/8" = 1'-0"

- GENERAL SHEET NOTES**
- REFERENCE SHEET S101 FOR STRUCTURAL GENERAL NOTES AND CHECK FOR ALL STRUCTURAL DETAILS. REVIEW NOTES & DETAILS FOR APPLICABILITY.
 - SEE ARCHITECTURAL DRAWING FOR DETAILS & DIMENSIONS NOT SHOWN.
- PLAN NOTES:**
- WB25 W/ ADDITIONAL PLATES DOWN CENTER OF SHIPPING CONTAINERS. RE: 3/S501.
 - PROVIDE STIFFENERS @ BEARING POINTS. RE: 3/S501.
 - PROVIDE 18 GA BENT PLATE AROUND CUT END OF CONTAINER WALL.
 - PROVIDE 18GA BENT PLATE @ OPENING.
 - ANCHOR HSS BEAM TO WALL PER 3/S102
 - 1000X162-43 CEILING JOISTS @ 16" OC
 - CEILING JOISTS TO BE ANCHORED TO EXISTING WIDE FLANGE BEAM @ EXISTING WALL
 - MONICHOOLS CLOSE MESH GCM GRATING. 1.5" DEEP, ALUMINUM



KEM STUDIO
1515 GENESEE ST SUITE 11 KANSAS CITY MO 64102
816 756 1808 f 816 756 1828

Stand Structural Engineering Inc
8234 Robinson Street
Overland Park, KS 66210
(913)214-2169
www.stand-se.com

RELATED DOCUMENTS: This Drawing may be part of an integrated set of Construction Documents, including the Contract Agreement, the General and Supplemental Conditions of the Contract, Division-01 "General Requirements", and applicable "Technical Specification Sections". The Contract Documents are complementary; what is required by one is as binding as if required by all. Other documents affecting the Work may include Geotechnical recommendations, Manufacturer's Product Data and installation requirements, Shop Drawings and Coordination Drawings. Failure to review applicable documents does not reduce the obligation to provide complete and operational building components.

VERIFY EXISTING CONDITIONS AND DIMENSIONS prior to construction. Calculate and measure dimensions - **DO NOT SCALE THE DRAWINGS** unless so directed by the Architect. Dimensions indicated are to the face of a material unless otherwise indicated. Application of a material or equipment item to Work installed by others constitutes acceptance of that Work, and assumption of responsibility for subsequent satisfactory installation.

THIS DRAWING WAS PREPARED under the Engineer's supervision, and is an "Instrument of Service" in the interest of the Client. The Engineer's Services are performed solely in the interest of the Client; no obligation is assumed by the Engineer for the benefit of any other party involved in the Construction Work. The information, ideas and designs indicated - including the overall form, arrangement and composition of spaces or building elements - constitutes the original, confidential, and unpublished Work and property of the Engineer. Possession of this Drawing confers no right or license to disclose to others the subject matter contained herein for any but authorized purposes. Unauthorized use, reproduction or distribution - in whole or in part - is strictly prohibited. Copyright © 2018 by Stand Structural Eng Inc.

PORT KC OFFICES
1000 BERKLEY PARKWAY - SPACE E177
KANSAS CITY, MO 64106
PROJECT NUMBER: A1718



ISSUED FOR:
95% CDS 12.22.2017
PERMIT SET 01.12.2018

MEZZANINE STRUCTURAL PLANS
S102