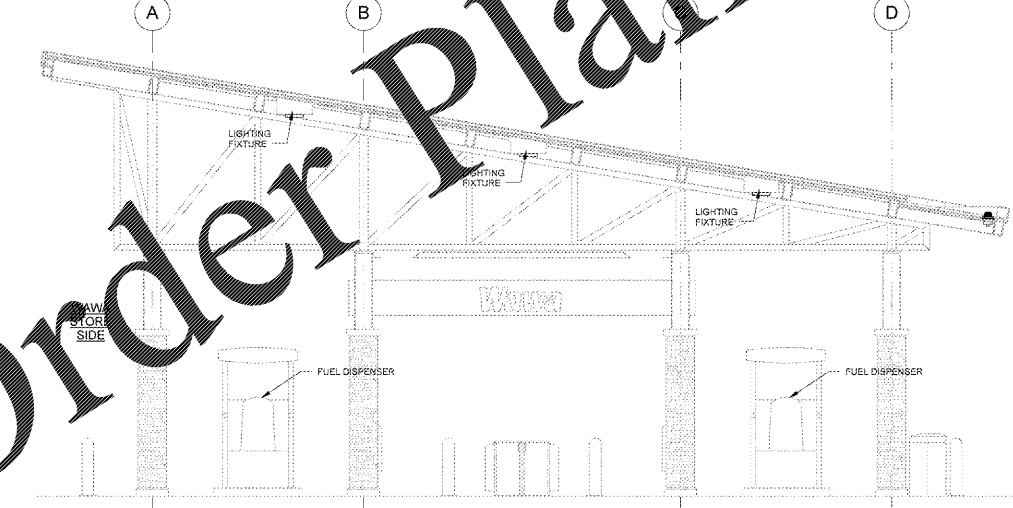


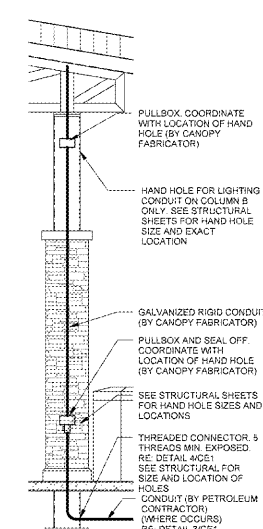
1 CANOPY ELECTRICAL REFLECTED CEILING PLAN  
CE1 1/4" = 1'-0"

Lighting Fixture Schedule				
TYPE	MANUF	CATALOG NO.	QUANT	WATTAGE / LAMPS / FIXTURE / MGT.
FD	LED - DECK MOUNT - SLOPED ADAPTER		114	114 W (SURFACE)

ALL LIGHT FIXTURES AND LAMPS SUPPLIED BY WAWA, G.C. TO COORDINATE INSTALLATION WITH E.C. AND CANOPY VENDOR. COORDINATE FIXTURE COUNT, LOCATIONS AND LAMP OUTPUT WITH THE LIGHTING ENGINEERING DRAWINGS.



2 CANOPY SIDE ELEVATION  
CE1 1/4" = 1'-0"



5 COLUMN SECTION  
CE1 3/8" = 1'-0"

- ELECTRICAL NOTES**
- ALL FIXTURES AND COMPONENTS SHALL BE GROUNDED BY A SEPARATE #10 GROUND WIRE.
  - PETROLEUM CONTRACTOR TO PULL WIRING FOR INTERCOM AT CANOPY (SUPPLIED BY OTHERS).
  - THE CONDUIT FOR THE "FD" FIXTURES TO RUN ALONG THE GUTTER PAN AND RUN TO THE FIXTURES IN THE FLUTES OF THE DECKING. NO CONDUIT SHOULD BE VISIBLE FROM BELOW THE CANOPY.
  - FOR DISPENSER DATA, VEEDER-ROOT SENSOR, AND INTERCOMMUSIC PROVIDE CONDUCTORS AND CONNECTIONS AS REQUIRED. COORDINATE WITH WAWA CONSTRUCTION MANAGER.
  - USE THIS CIRCUIT TO PROVIDE POWER TO 208 VOLT ILLUMINATED SIGN AT THIS LOCATION BETWEEN CANOPY COLUMNS AT APPROXIMATELY 12' AFG.
  - ELECTRICAL CONTRACTOR TO COORDINATE WITH PETROLEUM CONTRACTOR AND GENERAL CONTRACTOR TO MAKE SURE THAT SEAL OFF FITTINGS AS REQUIRED ARE PROVIDED FOR CONDUITS ENTERING THE FUEL DISPENSERS AND THAT THE ELECTRICAL INSTALLATION AT THE GAS CANOPY AND FUEL TANKS IS IN ACCORDANCE WITH NEC ARTICLE 514.
  - FOR BRANCH CIRCUITS OUT TO CANOPY AREA, IF CIRCUIT LENGTH EXCEEDS 100 FEET WIRE-CONDUIT MUST BE SIZED PER FBC-1412 I.A.B.C. 1.2 (FLORIDA ONLY).
  - LIGHT FIXTURES PROVIDED BY WAWA, G.C. TO COORDINATE INSTALLATION OF CONDUIT, WIRING AND FINAL CONNECTION WITH E.C. AND CANOPY VENDOR.
  - WAWA GOOSE SIGN, E.C. TO VERIFY EXACT LOCATION WITH G.C. AND ARCHITECTURAL DRAWINGS E.C. TO RUN WIRING, CONDUIT AND CONNECT TO LOCAL CIRCUITRY.

**TANKS AND CANOPY CONDUITS AND CONDUCTORS NOTE:**

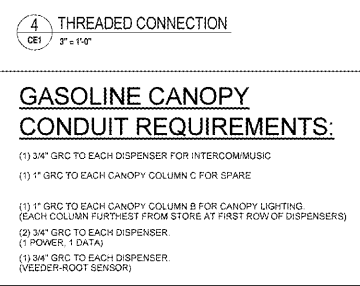
THE GENERAL CONTRACTOR SHALL FURNISH AND INSTALL ALL GRC CONDUIT, ASSOCIATED FITTINGS AND WIRE NECESSARY TO PROVIDE A COMPLETE ELECTRICAL SYSTEM FOR THE GAS CANOPY, FUEL TANKS, MUSIC AND INTERCOM SYSTEM.

HOWEVER, THE FOLLOWING CONDUIT SHALL BE PROVIDED AND INSTALLED BY THE CONTRACTOR INDICATED BELOW:

FUEL TANKS  
PETROLEUM CONTRACTOR SHALL FURNISH AND INSTALL THE CONDUIT FROM THE EDGE OF THE CONCRETE GANTRY PAD TO THE BASE OF THE CANOPY COLUMNS WHERE THEY WILL MAKE A THREADED CONNECTION (REFER TO DETAIL 40C1) CANOPY FABRICATOR SHALL FURNISH AND INSTALL THE THREADED CONNECTOR (MS & EXPOSED THREADS) AT THE BASE OF THE CANOPY COLUMN AND CONTINUE UP THROUGH THE COLUMN TO A SEAL OFF AND J-BOX AT 2'-4" THEN CONTINUE WITH RIGID CONDUIT TO THE BOTTOM OF THE CANOPY WHERE IT WILL TRANSITION INTO SEAL-TIGHT CONDUIT AND TERMINATE AT THE FIRST ROW OF LIGHTS. GC SHALL CONNECT INTO THE FIRST ROW OF LIGHTS AND COMPLETE THE ELECTRICAL CANOPY LIGHTING.

GAS CANOPY  
PETROLEUM CONTRACTOR SHALL FURNISH AND INSTALL THE CONDUIT FROM THE EDGE OF THE CONCRETE GANTRY PAD TO THE BASE OF THE CANOPY COLUMNS WHERE THEY WILL MAKE A THREADED CONNECTION (REFER TO DETAIL 40C1) CANOPY FABRICATOR SHALL FURNISH AND INSTALL THE THREADED CONNECTOR (MS & EXPOSED THREADS) AT THE BASE OF THE CANOPY COLUMN AND CONTINUE UP THROUGH THE COLUMN TO A SEAL OFF AND J-BOX AT 2'-4" THEN CONTINUE WITH RIGID CONDUIT TO THE BOTTOM OF THE CANOPY WHERE IT WILL TRANSITION INTO SEAL-TIGHT CONDUIT AND TERMINATE AT THE FIRST ROW OF LIGHTS. GC SHALL CONNECT INTO THE FIRST ROW OF LIGHTS AND COMPLETE THE ELECTRICAL CANOPY LIGHTING.

PETROLEUM CONTRACTOR SHALL ALSO INSTALL THE CONDUIT FROM THE EDGE OF THE CONCRETE GANTRY PAD TO THE TERMINATION POINT FOR THE MUSIC AND INTERCOM SYSTEMS.

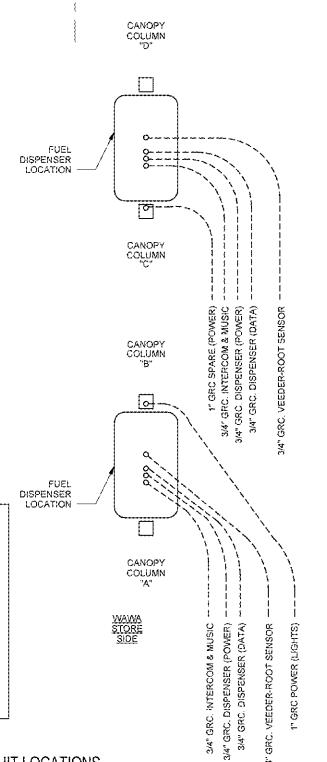


4 THREADED CONNECTION  
CE1 2" = 1'-0"

**GASOLINE CANOPY CONDUIT REQUIREMENTS:**

(1) 3/4" GRC TO EACH DISPENSER FOR INTERCOMMUSIC  
(1) 1" GRC TO EACH CANOPY COLUMN C FOR SPARE

(1) 1" GRC TO EACH CANOPY COLUMN B FOR CANOPY LIGHTING (EACH COLUMN FURTHEST FROM STORE AT FIRST ROW OF DISPENSERS)  
(2) 3/4" GRC TO EACH DISPENSER (1 POWER, 1 DATA)  
(1) 3/4" GRC TO EACH DISPENSER (VEEDER-ROOT SENSOR)



3 CANOPY CONDUIT LOCATIONS  
CE1 1/12" = 1'-0"

Order Plans @ WWW.LDILINE.COM

1925 Prospect Ave.  
Orlando, FL 32814  
P (407) 661-9100  
F (407) 661-9101  
www.ldi.com

**Calaci & Ret...**  
Architects Engineers

CLIENT NAME  
**WAWA**  
260 WEST BALTIMORE PIKE  
WAWA, PENNSYLVANIA 19063

PROJECT NAME  
**WAWA STACKED 8 GAS CANOPY 2017.01 STORE #5294-CNY**

26508 US 19 NORTH  
CLEARWATER, FL 33761

SHEET TITLE  
**ELECTRICAL CANOPY PLANS, DETAILS, SCHEDULES**

NO.	DESCRIPTION	DATE	BY	CHKD
1	PRELIMINARY SET	01/27/2017	BRUNN	JPM
2	BID SET	02/08/2017	BRUNN	JPM

PROJECT NO.  
21052

DATE  
01/27/2017

DRAWN  
BRUNN

CHECKED  
JPM

CE1