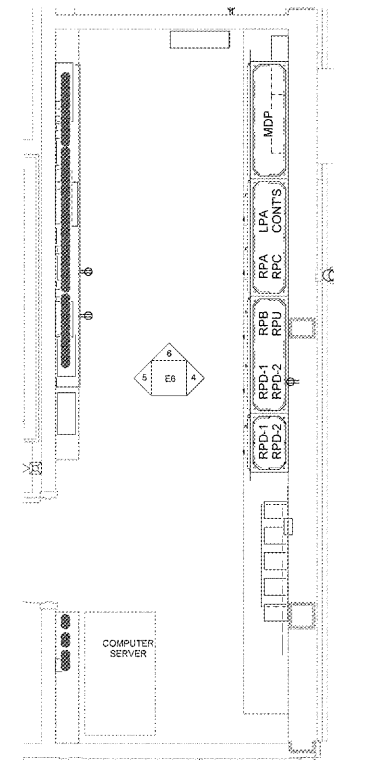
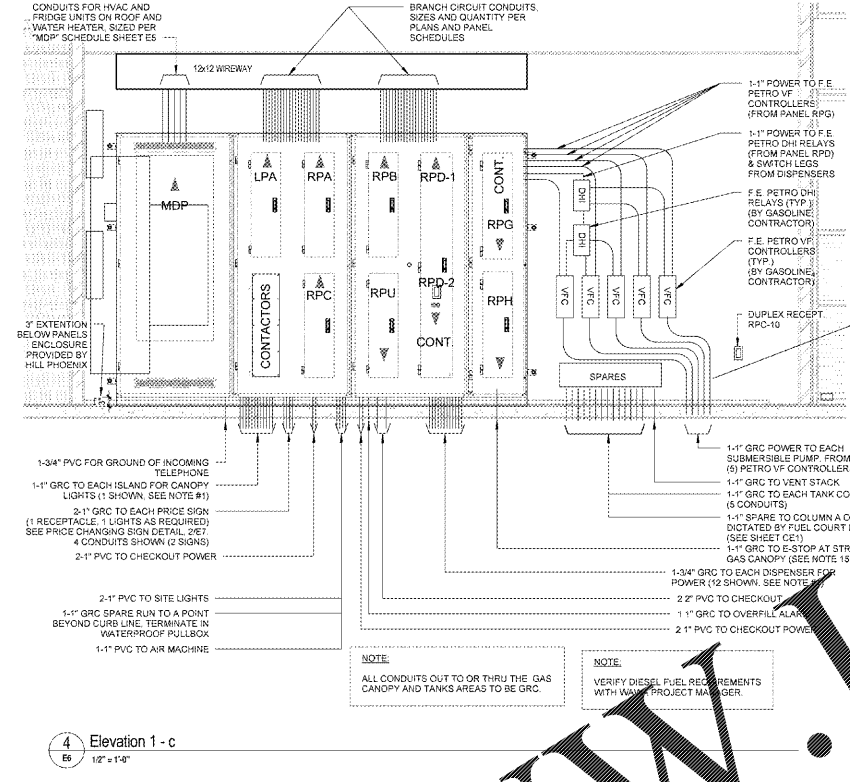


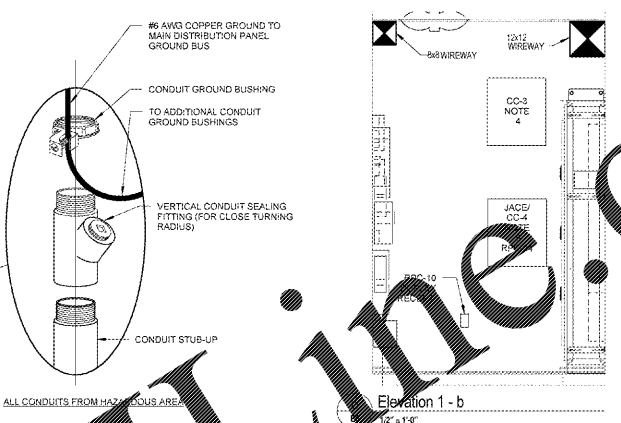
Order Plans



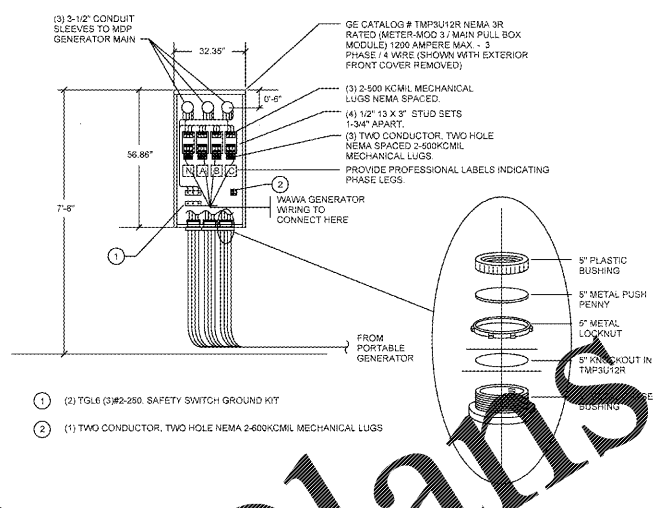
1 ELECTRICAL ROOM - PLAN
12' x 14'



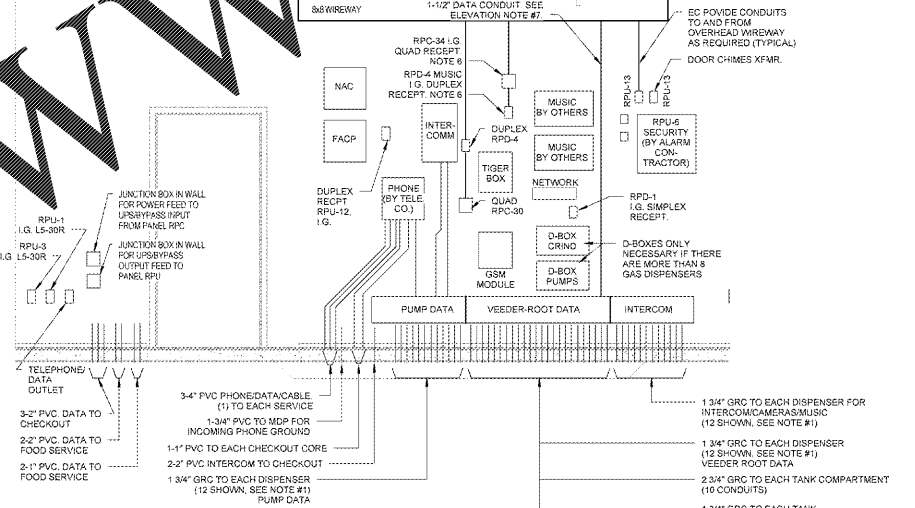
4 Elevation 1 - c
12' x 14'



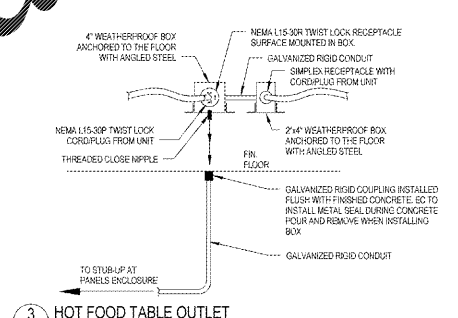
Elevation 1 - b
12' x 14'



2 300KW CONNECTION BOX DETAIL
12' x 14'



5 Elevation 1 - a
12' x 14'



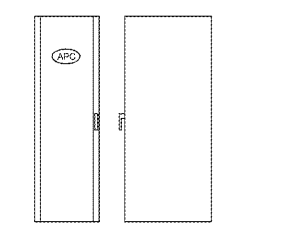
3 HOT FOOD TABLE OUTLET
NOT TO SCALE

- ELECTRICAL ROOM ELEVATION NOTES:**
- CONDUIT LAYOUT PLAN SHOWN ON PLAN HAS PROVISIONS FOR 12 DISPENSERS. THE ACTUAL NUMBER OF CONDUITS REQUIRED WILL BE DEPENDENT ON THE ACTUAL CONFIGURATION AND ACTUAL NUMBER OF DISPENSERS INSTALLED. IF FEWER DISPENSERS ARE INSTALLED, AND THEREFORE SUFFICIENT SPACE EXISTS, THE CONDUITS ARE TO BE INSTALLED IN A SINGLE ROW.
 - PROVIDE 2" UNDERGROUND CONDUIT FROM SPARES WAREWAY TO INTERCOM WAREWAY FOR COMMUNICATION DATA WIRING. SEE SHEET EA.
 - ALL SPARE CONDUITS WHICH TRAVERSE THE HAZARDOUS AREA SHOULD BE PACKED WITH MINERAL FIBER FOLLOWED WITH DUCT SEAL AND THEN SEALED WITH A THREADED PLUG OR CAP AS APPROPRIATE FOR THE SPECIFIC CONFIGURATION AT EACH END OF THE CONDUIT.
 - PANEL JACE/CC-4 AND REQUIRED CONDUIT SHALL BE PROVIDED BY BAS CONTRACTOR.
 - JUNCTION BOX, RECEPTACLES, AND ASSOCIATED CONDUIT TO HILL PHOENIX PANEL SHALL BE PROVIDED BY ELECTRICAL CONTRACTOR. JUNCTION BOX SHALL BE SURFACE MOUNTED.
 - RUN 1" CONDUIT TO MANAGER'S OFFICE. RUN CONDUIT DOWN INSIDE MANAGER'S OFFICE WALL AND STUB-OUT AT VEEDER ROOT EQUIPMENT LOCATION. ALSO RUN 1" CONDUIT FROM MANAGER'S OFFICE VEEDER ROOT ABOVE CEILING TO PANEL RPD IN ELECTRICAL ROOM.
 - ALL CONDUITS RUNNING OUT TO CLASSROOM AREAS SUCH AS THE GAS CANOPY AND TANKS AREA SHALL BE GNS TYPE CONDUIT FOR ENTIRE RUN OF CONDUIT. CONDUITS TO OTHER AREAS SUCH AS MONUMENT SIGNS, AIR PUMP, SITE LIGHTING, ETC. MAY BE PVC.

- GASOLINE CONDUIT REQUIREMENTS:**
- 1" GRC SPARE TO COLUMN A OR C AS DICTATED BY FUEL COURT LAYOUT. (SEE SHEET CE1)
 - 1" GRC TO CANOPY COLUMN FOR LIGHTING (COLUMN FURTHEST FROM STORE) - COLUMN B. (SEE SHEET CE1 FOR COUNT)
 - 3/4" GRC TO EACH DISPENSER (1 POWER, 1 DATA, 1 MUSIC/INTERCOM, 1 VEEDER ROOT SENSOR)
 - 2" GRC TO EACH TANK STP CONTAINMENT SUMP (VEEDER-ROOT 1 POWER, 1 SPARE)
 - 3/4" GRC TO EACH TANK STP COMPARTMENT SUMP (VEEDER-ROOT MAGNOSTRICTIVE PROBE AND VEEDER ROOT SENSOR)
 - 3/4" GRC TO EACH TANK MULTI-PORT CONTAINMENT SUMP (VEEDER-ROOT MULTI-PORT FILL SUMP)
 - 3/4" GRC TO EACH TANK (VEEDER-ROOT BRNE INTERSTITIAL RESERVOIR)
 - 1" GRC TO OVERFILL ALARM (ON VENT STACK)
 - 1" GRC TO VENT STACK (SPARE)
 - 1" GRC TO E-STOP AT STREET SIDE OF GAS CANOPY (SEE NOTE 16 ON SHEET EA)

BUILDING AUTOMATION SYSTEM (BAS)

GENERAL CONTRACTOR TO INSTALL WATER METER(S) FOR B.A.S. PER PLUMBING DRAWINGS PA, AND PROVIDE UNDERGROUND CONDUIT TO EQUIPMENT CC-3 SHOWN ON DRAWING EQ. B.A.S. REFRIGERATOR COMPANY INSTALLERS SHALL SUPPLY AND INSTALL B.A.S. AND CENTRAL WIRING PER CURRENT EDITION OF 'BUILDING AUTOMATION SYSTEM 2010 (LITE) MASTER-BUILT NEW STORES B.A.S. MASTER SPEC' BY HVAC CONCEPTS INC. AND AVAILABLE IN PLAN EXPRESS PROJECT FOLDER



7 DATA CABINET DETAIL
12' x 14'

1925 Prospect Ave.
Orlando, FL 32814
P (407) 661-9100
F (407) 661-9101
www.r.j.d.com

Robb Architects
Architects & Engineers

CLIENT NAME
WAWA
260 WEST BALTIMORE PIKE
WAWA, PENNSYLVANIA 19083

PROJECT NAME
WAWA F85FB 2017.01 STORE #5294-CNY

26508 US 19 NORTH
CLEARWATER, FL 33761

SHEET TITLE
ELECTRICAL ROOM PLAN AND ELEVATIONS

Revision	Number	Date	Description
1	01/17/2017	01/17/2017	PRELIMINARY
2	07/28/2017	07/28/2017	FILED FOR PERMIT
3	09/04/2017	09/04/2017	BID SET

PROJECT NO.	2016022
DATE	01/17/2017
DRAWN BY	BA
CHECKED BY	Checker

E6