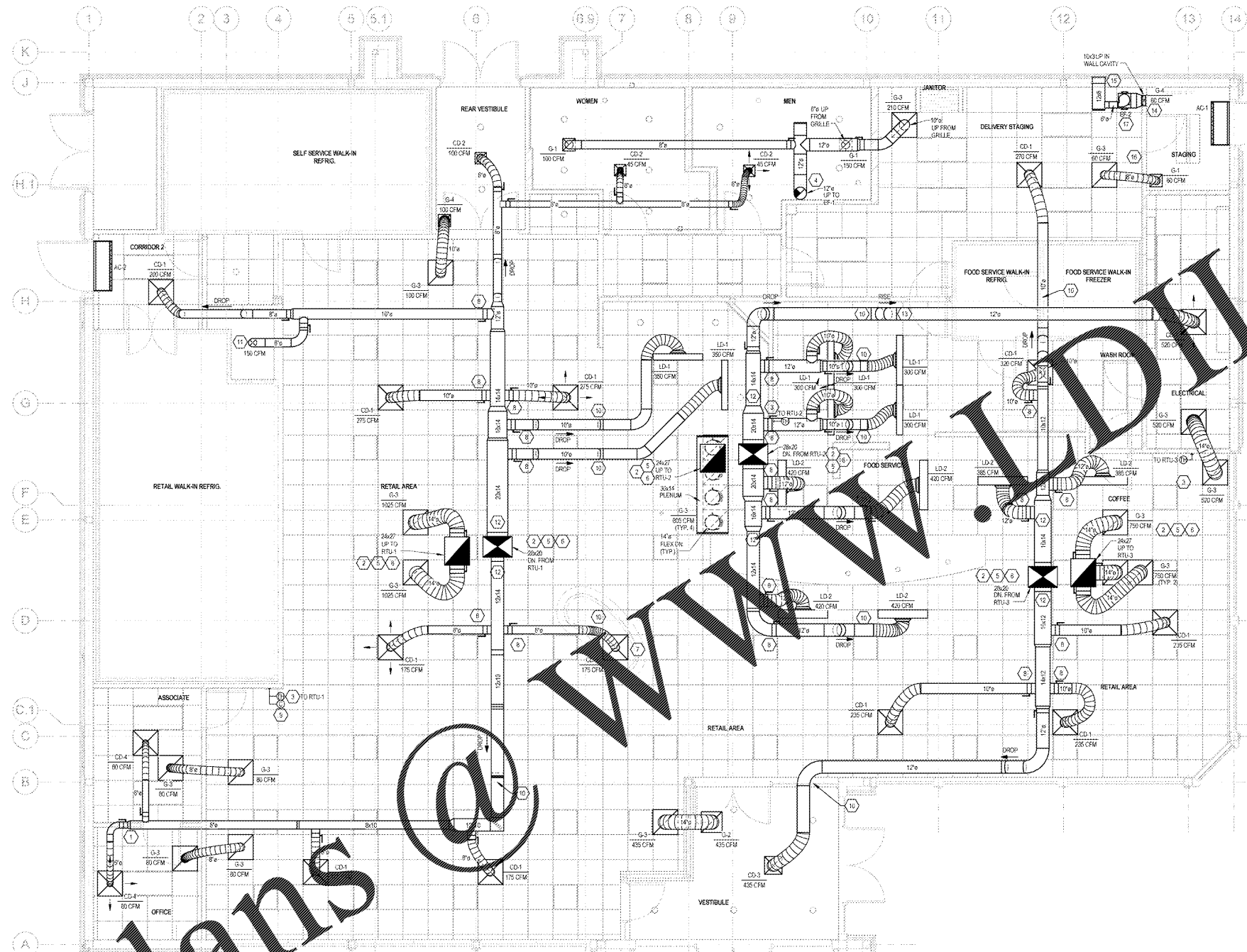


# Order Plans



HVAC FLOOR PLAN  
10/10/2017

- KEY NOTES:**
- REMOTE SMOKE DETECTOR TEST STATIONS FOR RTU-1, 2, 3 & 4 PROVIDED BY RTU MANUFACTURER. TEST STATIONS TO BE MOUNTED ON THE MANAGER'S OFFICE WALL. COORDINATE LOCATIONS WITH ARCHITECTURAL PLANS. SECURITY CONTRACTOR SHALL WIRE RTU FACTORY MOUNTED SMOKE DETECTORS TO SECURITY FIRE ALARM PANEL. MECHANICAL CONTRACTOR SHALL PROVIDE WIRING BETWEEN COMPONENTS AS WELL AS WIRING TO SHUT DOWN THE A/C FAN UPON ACTIVATION OF THE SMOKE DETECTOR. O.G. TO TEST THE SMOKE DETECTOR FUNCTIONS WITH THE WAWA PROJECT MANAGER.
  - FACTORY INSTALLED SMOKE DETECTOR IN MAIN SUPPLY AND RETURN OF EACH ROOF TOP UNIT.
  - OWNER SHALL PROVIDE ONE COMBINATION TEMPERATURE/HUMIDITY SENSOR FOR EACH MECHANICAL UNIT. SEE SCHEDULE 10. G.C. SHALL INSTALL AND WIRE TO UNIT. BAS CONTRACTOR SHALL CONNECT TO MECHANICAL UNIT ON UNIT.
  - COORDINATE EXACT LOCATION OF EXHAUST PENETRATION WITH ARCHITECTURAL ROOF PLAN. INSTALLATION OF EXHAUST WORK DOWN FROM FAN INTO CEILING/ROOF SHALL BE CONNECTED TO EXHAUSTIBLES.
  - REFER TO TYPICAL ROOM DETAILS ON SHEET M3.
  - PROTECT ALL CONNECTIONS BETWEEN EXISTING WORK AND MECHANICAL UNITS.
  - ENTER THROUGH CEILING TO INSTALL FUSERS ABOVE CD (EXPRESS TRAIL). CHECK FOR AIR FLOWS AWAY FROM THE LOCATED ON PLAN.
  - COORDINATE DUCT WITH STRUCTURE IN THIS AREA. CORRELATE TAKEOFF LOCATIONS WITH TRUSS WEB DETAILS.
  - OWNER SHALL PROVIDE CO2 SENSOR FOR MECHANICAL UNIT. G.C. SHALL INSTALL AND WIRE TO UNIT. BAS CONTRACTOR SHALL CONNECT TO MECHANICAL UNIT.
  - ROUTE DUCT UNDER BEAM/TRUSS AT THIS LOCATION.
  - ROUTE SUPPLY DUCT DOWN THROUGH GYPSUM BOARD CEILING AND INTO CAVITY ABOVE FREEZER. SEAL AIRING DUCT AT PENETRATION AND RIGHT AND TERMINATE DUCT WITH OPEN END.
  - COORDINATE AND ROUTE MAIN DUCT HIGH IN JOIST SPACE. AVOID CONFLICTS WITH UTILITIES.
  - ROUTE DUCT BACK UP INTO TRUSS WEB IN THIS AREA.
  - MOUNT CENTER OF EXHAUST GRILLE AT 12" ABOVE FINISHED FLOOR. ROUTE DUCT SIZED AS SHOWN FROM GRILLE UP IN WALL CAVITY TO ABOVE CEILING THEN TO EXHAUST FAN AND OUT TO EXTERIOR WALL LOUVER. COORDINATE DUCT ROUTING WITH ALL OTHER TRADES.
  - 12"X6" EXTERIOR WALL LOUVER MODEL EKH401 AS MANUFACTURED BY GREENHECK. INSTALL PER MANUFACTURER'S RECOMMENDED INSTALLATION INSTRUCTIONS. FLORIDA PRODUCT APPROVAL #10081. PROVIDE WITH BRD SCREEN, 1-1/2" FLANGE, AND ALUMINUM MILL FINISH.
  - EMERGENCY SHUTOFF SWITCH AND WALL PLACARD INDICATING VENTILATION SYSTEM EMERGENCY SHUTOFF PROVIDED BY OTHERS. REFER TO ELECTRICAL AND ARCHITECTURAL DRAWINGS.
  - INSTALL EXHAUST FAN PER DETAIL SHEET M3. FAN SHALL BE WIRED TO EMERGENCY SHUTOFF SWITCH PROVIDED BY OTHERS. REFER TO ARCHITECTURAL AND ELECTRICAL DRAWINGS.

| HVAC LEGEND |   |
|-------------|---|
| SYMBOL      | DESCRIPTION                               |
|             | NEW RECTANGULAR OR ROUND DUCT             |
|             | FLEXIBLE DUCT                             |
|             | SUPPLY AIR DUCTWORK UP THROUGH PLAN       |
|             | RETURN AIR DUCTWORK UP THROUGH PLAN       |
|             | EXHAUST AIR DUCTWORK UP THROUGH PLAN      |
|             | 90° ELBOW WITH TURNING VANES              |
|             | MANUAL AIR VOLUME CONTROL DAMPER          |
|             | 4 WAY SUPPLY DIFFUSER                     |
|             | 5 WAY SUPPLY DIFFUSER                     |
|             | 2 WAY OPPOSED SUPPLY DIFFUSER             |
|             | 2 WAY CORNER SUPPLY DIFFUSER              |
|             | RETURN AIR DEVICE                         |
|             | EXHAUST AIR DEVICE                        |
|             | AIR CURTAIN                               |
|             | LINEAR SLOT DIFFUSER WITH PLENUM          |
|             | COMBINATION TEMPERATURE/HUMIDITY SENSOR   |
|             | CO2 SENSOR                                |
|             | TYPE MARK                                 |
|             | RTU-10                                    |
|             | MECHANICAL EQUIPMENT TAG                  |
|             | CONDENSATE PIPING                         |
|             | ROOF MOUNTED EXHAUST FAN                  |
|             | INLINE EXHAUST FAN                        |
|             | RTU-X<br>PACKAGED ROOFTOP AIR CONDITIONER |

1925 Prospect Ave.  
Orlando, FL 32814  
P (407) 661-9100  
F (407) 661-9101  
www.cpb.com

**Cubaci & Retz**  
Architects Engineers

CLIENT NAME  
**WAWA**  
260 WEST BALTIMORE PIKE  
WAWA, PENNSYLVANIA 19063

PROJECT NAME  
**WAWA F85FB 2017.01 STORE #5294-CNY**  
26008 U.S. 19 NORTH  
CLEARWATER, FL 33761

SHEET TITLE  
**HVAC FLOOR PLAN**

| No. | Description | Date       |
|-----|-------------|------------|
| 1   | PRELIMINARY | 01/17/2017 |
| 2   | PRELIMINARY | 07/26/2017 |
| 3   | BID SET     | 09/06/2017 |

| PROJECT NO. | DATE       | BY   | CHECKED |
|-------------|------------|------|---------|
| 2010202     | 01/17/2017 | WAWA | WAWA    |