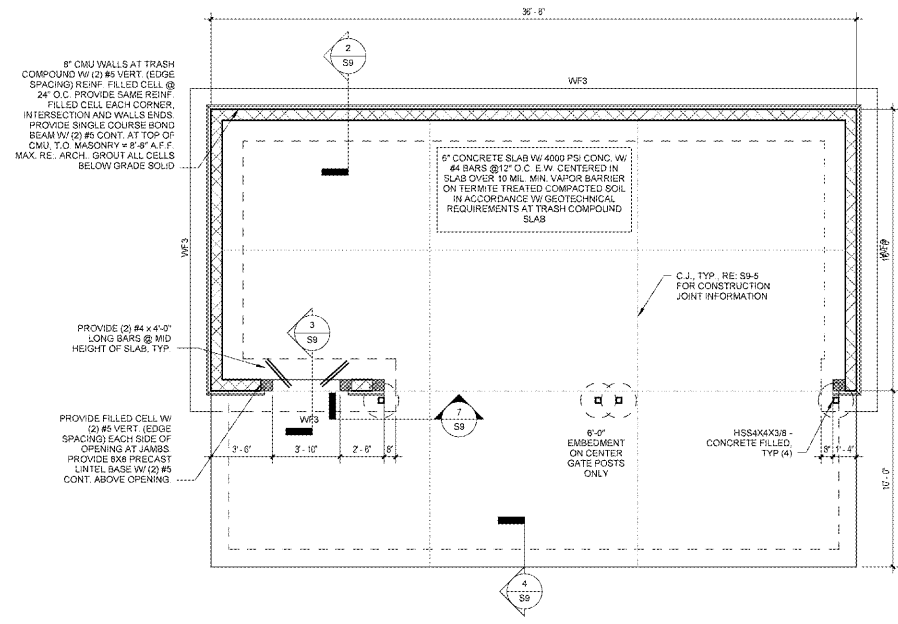
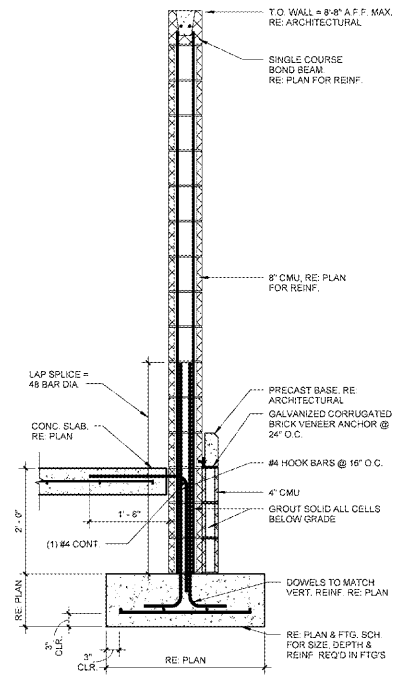


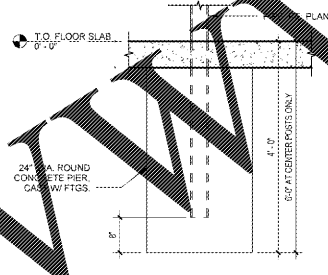
Order Plans @



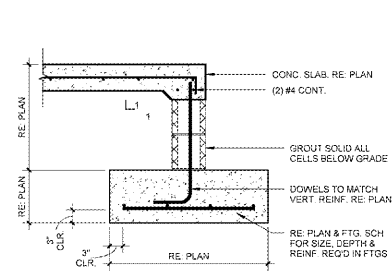
1 FOUNDATION PLAN
S9 1/4" = 1'-0"



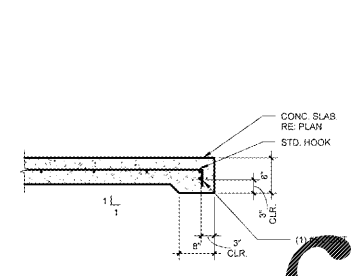
2 FOUNDATION DETAIL
S9 3/4" = 1'-0"



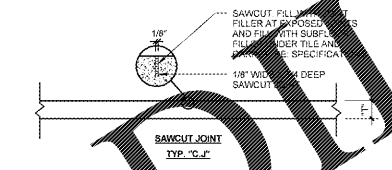
7 COLUMN ENCASED IN CONCRETE
S9 3/4" = 1'-0"



3 SLAB DETAIL
S9 3/4" = 1'-0"



4 THICKENED EDGE DETAIL
S9 3/4" = 1'-0"



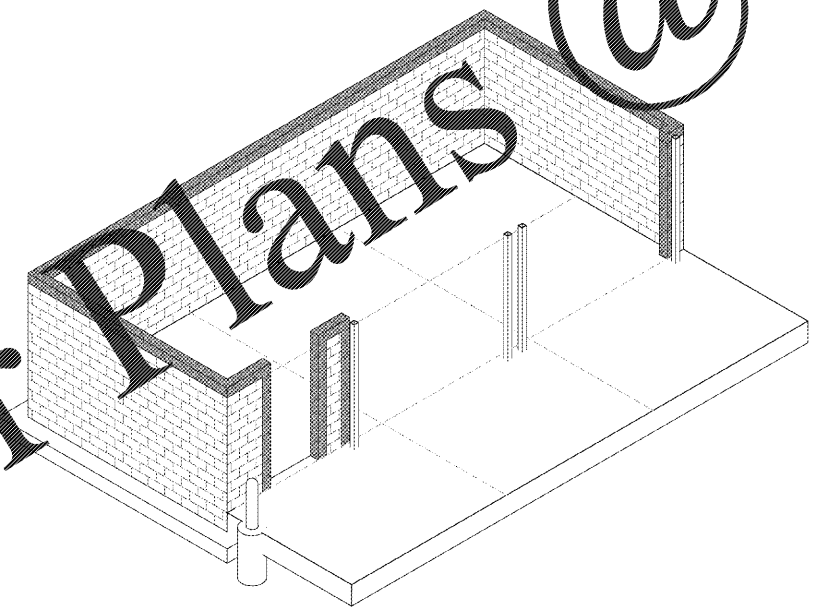
5 GENERAL SLAB JOINT INFORMATION
S9 3/4" = 1'-0"

SLAB JOINT NOTES:
 - RE PLAN FOR SLAB THICKNESS "T", REINFORCING AND SUBBASE
 - CONTROL JOINTS TO BE EITHER A SAWCUT OR CONSTRUCTION JOINT.
 - SAWCUT JOINT SHALL BE 1/8" WIDE X 1/4" DEEP CUT MADE WITHIN 24 HRS OF POUR. W/VE SHALL BE CONTINUOUS @ ALL C.J.S. U.O.N. ON PLANS

GENERAL NOTES:
 - EXTERIOR FOOTINGS HEREIN ARE RELATIVE TO ADJACENT GRADE. THE TOP OF ALL EXTERIOR FOOTINGS SHALL BE -2'-0"
 - RE ARCHITECTURAL/PLUMBING DRAWINGS FOR DRAIN SLOPES, ELEVATIONS AND SLAB RECESSES.
 - OPENING/RE-ENTRANT CORNER, TYP. PROVIDE (2) #4 X 4'-0" LONG BARS @ MID-HEIGHT OF SLAB.

STRUCTURAL - WALL FOUNDATION SCHEDULE			
MARK	WIDTH	THICKNESS	BOTTOM REINF
WFS	3'-0"	1'-0"	(4) #5 CONT. #5 @ 14" TRANS.

6 STRUCTURAL 3D VIEW
S9



1925 Prospect Ave.
Orlando, FL 32814
P (407) 661-9100
F (407) 661-9101
www.r.p.d.com

Cabalaci & Retam
Architects Engineers

CLIENT NAME
WAWA
260 WEST BALTIMORE PIKE
WAWA, PENNSYLVANIA 19063

PROJECT NAME
WAWA FLRC17 2017.01 STORE #5294-CNY
26008 U.S. 19 NORTH
CLEARWATER, FL 33761

SHEET TITLE
TRASH COMPOUND

Revision Schedule	
No.	Description
1	PRELIMINARY
2	PRELIMINARY
3	PRELIMINARY
4	PRELIMINARY
5	PRELIMINARY
6	PRELIMINARY
7	PRELIMINARY
8	PRELIMINARY
9	PRELIMINARY
10	PRELIMINARY

DATE: 01/02/2017
DRAWN BY: [Name]
CHECKED BY: [Name]
IN CHARGE: [Name]