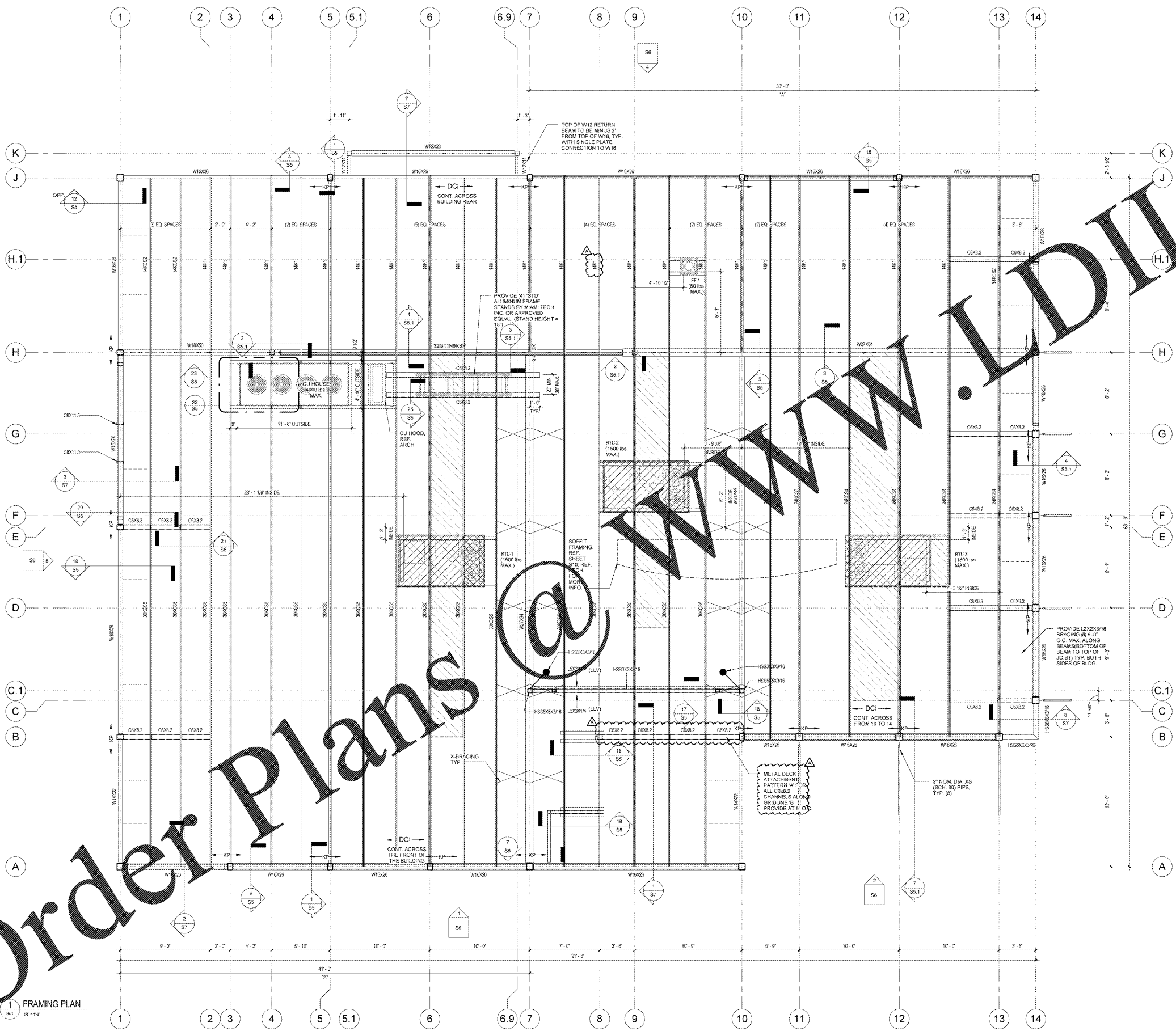


Order Plans



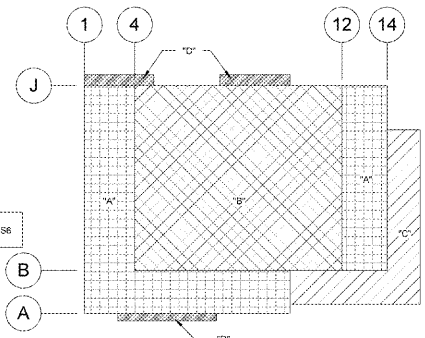
MAXIMUM RTU LOAD TABLE (KIP) (145MPH)

MARK	UPLIFT	DOWNWARD
RTU-1	0.7	1.5
RTU-2	0.7	1.5
RTU-3	0.7	1.5
CU HOUSE	1.0	1.0

MECHANICAL EQUIPMENT SCHEDULE

MARK	R.O. LENGTH	R.O. WIDTH
RTU-1	7'-7 1/2"	4'-1 1/2"
RTU-2	7'-7 1/2"	4'-2 3/4"
RTU-3	7'-7 1/2"	4'-2 3/4"

ALL DIMENSIONS MUST BE VERIFIED BY CONTRACTOR WITH EQUIPMENT SUPPLIER PRIOR TO FABRICATION OF STEEL. DIMENSIONS PROVIDED ARE BASED ON COOK GRAVITY VENTS AND LENNOX RTU'S SHOWN ON DRAWING #2



2 DECK PATTERN PLAN
SCALE: 3/8" = 1'-0"

STRUCTURAL - DECK CLOSURE ANGLE SCHEDULE

MARK	SIZE	ON CENTER FASTENER SPACING	NOTES
DC1	L4X4X1/4"	REF. S1.1, 2 & S5-15	@ STL TURNED DOWN

METAL DECK INFORMATION

PATTERN "A"
- 1 1/2" DEEP 20-GAUGE (WR) GALVANIZED DECK
- FASTEN USING (7) 5/8" PUDDLE WELDS @ EACH SUPPORT PER 36" WIDTH [36"] (7) #10 TEK SCREWS @ MIDSPAN OF SIDELAPS, AND 5/8" PUDDLE WELDS @ 6" O.C. ALONG EDGES

PATTERN "B"
- 1 1/2" DEEP 20-GAUGE (WR) GALVANIZED DECK
- FASTEN USING (7) 5/8" PUDDLE WELDS @ EACH SUPPORT PER 36" WIDTH [36"] (4) #10 TEK SCREWS @ MIDSPAN OF SIDELAPS, AND 5/8" PUDDLE WELDS @ 6" O.C. ALONG EDGES

PATTERN "C"
- 1 1/2" DEEP 22-GAUGE (WR) GALVANIZED DECK
- FASTEN USING (7) 5/8" PUDDLE WELDS @ EACH STRUCTURAL STEEL SUPPORT OR #10 TEK SCREWS @ 6" O.C. @ EACH JOINT GAUGE FRAMING SUPPORT PER 36" WIDTH [36"] (1) #10 TEK SCREWS @ MIDSPAN OF SIDELAPS, AND 5/8" PUDDLE WELDS @ 6" O.C. AT STRUCTURAL STEEL OR #16 TEK SCREWS @ 6" O.C. AT L.G. FRAMING ALONG EDGES

PATTERN "D"
- 1 1/2" DEEP 22-GAUGE (WR) GALVANIZED DECK
- FASTEN USING (7) 5/8" PUDDLE WELDS @ EACH STRUCTURAL STEEL SUPPORT OR #10 TEK SCREWS @ 6" O.C. @ EACH JOINT GAUGE FRAMING SUPPORT PER 36" WIDTH [36"] (1) #10 TEK SCREWS @ MIDSPAN OF SIDELAPS, AND 5/8" PUDDLE WELDS @ 6" O.C. AT STRUCTURAL STEEL OR #16 TEK SCREWS @ 6" O.C. AT L.G. FRAMING ALONG EDGES

GENERAL NOTES

- ALL LOADS GIVEN ARE ASD
- SPECIAL LOADING TAKEN INTO ACCOUNT IN RCS JOIST SELECTION
- ALL JOISTS TO BE SPACED EQUALLY AND NOT TO EXCEED 5'-0" O.C. MAX SPACING UNLESS OTHERWISE DIMENSIONED IN PLAN.
- REFERENCE SECTIONS / DETAILS AS REQUIRED FOR ADDED JOIST BRACING AND ASSOCIATED LOADING
- POSITION ALL RTUS ON SPECIAL JOISTS AS SHOWN BETWEEN BRIDGING AND BRACING FOR REQUIRED CLEARANCES
- A MIN. OF A SINGLE LINE OF BOTTOM CHORD BRIDGING MUST BE PROVIDED NEAR THE FIRST BOTTOM CHORD PANEL POINTS @ EACH END OF THE JOIST. UPLIFT BRIDGING
- REF. S1.1-3 FOR FURTHER INFORMATION ON TYPICAL JOIST X-BRACING REQUIREMENTS
- JOIST SUPPLIER TO PROVIDE MIN. STD. BRIDGING AND BRACING PER S.I.
- BRACE MEMBER "UP"
- BRACE MEMBER "DOWN"
- DENOTES AREAS OF BRIDGING AND BRACING WHERE DISCONTINUOUS. JOIST SUPPLIER TO PROVIDE X-BRACING AS REQUIRED.
- C = CAMBER
- "A" = HSS3 5X2.5X3/16 LAID FLAT WELDED ATOP OF W-BEAM BETWEEN JOISTS, REF. S5-15
- "KP" = KNIFE PLATE THRU COLUMN IN DIRECTION SHOWN. SLOTTED HOLES NOT PERMITTED AT SPECIFIED LOCATIONS. PROVIDE 1 1/2" MIN. EDGE DISTANCE FOR BOLT HOLES ALL SIDES OF PLATE.

1925 Prospect Ave.
Orlando, FL 32814
P (407) 661-9100
F (407) 661-9101
www.rp.com

CLIENT NAME
WAWA
260 WEST BALTIMORE PIKE
WAWA, PENNSYLVANIA 19083

PROJECT NAME
WAWA F85FB 2017.01 STORE #5294-CNY
26000 US 19 NORTH
CLEARWATER, FL 33761

SHEET TITLE
ROOF FRAMING PLAN AND NOTES

Revision Schedule

No.	Description	Date
1	PRELIMINARY	01/17/2017
2	REVISION	01/26/2017
3	PRE-BID REVIEW SET	07/26/2017
4	BID SET	08/08/2017

DATE: 01/26/2017
DRAWN BY: [Signature]
CHECKED BY: [Signature]

S4.1