

1 PUBLIC RESTROOM ACCESSORIES DIAGRAM
A8.1 38" x 14"

GENERAL NOTES

- ALL DIMENSIONS SHALL BE TO FACE OF FINISH U.O.C.
- INSTALL A BEAD OF CLEAR SILICONE AROUND ALL TOILET SENSORS AND ESCUTCHEON RINGS.

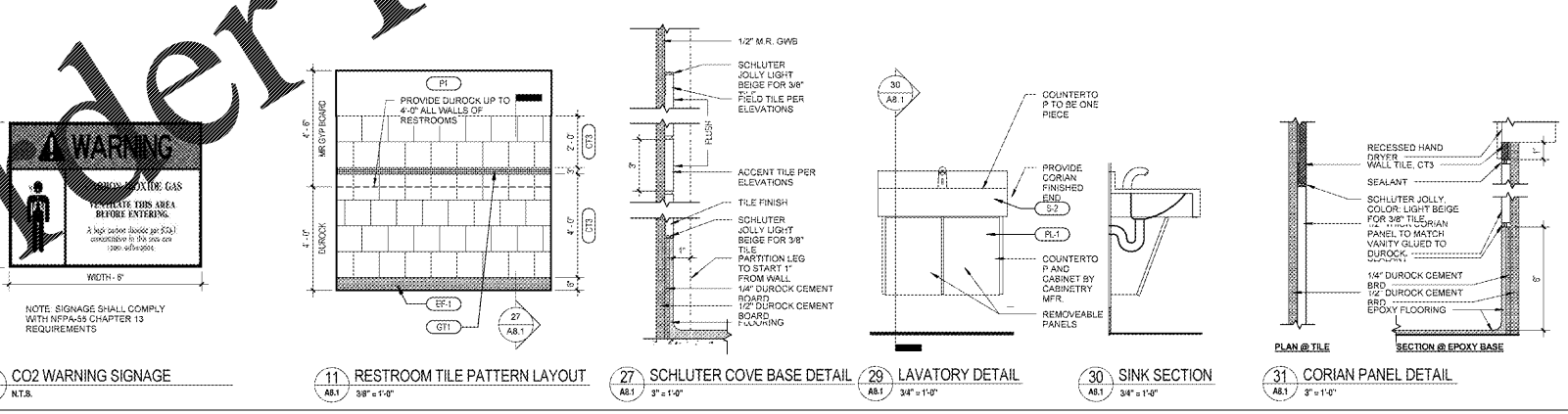
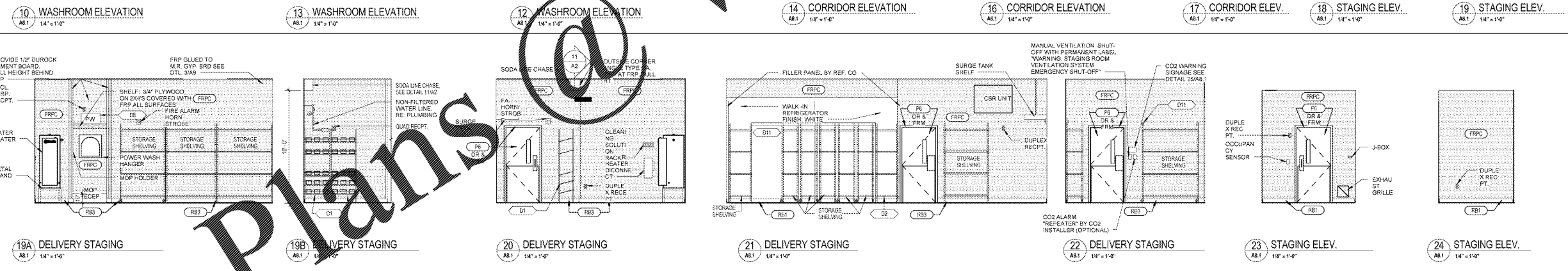
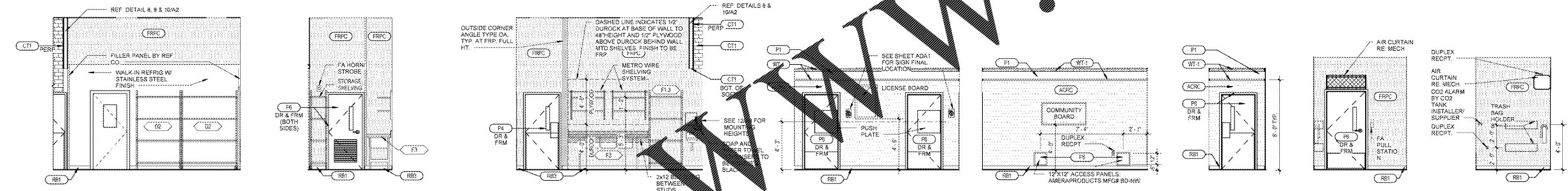
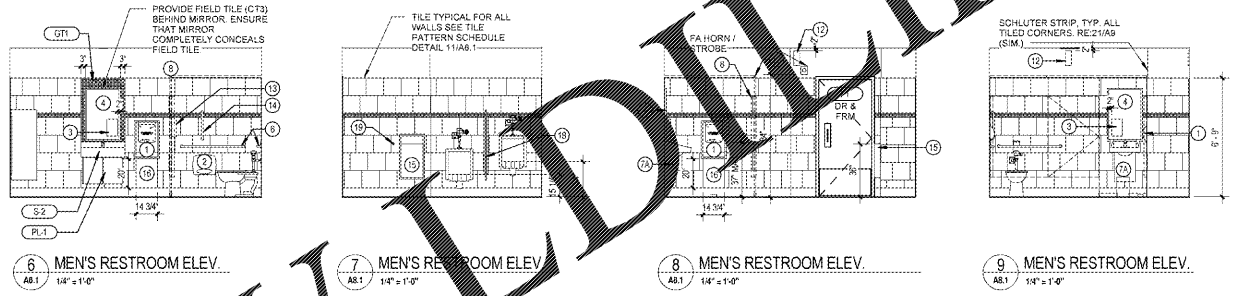
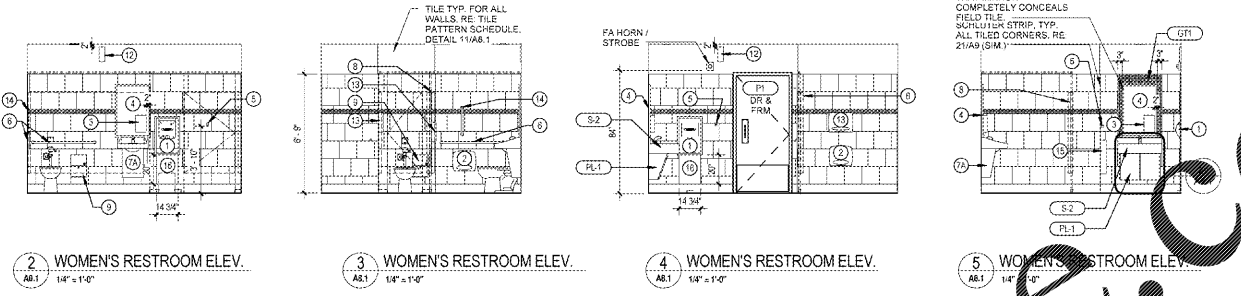
BARRIER FREE NOTES

TOILET ROOM TO COMPLY WITH ALL BARRIER FREE DESIGN REQUIREMENTS INCLUDING BUT NOT LIMITED TO:

- GRAB BARS: TOP OF GRIPPING SURFACES ON GRAB BARS WILL BE 33"-36" ABOVE FLOOR AS SPECIFIED ON SHEET ADA1.
- MIRRORS: 11/24 X 36" BOTTOM AT 40" A.F.F. MAX. AT EACH LAVATORY.
- LAVATORY: RIM HT. 34" MAX. A.F.F. BOTTOM OF APRON 2" MIN. A.F.F. LEVER HANDLES ON FAUCETS IF APPLICABLE. INSULATE HOT WATER SUPPLY AND DRAIN PIPES. ALL PIPES BELOW LAVATORIES WILL BE INSULATED OR CONFIGURED TO PROTECT AGAINST CONTACT IN ACCORDANCE TO SECTION 908.6 FBCA.
- BOANS: 36" WIDE WITH PUSH/PULL HARDWARE AND SIGNAGE.
- URNAL: MAXIMUM CLEARANCE TO RIM OF URINAL IS 17" AS SPECIFIED ON SHEET ADA1.
- WATER CLOSET: RIM TOP AT 17"-19" A.F.F. AUTOMATIC FLUSH CONTROL.
- TOILET PAPER DISPENSER: CENTERLINE OF TOILET PAPER DISPENSER WILL BE 7'-9" FROM THE FRONT OF WATER CLOSET.
- HAND TOWEL & OTHER DISPENSERS: 48" MAX HT. A.F.F. TO LINE OF OPERATION.
- N/A.

J. BARRIER-FREE: PROVIDE 32" MIN. CLEAR OPENING AND SELF-CLOSING DOORS FOR ACCESSIBLE STALLS.

SEE SHEET ADA1 FOR ACCESSIBILITY REQUIREMENTS.



LEGEND FOR PUBLIC RESTROOMS

#	ITEM	MANUFACTURER	MODEL #	REMARKS	SUPPLIED BY
1	ELECTRONIC HAND DRYER	EXCEL DRYER INC.	XLERATOR XL-C	CHROME ELECTRONIC HAND DRYER WITH RECESSED VIT	H/C
2	T.P. HOLDER	PT		7" 881 9" MAX IN FRONT OF WC. OUTLET 19" A.F.F.	H/C
3	SOAP DISPENSER	TORK	57100B BLACK	TOUCHLESS ELECTRONIC SOAP DISPENSER. BATTERY OPERATED	H/C
4	HANDROCK	BRADLEY	79A-2430	24" X 36" MIRROR WITH S.S. FRAME IN SATIN FINISH	H/C
5	COAT HOOK	BOHANNON	B-203	STAINLESS STEEL WITH SATIN FINISH MOUNT	H/C
6	GRAB BAR	BRADLEY	8720-8042E	STAINLESS STEEL WITH SATIN FINISH. BOTH END 42" ALL LENGTH	H/C
7	LAV CABINET			CABINET BELOW LAVATORY SUPPLIED AND INSTALLED BY CABINET VENDOR COORDINATED BY CC.	CABINET
7A	LAV SHAELD	TRIEBER	21914S-1	FOR AMERICAN STANDARD LUDERMIL LAVATORY	H/C
8	TOILET PARTITION	BRADLEY	BR404M-4234 CANYON GRANITE	50/100 PLASTIC PARTITIONING AND SITE LINES BY S.S. PRIMARY SLATS AND SELF-CLOSING DOORS. PROVIDE PULLS ON BOTH SIDES OF ADA STALL DOOR.	H/C
9	TRASH DISPOSAL UNIT	BRADLEY	4220-15	STAINLESS STEEL WITH SATIN FINISH. WOMEN'S ROOM ONLY.	H/C
10	WALL BRACKET	BRADLEY		MOUNT ON TOP RAIL WHERE PARTITIONS MEET WALL	H/C
11	ELECTRONIC DISPENSER	MICROBURST 6000	601375	2 UNITS PER RESTROOM. 1 NEAR DOOR AND 1 OPPOSITE. TOP 2" MIN FROM CEILING	WAWA
12	TOILET SEAT COVER DISP.			ONE PER STALL	H/C
14	18" GRAB BAR	BRADLEY	8120-0918	STAINLESS STEEL FINISH. MOUNT HORIZ. VERTICALLY.	H/C
15	WALKIE RECEPT	BRADLEY	8120-0918	RECESSED INTO WALL. 4" WALL RECESS REQUIRED. 4" PROTRUDING B/W	H/C
16	SOLID SURFACE PANEL	DUPONT CORIAN	COLOR: COTTAGE LANE	1/2" THICK, 14 3/4" WIDE X 20" HIGH PANEL MOUNTED AT A.F.F. LOCATED BELOW HAND DRYER. SEE DETAIL 31A.8.1.	CABINET
17	DOOR STOP (PARTITION)	BRADLEY		SUPPLIED BY TOILET PARTITION MANUFACTURER. LOCATE AT BOTTOM OUTSIDE CORNERS OF DOOR.	H/C
18	URNAL SCREEN	BRADLEY	18" WIDE MODEL #4 WALL MTD.		H/C
19	DOOR STOP	HABER	2266	FOR H/R ENTRY DOOR COORDINATE BY H/R H/W HARDWARE	GS
20	SOLID SURFACE COUNTERTOP	DUPONT CORIAN	COLOR: COTTAGE LANE	COUNTERTOP. BACKSPLASH AT WALLS. HIGH GLOSS FINISH	CABINET

NOTE: ALL RESTROOM ACCESSORIES INSTALLED BY GENERAL CONTRACTOR UNLESS NOTED OTHERWISE.

WARNING

CO2 WARNING SIGNAGE

NOTE: SIGNAGE SHALL COMPLY WITH NFPA 72 CHAPTER 13 REQUIREMENTS.

1925 Prospect Ave.
Orlando, FL 32814
P (407) 661-9100
F (407) 661-9101
www.cabaci.com

Cabaci & Retzlaff
Architects Engineers

CLIENT NAME
WAWA
280 WEST BALTIMORE PIKE
WAWA, PENNSYLVANIA 19063

PROJECT NAME
WAWA F85FB 2017.01 STORE #5294-CN
28508 US 19 NORTH
CLEARWATER, FL 33761

SHEET TITLE
INTERIOR ELEVATIONS

Revision Schedule

No.	Description	Date
1 <td>PRELIMINARY</td> <td>01/17/2017</td>	PRELIMINARY	01/17/2017
2 <td>FILED FOR PERMITS</td> <td>07/28/2017</td>	FILED FOR PERMITS	07/28/2017
3 <td>BID SET</td> <td>09/04/2017</td>	BID SET	09/04/2017

PROJECT NO.
DATE
PROJECT
DRAWN
CHECKED