

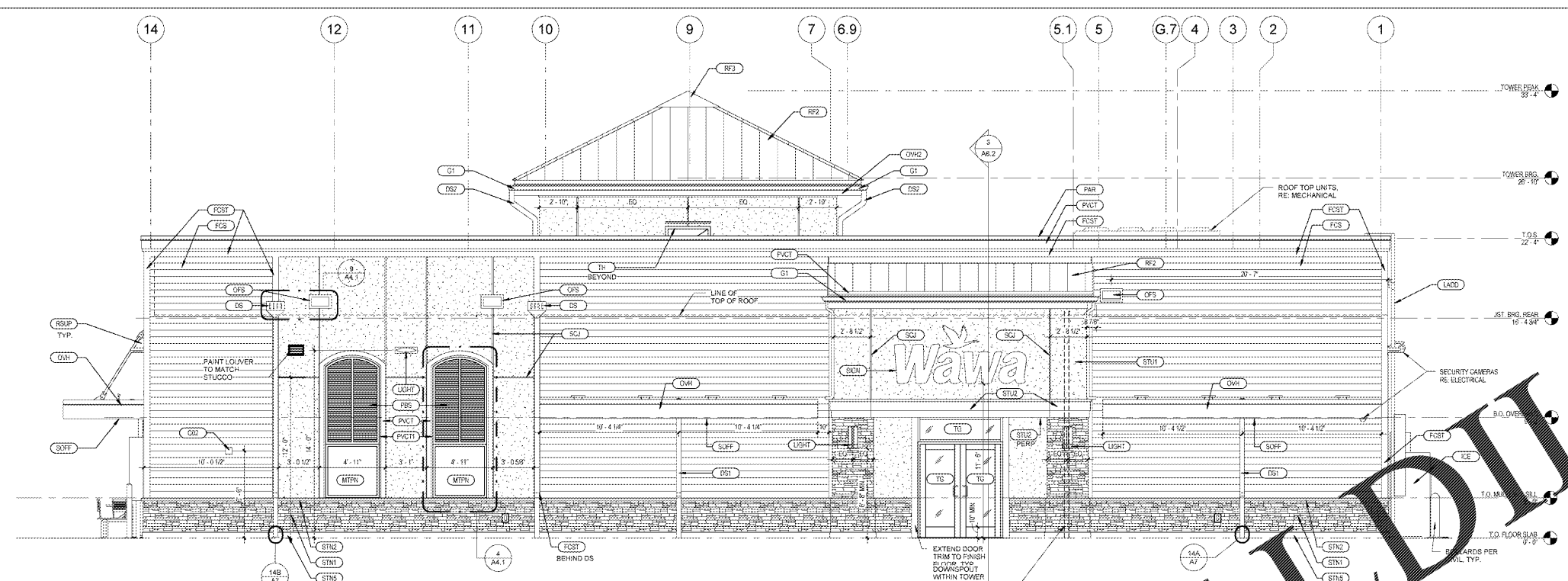
1925 Prospect Ave
Orlando, FL 32814
P (407) 661-9100
F (407) 661-9101
www.cahaci.com

Cahaci & Retzlaff
Architects Engineers

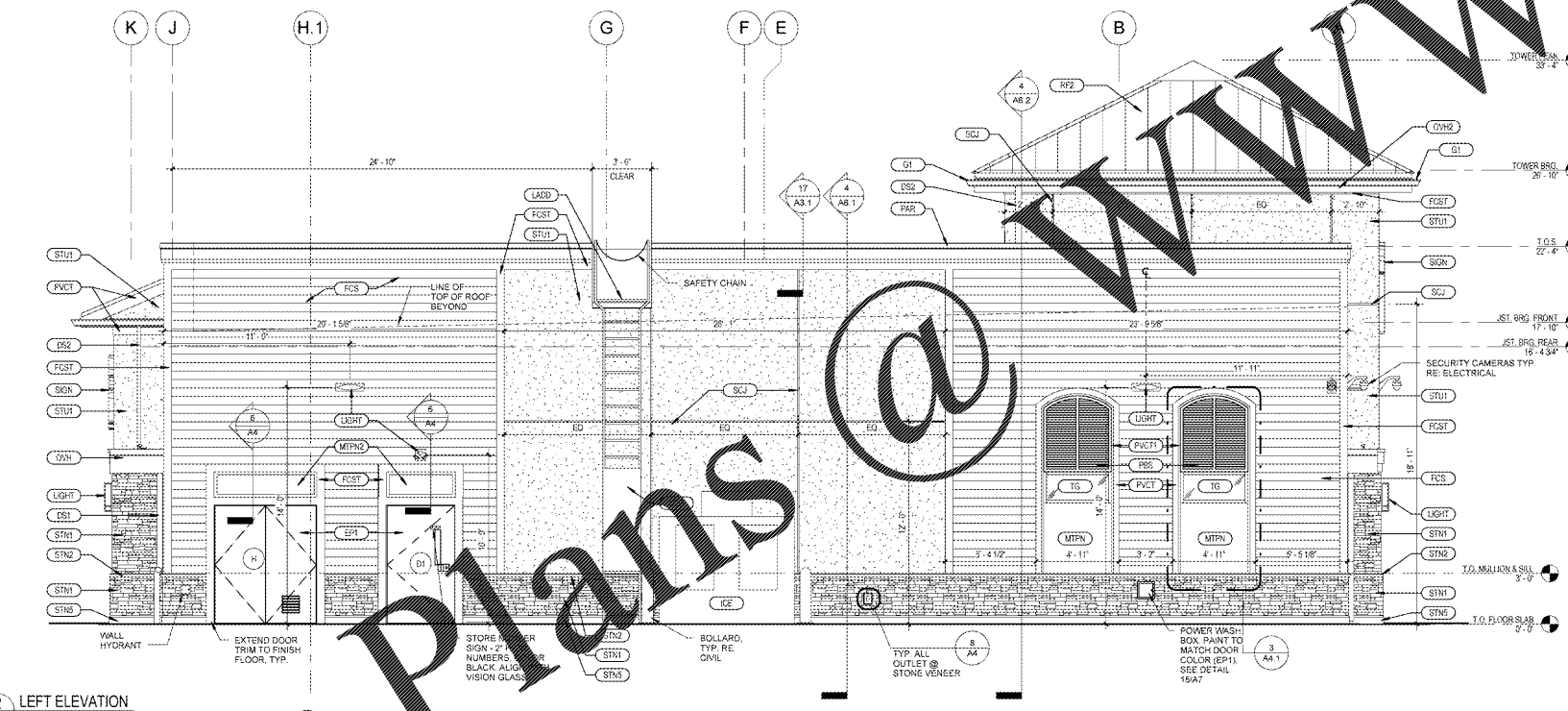
CLIENT NAME
WAWA
260 WEST BALTIMORE PIKE
WAWA, PENNSYLVANIA 19063

PROJECT NAME
WAWA F85FB 2017.01 STORE #5294-CNY
26008 US 19 NORTH
CLEARWATER, FL 33761

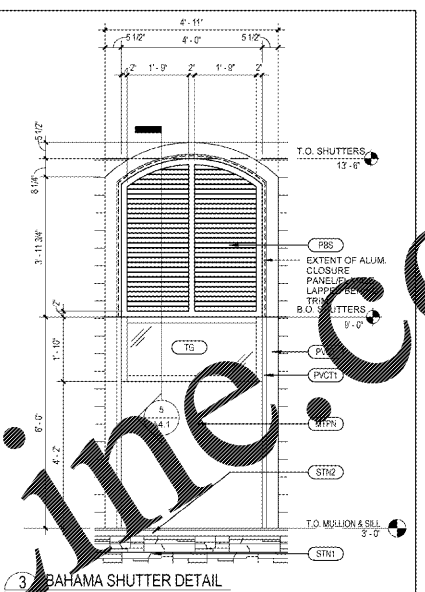
SHEET TITLE
EXTERIOR ELEVATIONS



1 REAR ELEVATION
A4.1 14' x 14'

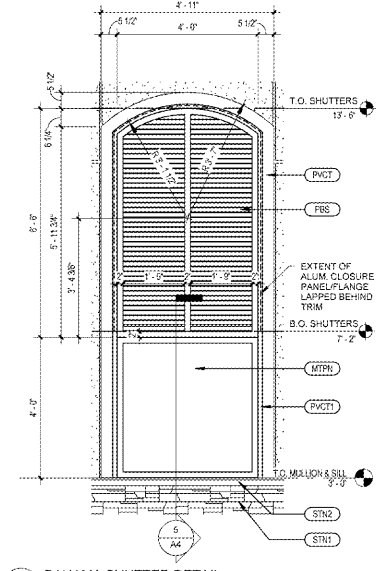


2 LEFT ELEVATION
A4.1 14' x 14'

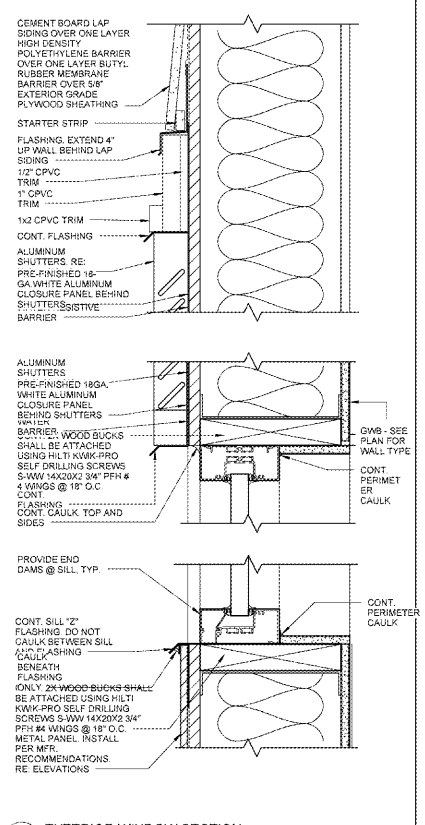


3 BAHAMA SHUTTER DETAIL
12' x 10'

NOTE: ALL SIGNAGE WILL BE PERMITTED SEPARATELY.



4 BAHAMA SHUTTER DETAIL
A4.1 12' x 10'

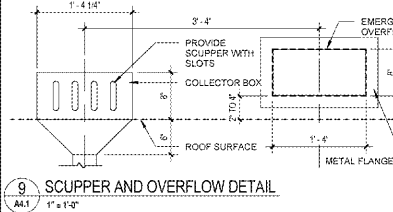


5 EXTERIOR WINDOW SECTION
A4.1 3' x 10'

GENERAL NOTES
1. ALL BLOCKING @ HARDIE FOR LIGHTS, SECURITY ITEMS. SEE DETAIL 18A7
2. MOUNT SECURITY CAMERAS THE SAME HEIGHT AS THE EXTERIOR WALL FIXTURE
3. PROVIDE 8\"/>

ARCHITECTURAL - EXTERIOR FINISH SCHEDULE				
SYMBOL	MATERIAL	MANUFACTURER	COLOR	NOTES
C02	DOX FILL BOX WITH PVC SLEEVE THRU WALL	SUPPLIER		SEE A1 FOR LOCATION AND MOUNTING DETAIL 18A7 (SM)
D0	STAINLESS STEEL TRIM BALL SCUPPER & COLLECTOR AND 4\"/>			

ARCHITECTURAL - EXTERIOR FINISH SCHEDULE				
SYMBOL	MATERIAL	MANUFACTURER	COLOR	NOTES
PAR	ALUMINUM PARAPET CAP	ATAS INTERNATIONAL INC.	COLOR TO MATCH ADJACENT TRIM	ALTERNATE: PETERSEN PAC CLAD
F08	PRE-FINISHED ALUMINUM BAHAMA SHUTTER	PIONEER ARCHITECTURAL SYSTEMS	COLOR TO MATCH ADJACENT TRIM	SHUTTER PER SPEC. CONTACT (D21) D06 6667
PVCT	ADJUST TRIM	AZEK	WHITE, FINISH: SMOOTH	PRE-FINISHED, ALTERNATE: PAINT
PVCT1	ADJUST TRIM	AZEK	1 1/2\"/>	



9 SCUPPER AND OVERFLOW DETAIL
A4.1 1' x 1'

Order Plans @ wwwledline.com

A4.1