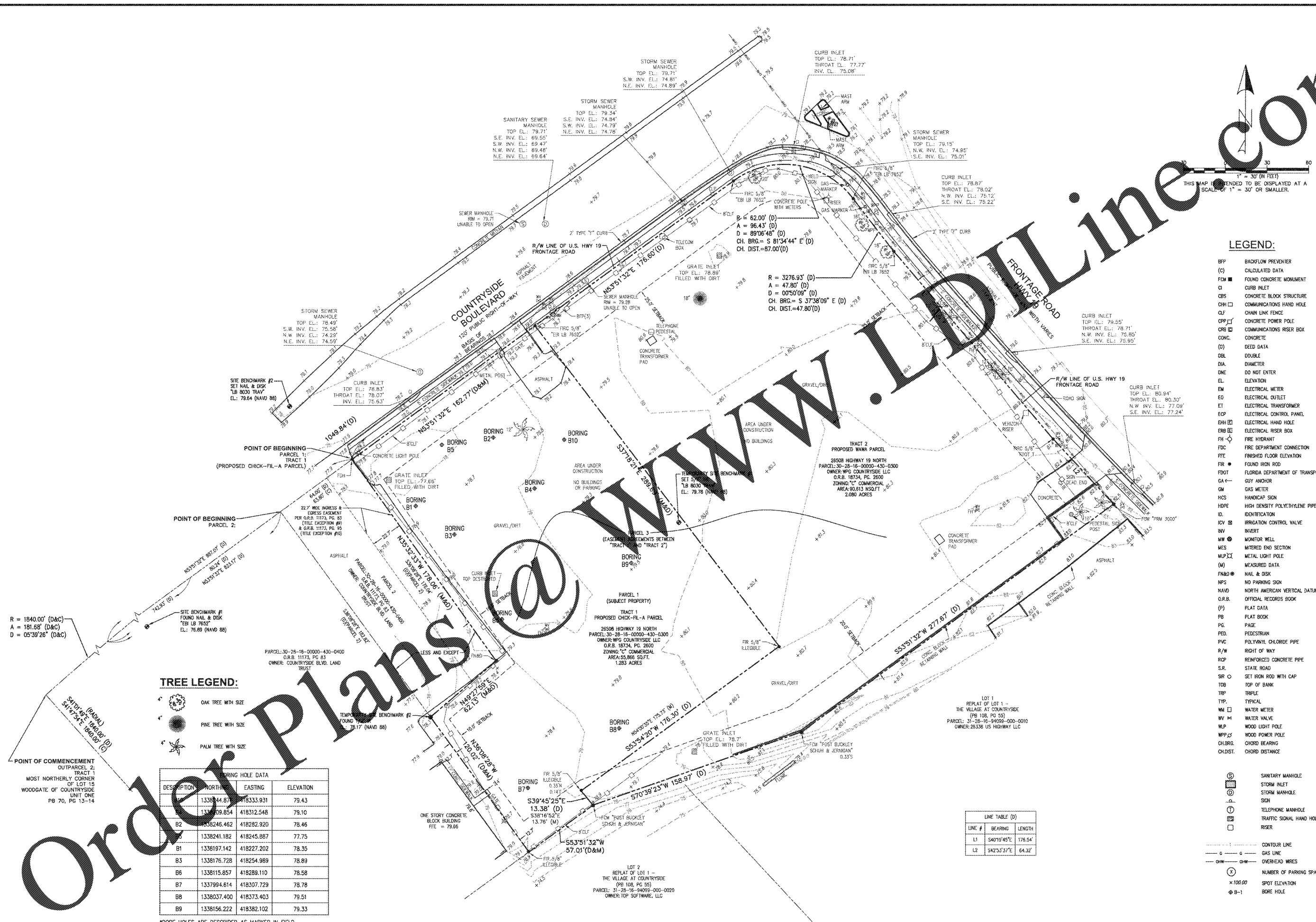


REVISIONS	
DATE	UPDATE TITLE
3/23/17	

DATE	DESCRIPTION	KS
9	PCS DRAWN	KS
	F.B.	CHKD

SCALE: 1" = 30'
 JOB No. 10014-01-059
 DATE: 1/30/2017
 FILE: 10014-01-059 CLW
 SHEET **V-2**



- LEGEND:**
- BFP BACKFLOW PREVENTER
 - (C) CALCULATED DATA
 - F.M. FOUND CONCRETE MONUMENT
 - CI CURB INLET
 - CBS CONCRETE BLOCK STRUCTURE
 - CH COMMUNICATIONS HAND HOLE
 - CLF CHAIN LINK FENCE
 - CPF CONCRETE POWER POLE
 - CRB COMMUNICATIONS RISER BOX
 - CONC. CONCRETE
 - (D) DEED DATA
 - DBL DOUBLE
 - DIAMETER
 - DNE DO NOT ENTER
 - ELEVATION
 - EM ELECTRICAL METER
 - EO ELECTRICAL OUTLET
 - ET ELECTRICAL TRANSFORMER
 - ECP ELECTRICAL CONTROL PANEL
 - EHH ELECTRICAL HAND HOLE
 - ERB ELECTRICAL RISER BOX
 - FR FIRE HYDRANT
 - FDC FIRE DEPARTMENT CONNECTION
 - FFE FINISHED FLOOR ELEVATION
 - FR FOUND IRON ROD
 - FDOT FLORIDA DEPARTMENT OF TRANSPORTATION
 - GA GUY ANCHOR
 - GM GAS METER
 - HCS HANDICAP SIGN
 - HDPE HIGH DENSITY POLYETHYLENE PIPE
 - ID IDENTIFICATION
 - ICV IRRIGATION CONTROL VALVE
 - INV INVERT
 - MW MONITOR WELL
 - MES METERED END SECTION
 - MPL METAL LIGHT POLE
 - MPLD MEASURED DATA
 - FK&D NAIL & DISK
 - NPS NO PARKING SIGN
 - NAVD NORTH AMERICAN VERTICAL DATUM
 - G.R.B. OFFICIAL RECORDS BOOK
 - (P) PLAT DATA
 - PB PLAT BOOK
 - PG. PAGE
 - PED. PEDESTRIAN
 - PVC POLYVINYL CHLORIDE PIPE
 - R/W RIGHT OF WAY
 - RCP REINFORCED CONCRETE PIPE
 - S.R. STATE ROAD
 - SIF SET IRON ROD WITH CAP
 - TDB TOP OF BANK
 - TRP TRIPLE
 - TYP. TYPICAL
 - WM WATER METER
 - WV WATER VALVE
 - WLP WOOD LIGHT POLE
 - WPP WOOD POWER POLE
 - CH.BRG. CHORD BEARING
 - CH.DIST. CHORD DISTANCE

TREE LEGEND:

- OAK TREE WITH SIZE
- PINE TREE WITH SIZE
- PALM TREE WITH SIZE

BORING HOLE DATA

DESCRIPTION	NORTHING	EASTING	ELEVATION
B1	1338144.87	418333.931	79.43
B2	1338139.854	418312.548	79.10
B3	1338246.462	418282.920	78.46
B4	1338241.182	418245.887	77.75
B5	1338197.142	418227.202	78.35
B6	1338176.728	418254.989	78.89
B7	1338115.857	418289.110	78.58
B8	1337994.614	418307.729	78.78
B9	1338037.400	418373.403	79.51
B10	1338156.222	418382.102	79.33

LINE TABLE (D)

LINE #	BEARING	LENGTH
L1	S40°19'45"E	176.54'
L2	S42°53'37"E	64.32'

*BORE HOLES ARE DESCRIBED AS MARKED IN FIELD

*ACCESS TO STORM AND SANITARY SEWER INVERT ELEVATIONS WAS NOT AVAILABLE AT THE TIME OF THIS SURVEY. STRUCTURE INVERT INFORMATION IS SHOWN HEREON PER THE ALTA/ACMS LAND TITLE SURVEY PERFORMED BY EBI SURVEYING INC, PROJECT NUMBER WAGS0002, DATED 12/19/2016.