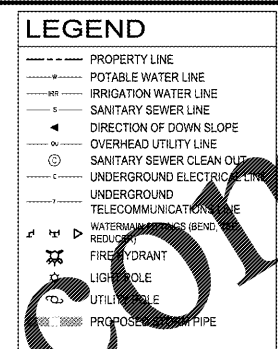
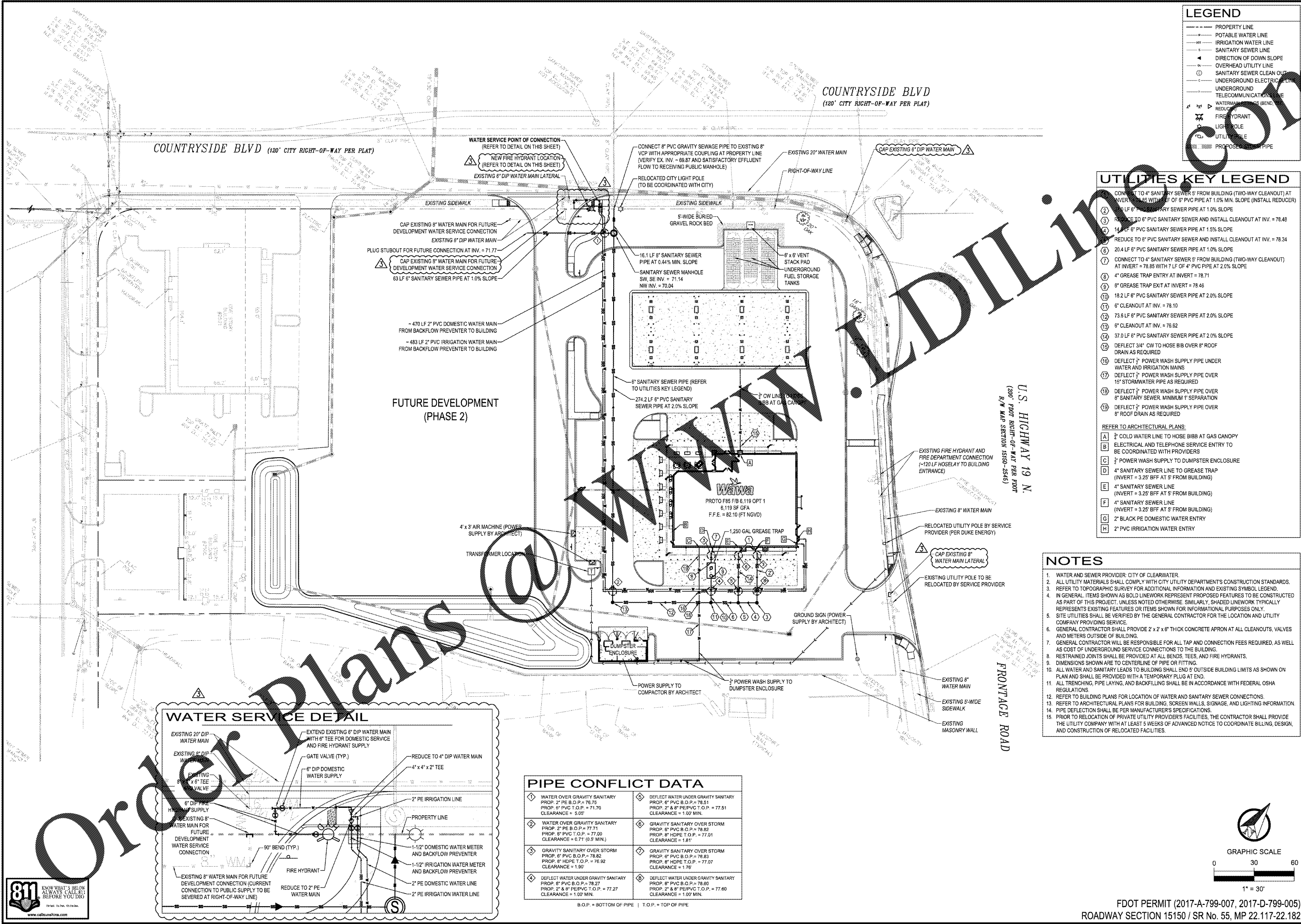


THIS DOCUMENT, TOGETHER WITH THE CONCEPTS AND DESIGN PRESENTED HEREIN, AS AN INSTRUMENT OF SERVICE, IS INTENDED ONLY FOR THE SPECIFIC PURPOSE AND CLIENT FOR WHICH IT WAS PREPARED. REUSE OF AND IMPROPER RELIANCE ON THIS DOCUMENT WITHOUT WRITTEN AUTHORIZATION AND ADAPTATION BY BOWMAN CONSULTING SHALL BE WITHOUT LIABILITY TO BOWMAN CONSULTING.



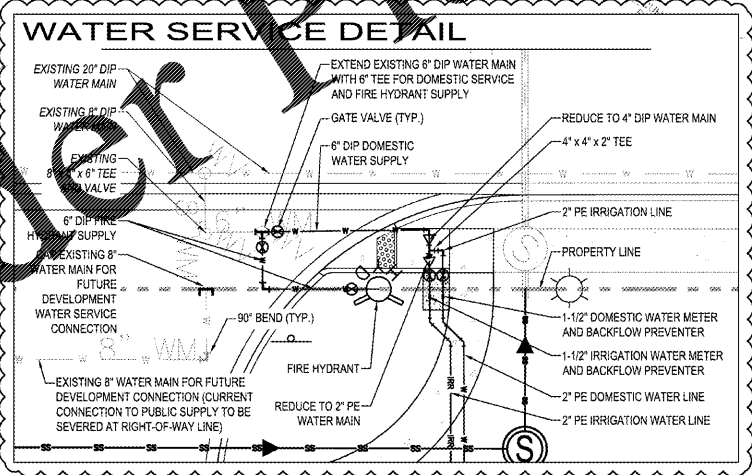
**UTILITIES KEY LEGEND**

- CONNECT TO 4" SANITARY SEWER 5' FROM BUILDING (TWO-WAY CLEANOUT) AT INVERT = 78.85 WITH 7 LF OF 4" PVC PIPE AT 1.0% MIN. SLOPE (INSTALL REDUCER)
- 10 LF 8" SANITARY SEWER PIPE AT 1.0% SLOPE
- REDUCE TO 6" PVC SANITARY SEWER AND INSTALL CLEANOUT AT INV. = 78.48
- 14 LF 6" PVC SANITARY SEWER PIPE AT 1.5% SLOPE
- REDUCE TO 6" PVC SANITARY SEWER AND INSTALL CLEANOUT AT INV. = 78.34
- 20.4 LF 6" PVC SANITARY SEWER PIPE AT 1.0% SLOPE
- CONNECT TO 4" SANITARY SEWER 5' FROM BUILDING (TWO-WAY CLEANOUT) AT INVERT = 78.85 WITH 7 LF OF 4" PVC PIPE AT 2.0% SLOPE
- 4" GREASE TRAP ENTRY AT INVERT = 78.71
- 6" GREASE TRAP EXIT AT INVERT = 78.46
- 18.2 LF 6" PVC SANITARY SEWER PIPE AT 2.0% SLOPE
- 6" CLEANOUT AT INV. = 78.10
- 73.6 LF 6" PVC SANITARY SEWER PIPE AT 2.0% SLOPE
- 6" CLEANOUT AT INV. = 76.62
- 37.0 LF 6" PVC SANITARY SEWER PIPE AT 2.0% SLOPE
- DEFLECT 3/4" CW TO HOSE BIB OVER 6" ROOF DRAIN AS REQUIRED
- DEFLECT 1/2" POWER WASH SUPPLY PIPE UNDER WATER AND IRRIGATION MAINS
- DEFLECT 1/2" POWER WASH SUPPLY PIPE OVER 15" STORMWATER PIPE AS REQUIRED
- DEFLECT 1/2" POWER WASH SUPPLY PIPE OVER 6" SANITARY SEWER, MINIMUM 1' SEPARATION
- DEFLECT 1/2" POWER WASH SUPPLY PIPE OVER 8" ROOF DRAIN AS REQUIRED

**REFER TO ARCHITECTURAL PLANS:**

- COLD WATER LINE TO HOSE BIBB AT GAS CANOPY
- ELECTRICAL AND TELEPHONE SERVICE ENTRY TO BE COORDINATED WITH PROVIDERS
- 1/2" POWER WASH SUPPLY TO DUMPSTER ENCLOSURE
- 4" SANITARY SEWER LINE TO GREASE TRAP (INVERT = 3.25' BFF AT 5' FROM BUILDING)
- 4" SANITARY SEWER LINE (INVERT = 3.25' BFF AT 5' FROM BUILDING)
- 4" SANITARY SEWER LINE (INVERT = 3.25' BFF AT 5' FROM BUILDING)
- 2" BLACK PE DOMESTIC WATER ENTRY
- 2" PVC IRRIGATION WATER ENTRY

- NOTES**
- WATER AND SEWER PROVIDER: CITY OF CLEARWATER.
  - ALL UTILITY MATERIALS SHALL COMPLY WITH CITY UTILITY DEPARTMENT'S CONSTRUCTION STANDARDS.
  - REFER TO TOPOGRAPHIC SURVEY FOR ADDITIONAL INFORMATION AND EXISTING SYMBOL LEGEND.
  - IN GENERAL, ITEMS SHOWN AS BOLD LINEWORK REPRESENT PROPOSED FEATURES TO BE CONSTRUCTED AS PART OF THIS PROJECT. UNLESS NOTED OTHERWISE, SHADED LINEWORK TYPICALLY REPRESENTS EXISTING FEATURES OR ITEMS SHOWN FOR INFORMATIONAL PURPOSES ONLY.
  - SITE UTILITIES SHALL BE VERIFIED BY THE GENERAL CONTRACTOR FOR THE LOCATION AND UTILITY COMPANY PROVIDING SERVICE.
  - GENERAL CONTRACTOR SHALL PROVIDE 2' x 2' x 6" THICK CONCRETE APRON AT ALL CLEANOUTS, VALVES AND METERS OUTSIDE OF BUILDING.
  - GENERAL CONTRACTOR WILL BE RESPONSIBLE FOR ALL TAP AND CONNECTION FEES REQUIRED, AS WELL AS COST OF UNDERGROUND SERVICE CONNECTIONS TO THE BUILDING.
  - RESTRAINED JOINTS SHALL BE PROVIDED AT ALL BENDS, TEES, AND FIRE HYDRANTS.
  - DIMENSIONS SHOWN ARE TO CENTERLINE OF PIPE OR FITTING.
  - ALL WATER AND SANITARY LEADS TO BUILDING SHALL END 5' OUTSIDE BUILDING LIMITS AS SHOWN ON PLAN AND SHALL BE PROVIDED WITH A TEMPORARY PLUG AT END.
  - ALL TRENCHING, PIPE LAYING, AND BACKFILLING SHALL BE IN ACCORDANCE WITH FEDERAL OSHA REGULATIONS.
  - REFER TO BUILDING PLANS FOR LOCATION OF WATER AND SANITARY SEWER CONNECTIONS.
  - REFER TO ARCHITECTURAL PLANS FOR BUILDING, SCREEN WALLS, SIGNAGE, AND LIGHTING INFORMATION.
  - PIPE DEFLECTION SHALL BE PER MANUFACTURER'S SPECIFICATIONS.
  - PRIOR TO RELOCATION OF PRIVATE UTILITY PROVIDER'S FACILITIES, THE CONTRACTOR SHALL PROVIDE THE UTILITY COMPANY WITH AT LEAST 5 WEEKS OF ADVANCED NOTICE TO COORDINATE BILLING, DESIGN, AND CONSTRUCTION OF RELOCATED FACILITIES.



**PIPE CONFLICT DATA**

WATER OVER GRAVITY SANITARY PROP. 2" PE B.O.P. = 76.75 PROP. 6" PVC T.O.P. = 71.70 CLEARANCE = 5.05'	DEFLECT WATER UNDER GRAVITY SANITARY PROP. 6" PVC B.O.P. = 78.51 PROP. 2" & 6" PE/PVC T.O.P. = 77.51 CLEARANCE = 1.00' MIN.
WATER OVER GRAVITY SANITARY PROP. 2" PE B.O.P. = 77.71 PROP. 6" PVC T.O.P. = 77.00 CLEARANCE = 0.71' (0.5' MIN.)	GRAVITY SANITARY OVER STORM PROP. 6" PVC B.O.P. = 78.82 PROP. 8" HDPE T.O.P. = 77.01 CLEARANCE = 1.81'
GRAVITY SANITARY OVER STORM PROP. 6" PVC B.O.P. = 78.82 PROP. 8" HDPE T.O.P. = 76.92 CLEARANCE = 1.90'	GRAVITY SANITARY OVER STORM PROP. 6" PVC B.O.P. = 78.83 PROP. 8" HDPE T.O.P. = 77.07 CLEARANCE = 1.76'
DEFLECT WATER UNDER GRAVITY SANITARY PROP. 6" PVC B.O.P. = 78.27 PROP. 2" & 6" PE/PVC T.O.P. = 77.27 CLEARANCE = 1.00' MIN.	DEFLECT WATER UNDER GRAVITY SANITARY PROP. 6" PVC B.O.P. = 78.80 PROP. 2" & 6" PE/PVC T.O.P. = 77.80 CLEARANCE = 1.00' MIN.

B.O.P. = BOTTOM OF PIPE | T.O.P. = TOP OF PIPE

**Bowman CONSULTING**  
Certificate of Authorization License No. 30482

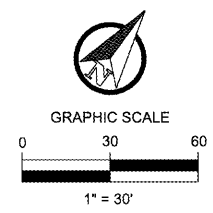
**UTILITY PLAN**  
WAWA  
COUNTRYSIDE BLVD & U.S. HWY 19  
CLEARWATER, PINELLAS COUNTY  
FLORIDA

ERIK D. JULIANO, P.E.  
LICENSE NO. 68423  
05/24/2017

PLAN STATUS

02/16/17	FOOT ACCESS REVIEW
03/09/17	CITY REVIEW
05/16/17	CITY REVIEW

DATE DESCRIPTION JIM JMD  
DESIGN DRAWN CHKD  
SCALE AS SHOWN  
JOB No. 010455-01-002  
DATE 05/24/2017  
FILE C-5.0 UP.DWG  
SHEET **C5.0**



FDOT PERMIT (2017-A-799-007, 2017-D-799-005)  
ROADWAY SECTION 15150 / SR No. 55, MP 22.117-22.182