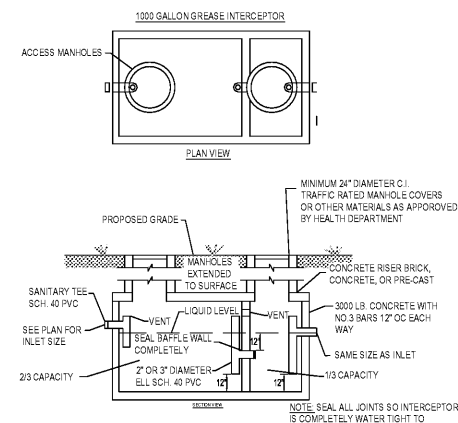


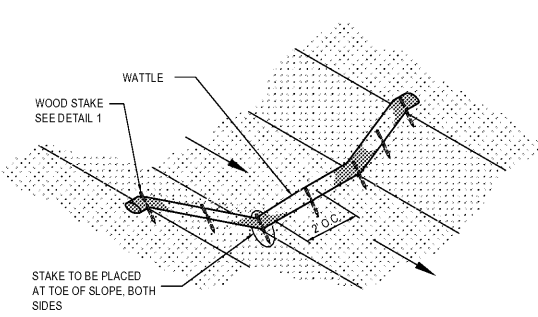
NOTE:
1. MANHOLE FRAME & COVER SHALL BE EJIW NO. 1835 OR APPROVED EQUAL

Sampling Vault
N.T.S.



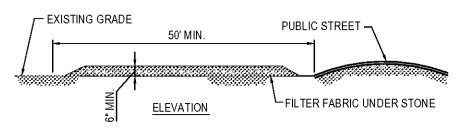
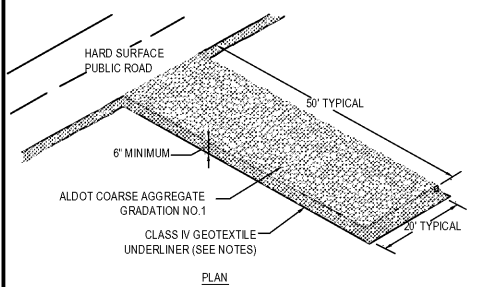
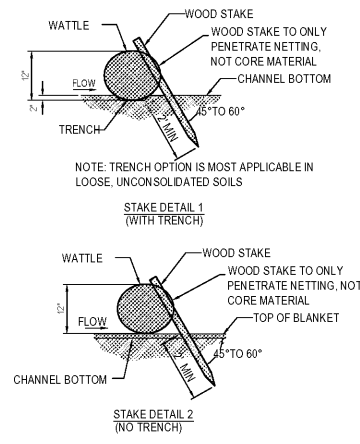
NOTE: SEAL ALL JOINTS SO INTERCEPTOR IS COMPLETELY WATER TIGHT TO INFILTRATION OR EXPIRATION.

GREASE TRAP DETAIL
N.T.S.



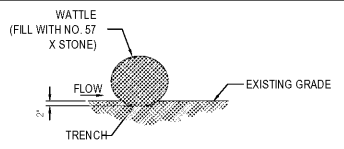
Wattle Spacing
REFER TO ALDOT SPECIAL DRAWING NO. ESC-300 FOR RECOMMENDED PLACEMENT INTERVAL BETWEEN WATTLES

CdW Wattle Check Dam
N.T.S.



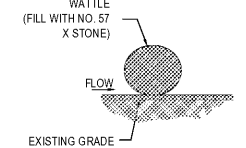
- SPECIAL NOTES:**
1. A STABILIZED PAD OF CRUSHED STONE SPREAD OVER FILTER FABRIC SHALL BE LOCATED WHERE TRAFFIC WILL BE ENTERING OR LEAVING A CONSTRUCTION SITE TO OR FROM A PUBLIC STREET. THE STONE SHALL BE ALDOT GRADATION NO. 1 STONE. FILTER FABRIC SHALL BE NONWOVEN GEOTEXTILE CLASS IV OR EQUAL. THE ENTRANCE SHALL BE MAINTAINED IN A CONDITION WHICH WILL PREVENT TRACKING OR FLOWING OF SEDIMENT ONTO PUBLIC STREETS OR EXISTING PAVEMENT. THIS MAY REQUIRE PERIODIC TOP DRESSING WITH ADDITIONAL STONE AS CONDITIONS DEMAND AND REPAIR AND/OR CLEANOUT OF ANY MEASURES USED TO TRAP SEDIMENT.
 2. ALL SEDIMENT SPILLED, DROPPED, WASHED OR TRACKED ONTO PUBLIC STREETS MUST BE REMOVED IMMEDIATELY BY STREET CLEANING (NOT FLUSHING). WHEN NECESSARY, WHEELS MUST BE CLEANED TO REMOVE SEDIMENT PRIOR TO ENTERING A PUBLIC STREET. WHEN WASHING IS REQUIRED, IT SHALL BE DONE ON AN AREA STABILIZED WITH CRUSHED STONE WHICH DRAINS INTO AN APPROVED SEDIMENT BASIN.
 3. IF THE PAD SLOPE TOWARDS THE ROAD EXCEEDS 2%, A DIVERSION RIDGE 6" - 8" HIGH WITH 3:1 SIDE SLOPES MUST BE CONSTRUCTED ACROSS THE FOUNDATION APPROXIMATELY 15' AWAY FROM THE ROAD AND DRAIN INTO A SEDIMENT TRAP OR BASIN.

CEP Construction Exit Pad
N.T.S.



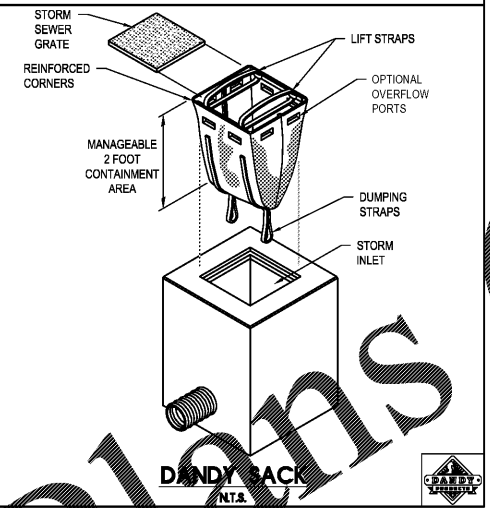
NOTE: TRENCH OPTION IS MOST APPLICABLE IN LOOSE, UNCONSOLIDATED SOILS

DETAIL 1 (WITH TRENCH)



DETAIL 2 (NO TRENCH)

Gr Gravel Sock
N.T.S.



DANDY BACK
N.T.S.



WWW.LDILine.com

LBYD ENGINEERS
Birmingham, Alabama
Huntsville, Alabama
Anniston, Alabama
Tomball, Florida
www.lbyd.com

LBYD, Inc.
Civil and Structural Engineers
716 South 30th Street
Birmingham, AL 35233
Phone (205) 251-4500
Structural Fax (205) 324-4181
Civil Fax (205) 488-0226

© copyright 2017
These drawings and design intent are the work property of LBYD Inc. which may not be reproduced without written permission.

LBYD Project Number
102-17-079

ALABAMA LICENSED PROFESSIONAL ENGINEER
No. 30400
AMAR BUTCHER
2018

Date	Revision

Buffalo Wild Wings
Realty Link
1416 4th Avenue South, Birmingham, AL

Sheet Title
CIVIL DETAILS

Date
2-9-2018

Checked By: BLH
Drawn By: MTH

Sheet Number: C6.1
Sequence: 6
Total: 9

Order Plans