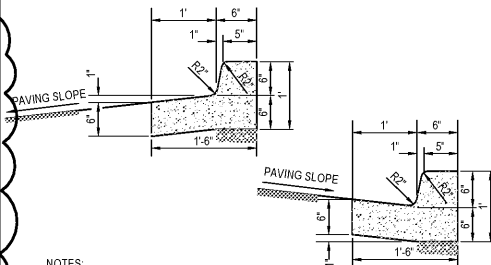


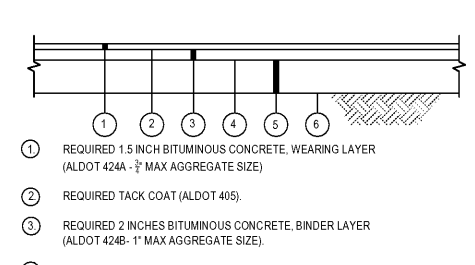
Typical Cleanout Detail

N.T.S.



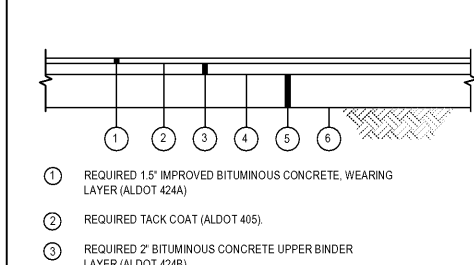
18" Curb & Gutter

N.T.S.



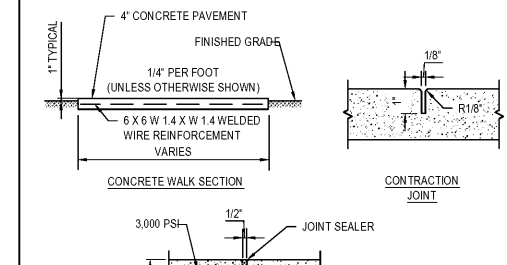
Standard Duty Asphalt Paving

N.T.S.



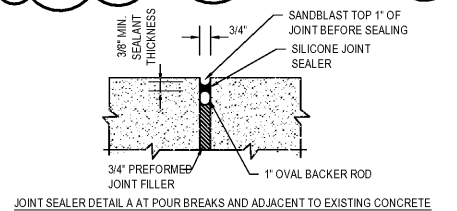
Heavy Duty Asphalt Paving Section

N.T.S.

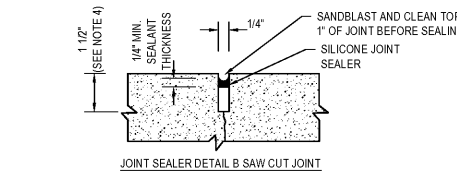


Typical Sidewalk Detail

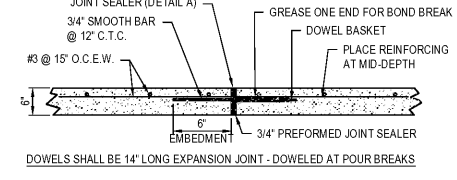
N.T.S.



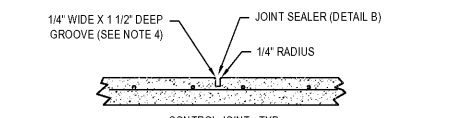
JOINT SEALER DETAIL A AT POUR BREAKS AND ADJACENT TO EXISTING CONCRETE



JOINT SEALER DETAIL B SAW CUT JOINT



JOINT SEALER (DETAIL A) 3/4" SMOOTH BAR @ 12" C.T.C.

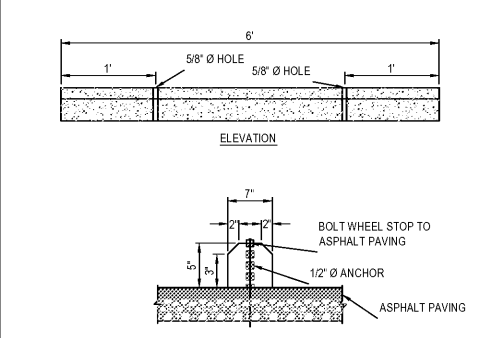


CONTROL JOINT - TYP.

- NOTES:
- CONTRACTOR SHALL INSTALL 4" OF CRUSHED AGGREGATE BASE COURSE, TYPE B (ALDOT 825) UNDER ALL CONCRETE PAVING.
 - CONCRETE SHALL HAVE 4000 PSI AT 28 DAYS.
 - CONTRACTOR SHALL INSTALL CONTROL JOINTS IN CONCRETE PAVING AT 12' MAX SPACING BOTH WAYS. COORDINATE WITH ARCHITECTURAL PLANS FOR SCORING PATTERN.
 - CONTROL JOINT TO BE 1/4" OF THE SLAB THICKNESS TYPICALLY.
 - EXPANSION JOINTS AT POUR BREAKS AND 100' MAX SPACING. COORDINATE WITH CONTROL JOINTS.
 - IN LIEU OF REINFORCEMENT SHOWN, CONTRACTOR MAY USE 4x4 W2.9W2.9 WELDED WIRE FABRIC.
 - IF DRY-CUTTING OF CONTROL JOINTS IS USED, AN ABRASIVE BLADE MAY BE USED IN LIEU OF SANDBLASTING.

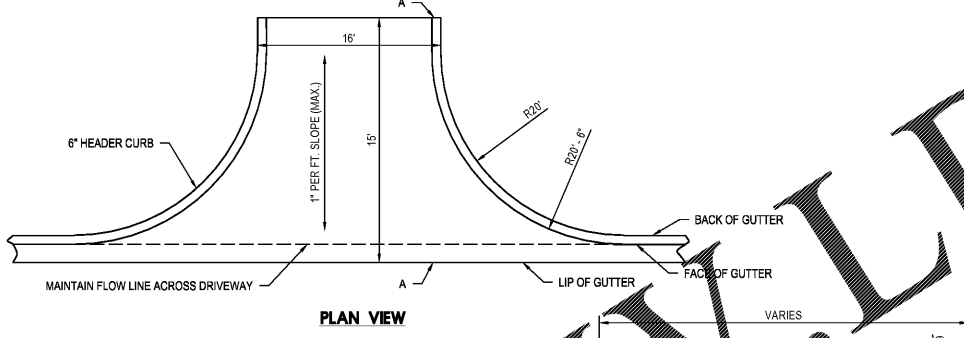
CONCRETE PAVING DETAIL (DUMPSTER AREA)

N.T.S.



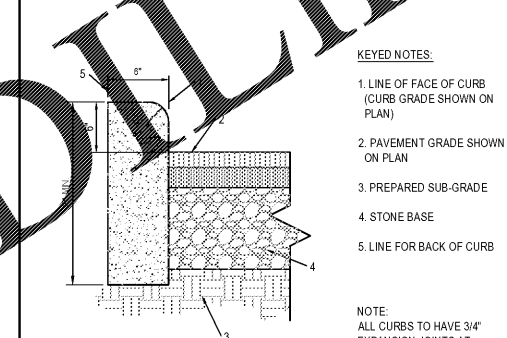
Concrete Wheel Stop

N.T.S.



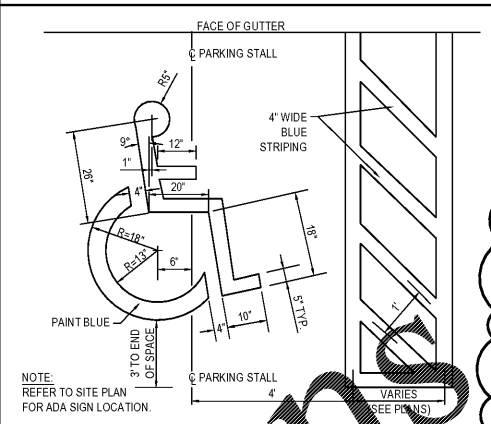
Typical Concrete Driveway Plan

N.T.S.



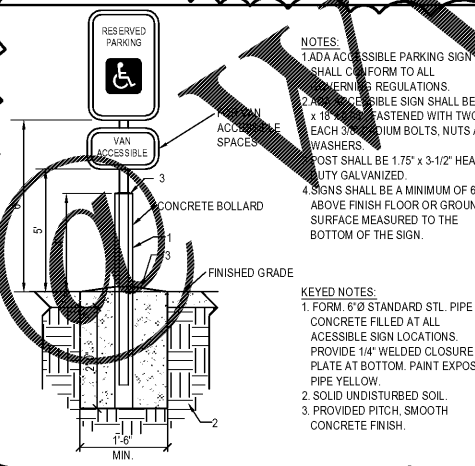
6" Header Curb

N.T.S.



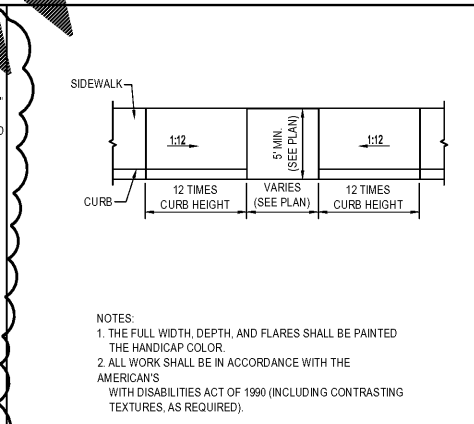
ADA Accessible Symbol and Striping

N.T.S.



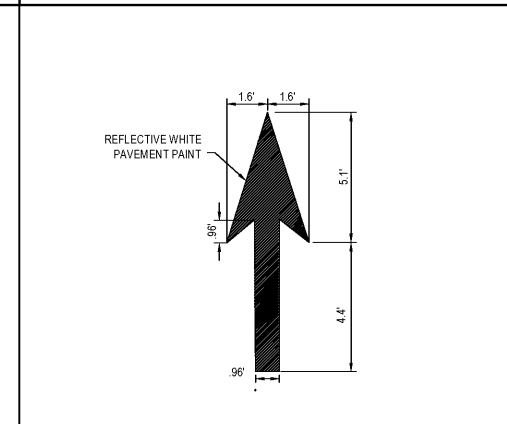
Bollard Mounted ADA Accessible Sign

N.T.S.



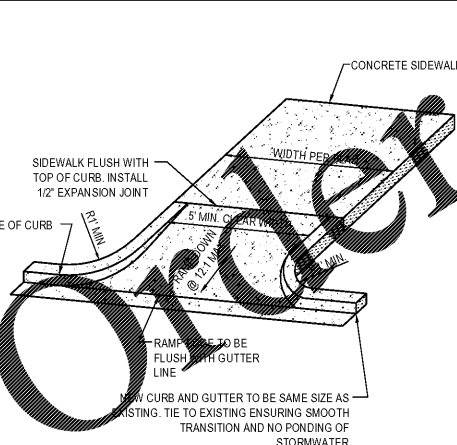
ADA Inline Curb Ramp

N.T.S.



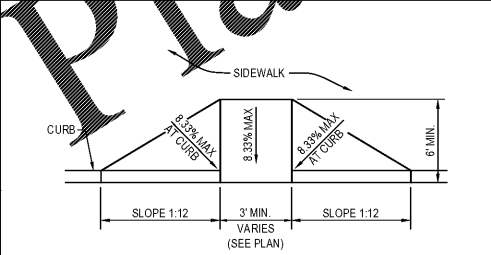
Painted Straight Arrow

N.T.S.



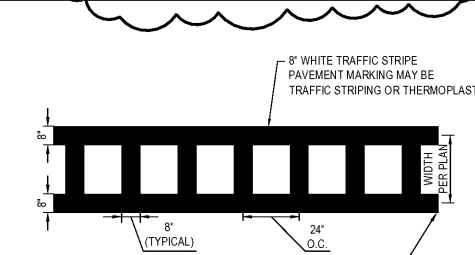
ADA Curb Return Ramp

N.T.S.



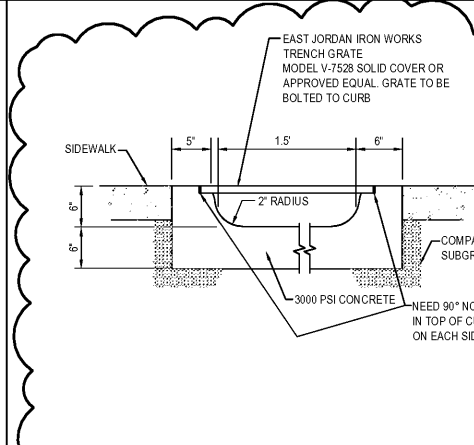
ADA Flared Ramp

N.T.S.



Pedestrian Crosswalk

N.T.S.



Sidewalk Chase Detail

N.T.S.

LBYD ENGINEERS
 Birmingham, Alabama
 Huntsville, Alabama
 Atlanta, Georgia
 Tallahassee, Florida
 www.lbyd.com

LBYD, Inc.
 Civil and Structural Engineers
 716 South 30th Street
 Birmingham, AL 35233
 Phone (205) 251-4500
 Structural Fax (205) 324-4181
 Civil Fax (205) 488-0226

© copyright 2017
 These drawings and design intent are the work property of LBYD Inc. which may not be reproduced without written permission.

LBYD Project Number
 102-17-079

ALABAMA LICENSED PROFESSIONAL ENGINEER
 No. 30400
 Brian Amar
 12/17/2018

Date	Revision

Buffalo Wild Wings
 Realty Link
 1416 4th Avenue South, Birmingham, AL

Sheet Title
 CIVIL DETAILS

Date
 2-9-2018

Checked By
 BLH

Sheet Number
 C6.0

Sequence
 7
 Total
 9