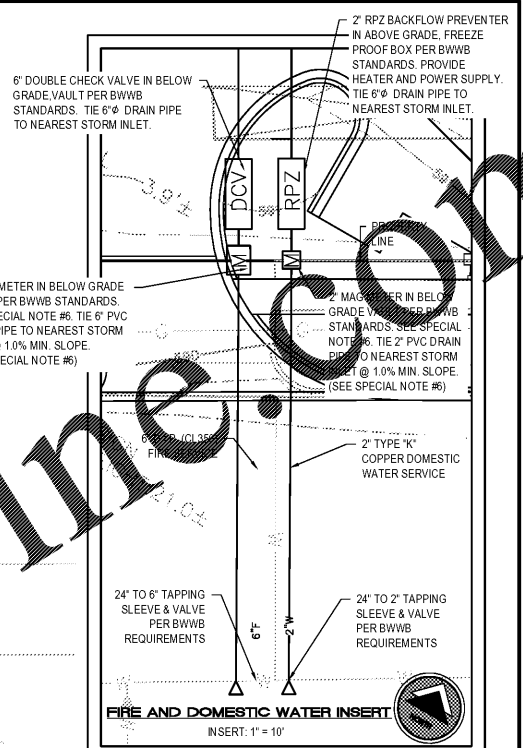


UTILITY NOTES:

1. LBYD, INC. SHALL NOT HAVE AUTHORITY OVER THE SITE OR BUILDING CONTRACTOR'S WORK OR RESPONSIBILITIES. LBYD IS NOT RESPONSIBLE FOR SITE SAFETY PROCEDURES OR METHODS OF CONSTRUCTION.
2. ALL EXISTING UTILITIES SHOWN ON THESE DRAWINGS ARE APPROXIMATE AND OTHER UTILITIES MAY EXIST. CONTRACTOR MUST HAVE EXISTING UTILITIES LOCATED BY UNDERGROUND LINE LOCATORS AS WELL AS FIELD VERIFIED BY ON-SITE PERSONNEL PRIOR TO ORDERING MATERIALS OR BEGINNING CONSTRUCTION. ANY DISCREPANCIES SHALL BE REPORTED TO LBYD IMMEDIATELY.
3. EXISTING UTILITIES TO REMAIN MAY BE LOCATED WITHIN PROPOSED DEMOLITION AREAS. CONTRACTOR SHALL USE EXTREME CAUTION WHILE WORKING IN THESE AREAS TO ENSURE NO UTILITY SERVICE INTERRUPTIONS TO FACILITIES THAT REMAIN OR TO ADJACENT PROPERTIES.
4. ALL EXISTING IMPROVEMENTS WITHIN THE LIMITS OF CONSTRUCTION ARE TO BE REMOVED UNLESS SPECIFICALLY NOTED "TO REMAIN".
5. THE CONTRACTOR SHALL TAKE ALL NECESSARY MEASURES TO PROTECT ADJACENT PROPERTIES AND IS RESPONSIBLE FOR ANY DAMAGE TO EXISTING IMPROVEMENTS ON OR OFF SITE DUE TO THE CONSTRUCTION OF THIS PROJECT. ANY DAMAGE WILL BE REPAIRED AT THE CONTRACTOR'S EXPENSE.
6. CONTRACTOR SHALL VERIFY SITE BOUNDARY AND EXISTING TOPOGRAPHY. NOTIFY LBYD OF ANY DISCREPANCIES PRIOR TO SUBMITTING PRICES OR ORDERING MATERIALS.
7. IT IS THE CONTRACTOR'S RESPONSIBILITY TO PROTECT ALL BENCHMARKS AND PROPERTY CORNERS. ANY REPLACEMENT WILL BE AT THE CONTRACTOR'S EXPENSE.
8. IT IS THE RESPONSIBILITY OF THE CONTRACTOR TO OBTAIN ALL NECESSARY PERMITS REQUIRED TO CONSTRUCT THIS PROJECT AND PAY ALL PERMIT FEES. ALL PERMITS MUST BE IN-HAND PRIOR TO CONSTRUCTION.
9. BOUNDARY AND TOPOGRAPHIC INFORMATION PROVIDED BY THE OWNER AND PERFORMED BY GONZALEZ-STRENGTH & ASSOCIATES, INC.
10. TOPOGRAPHIC INFORMATION WAS PERFORMED VIA GROUND RUN FORMAT.
11. CONTRACTOR TO COORDINATE WITH OWNER PRIOR TO ANY DEMOLITION REGARDING ITEMS TO BE SALVAGED, RECYCLED, AND REUSED. CONTRACTOR SHALL REMOVE ITEMS TO BE SALVAGED WITH EXTREME CAUTION TO PREVENT DAMAGE. CONTRACTOR SHALL TURN ALL SALVAGED ITEMS OVER TO OWNER.

12. THE SITE CONTRACTOR IS RESPONSIBLE FOR COMPLETING ALL UTILITY SERVICES (WATER, SEWER, GAS, ELECTRICAL, TELEPHONE, CABLE TV) FROM THE POINT THE RESPECTIVE UTILITY COMPANY COMPLETES THEIR WORK TO THE POINT OF CONNECTION AT THE BUILDING.
13. REFER TO ARCHITECTURAL, MECHANICAL, PLUMBING, ELECTRICAL, ETC. PLANS FOR ALL PROPOSED UTILITY POINTS OF CONNECTION AT THE BUILDING. NOTIFY ARCHITECT AND LBYD OF ANY DISCREPANCIES.
14. GRAVITY SEWER SYSTEMS SHALL BE CONSTRUCTED FROM DOWNSTREAM TO UPSTREAM. VERIFY ALL PIPE SLOPES, INVERTS, AND POINTS OF CONNECTION PRIOR TO CONSTRUCTION. NOTIFY LBYD OF ANY DISCREPANCIES.
15. THE CONTRACTOR SHALL VERIFY ALL EXISTING AND PROPOSED GRAVITY SEWER PIPE GRADES AND POINTS OF CONNECTION PRIOR TO INSTALLATION. LBYD SHALL BE NOTIFIED OF ANY DEVIATIONS PRIOR TO CONSTRUCTION.
16. BACKFLOW PREVENTION AND METERING SHALL BE PROVIDED ON THE FIRE, DOMESTIC, AND IRRIGATION SERVICES IN ACCORDANCE WITH THE LOCAL UTILITY COMPANY AND FIRE DEPARTMENT'S REQUIREMENTS. BACKFLOW PREVENTION FOR THE DOMESTIC AND IRRIGATION SYSTEMS SHALL BE A REDUCED PRESSURE PRINCIPAL (RPZ) INSTALLED IN ABOVE GROUND BOXES. THE FIRE SERVICE SHALL HAVE DOUBLE CHECK VALVES IN A BELOW GRADE BOX.
17. WATER MAINS 4 INCHES IN DIAMETER AND GREATER SHALL BE PVC C900 (CL 200 DR-14) AND WATER MAINS LESS THAN 3 INCHES IN DIAMETER SHALL BE PVC (SCHD 40) UNLESS OTHERWISE INDICATED ON THE PLANS.
18. WATER MAINS AND SERVICES SHALL BE A MINIMUM OF 10 FEET HORIZONTAL AND 2 FEET VERTICAL FROM ALL SANITARY SEWER MAINS AND LATERALS.
19. WATER MAINS AND SERVICES SHALL BE INSTALLED IN ACCORDANCE WITH THE LOCAL UTILITY COMPANY'S REQUIREMENTS. ALL MAINS AND SERVICES SHALL BE INSTALLED WITH A MINIMUM OF 36" COVER UNLESS OTHERWISE INDICATED ON PLANS.
20. ALL SANITARY SEWER MAINS AND LATERALS SHALL BE PVC C900 UNLESS OTHERWISE REQUIRED BY THE LOCAL UTILITY COMPANY.
21. ALL UNDERGROUND ELECTRICAL, TELEPHONE, AND CABLE TV SHALL BE INSTALLED IN PVC CONDUIT OR CONCRETE ENCASED DUCT BANK WITH PULL WIRE MEETING THE LOCAL UTILITY COMPANY'S REQUIREMENTS. REFER TO ELECTRICAL PLANS FOR SPECIFIC INFORMATION.
22. GAS SERVICE SHALL BE PER THE LOCAL UTILITY COMPANY'S REQUIREMENTS. INFORMATION SHOWN ON CIVIL DRAWINGS FOR REFERENCE ONLY. COORDINATE WITH MECHANICAL ENGINEER AND UTILITY COMPANY.
23. UTILITY TRENCHES SHALL BE BACKFILLED WITH COMPACTED FILL PLACED IN 6 INCH LOOSE LIFTS. FILL SHALL BE COMPACTED TO 98% STANDARD PROCTOR AND OPTIMUM MOISTURE CONTENT WITHIN ±2.0%.
24. WHEN INSTALLING UTILITIES IN EXISTING PAVED AREAS OR IN AREAS WHERE SOILS ARE CONSIDERED UNSUITABLE FOR BEDDING OR BACKFILLING, UTILITY TRENCHES SHALL BE BACKFILLED FULL DEPTH WITH CRUSHED AGGREGATE.

25. WHERE UTILITIES ARE TO BE INSTALLED IN AREAS OF EXISTING (PAVING, HARDSCAPE, SIDEWALKS, ETC.) CONTRACTOR SHALL SAWCUT AND REMOVE EXISTING (PAVING, HARDSCAPE, SIDEWALK ETC.) AND REPLACE IN LIKE KIND AND RESTRIPE AS NECESSARY. BACKFILL TRENCH FULL DEPTH WITH STONE.
26. CONTRACTOR IS RESPONSIBLE FOR ADJUSTING ELEVATIONS OF ALL AT-GRADE STRUCTURES AND UTILITIES TO REMAIN (VALVE BOXES, MANHOLES, INLETS, VAULTS, ETC.) TO MATCH PROPOSED FINISHED GRADES.
27. CONTRACTOR IS RESPONSIBLE FOR PROVIDING TAMPER SWITCHES AND ASSOCIATED CONDUIT, WIRING, ETC ON FIRE SERVICE POST INDICATOR VALVES AND VALVES IN PIT MOUNTED FIRE BACKFLOW PREVENTOR ASSEMBLIES. COORDINATE WITH FIRE PROTECTION AND ELECTRICAL PLANS.
28. PROVIDE 4" PVC SCHEDULE 40, 4" DIP CL 350 GRAVITY DRAIN LINE FROM ALL BELOW GRADE UTILITY VAULTS TO THE NEAREST STORM DRAINAGE INLET OR DAYLIGHT AT GRADE.



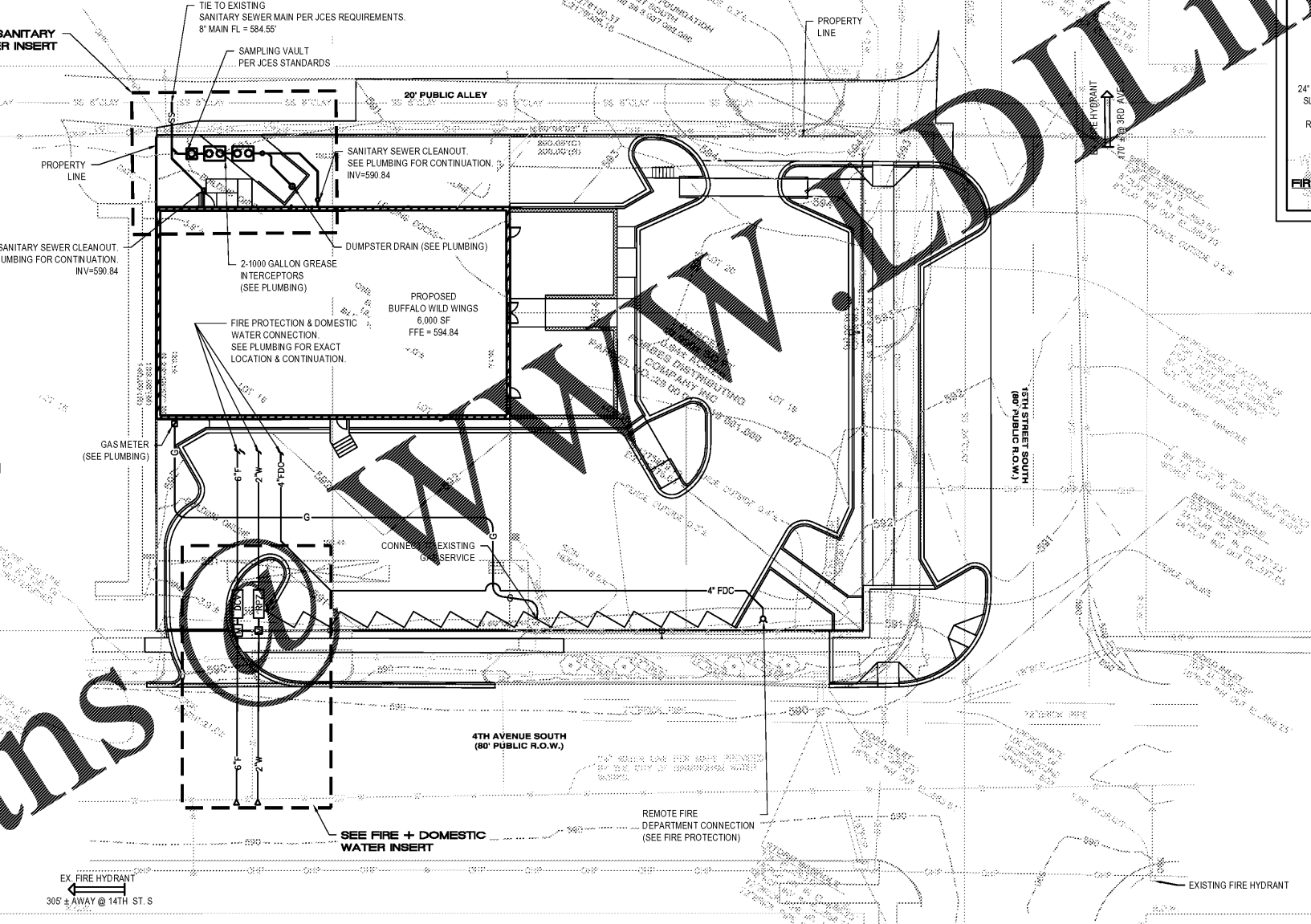
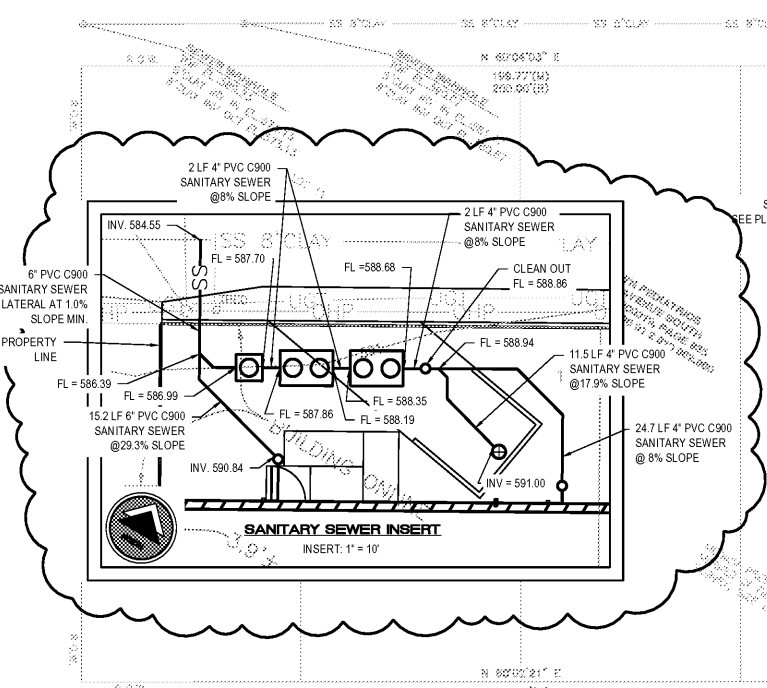
LBYD ENGINEERS
 Birmingham, Alabama
 Huntsville, Alabama
 Tallahassee, Florida
 www.lbyd.com

LBYD, Inc.
 Civil and Structural Engineers
 716 South 30th Street
 Birmingham, AL 35233
 Phone (205) 251-4500
 Structural Fax (205) 324-4181
 Civil Fax (205) 488-0226

© copyright 2017
 These drawings and design intent are the work property of LBYD Inc. which may not be reproduced without written permission.

LBYD Project Number
 102-17-079

ALABAMA LICENSED PROFESSIONAL ENGINEER
 B. HATCHER
 30400
 2/9/2018



WATER FLOW REQUIREMENTS:
 FIRE DEPARTMENT DEMAND:
 1850 GPM @ 20 PSI FOR 2 HOURS

DOMESTIC DEMAND:
 BUILDING #1 - 70 GPM

SPRINKLER DEMAND:
 BUILDING #1 - 750 GPM @ 72 PSI

SECTION INFORMATION
 SW 1/4 OF SW 1/4, SEC. 36, TOWNSHIP 17S, RANGE 5W AND
 NW 1/4 OF NW 1/4, SEC. 1, TOWNSHIP 18S, RANGE 5W

SITE UTILITY LEGEND

- SANITARY SEWER
- CO SANITARY CLEANOUT
- SS — SANITARY SEWER MAIN
- - - 6" - - - SANITARY SEWER LATERAL
- 4" F — FIRE WATER SERVICE
- 2" W — DOMESTIC WATER SERVICE
- 1" W — IRRIGATION WATER SERVICE
- ▲ TB THRUST BLOCK
- ⊕ FH FIRE HYDRANT
- ⊥ FDC FIRE DEPT. CONNECTION
- ⊕ GV GATE VALVE
- PIV POST INDICATOR VALVE ASSEMBLY

BWWB SPECIAL NOTES:

1. DOMESTIC SERVICE AND/OR FIRE SERVICE BACKFLOW PREVENTER ASSEMBLY MUST BE INSTALLED OUTSIDE THE FACILITY. THE BACKFLOW DEPARTMENT WILL REVIEW AND EVALUATE SPECIAL CONDITIONS ON A CASE BY CASE BASIS.
2. ALL SERVICES TO BE TERMINATED AT THE WATER MAIN MUST BE KILLED SIMULTANEOUSLY WITH THE INSTALLATION OF ANY NEW SERVICE CONNECTIONS BY THE WATER BOARD.
3. THE DOMESTIC SERVICE AND/OR FIRE SERVICE BACKFLOW PREVENTER ASSEMBLY MUST NOT BE INSTALLED UNTIL THE MAGNETIC FLOW METER ASSEMBLY INSTALLATION IS COMPLETE. THE DOMESTIC SERVICE MAGNETIC FLOW METER ASSEMBLY IS INSTALLED BY THE WATER BOARD, WHILE THE FIRE SERVICE MAGNETIC FLOW METER ASSEMBLY IS INSTALLED BY A WATER BOARD APPROVED CONTRACTOR. THE CUSTOMER WILL BE REQUIRED TO REMOVE ANY BACKFLOW PREVENTER ASSEMBLY IN CONFLICT WITH THE INSTALLATION OF A MAGNETIC FLOW METER ASSEMBLY (NO EXCEPTIONS). ANY COST ASSOCIATED WITH THE REMOVAL AND REINSTALLATION OF A BACKFLOW PREVENTER ASSEMBLY WILL BE INCURRED BY THE CUSTOMER AND NOT THE WATER BOARD.
4. BWWB WILL NOT MAKE ANY FIELD CHANGES ONCE THE DRAWINGS HAS BEEN APPROVED BY BWWB PERSONNEL. IF A FIELD CHANGE IS REQUIRED, YOU MUST SUBMIT A NEW DRAWING TO THE APPROPRIATE PROJECT COORDINATOR IN SYSTEM DEVELOPMENT VIA EMAIL AND RESCHEDULE YOUR TAP. NO EXCEPTIONS.

SPECIAL NOTES:

1. CONTRACTOR SHALL COORDINATE REMOVAL OF ANY POWER AND TELECOMMUNICATIONS LINES WITH LOCAL AUTHORITY AND NOTIFY ANY AFFECTED ADJACENT PROPERTY OWNERS OF UTILITY OUTAGES AT A MINIMUM OF 24 HOURS PRIOR TO COMMENCING CONSTRUCTION.
2. COORDINATE LIGHT POLE, LANDSCAPE LIGHTING, LANDSCAPE IRRIGATION, ETC. WITH LANDSCAPE AND ELECTRICAL PLANS.
3. DOMESTIC WATER METER VAULT SHALL HAVE 2" PVC (SCHD 40) DRAIN ROUTED TO NEAREST STORM STRUCTURE.
4. COORDINATE ANY DEMOLITION AND PAVEMENT CUT AND REPLACEMENT WITH LAYOUT AND GRADING PLANS.
5. SEE SHEETS C1.0 FOR DEMOLITION PLAN.
6. WATER MAG METER SHALL BE PER BIRMINGHAM WATER WORKS BOARD STANDARDS. CONTRACTOR SHALL PROVIDE POWER SERVICE (120V SINGLE PHASE, 15 AMP, GROUND FAULT INTERRUPT, AND DISCONNECT) PER NATIONAL ELECTRIC CODE STANDARDS AT THE VAULT LOCATION PRIOR TO DISTRIBUTION MAIN TAP.
7. SEE ELECTRICAL PLANS FOR ALL SITE ELECTRICAL ROUTING.
8. ALL PVC WATER LINES SHALL BE RESTRAINED JOINT AT ALL BENDS, TEES, AND CONNECTIONS. SEE DETAIL. REFER TO SITE ELECTRICAL PLANS FOR ALL SITE LIGHTING, TRANSFORMERS, TELEPHONE/COMMUNICATIONS, AND CABLE TV ROUTINGS.

PROJECT CONTACTS

OWNER:
 REALTYLINK-ALABAMA, LLC
 4209 AUTUMN LANE
 BIRMINGHAM, AL 35243
 PHONE: (205) 332-3433
 CONTACT: JOHN WHITSON

ENGINEER:
 LBYD INC.
 716 SOUTH 30TH ST.
 BIRMINGHAM, AL 35243
 PHONE: (205) 251-4500
 CONTACT: BRIAN HATCHER, P.E.

SURVEYOR:
 GONZALEZ - STRENGTH & ASSOCIATES, INC.
 2176 PARKWAY LAKE DRIVE
 HOOVER, AL 35244
 PHONE: (205) 942-2486
 CONTACT: DEREK S. READ, PLS

UTILITY CONTACTS

BIRMINGHAM WATER WORKS BOARD 3650 11TH AVENUE NORTH BIRMINGHAM, AL 35222 CUSTOMER SERVICE PHONE: (205) 244-4000	JEFFERSON COUNTY ENVIRONMENTAL SERVICES BIRMINGHAM, AL SERVICES ADMINISTRATION PHONE: (205) 325-5496	ALABAMA POWER CO. BIRMINGHAM, AL PHONE: (205) 226-1253 CONTACT: JEFF OTWELL	AT&T PHONE: (888) 757-6500	ALABAMA GAS COMPANY BIRMINGHAM, AL PHONE: (205) 326-8349 CONTACT: MYRON MONROE
---	--	--	-------------------------------	---

Order Plans

Buffalo Wild Wings

Buffalo Wild Wings
 Realty Link
 1416 4th Avenue South, Birmingham, AL

Sheet Title
UTILITY PLAN

Date
 2-9-2018

Checked By
 BLH

Drawn By
 MTH

Sheet Number
C5.0

Sequence
 6

Total
 9

