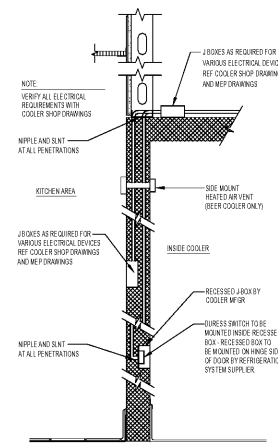
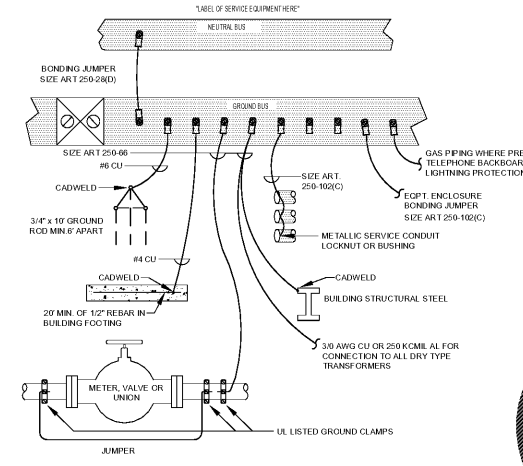


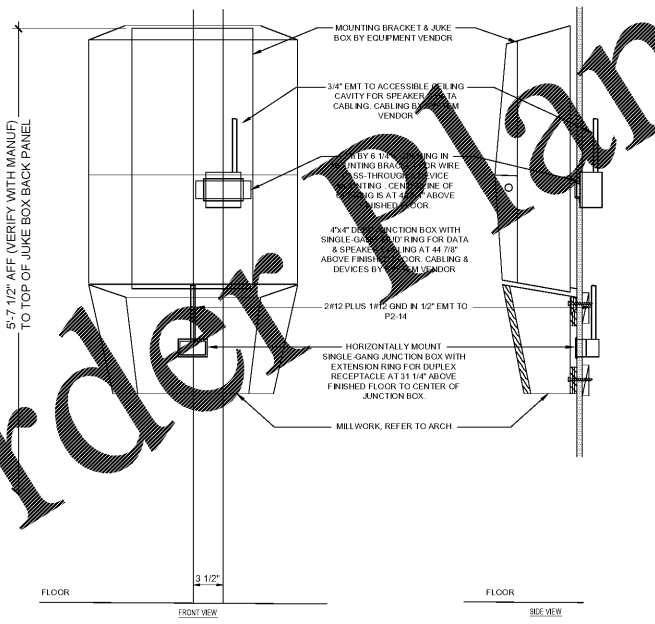
1B TV BRACKET RECEPTACLE DETAIL (NIC)  
N.T.S.



1C COOLER/FREEZER DETAIL  
N.T.S.



2C SERVICE GROUND DETAIL  
N.T.S.



1E JUKE BOX DETAIL  
N.T.S.

ELECTRICAL CONTRACTOR NOTES

- THIS SCHEDULE SHOWS ONLY THE REQUIREMENTS FOR FOOD SERVICE EQUIPMENT FOR EQUIPMENT FURNISHED BY OTHERS.
- ALL WORK TO BE IN COMPLIANCE WITH PREVAILING CODES.
- ALL ELECTRICAL CONDUIT IS TO BE RUN WITH WALL CAVITY, BONES & RECEPTACLES TO BE INSET FLUSH WITH WALL SURFACE. SURFACE MOUNTED WORK IS NOT ACCEPTABLE.
- CONTRACTOR IS TO VERIFY ALL REQUIREMENTS FOR EXISTING EQUIPMENT TO BE IDENTIFIED ON ITEMS LABELED AS BEING FURNISHED BY OTHERS.
- ALL ELECTRICAL CONNECTION HEIGHTS ARE TO CENTER LINE OF ROUGH-IN, UNLESS NOTED OTHERWISE.
- CONTRACTOR SHALL PROVIDE ALL CONDUIT, WIRING, BOXES, SWITCHES, FACEPLATES, BRACKETS, ETC. TO COMPLETE INSTALLATION. ALSO MAKE ALL FINAL CONNECTIONS TO KITCHEN EQUIPMENT INCLUDING ALL INTER WIRING REQUIRED FOR WALK-IN COOLERS & FREEZERS & THEIR COMPRESSORS, BLOWER COILS, TIMERS, HEATERS AND LIGHTING IN ACCORDANCE WITH KITCHEN CONSULTANT ROUGH-IN DRAWINGS, APPLICABLE CODES AND MANUFACTURER'S/SUPPLIER'S DOCUMENTATION.
- CONTRACTOR SHALL PROVIDE ALL INTERWIRING FOR EXHAUST HOOD LIGHTING, BLOWERS, DAMPERS AND FIRE SUPPRESSION SYSTEM, INCLUDING THE SUPPLYING AND INSTALLATION OF A SHUNT-TRIP BREAKER FOR EQUIPMENT AND A FAN INTERLOCK MECHANISM. ALL WORK SHALL BE IN ACCORDANCE WITH KITCHEN CONSULTANT ROUGH-IN DRAWINGS, APPLICABLE CODES AND MANUFACTURER'S/SUPPLIER'S DOCUMENTATION.
- UNLESS OTHERWISE SPECIFIED, THE CONTRACTOR SHALL PROVIDE AND INSTALL ALL CORDS, WITH PLUGS AND RECEPTACLES WHERE NECESSARY AND IN ACCORDANCE WITH KITCHEN CONSULTANT ROUGH-IN DRAWINGS, APPLICABLE CODES AND MANUFACTURER'S/SUPPLIER'S DOCUMENTATION. THIS SHALL INCLUDE ALL VOLTAGES (REF. 120, 208, 220, 240).
- ALL WALK-IN BOX (W.I.B.) REFRIGERATION EQUIPMENT SHALL BE INSTALLED COMPLETE WALL LINE VOLTAGE CIRCUITRY BEING PROVIDED BY THE W.I.B. SUPPLIER/INSTALLER. SEE NOTE 7 ABOVE. CONTRACTOR SHALL INSTALL CIRCUITRY, LIGHTING, SWITCHES, & HEAT TRACING AS DIRECTED BY THE W.I.B. SUPPLIER/INSTALLER WITH THE W.I.B. SUPPLIER/INSTALLER FURNISHING THOSE COMPONENTS. FIELD COORDINATION IS REQUIRED. CONTRACTOR SHALL ROUTE CIRCUIT OUTSIDE OF W.I.B. WHENEVER POSSIBLE. SHALL MINIMIZE PENETRATIONS OF THE W.I.B. & SHALL SEAL ALL PENETRATIONS (SCREWS, AROUND EXTERIOR OF CONDUITS, & CONDUIT INTERIORS) PRIOR TO START UP IF REFRIGERATION EQUIPMENT.

GENERAL NOTES

- DRAWINGS ARE SCHEMATIC IN NATURE AND MAY NOT BE DRAWN EXACTLY TO SCALE. CONTRACTOR IS RESPONSIBLE FOR COORDINATING EXACT ROUTING OF ALL SERVICES WITH EXISTING CONDITIONS AND WITH ALL OTHER TRADES.
- REFER TO ARCHITECTURAL REFLECTED CEILING PLAN FOR CEILING TYPES AND EXACT LOCATION OF ALL FIXTURES. VERIFY GELING TYPES WITH ARCHITECT PRIOR TO ORDERING LIGHT FIXTURES TO ENSURE COMPATIBLE FIXTURE, TRIMS AND MOUNTING HARDWARE.
- ALL WORK SHALL COMPLY WITH THE LATEST EDITION OF THE NATIONAL ELECTRICAL CODE, AND ALL APPLICABLE LOCAL AND STATE CODES.
- ALL CIRCuits SHALL INCLUDE A GREEN GROUND CONDUCTOR SIZED IN ACCORDANCE WITH NEC 250 OR LARGER IF NOTED.
- ALL PENETRATIONS OF FIRE RATED PARTITIONS DUE TO THE INSTALLATION OF ELECTRICAL SYSTEMS SHALL BE SEALED TO MAINTAIN THE FIRE RATING OF THE WALL, CEILING OR FLOOR.
- ALL CONDUITS EXPOSED TO PUBLIC VIEW SHALL BE PAINTED. VERIFY COLOR WITH OWNER AND ARCHITECT.
- CONTRACTOR SHALL CONNECT ALL LIGHTS AND POWER FOR ALL OWNER FURNISHED CASEWORK. REFER TO OWNER'S FURNITURE AND FIXTURE LAYOUT FOR EXACT HEIGHTS AND LOCATIONS.
- NO MORE THAN (3) CURRENT CARRYING CONDUCTORS SHALL BE INSTALLED IN ANY CONDUIT.
- ALL CONDUIT PENETRATIONS OF THE ROOF SHALL OCCUR WITHIN THE MECHANICAL CURBS, EXCEPT WHERE SPECIFICALLY INDICATED OTHERWISE.
- NO CONDUIT SHALL BE ROUTED IN ANY PARTITION WITH A TILE FINISH.
- UNDERGROUND PVC CONDUITS SHALL CONVERT TO RIGID GALVANIZED STEEL ELBOW AND CONTINUE AS RIGID GALVANIZED STEEL CONDUIT UNTIL EMERGENCE FROM SLAB OR CONCRETE ENCASMENT. PROVIDE THREADED CAPS AT BOTH ENDS OF SPIRAL OR UNISED CONDUITS.
- EXCEPTION: ALL PARTS OF UNDERGROUND LIGHTING BRANCH CIRCUIT CONDUITS MAY BE PVC.
- ALL WALL LIGHT SWITCHES SHALL BE RATED AT 20A.
- ALL JUNCTION BOXES MOUNTED ABOVE CEILING SHALL BE MOUNTED 6\"/>

APPLICABLE TO ALL SHEETS

ITEM NO.	DESCRIPTION	VOLTS	AMPS	KW	HP	POWER SOURCE	CIB	FEEDER SIZE	TYPE CONNECTION	MOUNTING HEIGHT (AFF.)	RECEPTACLE TYPE	NOTES
100	100 NITROGEN GENERATOR (BEER BLASTER)	120V	18.00	1.80		P4-2	201	1/2\"/>				

- PRE-WIRED LIGHT FIXTURES BY COOLER MANUFACTURER. CIRCLES TO INCLUDE LIGHTS, DOOR HEATER, SWITCHES AND ALARMS. E.G. TO VERIFY REQUIREMENTS WITH WALK-IN MANUFACTURER AND APPROVED SHOP DRAWINGS PRIOR TO ROUGH-IN. SEE DETAIL 1C-E202 FOR MORE INFORMATION.
- COMPRESSOR AND PRE-WIRED TIME CLOCK ON ROOF. E.G. TO EXTEND TO DISCONNECT SWITCH ON UNIT.
- EVAPORATOR IS POWERED AS PART OF ROOF TOP CONDENSER UNIT. E.G. TO EXTEND FROM CONDENSER TO EVAPORATOR AS REQUIRED.
- CONNECTION IS ON COMMON CIRCUIT WITH LIGHTS #102, & #103. EXTEND POWER TO HEAT TAPE IN COMMON CONDUIT WITH EVAPORATOR.
- FOR #103 HEAT TAPE IS COMMON WITH #102 & IS POWERED FROM #103 SOURCE.
- E.C. TO MOUNT RECEPTACLE ON UNDERSIDE OF BEER COOLER CEILING.
- E.C. TO EXTEND TO GYLVOL UNIT.
- E.C. TO EXTEND AND CONNECT TO CLASSWASHER.
- PLUG INTO WIREWAY ON UNDERSIDE OF KITCHEN SOFFIT. SEE ELEVATION 2 & 3 ON SHEETS K.
- E.C. TO EXTEND IN COMMON J-BOX TO SEPARATE CONNECTIONS TO HEAT LAMP# 1418 & 1419. WIRE SEPARATE CONTROLLER FOR EACH HEAT LAMP.
- ICE MACHINE AND CONDENSER INTERWIRING. SEE DETAIL ON KITCHEN EQUIPMENT DRAWINGS. REFERENCE MFR'S SPEC FOR REMOTE REFRIGERATION REQUIREMENTS.
- E.C. TO EXTEND AND CONNECT TO DRISHWASHER. UNIT IS PROVIDED FOR OPTIONAL SINGLE POINT 3 PHASE CONNECTION.
- SEE SHEETS E201, 203, & 401.
- VERIFY REQUIREMENTS WITH VENDOR PRIOR TO ROUGH-IN.
- PROVIDE DEEP WEATHERPROOF RAINSE COVER. SEE E201. (NOTE RECEPTACLE IS OVERSIZED)
- REFER TO HOOD DRAWINGS FOR MORE INFORMATION.
- WHERE "S" IS INDICATED PROVIDE WITH SHUNT TRIP.

ELECTRICAL SYMBOL LEGEND

SYMBOL	DESCRIPTION
⊕	DUPLEX RECEPTACLE, 1\"/>

ABBREVIATIONS

AFF	ABOVE FINISHED FLOOR
AFG	ABOVE FINISHED GROUND
ATS	AUTOMATIC TRANSFER SWITCH
BH	BASEBOARD HEATER
EW	ELECTRIC WATER COOLER
EWV	ELECTRIC WATER HEATER
OS	OCCUPANCY SENSOR
FBO	FURNISHED BY OTHERS
FBE	FURNISHED BY ELECTRICIAN
BE	BE INSTALLED BY ELECTRICIAN
NIC	NOT IN CONTRACT
XFR	TRANSFER
U.N.O.	UNLESS OTHERWISE NOTED

**PRANGER GROUP INC.**  
PROJECT MANAGER

**BUFFALO WILD WINGS**  
BIRMINGHAM  
1416 4th AVENUE SOUTH,  
BIRMINGHAM, AL 35233

**BUFFALO WILD WINGS**

NO.	DESCRIPTION	DATE
1		
2		
3		
4		
5		
6		
7		

Drawing Title  
**POWER PLAN DETAILS**

E202