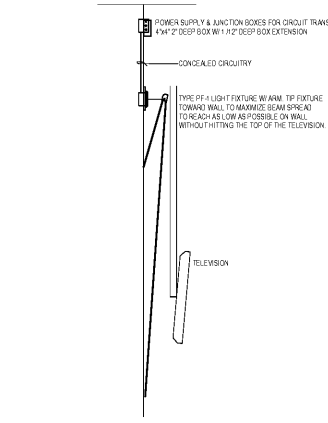
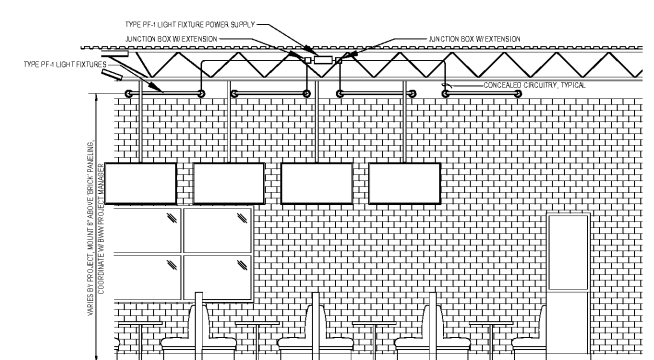


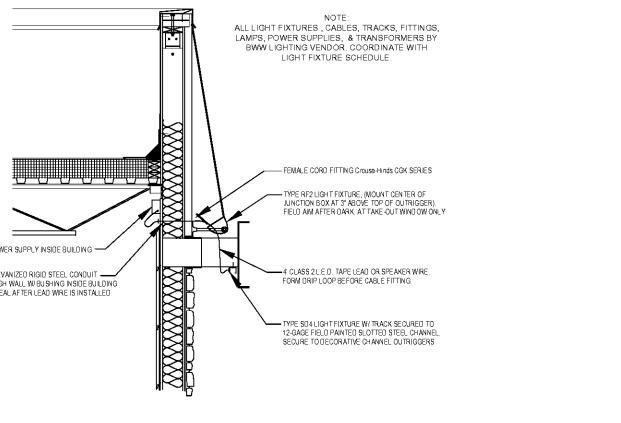
1A 'CLOUD' (TM) LIGHTING DETAIL
1/4\"/>



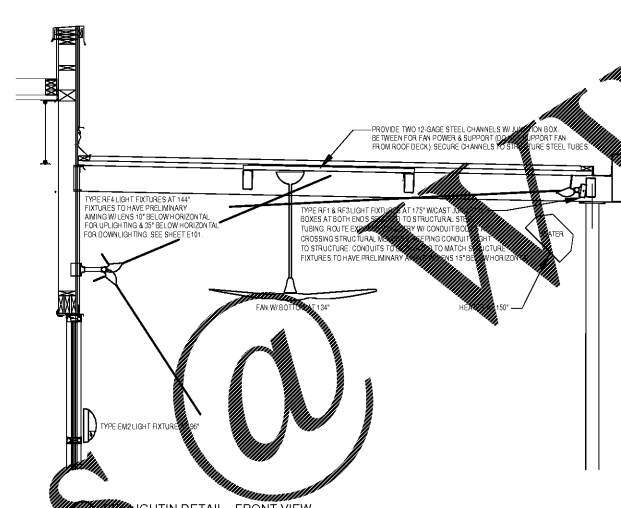
1B PF1 LIGHTING DETAIL - SIDE VIEW
1/4\"/>



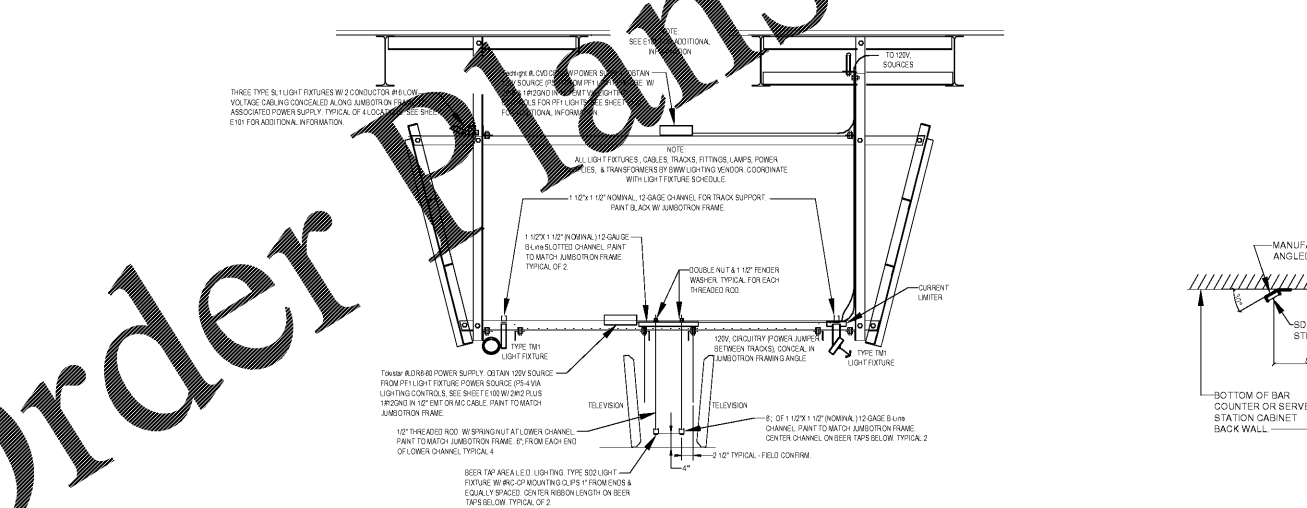
1C PF1 LIGHTING DETAIL - FRONT VIEW
1/4\"/>



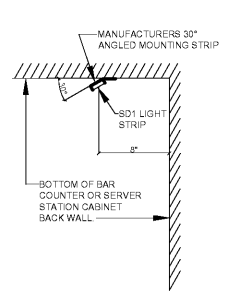
2B SD4 LIGHTING DETAIL
1/4\"/>



2C LIGHTING DETAIL - FRONT VIEW
1/4\"/>



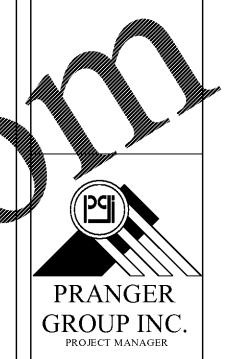
2E LIGHTING DETAIL - JUMBOTRON
1/4\"/>



2F UNDER-BAR/UNDER-CABINET LED LIGHT STRIP MOUNTING DETAIL
1/4\"/>

TYPE	DESCRIPTION	MANUFACTURER	CATALOG NUMBER	LAMPS	ENERGY CODE FIXTURE WATTAGE	VOLTS	REMARKS
AM3	RECESSED INCANDESCENT	None	NMR13N18150 HOUSING NMR13653BW TRIM	3-17w-L E.D. PAR38 Philips #17PAR38/F36 3000 DIM AF 61	60	120	1, 2
BC1	8\"/>						

1. FIXTURE IS FURNISHED BY Buffalo Wild Wings & INSTALLED BY CONTRACTOR. SEE SHEET 0002.
2. LAMP SHALL BE L.E.D. LONG NECK, STYLE, PAR30, NARROW FLOOD W/ MINIMUM C.R.I. OF 80 & 3000°K COLOR TEMPERATURE SUITABLE FOR DRY & DAMP LOCATIONS & DIMMING FIXTURES SHALL HAVE 20w MAXIMUM WATTAGE LABELS ON ALL SOCKETS.
3. SEE FOOTING DETAIL ON SHEET MEP001.
4. STEM MOUNT CANOPY (ASM-91), WIRE GUARD (WRG-91), & 3\"/>



PROJECT NUMBER
5748

BUFFALO WILD WINGS
BIRMINGHAM
1416 4th AVENUE SOUTH,
BIRMINGHAM, AL 35233



NO	DESCRIPTION	DATE
1		
2		
3		
4		
5		
6		
7		

Drawing Title
**LIGHTING
DETAILS**

E102

Order Plans