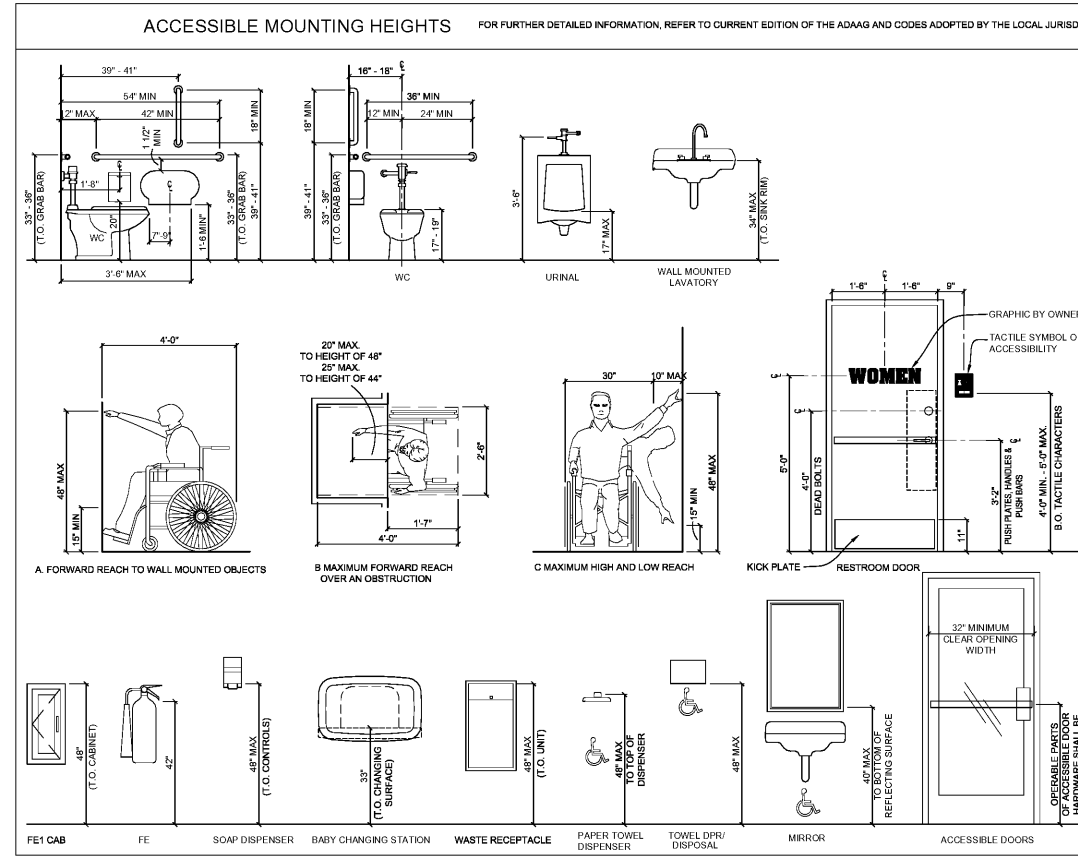
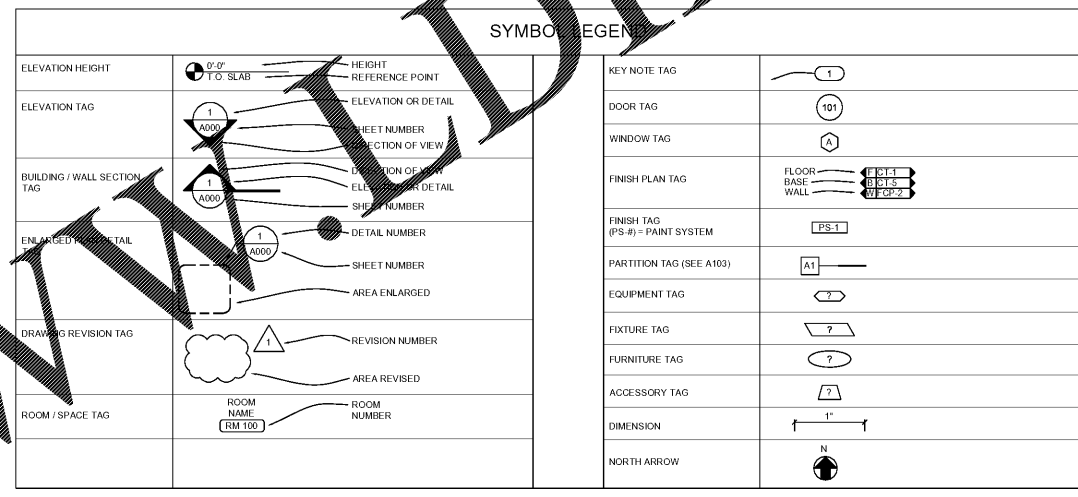


PROJECT RESPONSIBILITY MATRIX		NOTE: GENERAL CONTRACTOR TO ASSUME ALL ITEMS NOT INDICATED ON RESPONSIBILITY MATRIX SHALL BE FURNISHED, INSTALLED, AND COORDINATED BY G.C.									
		SPEC	LL	OWNER/OWNER	GC	GC	GC	GC	GC	GC	GC
<b>01 GENERAL REQUIREMENTS</b>											
1	BUILDING REQUIREMENTS										
<b>02 EXISTING CONDITIONS</b>											
<b>03 CONCRETE WORK</b>											
<b>04 MASONRY</b>											
<b>05 METALS</b>											
<b>06 WOOD AND PLASTICS</b>											
<b>07 THERMAL MOISTURE</b>											
<b>08 DOORS AND HARDWARE</b>											
<b>09 FINISHES</b>											
<b>10 SPECIAL TIES</b>											
<b>11 EQUIPMENT</b>											
<b>12 FURNISHINGS</b>											

PROJECT RESPONSIBILITY MATRIX		NOTE: GENERAL CONTRACTOR TO ASSUME ALL ITEMS NOT INDICATED ON RESPONSIBILITY MATRIX SHALL BE FURNISHED, INSTALLED, AND COORDINATED BY G.C.									
		SPEC	LL	OWNER/OWNER	GC	GC	GC	GC	GC	GC	GC
<b>20, 21, 22, &amp; 23 MECHANICAL</b>											
<b>24 ELECTRICAL</b>											
<b>25 PLUMBING</b>											
<b>26 FIRE PROTECTION</b>											



NOTES:  
 B/W AND ITS VENDORS MUST COMPLETE THE FOLLOWING ITEMS TO OBTAIN A FINAL G.C. DEVELOPER'S GC IS RESPONSIBLE FOR SCHEDULE COORDINATION WITH B/W VENDORS.  
 1) SUBMIT PLANS FOR DEPARTMENT OF HEALTH APPROVAL  
 2) TELEPHONE SYSTEM OPERATIONAL  
 3) HOOD ANSUL FIRE SUPPRESSION SYSTEM OPERATIONAL  
 4) KITCHEN FIRE SUPPRESSION SYSTEM OPERATIONAL  
 HEALTH DEPARTMENT

Order Plans

CERTIFICATION

**PRANGER GROUP INC.**  
PROJECT MANAGER

PROJECT NUMBER  
5748

**BUFFALO WILD WINGS**  
BIRMINGHAM  
1416 4th AVENUE SOUTH,  
BIRMINGHAM, AL 35233

DRAWING ISSUE		DATE
NO	DESCRIPTION	
1		
2		
3		
4		
5		
6		
7		

Drawing Title  
**RESPONSIBILITY MATRIX, GENERAL ARCH INFO**

**G002**