

FIXTURE / EGRESS PLAN
SCALE: 1/8" = 1'-0"

- NOTES:**
1. NO GONDOLA UNITS, FIXTURES, OR PALLETS SHALL BE OVER 8'-0" AFF.
 2. FIXTURE PLAN IS "FOR REFERENCE ONLY." CONTRACTOR SHALL CONTACT DOLLAR TREE FOR FINAL APPROVED LAYOUT.
 3. MAXIMUM TRAVEL DISTANCE SHALL BE 250'-0". ACTUAL TRAVEL DISTANCE AS SHOWN: ()
 4. CHECKOUTS ARE NOT ATTACHED TO FLOOR.

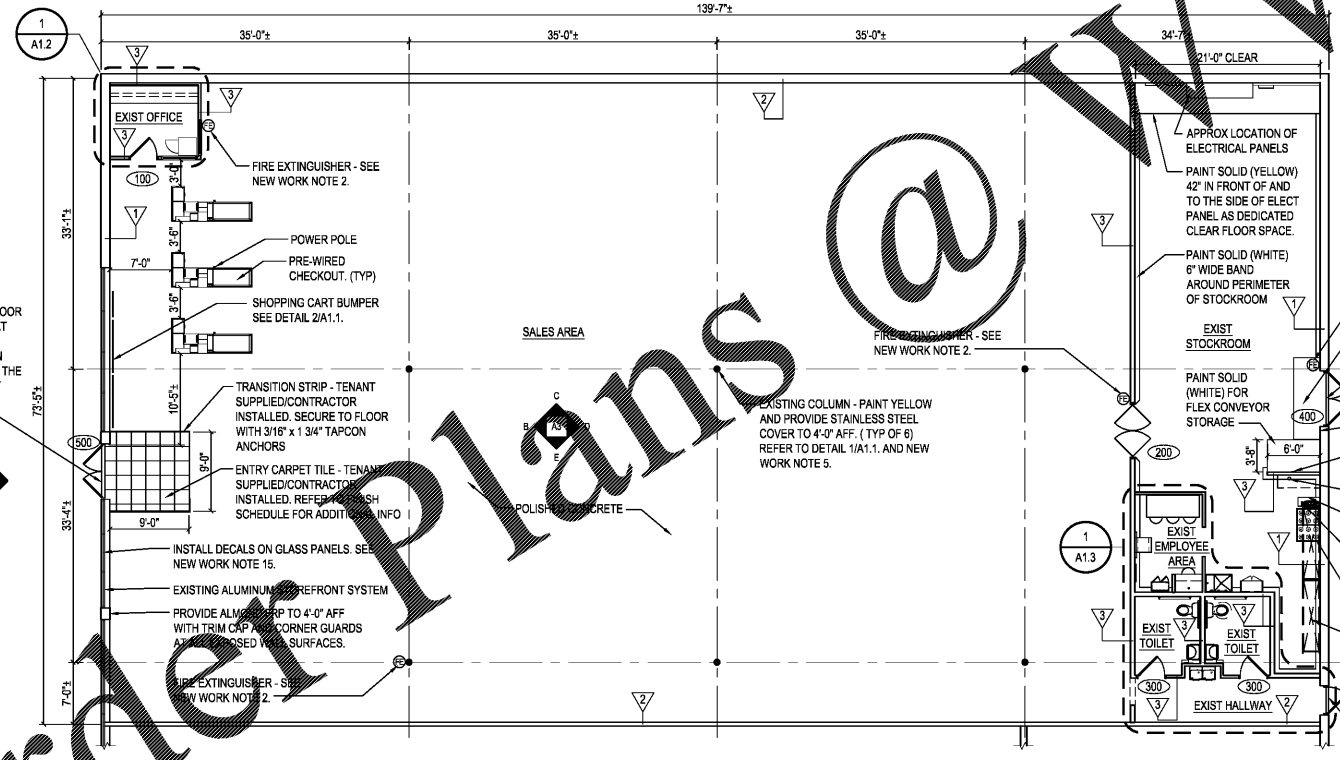


GENERAL INFORMATION:

SHOPPING CENTER: OAKBROOK STATION
CITY: SUMMERVILLE
STATE: SOUTH CAROLINA
CEILING HEIGHT (SALES AREA): 12'-0"
SPRINKLERED: YES

SQUARE FOOTAGES

TOTAL SPACE LEASED: 10,244 SF
SALES FLOOR AREA: 8,607 SF 16.0 %
NON-SALES AREA: 1,637 SF 10.1 %
USABLE STOCKROOM: 1,039 SF 10.1 %
USABLE SALES FLOOR: 8,338



FLOOR PLAN
SCALE: 1/8" = 1'-0"

WALL CONSTRUCTION TYPES

▽ EXTERIOR DEMISING WALL: EXISTING WALL. PATCH AND REPAIR WALL AS REQUIRED. FINISH PER FINISH SCHEDULE, THIS SHEET.

▽ PARTITION WALL: EXISTING METAL STUDS AND GWB. PATCH AND REPAIR AS REQUIRED. FINISH PER FINISH SCHEDULE, THIS SHEET.

▽ TENANT DEMISING WALL: EXISTING WALL. PATCH AND REPAIR WALL AS REQUIRED TO MAINTAIN FIRE RATING PER CODE. FINISH PER FINISH SCHEDULE, THIS SHEET.



FINISH SCHEDULE

SPACES	FLOORS	BASES	WALLS	CEILING	NOTES
SALES	ENTRY CARPET TILE / POLISHED CONC	4" VINYL	GWB-PAINT YELLOW / FRP	EXIST ACT	1,2,4,5,6,9,11,12
EXIST STOCKROOM	CONCRETE	---	EXISTING	---	2,8,11,14
EXIST EMPLOYEE AREA	CONCRETE	---	GWB / PLYWOOD	---	6,8,13
EXIST OFFICE	POLISHED CONC	4" VINYL	GWB-PAINT WHITE	---	2,5,6,9,10,12
EXIST TOILET	EXIST SHEET VINYL	EXIST SHEET VINYL	EXIST FRP	EXIST GWB	3,6,7,9,11
EXIST HALLWAY	POLISHED CONC	4" VINYL	GWB-PAINT WHITE / FRP	EXIST ACT	2,4,6,11,12

- FINISH NOTES**
1. CARPET TILE: MANUFACTURED BY INTERFACE FLOORING SYSTEMS AND TENANT SUPPLIED / CONTRACTOR INSTALLED. INSTALL TILES QUARTER TURNED AND PER TENANTS CRITERIA.
ENTRY TILE: DECO RIB, STYLE #678609900.
CONTRACTOR SHALL PREPARE FLOOR SURFACE AND COORDINATE CARPET INSTALLATION W/ CARPET INSTALLER.
VINYL COVE BASE: COLOR - BLACK. (VINYL BASE ONLY ON EXPOSED WALLS NOT COVERED BY GONDOLAS IN SALES AREA.)
VINYL COVE BASE TO BE LOCATED IN STOCKROOM AT MOP SINK AND CABINET ONLY UON.
 2. SHEET VINYL: CLASSIC CORLON SERIES MANUFACTURED BY ARMSTRONG - CONNECTION CORLON "PORCELAIN" #88724 OR EQUAL.
SHEET VINYL BASE: INTEGRAL, 3/8" RADIUS, 6" COVE BASE W/ COVE STICK AND EXTRUDED ALUMINUM TRIM.
REPLACE MISSING OR DAMAGED ACT. REPLACE REST OF THE 2'-0" X 4'-0" TILES TO MATCH EXISTING. CLEAN BEFORE CEILING GRID WITH CLEANING SPRAY TO PROVIDE UNIFORM WHITE SURFACE.
SLATWALL: SLATWALL WHITE MELANIN FINISH. SEE MANUFACTURER'S DRAWING FOR INSTALLATION DETAILS.
PAINT COLOR CODES AS FOLLOWS:
SHERWIN WILLIAMS PRO 200 LATEX SEMI-GLOSS WHITE W/ B-1 PER GALLON.
BENJAMIN MOORE PRODUCT 274 "LEMON SORBET" #2019-60 (EGGSHELL FINISH)
BENJAMIN MOORE PRODUCT 274 "FOREST GREEN" #2047-10 (EGGSHELL FINISH)
 3. PAINT TOILET ROOM EXTERIOR WALLS WHITE.
 4. EXIST CONCRETE FLOOR TO REMAIN. PATCH AND REPAIR AS REQUIRED TO PROVIDE SMOOTH SURFACE.
 5. SLATWALL IS TENANT SUPPLIED / CONTRACTOR INSTALLED. ALL OTHER FINISHES SHALL BE PROVIDED AND INSTALLED BY CONTRACTOR.
 6. INSTALL TENANT SUPPLIED FILING CABINETS UNDERNEATH EXISTING CONCRETE. REFER TO OFFICE LAYOUT.
 7. FRP (FIBERGLASS REINFORCED PANEL) IN TOILET ROOM FROM FLOOR TO 4'-0" AFF SHALL BE WHITE COLOR (IN STOCKROOM BEHIND MOP SINK UTILITY CABINET ONLY. IN HALLWAY BEHIND DRINKING FOUNTAIN ONLY.) FRP ON SALES FLOOR - SEE NOTES IN PLANS/ELEVATIONS SHALL BE SECOND COAT 1/2" CHANNEL TRIM CAP AND 1/4" CHANNEL PANEL CONNECTORS.
 8. POLISHED CONCRETE FLOOR ON SALES FLOOR AND OFFICE.
 9. POLISHED CONCRETE FLOOR BY TENANT'S VENDOR. COORDINATE WITH TENANT.
 10. PAINT EMPLOYEE AREA WALLS TO 4'-0" AFF "FOREST GREEN".
 11. PAINT 6" WIDE BAND ON CONCRETE FLOOR AROUND PERIMETER OF STOCKROOM WITH 2 COATS BENJAMIN MOORE "FDBM WHITE" TOUGH SHIELD ACRYLIC GLOSS TY-43. PAINT BAND PRIOR TO PAINTING ANY YELLOW CLEAR FLOOR SPACE AREAS.

DOOR SCHEDULE

#	DOORS			MATERIAL	DETAILS			FR	HDW NOTES	DOOR NOTES
	W	H	T		HEAD	JAMB	SILL			
100	3'-0"	6'-8"	1 3/4"	EXIST SOLID CORE WD	-	-	-		100A	3,5
200	PR 3'-0"	7'-0"	.063"	EXIST. ALUM ALLOY	-	-	-		200A	2,3,7,10,12
300	3'-0"	6'-8"	1 3/4"	EXIST SOLID CORE WD	-	-	-		300C	3,5,6,9
400	PR 3'-0"	7'-0"	1 3/4"	EXIST HOL METAL	-	-	-		400A	3,4,5,8
401	3'-0"	7'-0"	1 3/4"	EXIST HOL METAL	-	-	-		400C	3,4,5,8,11
500	PR 3'-0"	7'-0"	1 3/4"	EXIST STOREFRONT	-	-	-		500A	1,3,8

- DOOR NOTES**
1. PROVIDE A SIGN POSTED ON THE EGRESS SIDE ON OR ADJACENT TO THE DOOR STATING "THIS DOOR TO REMAIN UNLOCKED WHEN BUILDING IS OCCUPIED." THE SIGN SHALL BE IN LETTERS 1" HIGH ON A CONTRASTING BACKGROUND.
 2. EXISTING DOORS - ELIASON BI-SWING DOORS W/ WINDOW.
 3. DOOR, FRAME AND HINGES ARE EXISTING. PROVIDE AND INSTALL ANY MISSING ITEMS OF HARDWARE PER HARDWARE NOTES.
 4. PROVIDE (ONE) PEEP HOLE TO VIEW OUT. MOUNT @ 5'-0" AFF.
 5. PAINT DOOR AND FRAME W/ WHITE SEMI-GLOSS ENAMEL PAINT.
 6. INSTALL TENANT SUPPLIED SIGNAGE PER DETAIL D1A1.3.
 7. EXISTING JAMBS REINFORCED WITH WOOD BLOCKING.
 8. CONTRACTOR TO PROVIDE AND INSTALL DOOR SWEEP ON ALL EXTERIOR DOORS TO PREVENT WATER, WIND AND DEBRIS INFILTRATION.
 9. PROVIDE COAT HOOK AT 48" AFF. ON BACK SIDE OF DOOR.
 10. PAINT DOOR FRAME WHITE WITH SEMI-GLOSS ENAMEL PAINT. DOOR TO REMAIN WITH ORIGINAL FINISH.
 11. PROVIDE SIGNAGE THAT READS "EMERGENCY EXIT ONLY."
 12. PROVIDE SIGNAGE THAT READS "EMPLOYEES ONLY."
- GENERAL HARDWARE NOTES:**
1. THRESHOLDS AT EGRESS DOORS SHALL BE NO MORE THAN 1/2" (MAX) HEIGHT AFF.
 2. ALL DOOR HANDLES, PULLS, LATCHES, LOCKS AND OTHER OPERATING DEVICES SHALL BE INSTALLED 34" (MIN) TO 44" (MAX) AFF AND SHALL BE "SINGLE-HANDED" OPERABLE WITHOUT USE OF KEY OR SPECIAL KNOWLEDGE.
 3. WHERE EGRESS DOORS ARE USED IN PAIRS, THE UNLATCHING OF THE LEAF SHALL NOT REQUIRE MORE THAN ONE (1) OPERATION AS MENTIONED IN GENERAL HARDWARE NOTE #2 ABOVE.
 4. CONTROLS AND OPERATING MECHANISMS SHALL BE LEVER-TYPE (OR EQUAL) PROVIDING OPERATION WITH ONE HAND AND NOT REQUIRE TIGHT GRASPING, PINCHING, OR TWISTING OF THE WRIST.
 5. THE FORCE REQUIRED TO ACTIVATE CONTROLS OF INTERIOR HINGED DOORS SHALL BE NO GREATER THAN 5 POUNDS (22.2 N).
 6. DOORS EQUIPPED WITH CLOSERS SHALL BE ADJUSTED SO THAT THE SWEEP PERIOD FROM AN OPEN POSITION OF 70 DEGREES WILL TAKE AT LEAST 3 SECONDS TO MOVE TO A POINT 3" FROM THE LATCH, MEASURED FROM THE LEADING EDGE OF THE DOOR.
- HARDWARE NOTES**
- HDW # 100A
EXIST 1 1/2 PAIR HINGES: STANDARD WEIGHT
INSTALL 1 MECHANICAL PUSH BUTTON LOCKSET WITH LEVER HANDLE
EXIST 1 CLOSER
EXIST 1 FLOOR STOP
- HDW # 200A
LWP-3 ALUMINUM TRAFFIC DOOR
EASY SWING HINGE SYSTEM
9" X 30" CLEAR ACRYLIC WINDOW
FLUSH HOLLOW METAL FRAME - DRYWALL
- HDW # 300C
EXIST 1 1/2 PAIR HINGES: STANDARD WEIGHT
EXIST 1 PRIVACY SET WITH LEVER HANDLE
EXIST 1 CLOSER
EXIST FLOOR/WALL STOP
- HDW # 400A
EXIST 3 PAIR HINGES: 4 1/2" HEAVY WEIGHT, NON-REMOVABLE PINS
EXIST 1 NON-ALARMED, NON-KEYED PANIC BAR DEVICE
EXIST 2 FLUSH BOLTS (ON INACTIVE LEAF)
EXIST 1 DUST PROOF STRIKE
EXIST 1 ALUM THRESHOLD (1/2" MAX HEIGHT)
EXIST 2 SWEEPS
EXIST 1 WEATHER STRIP
EXIST 1 RAIN DRIP
EXIST 1 ASTRAGAL
INSTALL PEEP HOLE
INSTALL STAND ALONE ALARM - REFER TO DOOR ALARM MOUNTING DETAIL. (TENANT SUPPLIED)
INSTALL 2 OVERHEAD HOLDERS/STOPS (TENANT SUPPLIED)
- HDW # 400C
EXIST 1 1/2 PAIR HINGES: STANDARD WEIGHT, NON-REMOVABLE PINS
EXIST 1 NON-ALARMED, NON-KEYED PANIC BAR DEVICE
EXIST 1 CLOSER WITH STOP ARM
EXIST 1 ALUM THRESHOLD (1/2" MAX HEIGHT)
EXIST 1 SWEEP
EXIST 1 WEATHER STRIP
EXIST 1 RAIN DRIP
INSTALL PEEP HOLE
- HDW # 500A
EXIST HINGES PER STOREFRONT MANUFACTURER
EXIST 2 PUSH PLATES
EXIST 2 PULL HANDLES
EXIST COMMERCIAL GRADE DEADLOCK W/ THUMB TURN ON SALES SIDE
EXIST 2 CLOSERS
INSTALL KABA CYLINDER (TENANT SUPPLIED)
NOTE: CONTRACTOR SHALL VERIFY CLOSER DOES NOT HAVE A HOLD-OPEN FEATURE. IF CLOSER DOES, THE CONTRACTOR SHALL REPLACE WITH NEW CLOSER.

RRMM ARCHITECTS, P.C.
1317 Executive Blvd, Suite 200
Chesapeake, VA 23320
(757)622-2828 / fax (757)622-6883

DOLLAR TREE
OAKBROOK STATION, DEAL #10654
SUMMERVILLE, SOUTH CAROLINA
FLOOR PLAN, FIXTURE / EGRESS PLAN, SCHEDULES AND NOTES

date	project	designed	drawn	checked
1/11/2017	10654-01	SMB	SMB	DAE

description
by
date
mark
revisions

project
drawing
sheet

A1