



301 Industrial Blvd.
Tullahoma, TN 37388
Office: 931.454.9940
2605 Elm Hill Pike, S/C
Nashville, TN 37214
Phone: 615.678.6222
oliver@oliver.com
oliverengineering.com

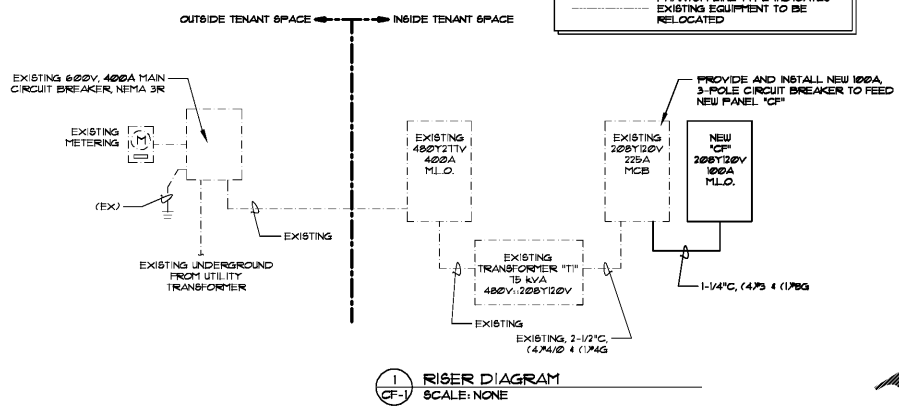
DEVICE*	DISCONNECT SIZE	CONDUIT WIRE SIZE	FEEDER PANEL	FEEDER BREAKER(S)
(C1)	JUNCTION BOX # 100" AFF W/10" WHIP	1/2" (2.70 & (1.70) GND.	CF	3
(C2)	8"x8"x6" JB # 120" AFF W/20" COILED WIRE	1/2" (2.70 & (1.70) GND.	CF	5
(F1)	JUNCTION BOX # 100" AFF W/10" WHIP	1/2" (2.70 & (1.70) GND.**	CF	7.5
(F2)	JUNCTION BOX # 100" AFF W/10" WHIP	3/4" (3.75 & (1.70) GND.**	CF	11.3
(F3)	8"x8"x6" JB # 120" AFF W/20" COILED WIRE	1/2" (2.70 & (1.70) GND.	CF	15.1
(CF)	8"x8"x6" JB # 120" AFF W/20" COILED WIRE	1/2" (2.70 & (1.70) GND.	CF	16

* FOR WALK-IN COOLER/FREEZER LIGHTS
NOTE: ALL DIMENSIONS ARE TO THE TOP OF THE ASSOCIATED DEVICE. FINAL TERMINATIONS TO COOLER + FREEZER EQUIPMENT IS BY THE EQUIPMENT INSTALLER.
** INCLUDES: (2) HOT, (1) NEUTRAL, & (1) GROUND

NOTE: ALL EXISTING COMPONENTS OF THIS ELECTRICAL RISER ARE TO REMAIN AS INSTALLED AND ARE SHOWN FOR REFERENCE ONLY.

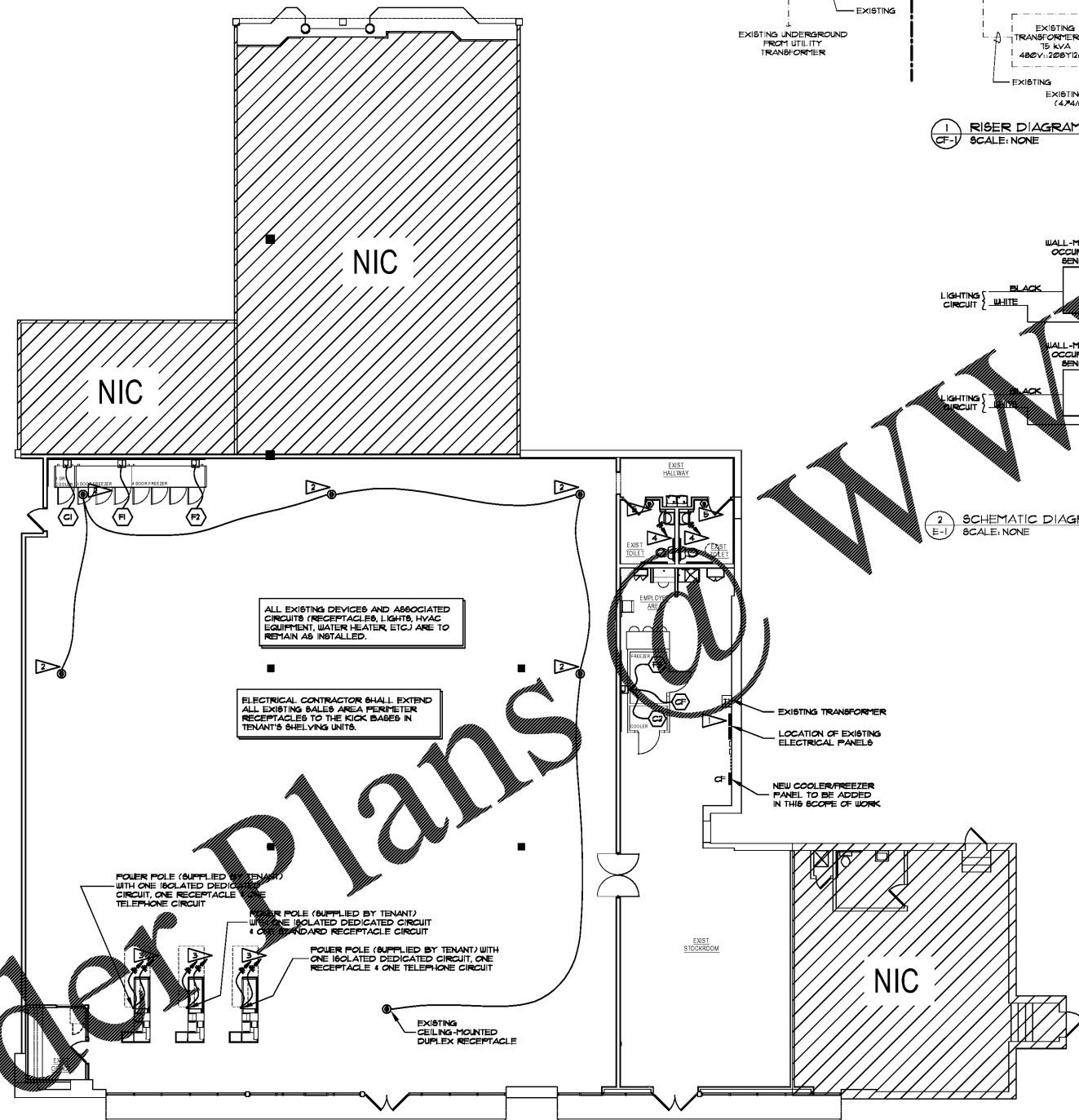
RISER LEGEND
DASH DOT LINE TYPE INDICATES EXISTING EQUIPMENT TO REMAIN
HIDDEN LINE TYPE INDICATES EQUIPMENT FURNISHED AND INSTALLED BY LANDLORD.
CONTINUOUS LINE TYPE INDICATES NEW EQUIPMENT TO BE INSTALLED
PHANTOM LINE TYPE INDICATES EXISTING EQUIPMENT TO BE RELOCATED

- GENERAL NOTES:**
- ALL WORK SHALL CONFORM TO THE LATEST EDITION OF THE NATIONAL FIRE PROTECTION ASSOCIATION (NFPA) 70, NATIONAL ELECTRICAL CODE. ALL ITEMS ARE ON AN OR EQUAL BASIS.
 - ALL SINGLE PHASE BRANCH CIRCUITS (RECEPTACLES, LIGHTING, ETC.) ARE 1/2" CONDUIT OR ENT W/ 3/32 OR MC CABLE TO THE EXTENT ALLOWED BY NEC AND THE LOCAL AUTHORITIES. ALL CONDUCTORS TO BE THIN W/ C WIRING. ALL OTHER CONDUIT AND WIRING SHALL BE AS INDICATED ON THE PLANS. ACTUAL ROUTING AND HOLE/IN GROUPINGS ARE TO BE DETERMINED IN THE FIELD.
 - ELECTRICAL DRAWINGS ARE DIAGRAMMATIC EXCEPT FOR DETAILS AND ELEVATIONS. DO NOT SCALE FROM DIAGRAMMATIC DRAWINGS. EXACT LOCATIONS OF DEVICES AND PANELS ARE TO BE DETERMINED AND ROUTED-IN DURING CONSTRUCTION TO AVOID INTERFERENCE. TO MEET USER REQUIREMENTS, TO PROVIDE ADEQUATE MOUNTING, AND TO MEET NEC LINEAR ACCESS AND CLEARANCE REQUIREMENTS.
 - BACK TO BACK MOUNTING OF RECEPTACLES IS NOT PERMITTED.
 - IN ADDITION TO THE NEC REQUIREMENTS FOR GFCI RATED RECEPTACLES, THE FOLLOWING RECEPTACLES SHALL ALSO BE GFCI RATED: (1) ALL RECEPTACLES LOCATED WITHIN 6 FEET OF A SINK; (2) ALL RECEPTACLES WHICH ARE PROVIDED FOR CONVENTIONAL SERVING HVAC EQUIPMENT REGARDLESS OF LOCATION; EITHER INDIVIDUAL GFCI DEVICES OR GFCI CIRCUIT BREAKERS ARE ACCEPTABLE BUT RECEPTACLES PROVIDED BY CIRCUIT BREAKERS OR OTHER GFCI DEVICES SHALL BE CLEARLY MARKED AS GFCI AND THE SOURCE OF PROTECTION SHOWN.
 - PROVIDE A LAMINATE NAMEPLATE (WITH LETTERS ON BLUES) ON EACH RECEPTACLE, MOTOR STARTER, CONTACTOR, TRANSFORMER, ETC. LETTERS SHALL BE 1/8" HIGH MINIMUM.
 - CONTRACTOR SHALL CUT AS REQUIRED TO INSTALL ELECTRICAL EQUIPMENT. REPAIR OF FLOOR OR WALLS SHALL BE COORDINATED WITH GENERAL CONTRACTOR. CONTRACTOR SHALL ALSO REPAIR ALL OPENINGS LEFT DUE TO EQUIPMENT REMOVAL.
 - CONDUCTORS ARE 90% COPPER UNLESS OTHERWISE SHOWN. CONDUCTORS LARGER THAN #10 SHALL BE STRANDED. RUNS IN TUBES SHALL BE ONE WAY. SHALL COMPLY WITH NATIONAL ELECTRICAL CODE MAXIMUM % VOLTAGE DROP.
 - PANELS AND RACKS SHALL CONTAIN A TYPEWRITTEN DIRECTORY WITH A PLASTIC COVER AFFIXED TO THE FRONT.
 - ALL FIXTURES, DEVICES, CONTACTORS, AND EQUIPMENT SHALL BE SECURED WITH APPROVED METHODS AND ANCHORS AND IN ACCORDANCE WITH APPROVED STANDARDS OF PRACTICE.
 - ALL BREAKERS SHOWN IN THE PANELBOARD SCHEDULE SHALL BE RATED AS SHOWN FOR BOTH CIRCUIT CAPACITY AND FAULT CURRENT INTERRUPTING CAPACITY.
 - ALL PANELBOARD DISCONNECT SWITCHES, MOTOR STARTERS, AND CONTACTORS SHALL BE NEW UNLESS OTHERWISE NOTED.
 - ELECTRICAL CONTRACTOR MUST BE AVAILABLE AT TIME OF DBS INSPECTION. COORDINATE WITH GENERAL CONTRACTOR.



- PROJECT NOTES:**
- CONTRACTOR TO VERIFY THAT EXISTING 208Y120V, 225A PANEL HAS ADEQUATE AVAILABLE CAPACITY TO ACCOMMODATE THE ADDITION OF A NEW 100A, 3-POLE BREAKER TO FEED NEW COOLER/FREEZER PANEL. IF CONTRACTOR TO REPORT ANY DISCREPANCIES THAT CAN NOT BE RESOLVED IN THE FIELD TO THE ENGINEER FOR FURTHER INSTRUCTION AND/OR POSSIBLE REDESIGN OF AFFECTED ITEMS.
 - THE DUPLEX OUTLETS TO BE MOUNTED IN CEILING AND ALL SHALL BE WIRED TO EXISTING 120V, 225A BREAKER PROVIDED IN LANDLORD'S SCOPE OF WORK. VERIFY LOCATIONS OF OUTLETS PRIOR TO INSTALLATION.
 - CONNECT TENANT-PROVIDED POWER POLES TO DEDICATED AND ISOLATED DEDICATED CIRCUITS AT THE EXISTING JUNCTION BOXES ABOVE THAT WERE PROVIDED BY THE LANDLORD.
 - CONNECT HAND DRYER TO EXISTING JUNCTION BOX/CIRCUIT PROVIDED BY LANDLORD.
 - TOILET ROOMS SHALL HAVE OCCUPANCY SENSORS INSTALLED AND CONNECTED AS SHOWN IN DETAIL 'E' - SCHEMATIC DIAGRAM, THIS SHEET. MOUNT ON WALL NEXT TO DOOR INSIDE RESTROOM. LIGHTS AND OCCUPANCY SENSORS TO BE WIRED INDEPENDENTLY OF THE ENERGY MANAGEMENT SYSTEM VIA EXISTING TOILET AREA LIGHTING CIRCUIT.

SPECIAL NOTE:
CONTRACTOR SHALL REFER TO ENERGY MANAGEMENT SYSTEM SHEETS PROVIDED IN THIS DRAWING PACKAGE FOR INSTRUCTION AND RESPONSIBILITY FOR INSTALLING TENANT SUPPLIED ENERGY MANAGEMENT SYSTEM PRIOR TO BIDDING AND INSTALLATION.
ALL EXISTING INTERIOR AND EXTERIOR LIGHTING CIRCUITS AND SIGN CIRCUITS SHALL BE ROUTED THROUGH THE ENERGY MANAGEMENT SYSTEM.



2 SCHEMATIC DIAGRAM: BATHROOM OCCUPANCY SENSOR
SCALE: NONE

PANEL SCHEDULE										
PANEL NUMBER	CF	LOCATION	STOCKROOM							STOCKROOM
DIRECTORY	NO. OF CIRCUITS	AMP SERVICE	KVA	3-PHASE TO 3-PHASE	3-PHASE TO 1-PHASE	3-PHASE TO 2-PHASE	3-PHASE TO 2-PHASE	3-PHASE TO 2-PHASE	3-PHASE TO 2-PHASE	
SPARE	1	2001	0.00	-	-	-	-	-	2001	1
REACH-IN COOLER (C1)	3	2001	1.50	-	-	-	-	-	2001	3
WALK-IN COOLER (C2)	5	2001	1.50	-	-	-	-	-	2001	5
REACH-IN FREEZER (F1)	7	2002	2.50	-	-	-	-	-	2002	7
REACH-IN FREEZER (F2)	11	4002	2.50	-	-	-	-	-	2001	12
WALK-IN FREEZER (F3)	15	2002	1.88	-	-	-	-	-	2001	16
COOLER/FREEZER LIGHTS (CF)	13	2001	0.50	-	-	-	-	-	2001	13
SPARE	21	2001	0.00	-	-	-	-	-	2001	22
SPARE	23	2001	0.00	-	-	-	-	-	2001	24
SPARE	25	2001	0.00	-	-	-	-	-	2001	26
SPARE	27	2001	0.00	-	-	-	-	-	2001	28
SPARE	29	2001	0.00	-	-	-	-	-	2001	30
TOTAL kW										17.52

LOAD SUMMARY			
	Connected kW	Demand Factor	Demand kW
LIGHTING	0.00	1.25	0.00
HVAC EQUIPMENT	0.00	1.00	0.00
RECEPTACLES	0.00	0.00	0.00
COOLER/FREEZER	17.52	1.00	17.52
WATER HEATER	0.00	1.00	0.00
TOTAL	17.52		17.52

NOTE: THIS NEW PANEL TO BE FED FROM EXISTING 208Y120V, 225A PANEL. PROVIDE AND INSTALL A NEW 100A, 3-POLE BREAKER IN THE 225A PANEL TO FEED NEW PANEL 'CF'

Order Plans

WWW.LITTELL.COM

OLIVER ENGINEERING

revision	mark	data	description
1			

revision	mark	date	description
1			

RRMM ARCHITECTS, PC
1317 Executive Blvd, Suite 200
Chesapeake, VA 23320
(757)622-2828 / fax (757)622-8883



DOLLAR TREE
DUTCH SQUARE MALL, DEAL #10811
COLUMBIA, SC
ELECTRICAL PLAN, NOTES, & DETAILS

revision	mark	date	description
1			