

LUMINAIRE SCHEDULE #B2:K37									
TYPE	MANUFACTURER AND CATALOG NUMBER	LIGHT SOURCE		POWER SUPPLY		INPUT WATTS	MOUNTING	DESCRIPTION	
		TYPE	NO.	TYPE	NO.				
A	LITHONIA 427L46L E2B-LP38 OR EQUIVALENT BY COLUMBIA OR DAYBRITE	LED	3800W	-	47	-	47	FLUSH CEILING	2x4 VOLUME TRIC LUMINAIRE, 2800 LUMENS, STEEL HOUSING BRANDED WHITE ENAMEL FINISH, PAINTED AFTER FABRICATION, AC OPTIC REFRACTIVE REFRACTOR WITH LIGHT DIFFUSION CONTROLS, CSA CERTIFIED, PROVIDE MOUNTING HARDWARE FOR GRID OR DRY WALL CEILING PER REFLECTED CEILING PLANS.
A1	LITHONIA 427L42L E2B-LP38 OR EQUIVALENT BY COLUMBIA OR DAYBRITE	LED	3800W	-	30	-	30	FLUSH CEILING	2x4 VOLUME TRIC LUMINAIRE, 2100 LUMENS, STEEL HOUSING BRANDED WHITE ENAMEL FINISH, PAINTED AFTER FABRICATION, AC OPTIC REFRACTIVE REFRACTOR WITH LIGHT DIFFUSION CONTROLS, CSA CERTIFIED, PROVIDE MOUNTING HARDWARE FOR GRID OR DRY WALL CEILING PER REFLECTED CEILING PLANS.
B	1027MAY EVO35-16-6A-R40-0-0 OR EQUIVALENT BY HOKU, OR KURT VERBEN	LED	3000W	-	26	-	26	FLUSH CEILING	6" ROUND OPEN DOWNLIGHT, LOW PROFILE, 12000 LUMENS, STEEL HOUSING BRANDED WHITE ENAMEL FINISH, PAINTED AFTER FABRICATION, AC OPTIC REFRACTIVE REFRACTOR WITH LIGHT DIFFUSION CONTROLS, CSA CERTIFIED, PROVIDE MOUNTING HARDWARE FOR GRID OR DRY WALL CEILING PER REFLECTED CEILING PLANS.
C	LITHONIA 5EM LED AL OR EQUIVALENT BY DAYBRITE OR COLUMBIA	LED	3800W	-	24	-	24	SUSPENDED	4" SQUARE OPEN DOWNLIGHT, 12000 LUMENS, PROVIDE WITH WIRE GUARD, 1200 LUMENS.
D	LITHONIA 1821Y12025M S2080M4VCL1-220 4000K 30 CRI/93-10-18P40-0-236 OR EQUIVALENT	LED	4350W	-	112	-	112	PENDANT CEILING	18" HANGAR LED FIXTURE, UL LISTED, WIDE LENS, 12,000 LUMENS, UL DAMP LOCATION, ALUMINUM HOUSING WITH TEMPOREX LENS.
DW	LITHONIA 1821Y12025M S2080M4VCL1-220 4000K 30 CRI/93-10-18P40-0-236 - WET LABLES OR EQUIVALENT	LED	4000W	-	112	-	112	PENDANT CEILING	18" HANGAR LED FIXTURE, UL LISTED, WIDE LENS, 12,000 LUMENS, WET LOCATION LABELED, ALUMINUM HOUSING, SHATTERPROOF LENS.
E	LITHONIA 1821Y12025M S2080M4VCL1-220 4000K 30 CRI/93-10-18P40-0-236 OR EQUIVALENT BY GUARDCO OR KIM	LED	4000W	-	47	-	47	WALL	DARK BRONZE DIE CAST ALUMINUM HOUSING, FULLY GASKETED DIE CAST ALUMINUM DIE CAST AC OPTIC LENS, TYPE IV DISTRIBUTION UL WET LOCATION LABELED.
F	1027MAY EVO35-16-6A-R40-0-0 OR EQUIVALENT BY HOKU, OR KURT VERBEN	LED	3000W	-	30	-	30	FLUSH CEILING	6" ROUND OPEN DOWNLIGHT, LOW PROFILE, 12000 LUMENS, STEEL HOUSING BRANDED WHITE ENAMEL FINISH, PAINTED AFTER FABRICATION, AC OPTIC REFRACTIVE REFRACTOR WITH LIGHT DIFFUSION CONTROLS, CSA CERTIFIED, PROVIDE MOUNTING HARDWARE FOR GRID OR DRY WALL CEILING PER REFLECTED CEILING PLANS.
G	WIP-17386-C-6-URF7686PC100-0-REV 06/2016 DRIVER	LED	3000W	-	214	-	214	WALL	DIE CAST ALUMINUM HOUSING, WALL MOUNTED LED LIGHT WITH UL WET LOCATION LABEL.
H	WIP-17386-C-6-URF7686PC100-0-REV 06/2016 DRIVER	LED	3000W	-	214	-	214	WALL	DIE CAST ALUMINUM HOUSING, WALL MOUNTED LED LIGHT WITH UL WET LOCATION LABEL.
SA	LITHONIA 1821Y12025M S2080M4VCL1-220 4000K 30 CRI/93-10-18P40-0-236 OR EQUIVALENT BY GUARDCO OR KIM	LED	3800W	-	106	-	106	ROUND POLE	LED PARAWING LOT LUMINAIRE WITH 20" ROUND PRINTED ALUMINUM POLE, ON 3P HIGH PARAWING BASE.
X	LITHONIA 1821Y12025M S2080M4VCL1-220 4000K 30 CRI/93-10-18P40-0-236 OR EQUIVALENT	LED	3800W	-	7	-	7	CEILING WALL	DIE CAST ALUMINUM EXIT SIGN, SINGLE OR DOUBLE FACED AS INDICATED ON PLANS, WHITE HOUSING WITH REFLECTOR, APPROX 48 INDIATED.

LUMINAIRE SCHEDULE NOTES:

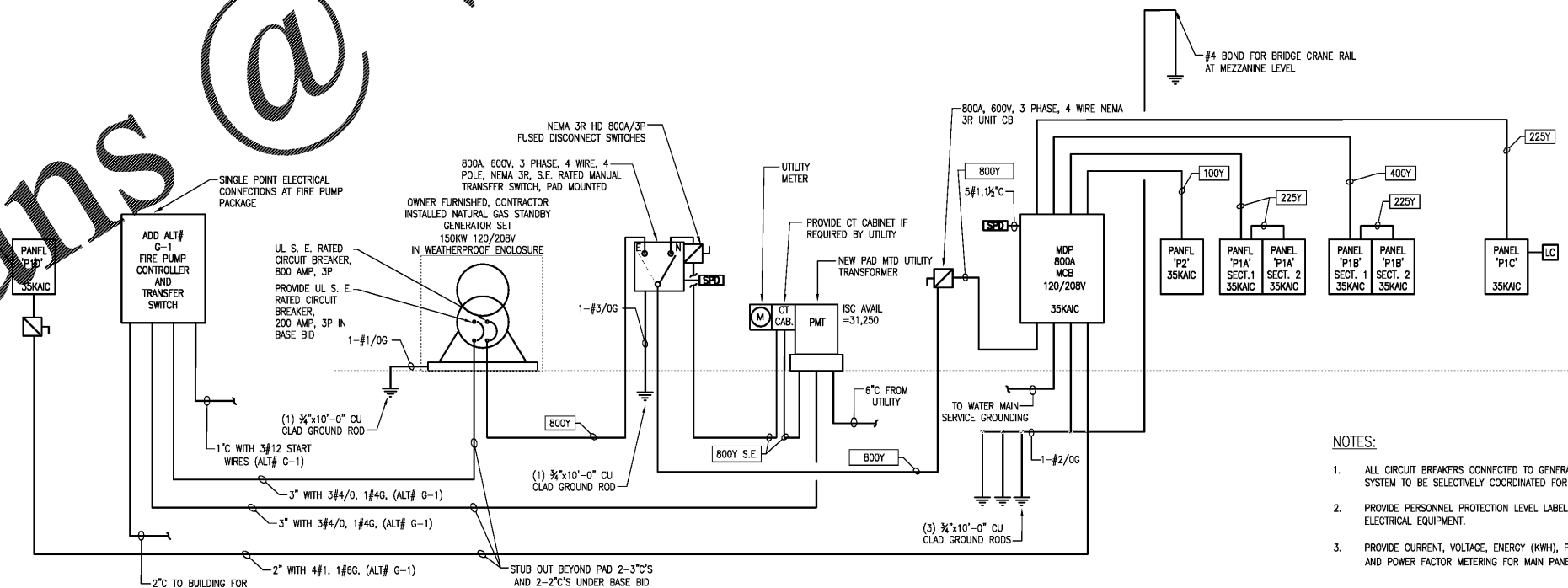
ABBREVIATIONS:
 DCK = CONSTANT VOLTAGE AUTOTRANSFORMER (PLUSE START)
 DTT = DOUBLE TWIN TUBE COMPACT FLUORESCENT
 DM = DIMMABLE BALLAST
 EB = ELECTRONIC BALLAST
 EEB = ELECTRONIC ENERGY SAVING BALLAST
 EESD = ELECTRONIC STEPPED DIMMING BALLAST
 HFF = HIGH POWER FACTOR
 PD = PROGRAMMED START
 TET = TWIN TUBE COMPACT FLUORESCENT
 LED = LIGHT EMITTING DIODE

NOTES:
 1. VERIFY LUMINAIRE FINISH COLOR WITH ARCHITECT AND OWNER.
 2. COORDINATE MOUNTING WITH CEILING TYPE.
 3. PROVIDE ALL NECESSARY SUPPORT HARDWARE AND ADAPTERS FOR EACH LUMINAIRE.
 4. PROVIDE DIMMING CONTROLS FROM SAME MANUFACTURER AS DIMMED BALLAST CONTROLLER.
 5. COORDINATE VOLTAGE OF LUMINAIRE WITH CIRCUIT VOLTAGE. PROVIDE 30% TAP BALLASTS.
 6. PROVIDE 30 MINUTE FULL LIGHT OUTPUT BATTERY BACK-UP FOR ALL EXIT SIGNS AND "RECESSED" LUMINAIRES AS SHOWN ON PLANS.

LOAD SUMMARY	
LOAD TYPE	KW
LIGHTING	11.4
RECTIFIER	14.4
HVAC	5.2
MOTORS	103.4
SHOP EQUIPMENT	68.1
TOTAL LOAD:	202.5 KVA
125% SPARE CAPACITY	109 A
	545A

FEEDER SCHEDULE	
3 PHASE CIRCUITS + NEUTRAL + GROUND	
SYMBOL	MINIMUM SIZE CONDUCTORS & CONDUIT
100Y	4#3, 1#6G; 1 1/4" C
150Y	4#1/0, 1#6G; 2" C
200Y	4#3/0, 1#6G; 2" C
225Y	4#4/0, 1#4G; 2 1/2" C
250Y	4#250KCMIL, 1#4G; 3" C
300Y	3-350 KCMIL, 1#4G; 3" C
400Y	2(3#3/0, 1#3G; 2" C)
600Y	2(3-350 KCMIL, 1 #10; 3" C)
800Y	4(4 #4/0 KCMIL, 1 #1/0G; 2" C)
1000 Y	3(3-500 KCMIL, 1-250 KCMIL N, 1#2/0G; 4" C)
1200Y	4 SETS (4-350 KCMIL, 1#3/0G, 4" C)
800Y S.E.	3 SETS (4-300 KCMIL, 4" C) ROUTE AT 36 INCHES BELOW FINISHED GRADE TO SERVICER POINT AS DIRECTED BY THE LOCAL POWER UTILITY COMPANY.

Order Plans @



1 ELECTRICAL POWER RISER DIAGRAM
SCALE: NONE

- NOTES:
- ALL CIRCUIT BREAKERS CONNECTED TO GENERATOR POWER SYSTEM TO BE SELECTIVELY COORDINATED FOR RELIABILITY.
 - PROVIDE PERSONNEL PROTECTION LEVEL LABELING ON ALL ELECTRICAL EQUIPMENT.
 - PROVIDE CURRENT, VOLTAGE, ENERGY (KWH), POWER (KW) AND POWER FACTOR METERING FOR MAIN PANELBOARD 'MDP'

BIDDING DOCUMENTS

DESIGNED BY: FACILITIES DESIGN ARCHITECTS & ENGINEERS

CONSULTANT: DEVITA

PROJECT TITLE: LUMBERTON EQUIPMENT SHOP

STATE CONSTRUCTION ID: 16-12916-01A

ASSET NUMBER: 78-06-00

DATE ISSUED: 12/15/2017

DRAWN BY: MKT

CHECKED BY: MWH

SHEET NO. E0.1