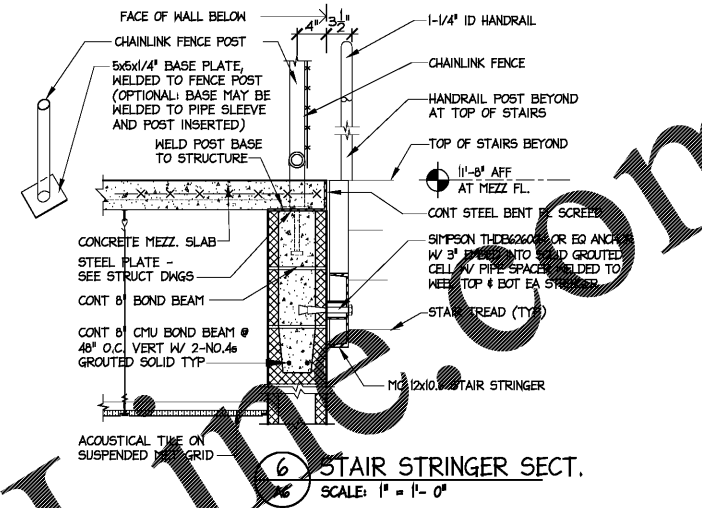
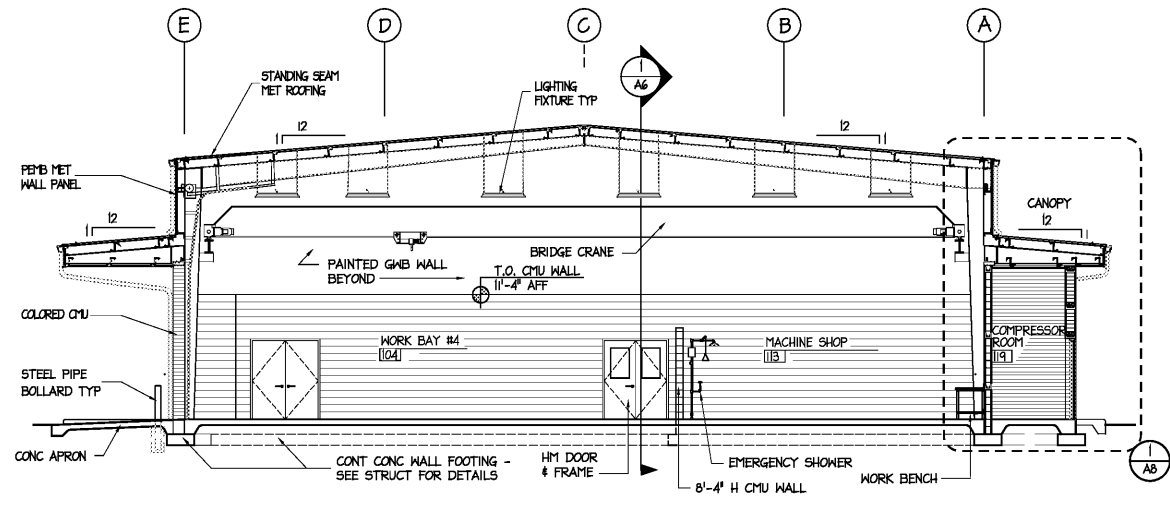


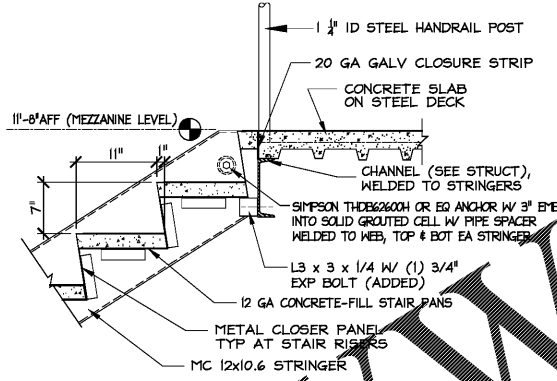
1 BUILDING SECTION  
A6  
SCALE: 1/8" = 1'-0"



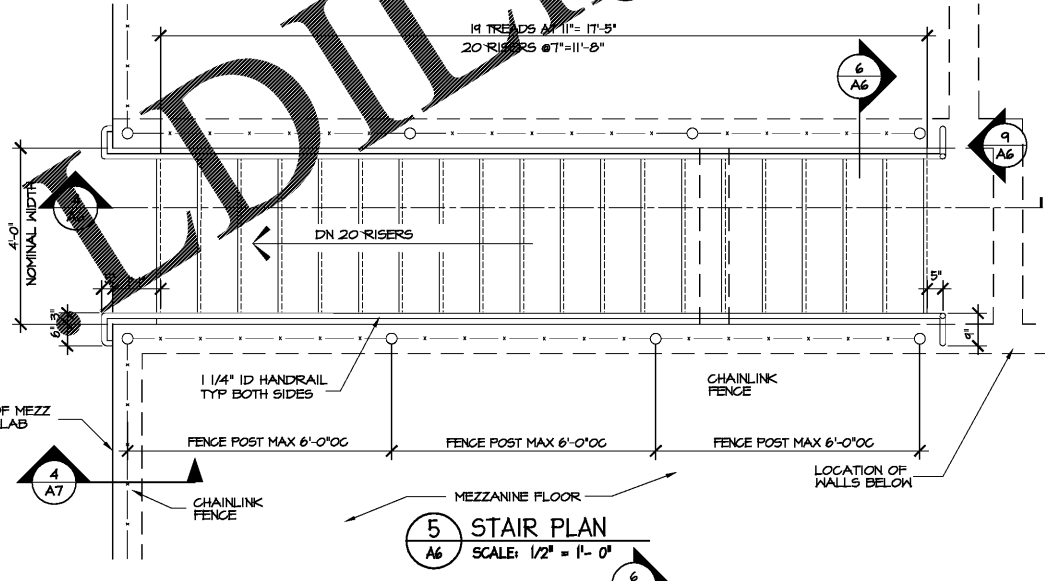
6 STAIR STRINGER SECT.  
A6  
SCALE: 1" = 1'-0"



2 BUILDING SECTION  
A6  
SCALE: 1/8" = 1'-0"

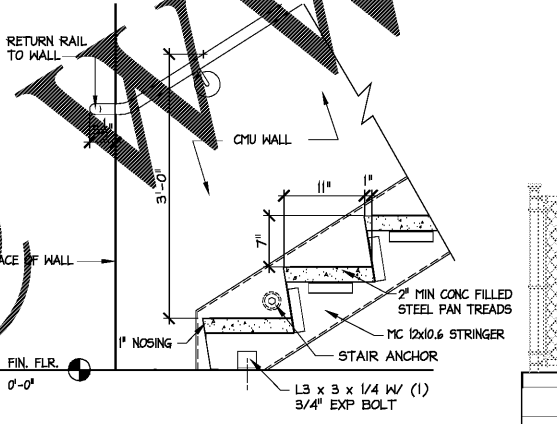


7 STAIR DETAIL @ MEZZANINE  
A6  
SCALE: 1" = 1'-0"

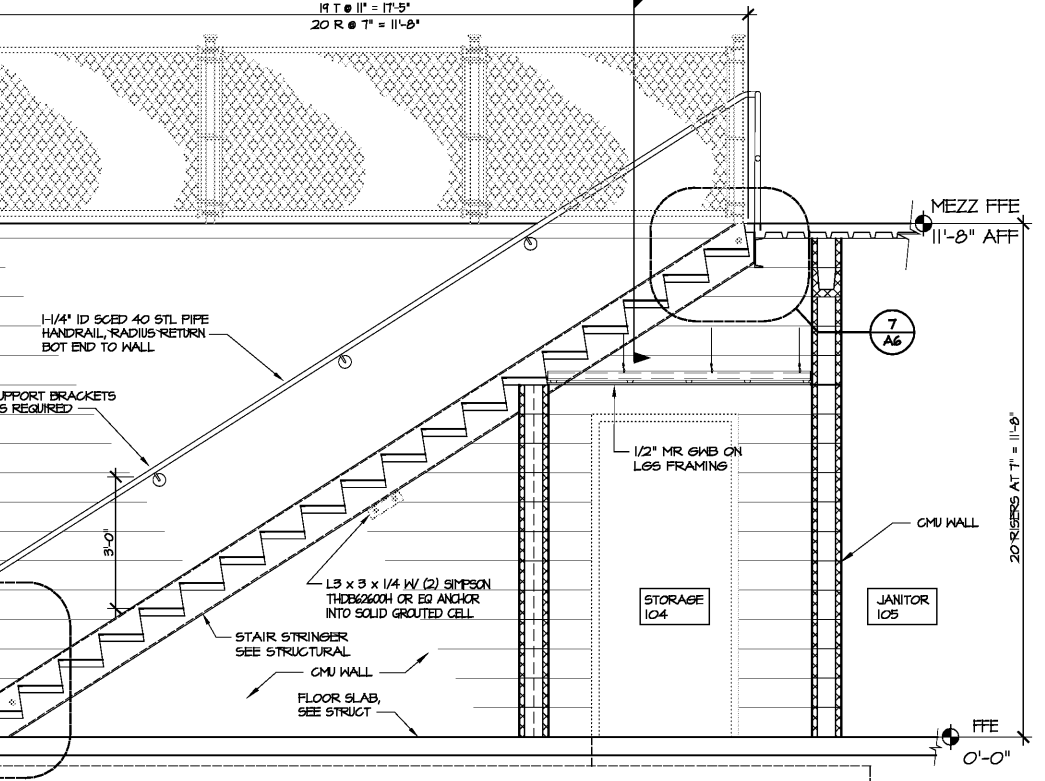


5 STAIR PLAN  
A6  
SCALE: 1/2" = 1'-0"

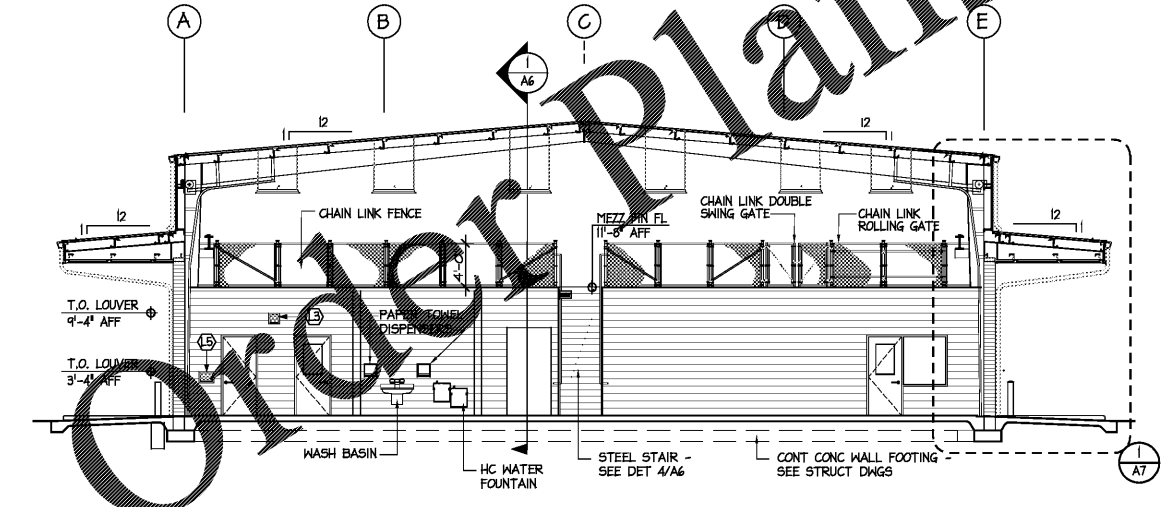
GENERAL NOTES:  
1. GC SHALL COORDINATE ELEVATION OF LIGHTS, HEATERS, & OTHER DEVICES IN WORK BAYS TO BE 8" MINIMUM ABOVE BRIDGE CRANE, SECTIONAL DOOR TRACKS, ETC.. RUN PIPING, CONDUIT, ETC. TIGHT TO BUILDING STRUCTURE.



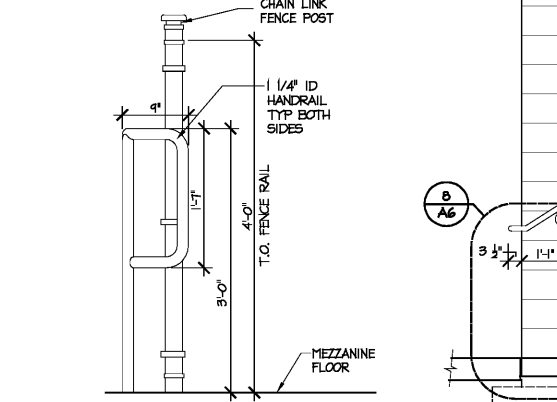
8 STAIR DETAIL @ FLOOR  
A6  
SCALE: 1" = 1'-0"



4 STAIR SECTION  
A6  
SCALE: 1/2" = 1'-0"



3 BUILDING SECTION  
A6  
SCALE: 1/8" = 1'-0"



9 HAND RAIL EXT.  
A6  
SCALE: 1" = 1'-0"

BIDDING DOCUMENTS

DESIGNED BY:  
FACILITIES DESIGN ARCHITECTS & ENGINEERS  
FACILITIES MANAGEMENT DIVISION, HCCO

CONSULTANT:  
POLYMER & POLYMER CONSULTANTS  
P.O. BOX 1000  
SOUTH WILMINGTON, STREET  
PHONE: 910/717-4640 FAX: 910/715-0889

DRAWING TITLE: BUILDING SECTIONS & DETAILS

PROJECT TITLE: LUMBERTON EQUIPMENT SHOP  
LUMBERTON HIGHWAY DIVISION 6  
NC DOT HIGHWAY DIVISION 6

872 NC 7TH HIGHWAY  
LUMBERTON, NORTH CAROLINA 28880

STATE CONSTRUCTION ID.# 16-12916-01A  
ASSET NUMBER: 78-06-00  
REVISIONS NO. DATE

DATE ISSUED: 12/16/2017  
DRAWN BY:  
CHECKED BY:  
SHEET NO.

A6