



DESIGNED BY:
FACILITIES DESIGN
ARCHITECTS & ENGINEERS
FACILITIES MANAGEMENT DIVISION, HICKORY



CONSULTANT:

DRAWING TITLE / DESCRIPTION:
EXTERIOR ELEVATIONS

PROJECT TITLE:
LUMBERTON EQUIPMENT SHOP
LUMBERTON HIGHWAY DIVISION 6

STATE CONSTRUCTION
ID.# 16-12916-01A

ASSET NUMBER:
CO. SITE BLDG.
78 - 06 - 00

REVISIONS NO.	DATE

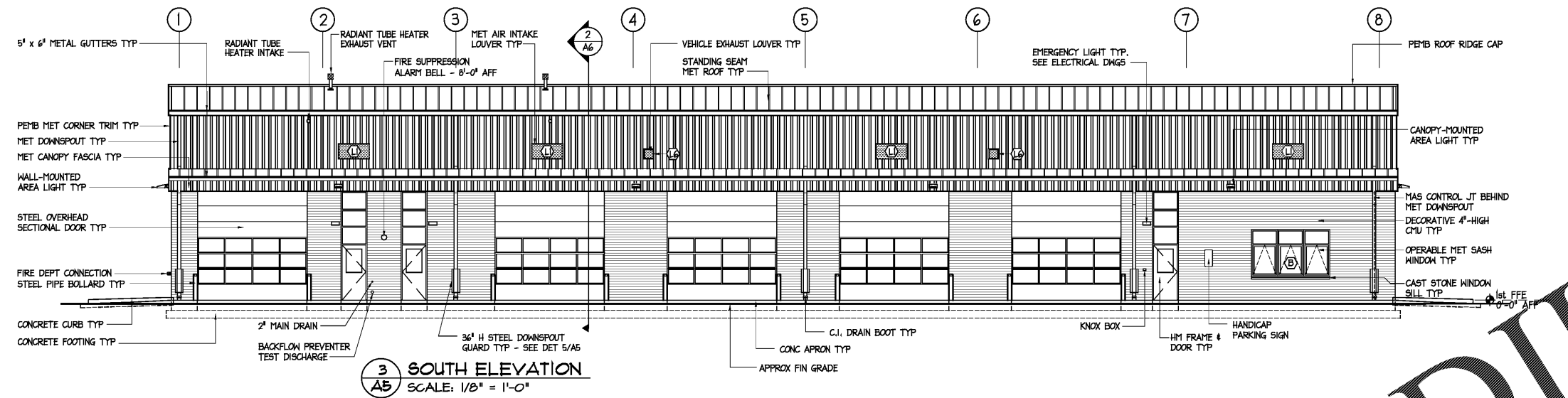
DATE ISSUED: 12/16/2017
DRAWN BY:
CHECKED BY:

SHEET NO.

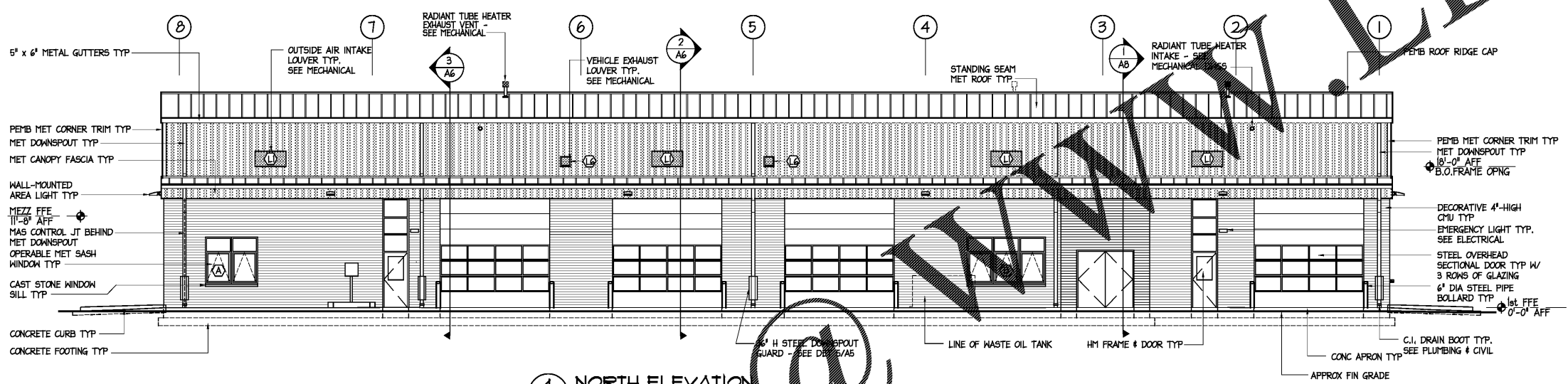
A5

GENERAL NOTES:

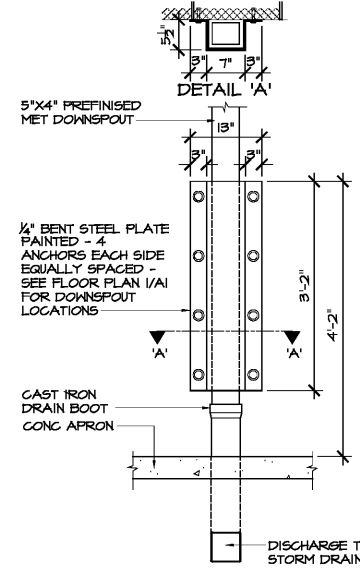
- GC SHALL PROVIDE ALL ROOFING ACCESSORIES AND TRIM AS REQUIRED FOR COMPLETE SYSTEM. GC SHALL OBTAIN ALL PEMB WALL AND ROOFING COMPONENTS FROM THE SAME MANUFACTURER. INSTALL ALL COMPONENTS PER MANUFACTURER'S INSTRUCTIONS. PROVIDE MANUFACTURER'S WARRANTY FOR METAL ROOFING PER SPECIFICATIONS.
- GC SHALL PROVIDE ALL ROOF & WALL FLASHING ASSEMBLIES REQUIRED FOR ALL PENETRATING ITEMS. FLASHING MATERIALS SHALL BE COMMERCIAL GRADE AND SHALL BE COMPATIBLE WITH STANDING SEAM METAL ROOFING & METAL WALL PANELS PROVIDED.
- ALL METAL BUILDING RUNNING TRIM SHALL CONFORM TO SNAGNA STANDARDS. TRIM LAP JOINTS ARE NOT ACCEPTABLE. TRIM SHALL BE LONGEST PRACTICAL LENGTHS. JOINTS SHALL BE BUTTED, REINFORCED, & SEALED PER SNAGNA DETAILS.
- ALL METAL TRIM & EXPOSED FLASHING COMPONENTS SHALL MATCH ADJACENT METAL PANELS FOR MATERIAL & COLOR UNLESS OTHERWISE NOTED. COLORS SHALL BE SELECTED BY ARCHITECT FROM MANUFACTURER'S FULL RANGE OF COLORS.
- METAL LOUVERS: COLORS AS SELECTED BY ARCHITECT FROM MANUFACTURER'S FULL RANGE OF COLORS.



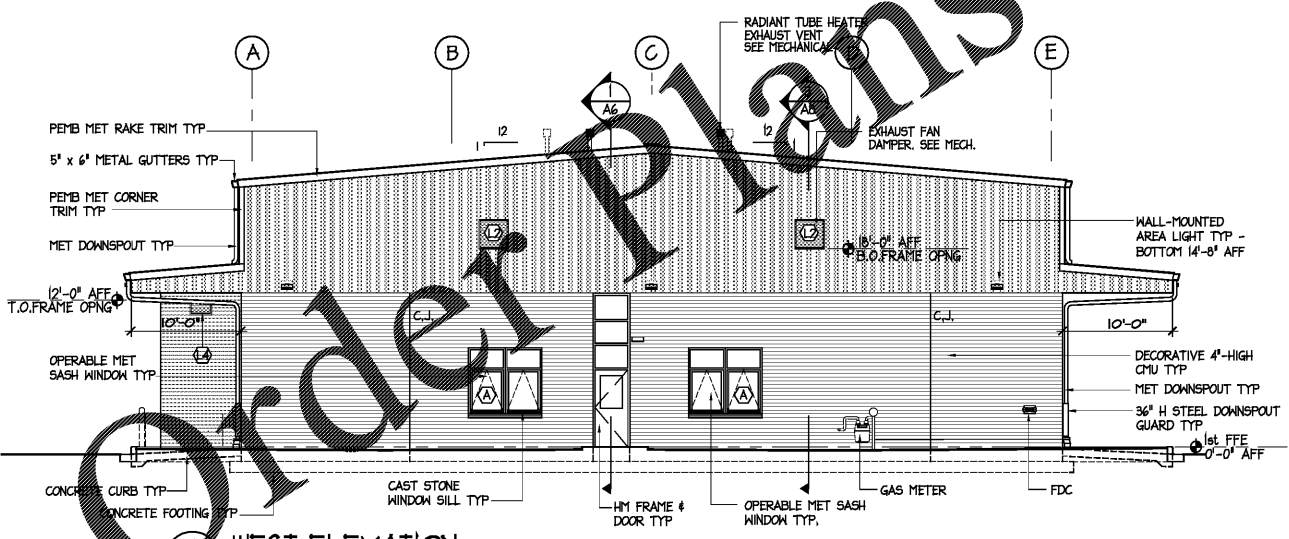
3 SOUTH ELEVATION
SCALE: 1/8" = 1'-0"



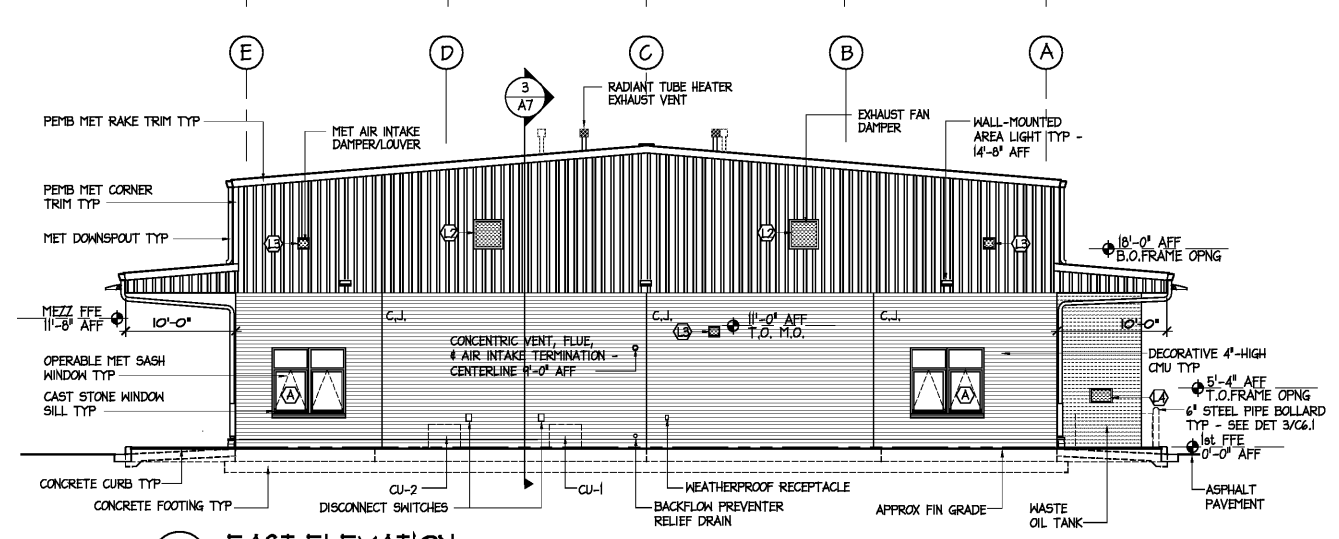
4 NORTH ELEVATION
SCALE: 1/8" = 1'-0"



5 DOWNSPOUT GUARD DETAIL
SCALE: 3/4" = 1'-0"



1 WEST ELEVATION
SCALE: 1/8" = 1'-0"



2 EAST ELEVATION
SCALE: 1/8" = 1'-0"

Order Plans