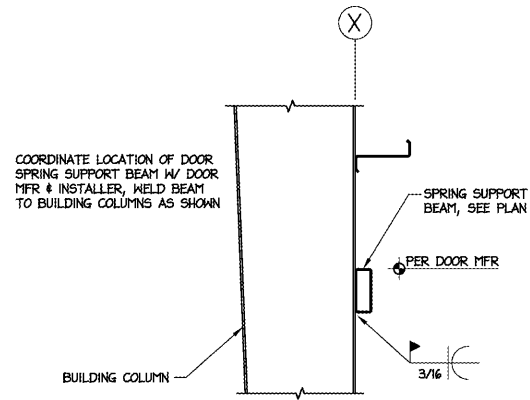
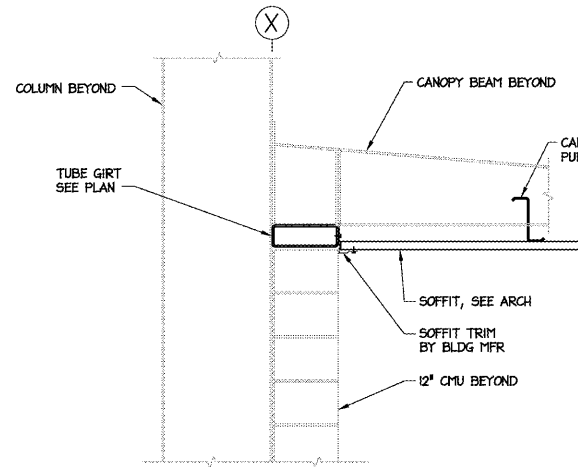


NOTES:

- DESIGN METAL BLDG FOR 3 PSF COLLATERAL LOAD, OR ACTUAL EQUIPMENT WEIGHT, WHICHEVER IS GREATER. COORDINATE W/ MECH & PLUMBING PLANS.
- DESIGN METAL BLDG FOR 3 PSF SPRINKLER LOAD IN ADDITION TO THE COLLATERAL LOAD. COORD W/ SPRINKLER SYSTEM DESIGN.
- MAXIMUM PRELIMINARY CRANE LOADS ARE GIVEN IN DETAIL 2/53. VERIFY ACTUAL LOADS W/ CRANE MFR.
- COORDINATE LOCATION OF CRANE RAIL ELECTRIFICATION & POWER FEED W/ OWNER & ELECTRICAL CONTRACTOR. GC COORD REQUIRED CRANE CLEARANCES W/ ALL TRADES.
- SEE SHEET G2 FOR DESIGN CRITERIA FOR PRE-ENGINEERED COMPONENTS & SYSTEMS.
- SEISMIC TRANSVERSE DIRECTION: STEEL SYSTEMS NOT SPECIFICALLY DETAILED FOR SEISMIC RESISTANCE, W/ R = 3 PER TABLE 12.2-1 OF ASCE 7-05.
- SEISMIC LONGITUDINAL DIRECTION: ORDINARY REINFORCED MASONRY SHEAR WALLS, W/ R = 2.0 PER TABLE 12.2-1 OF ASCE 7-05.
- LIMIT HORIZONTAL DRIFT TO H/200.
- END WALLS ARE NOT EXPANDABLE.
- ALL STRUCTURAL STEEL SHALL BE SHOP PRIMED. GC TO PAINT ALL EXPOSED STRUCTURAL STEEL, SEE ARCH.
- HOLD FINAL STUD 1" OFF THE INSIDE FACE OF WALL GIRTS. DO NOT ATTACH STUD OR DRYWALL TO WALL GIRTS. EXTEND DRYWALL BEYOND LAST STUD TO INSIDE FACE OF GIRTS.



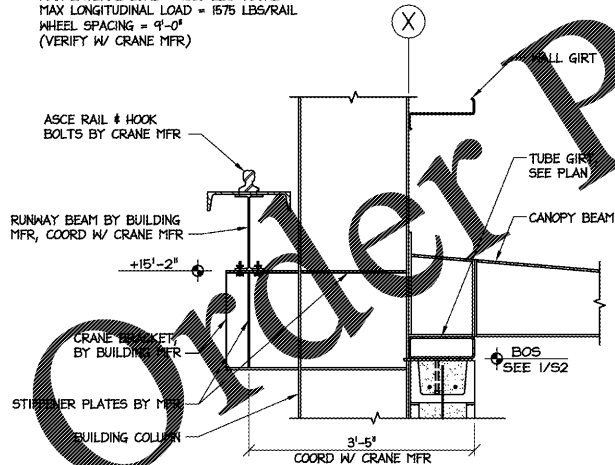
4 O/H DOOR SPRING SUPPORT
S3 SCALE: 3/4" = 1'-0"



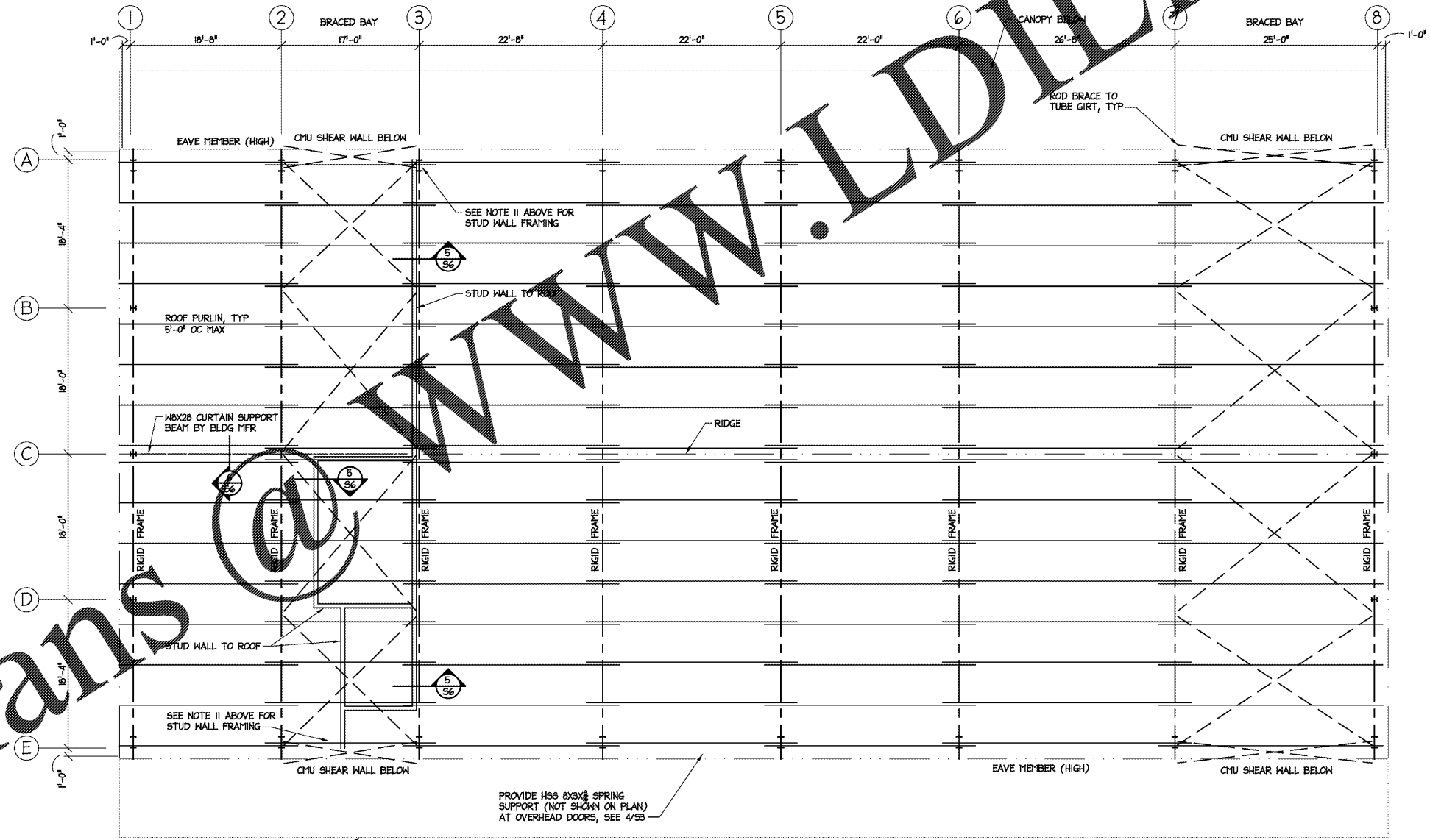
3 TUBE GIRTS AT OH DOORS
S3 SCALE: 3/4" = 1'-0"

CRANE LOADS:
MAX WHEEL LOAD = 8661 LBS
(INCLUDES 10% REQ'D INCREASE)
MAX LATERAL LOAD = 1350 LBS TOTAL
MAX LONGITUDINAL LOAD = 1575 LBS/RAIL
WHEEL SPACING = 9'-0"
(VERIFY W/ CRANE MFR)

SEE ARCH FOR EAVE & FRAME HEIGHTS, VERIFY ADEQUATE CLEARANCE ABOVE RAIL FOR CRANE W/ CRANE MFR, COORD W/ OVERHEAD DOOR TRADES



2 CRANE RAIL SUPPORT
S3 SCALE: 3/4" = 1'-0"



1 ROOF FRAMING PLAN
S3 SCALE: 1/8" = 1'-0"



DESIGNED BY:
MICHAEL D. MONTEALEGRE
FACILITIES DESIGN ARCHITECTS & ENGINEERS
FACILITY MANAGEMENT DIVISION, INCORP.
1 SOUTH WELLSINGTON STREET
PALMER, NORTH CAROLINA 27051
PHONE 919/707-4660 FAX 919/716-0889



CONSULTANT:

DRAWING TITLE / DESCRIPTION:
ROOF FRAMING PLAN
FRAMING DETAILS

PROJECT TITLE:
Lumberton Equipment Sub-Shop
HIGHWAY DIVISION 6, MCDOT
ROBESON COUNTY, NORTH CAROLINA

STATE CONSTRUCTION ID.# 16-12916-01A

ASSET NUMBER:
CO. # SITE # BLDG.#
78 - 06 - 00

REVISIONS
NO. DATE

DATE ISSUED: 12-15-17
DRAWN BY: MEM
CHECKED BY: MEM

SHEET NO.

S3