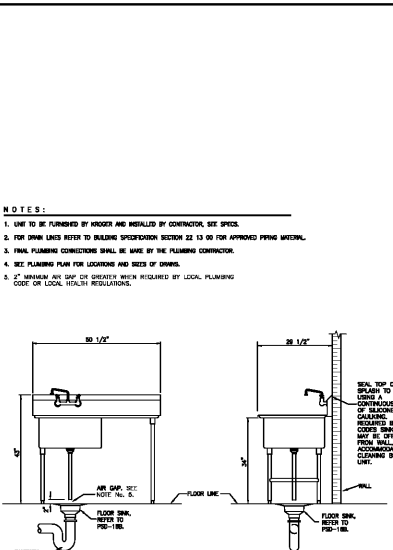
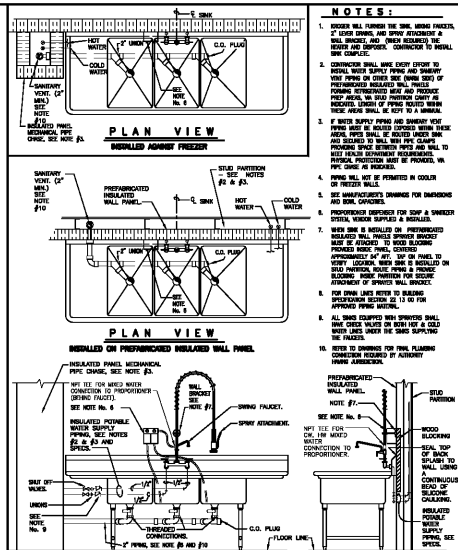


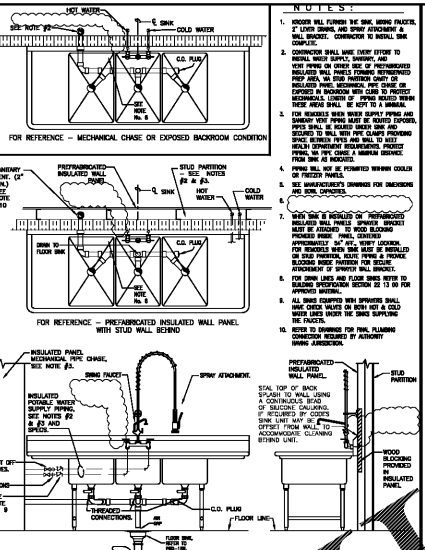
CONDENSATE DRAIN DETAIL
DATE: 11/15/17
SCALE: NONE
DRAWN: ZAW



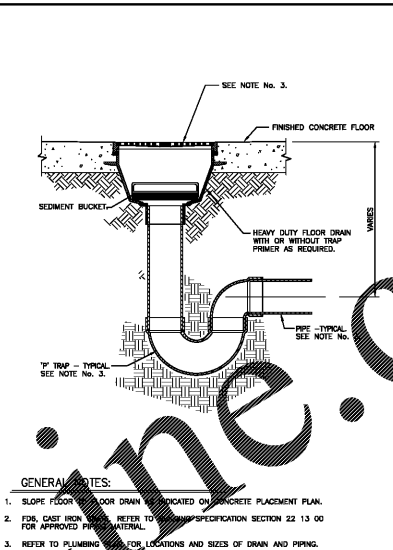
1-COMPARTMENT SINK
DATE: 11/15/17
SCALE: NONE
DRAWN: DCS/ZAW



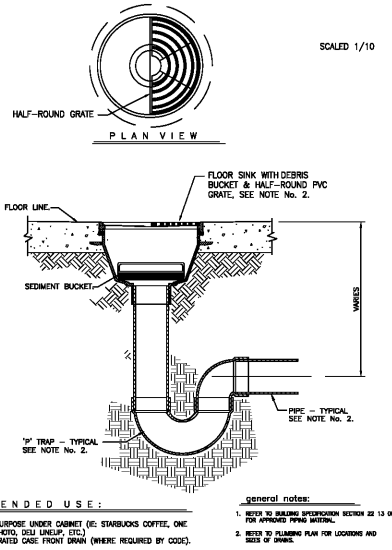
3-COMP UTENSIL WASHING SINK
DATE: 8/9/16
SCALE: NONE
DRAWN: ZAW



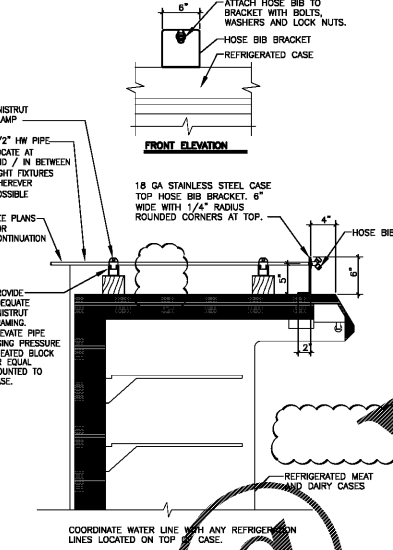
3-COMP CONDITIONING SINK FOR FOOD PREP
DATE: 8/15/16
SCALE: NONE
DRAWN: ZAW



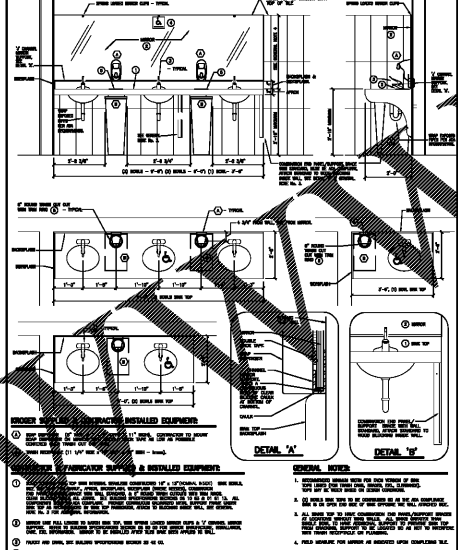
TYPICAL HEAVY DUTY FLOOR DRAIN WITH DEBRIS BUCKET
DATE: 3/13/12
SCALE: NONE
DRAWN: ZAW



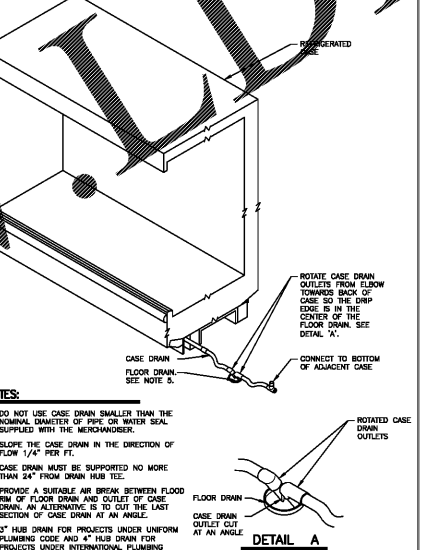
FLOOR SINK WITH DEBRIS BUCKET
DATE: 3/13/12
SCALE: NONE
DRAWN: ZAW



HOSE BIB LOCATION AT REFRIGERATED CASE
DATE: 3/31/17
SCALE: NONE
DRAWN: ZAW



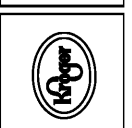
SOLID SURFACE TOPS WITH SINKS
DATE: 11/15/17
SCALE: NONE
DRAWN: ZAW



CASE DRAIN DETAIL
DATE: 10/11/12
SCALE: NONE
DRAWN: ZAW

ROBERTSON LOIA ROOF ARCHITECTS & ENGINEERS
3460 Peachtree Dunwoody Road, Suite 075, Alpharetta, Georgia 30005
770-319-0745

THIS REPRODUCTION IS NOT A CERTIFIED DOCUMENT



Kroger L-407 - Remodel
2101 RICHMOND ROAD
LEXINGTON, KY
The Kroger Company
1600 Ormsby Station Court, Louisville, KY 40223

REVISIONS

NO.	DESCRIPTION

SHEET TITLE: KROGER STANDARD DETAILS
DATE: 01-25-18
PROJECT NUMBER: 17-125
SHEET NUMBER: P5.1

Order Plans