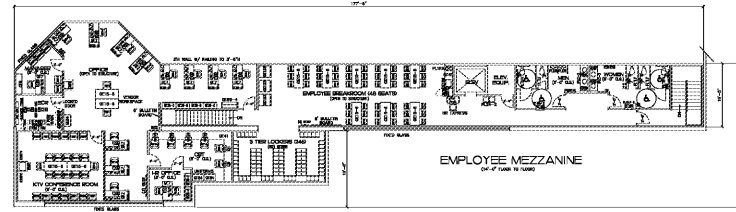


**COLOR KEY**

- EXISTING FIXTURES
- RELOCATED FIXTURES
- NEW FIXTURES
- FIXTURES TO BE REMOVED

NO.	DESCRIPTION
1	...
2	...
3	...
4	...
5	...
6	...
7	...
8	...
9	...
10	...
11	...
12	...
13	...
14	...
15	...
16	...
17	...
18	...
19	...
20	...
21	...
22	...
23	...
24	...
25	...
26	...
27	...
28	...
29	...
30	...
31	...
32	...
33	...
34	...
35	...
36	...
37	...
38	...
39	...
40	...
41	...
42	...
43	...
44	...
45	...
46	...
47	...
48	...
49	...
50	...
51	...
52	...
53	...
54	...
55	...
56	...
57	...
58	...
59	...
60	...
61	...
62	...
63	...
64	...
65	...
66	...
67	...
68	...
69	...
70	...
71	...
72	...
73	...
74	...
75	...
76	...
77	...
78	...
79	...
80	...
81	...
82	...
83	...
84	...
85	...
86	...
87	...
88	...
89	...
90	...
91	...
92	...
93	...
94	...
95	...
96	...
97	...
98	...
99	...
100	...

PICTURES NOT IN EPD



**FINAL PLAN**  
**126K**

**WITHIN THE WALLS**  
**L-407**  
3101 RICHMOND RD  
LEXINGTON, KY

ISSUED FOR PERMIT	12/15/2017
ORIGINAL PLAN DATE	4/19/2017
DRAWN	A. O'CONNOR
CHECKED	A. SCHNEIDERMAN
DATE	5/30/2017
NO	12/15/2017
REVISED PLOTTED SCALE	
1/16"=1'-0"	
BUILDING STATS	
TOTAL SHELFING	6,538 LF
SALES AREA	83,391 SF
BASE STORE	115,508 SF
MEZZANINE	4,258 SF
DOCK / UTILITY	6,853 SF
GROSS BUILDING	126,467 SF
REVISION	FIXTURE PLAN
FIXTURE PACKAGE	Not Applicable
NO.	L-407
REV.	F1
GND PLAN L407P1.DWG	



**LOUISVILLE (NEW) BANNER**  
1600 ORMSBY STATION C  
LOUISVILLE, KY  
PHONE: (502) 423-4962  
FAX: (502) 423-7500

**GENERAL NOTES:**  
ALL EQUIPMENT IS TO BE CONSIDERED EXISTING UNLESS NOTED OTHERWISE.  
THE CONTRACTOR SHALL BE RESPONSIBLE FOR THE COMPLETE RESPONSIBILITY OF THE EQUIPMENT.  
FOR THIS PLAN WAS TAKEN FROM ARCHITECTURAL PLANS.  
THE CONTRACTOR SHALL VERIFY THE LOCATION OF ALL EQUIPMENT.  
THE CONTRACTOR SHALL VERIFY THE LOCATION OF ALL EQUIPMENT.  
THE CONTRACTOR SHALL VERIFY THE LOCATION OF ALL EQUIPMENT.  
THE CONTRACTOR SHALL VERIFY THE LOCATION OF ALL EQUIPMENT.

ORDER PLANS @ ALWAYS ONLINE.COM