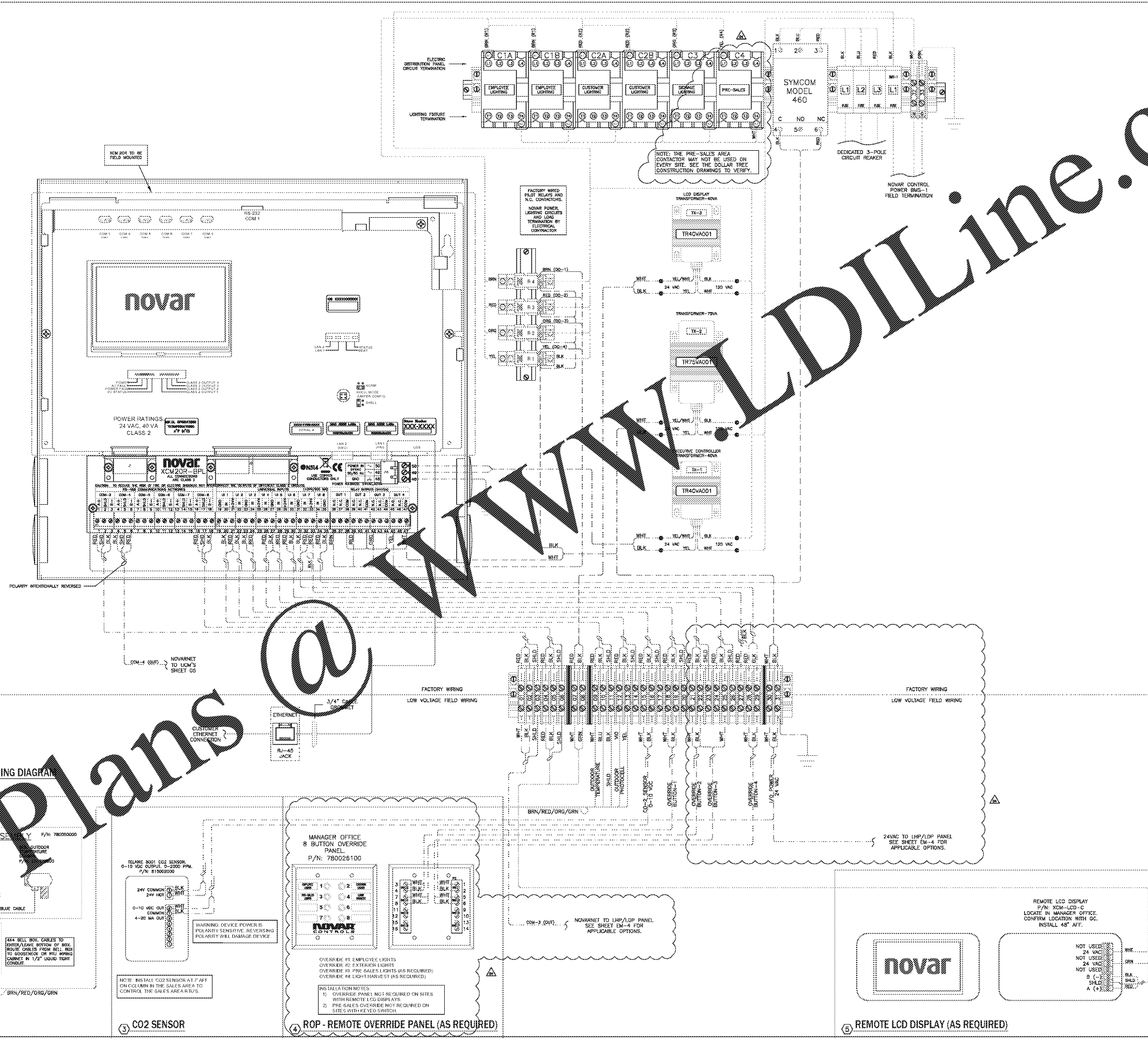
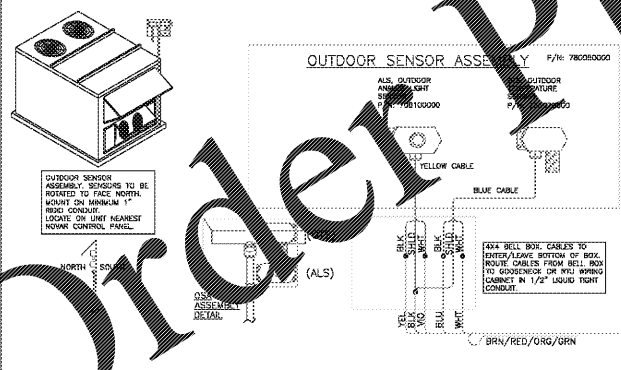


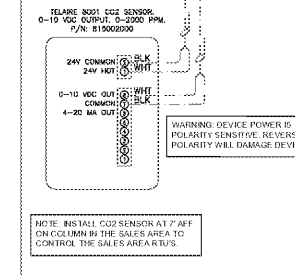
UPDATED 06/29/16



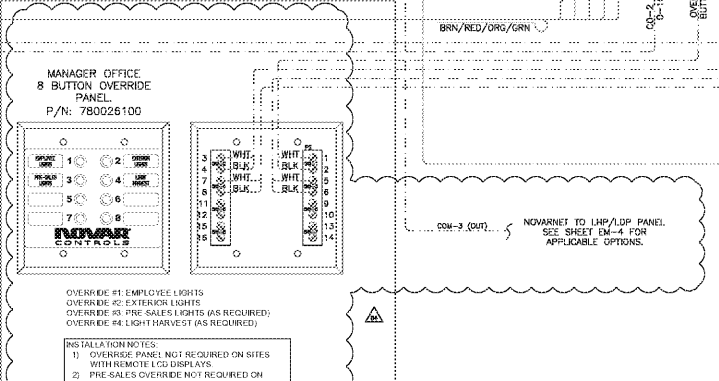
1 RCP PANEL - NOVAR OPUS XCM20R WIRING DIAGRAM



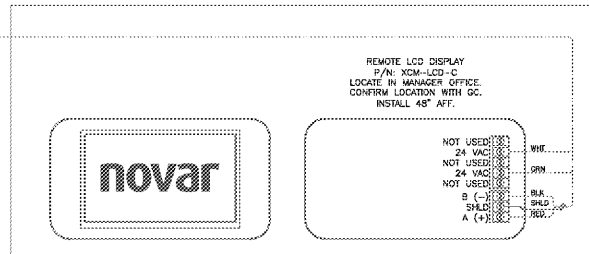
OSA - OUTDOOR SENSOR ASSEMBLY



3 CO2 SENSOR



4 ROP - REMOTE OVERRIDE PANEL (AS REQUIRED)



5 REMOTE LCD DISPLAY (AS REQUIRED)

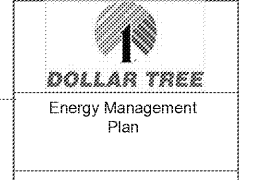
| NO. | DATE | DESCRIPTION |
|-----|----------|--|
| 1 | 10/15/15 | Added RCP LDP wiring |
| 2 | 11/13/15 | Changed C4 contact to Light |
| 3 | 05/09/16 | Override Button 3 Change |
| 4 | 05/09/16 | Override Button 3 Change |
| 5 | 05/09/16 | Added Pre Sales A.L. Changes, mfg installation notes |

- LEGEND**
- NOTE - THIS SHEET
 - DETAIL NUMBER
 - DETAIL: DEVICE ID NUMBER OVER DEVICE CATEGORY NUMBER
 - WIRE ID
 - DESIGNATED WIRE SPLICE
 - SECURED SPARE CONDUCTOR FOR FUTURE USE

- WIRE/CABLE TYPES**
- ALL TYPES MAY NOT APPLY.
- 22/2 AWG SHIELDED GROUND • BELDEN 8761
 - 22/3 AWG SHIELDED GROUND • WINDY CITY 004330
 - 18/2 AWG SHIELDED GROUND • HONEYWELL 3320 10 D1
 - 18/9 AWG STRANDED CABLE PLENUM RATED
 - LINE VOLTAGE WIRING IN CONDUIT
 - 20/2 AWG SHIELDED AND 18/2 AWG • BELDEN 8155
 - 12 TO 18 AWG STRANDED WIRE • THRL
- * OR EQUIVALENT.

- LOW VOLTAGE CABLING REQUIREMENTS:**
- WIRE SPLICES ARE UNACCEPTABLE.
 - THE COMMUNICATIONS BLESS WILL BE TERMINATED AT THE CONTROLLER.
 - INSTALLED NEATLY AND CONCEALED WITHIN THE BUILDING STRUCTURE.
 - SLEEVED IN CONDUIT UP TO COLING OR BAR JOIST.

novar
 6060 Rockside Woods Blvd.
 Cleveland, OH 44131
 216.682.1600
 www.novar.com



| | |
|--------------------------------------|------------------------------|
| Application: Eng: R. James | Project/Program Mgr: CR / GN |
| Date: 11/13/2014 | ISC No: U- |
| Interface Panel & XCM Wiring Details | |
| Scale: N.T.S. | Dep. No: EM-2 |

Order Plans @ WWW.DILine.com