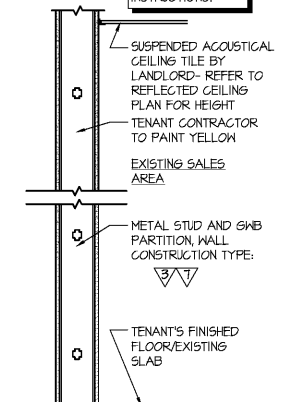
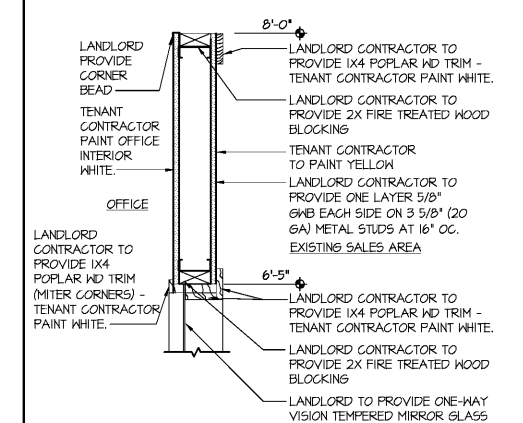


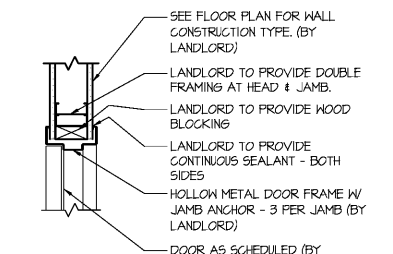
WALL SECTION - CONSTRUCTION TYPE 2
SCALE: 1"=1'-0"
A4



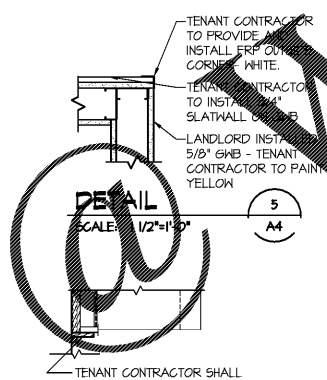
WALL SECTION - CONSTRUCTION TYPE 3 & 7
SCALE: 1"=1'-0"
A4



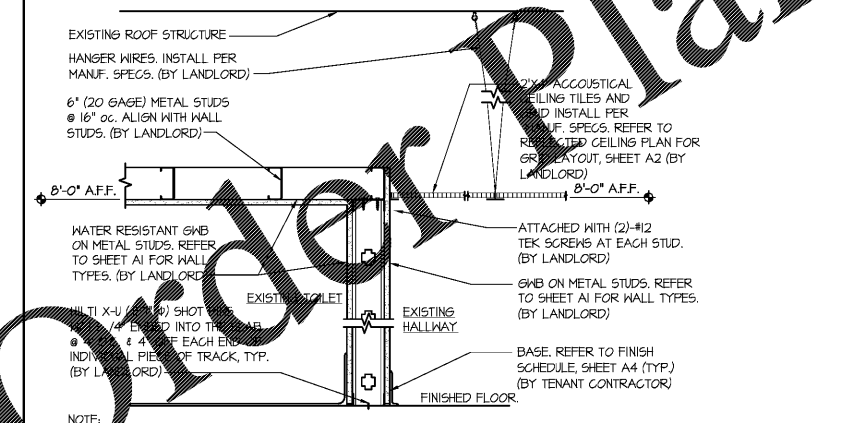
HEAD / JAMB DETAIL 3
SCALE: 1 1/2"=1'-0"
A4



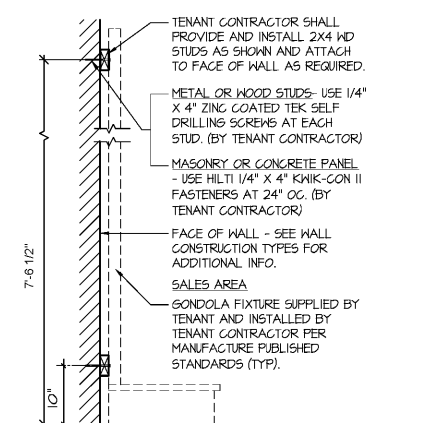
HEAD / JAMB DETAIL 4
SCALE: 1 1/2"=1'-0"
A4



HEAD / JAMB DETAIL 5
SCALE: 1 1/2"=1'-0"
A4



CEILING DETAIL @ EXISTING TOILET/HALLWAY 6
SCALE: 1 1/2"=1'-0"
A4



TYPICAL FIXTURE ATTACHMENT DETAIL 7
SCALE: 1"=1'-0"
A4

FINISH SCHEDULE					
SPACES	FLOORS	BASES	WALLS	CEILINGS	NOTES
EXIST. SALES	CARPET TILE POLISHED CONCRETE	4" VINYL	EXIST. GWB - (T.C.) PAINT YELLOW	EXIST. ACT	12,45,6,9,11,4
EXIST. PRE-SALES	CONCRETE	---	EXIST. GWB	---	8,11,6
EXIST. OFFICE	POLISHED CONCRETE	4" VINYL	EXIST. GWB - (T.C.) PAINT WHITE	---	25,6,9,10,11,4
EXIST. TOILET	EXIST. VGT	EXIST. 4" VINYL	EXIST. GWB - WHITE FRP (BY LL)	EXIST. FR GWB - PAINT WHITE (BY LL)	23,6,7,11,3
EXIST. HALLWAY	POLISHED CONCRETE	4" VINYL	EXIST. GWB - (T.C.) PAINT WHITE	EXIST. ACT	2,4,6,7,11,4
EXIST. EMPLOYEE AREA	CONCRETE	---	EXIST. FR PLYWOOD - (T.C.) PAINT GREEN	---	6,8,5

- FINISH NOTES**
- CARPET TILE: MANUFACTURED BY INTERFACE FLOORING SYSTEMS AND SUPPLIED BY TENANT. INSTALL TILES QUARTER TURNED AND PER TENANT'S CRITERIA. ENTRY TILE: DECO RIB, STYLE #678609100. TENANT'S CONTRACTOR SHALL PREPARE FLOOR SURFACE AND COORDINATE CARPET INSTALLATION W/ CARPET INSTALLER.
 - VINYL COVE BASE: COLOR - BLACK. (VINYL BASE ONLY ON EXPOSED WALLS NOT COVERED BY GONDOLA IN SALES AREA.) COVE BASE TO BE INSTALLED AT MOP SINK ONLY IN THE STOCKROOM.
 - EXISTING 12" X 12" X 3/32" THICK NEUTRAL VGT (VINYL COMPOSITE TILE - BEIGE OR WHITE).
 - PROVIDE 2'-0" X 4'-0" CEILING TILE EQUAL TO ARMSTRONG'S "CORTESA" MINABOARD #161, WHITE, IN A WHITE METAL GRID. (IN AREAS W/ SIGNIFICANT AIR PRESSURE DIFFERENTIALS PROVIDE RETENTION CLIPS TO RETAIN PANELS IN PLACE.) REFER TO SHEET A2 FOR HEIGHT.
 - SLATWALL: 3/4" SLATWALL W/ WHITE MELAMINE FINISH. SEE MANUFACTURER'S DRAWINGS FOR INSTALLATION DETAILS.
 - PAINT COLORS ARE AS FOLLOWS:
WHITE - SHERWIN WILLIAMS PRO 200 LATEX SEMI-GLOSS WHITE W/ B-1 PER GALLON.
YELLOW - "LEMON SORBET" #2019-60. BENJAMIN MOORE PRODUCT 274 EGGSHELL FINISH.
GREEN - "FOREST GREEN" #2047-10. BENJAMIN MOORE PRODUCT 274 EGGSHELL FINISH (EMPLOYEE ROOM WALLS ONLY).
GREEN - "ENVY GREEN" #669-50. SHERWIN WILLIAMS.
TAN - "TRUSTY TAN" #201, BENJAMIN MOORE PRODUCT 274 EGGSHELL FINISH (SALES FLOOR FLOOR TO 2'-0" AFF. HIGHER). (IF SALES FLOOR HAS EXISTING CEILING).
 - PAINT EMPLOYEE AREA WALLS TO 5'-0" AFF "FOREST GREEN".
 - PAINT STOCK ROOM INTERIOR CEILING WHITE. EXTERIOR HALLWAY WALLS WHITE.
 - EXISTING GONDOLA FLOOR TO REMAIN. PATCH AND FINISH AS REQUIRED TO PROVIDE SMOOTH SURFACE.
 - SLATWALL SHALL BE PROVIDED BY TENANT AND INSTALLED BY TENANT'S CONTRACTOR. ALL OTHER FINISHES SHALL BE PROVIDED AND INSTALLED BY TENANT'S CONTRACTOR.
 - PROVIDE PREFORMED COUNTER W/ WHITE HIGH PRESSURE LAMINATE FINISH MOUNT TO WALLS. FILING CABINETS PROVIDED BY TENANT. SEE ENLARGED OFFICE PLAN AND OFFICE ELEVATION.
 - F R P (FIBERGLASS REINFORCED PANEL): IN TOILET ROOM FROM FLOOR TO 6'-0" AFF SHALL BE WHITE COLOR (IN STOCKROOM BEHIND MOP SINK AND UTILITY CABINET ONLY). IN HALLWAY BEHIND DRINKING FOUNTAIN ONLY. FRP ON SALES FLOOR (WHERE NOTED ON PLANS/ELEVATION SHALL BE ALMOND COLOR WITH "J" CHANNEL TRIM CAP AND "H" CHANNEL PANEL CONNECTORS).
 - SHEET VINYL: CLASSIC CORLON SERIES MANUFACTURED BY ARMSTRONG - CONNECTION CORNER "MILAN" #88124 OR EQUAL. SHEET VINYL "LACE" BY INTERAL, 3/8" RADIUS, 6" HIGH COVERED JOINT W/ COVE STRIP AND EXTRUDED ALUMINUM CAP TRIM.
 - VGT (VINYL COMPOSITION TILE) - ARMSTRONG IMPERMEABLE TEXTURE STANDARD EXCELON 5000 BUTTERCREAM YELLOW 12"X12"X1/8" OR EQ.
 - POLISH CONCRETE FLOOR ON SALES HALLWAY AND OFFICE. POLISH CONCRETE FLOOR TO TENANT'S VENDOR. COORDINATE W/ TENANT.
 - PAINT EMPLOYEE AREA WALLS TO 5'-0" AFF "FOREST GREEN".
 - PAINT 6" WIDE BAND ON CONCRETE FLOOR AROUND PERIMETER OF STOCKROOM WITH TWO COATS OF BENJAMIN MOORE "TD BM WHITE" TOUGH SHIELD ACRYLIC GLOSS TY-43. PAINT BAND PRIOR TO PAINTING ANY YELLOW CLEAR FLOOR SPACE AREAS.

DOOR SCHEDULE											
#	DOORS			DETAILS		FR	HDW NOTES	DOOR NOTES			
	W	H	T	MATERIAL	HEAD				JAMB SILL		
100	3'-0"	6'-6"	1 3/4"	EXIST. S.C. WOOD	4/A4	4/A4	---	100A	35/10/11,4		
200	3'-0"	7'-0"	1 3/4"	EXIST. HOLLOW MTL	4/A4	4/A4	---	200B	23,5,7,9,10,11,4		
300	3'-0"	6'-6"	1 3/4"	EXIST. S.C. WOOD	4/A4	4/A4	---	300A	35,6/10/11,4		
400	3'-0"	7'-0"	1 3/4"	EXIST. HOLLOW MTL	---	---	---	400A	3,4,5,6/10/11,2,4		
401	3'-0"	7'-0"	1 3/4"	EXIST. HOLLOW MTL	---	---	---	401C	35,6/10/11,2,4		
500	3'-0"	7'-0"	1 3/4"	EXIST. ALUM/GLASS	---	---	---	500A	13/10/11,3,4		

- FINISH NOTES**
- PROVIDE A SIGN POSTED ON THE EGRESS SIDE, ON OR ADJACENT TO THE DOOR STATING: "THIS DOOR TO REMAIN UNLOCKED WHEN BUILDING IS OCCUPIED." THE SIGN SHALL BE IN LETTERS 1" HIGH ON A CONTRASTING BACKGROUND.
 - NEW DOORS - SUPPLIED BY TENANT W/ A PRE-INSTALLED BRUSHED ALUMINUM COVER PLATE ON SALES AREA SIDE OF THE DOOR. EXISTING DOORS - INSTALL ALUMINUM COVER PLATE (SUPPLIED BY TENANT) ON EXISTING DOORS TO REMAIN.
 - DOOR FRAME AND HINGES ARE EXISTING. PROVIDE AND INSTALL ANY MISSING ITEMS. HARDWARE PER HARDWARE NOTE #5.
 - PROVIDE (1) ONE PEEP HOLE TO VIEW OUT. MOUNT 4'-3" AFF.
 - NEW DOORS AND FRAMES TO BE SEMI-GLOSS ENAMEL PAINT. ALL INTERIOR SURFACES. EXTERIOR DOORS SHALL MATCH EXISTING BUILDING COLOR ON EXTERIOR SURFACES.
 - INSTALL TENANT SUPPLIED SIGNAGE PER DETAIL B/A4.1.
 - REINFORCE JAMBS W/ WOOD BLOCKING.
 - INSTALL TENANT SUPPLIED SIGNAGE THAT READS "EMERGENCY EXIT ONLY."
 - INSTALL TENANT SUPPLIED SIGNAGE THAT READS "EMPLOYEES ONLY."
 - CONTROLS AND OPERATING MECHANISMS WILL BE OPERABLE W/ ONE HAND AND NOT REQUIRE TIGHT GRASPING, PINCHING OR TWISTING OF THE WRIST. THE FORCE REQUIRED TO ACTIVATE CONTROLS OF INTERIOR HINGED DOORS SHALL BE NO GREATER THAN 4 LBS.
 - PROVIDE HARDWARE TO COMPLY W/ ANSI, A117.1.
 - REFER TO DETAIL B/A4.1 FOR DOOR ALARM MOUNTING.
 - INSTALL SIGNAGE PER ELEVATION F/A3.
 - LISTED HARDWARE PER DETAIL B/A4.1. PROVIDE AND INSTALL ANY MISSING ITEMS. HARDWARE PER HARDWARE NOTE #5.

- GENERAL HARDWARE NOTES**
- THRESHOLDS AT EGRESS DOORS SHALL BE NO GREATER THAN 1/2" (MAX) HEIGHT AFF.
 - ALL DOOR HANDLES, PULLS, LATCHES, LOCKS AND OTHER OPERATING DEVICES SHALL BE INSTALLED 34" (MIN) TO 48" (MAX) AFF AND SHALL BE "SINGLE-HANDED" OPERABLE WITHOUT USE OF KEY OR SPECIAL KNOWLEDGE.
 - WHERE EGRESS DOORS ARE USED IN PAIRS, THE UNLATCHING OF THE LEAF SHALL NOT REQUIRE MORE THAN ONE (1) OPERATION AS MENTIONED IN GENERAL HARDWARE NOTE #2 ABOVE.
 - CONTROLS AND OPERATING MECHANISMS SHALL BE LEVER-TYPE (OR EQUAL) PROVIDING OPERATION WITH ONE HAND AND NOT REQUIRE TIGHT GRASPING, PINCHING, OR TWISTING OF THE WRIST. THE FORCE REQUIRED TO ACTIVATE CONTROLS OF INTERIOR HINGED DOORS SHALL BE NO GREATER THAN 5 POUNDS (22.2 N).
 - DOORS EQUIPPED WITH CLOSERS SHALL BE ADJUSTED SO THAT THE SNEEP PERIOD FROM AN OPEN POSITION OF 10 DEGREES WILL TAKE AT LEAST 3 SECONDS TO MOVE TO A POINT 3" FROM THE LATCH MEASURED FROM THE LEADING EDGE OF THE DOOR.
- HW # 100A**
EXIST 1 1/2 PAIR HINGES: STANDARD WEIGHT
INSTALL 1 MECHANICAL PUSH BUTTON LOCK-SET WITH LEVER HANDLE
EXIST 1 CLOSER
EXIST 1 FLOOR STOP
- HW # 200B**
EXIST 3 PAIR HINGES: 4 1/2" HEAVY WEIGHT, BALL BEARING PINS
EXIST 2 CLOSERS WITH HOLD OPEN
EXIST 2 PULL HANDLES (ON STOCKROOM SIDE)
EXIST 1 THRESHOLD (1/4" MAXIMUM HEIGHT)
- HW # 300A**
EXIST 1 1/2 PAIR HINGES: STANDARD WEIGHT
EXIST 1 PRIVACY SET W/ LEVER HANDLE
EXIST 1 CLOSER
EXIST FLOOR/WALL STOP
- HW # 400A**
EXIST 3 PAIR HINGES: 4 1/2" HEAVY WEIGHT, NON-REMOVABLE PINS
EXIST 1 NON-ALARMED, NON-KEYED PANIC BAR DEVICE
EXIST 2 FLUSH BOLTS (ON INACTIVE LEAF)
EXIST 1 DUST PROOF STRIKE
EXIST 1 ALUM THRESHOLD (1/2" MAX HEIGHT)
EXIST 2 SNEEPS
EXIST 1 HEATHER STRIP
EXIST 1 RAIN DRIP
EXIST 1 ASTRAGAL
INSTALL PEEP HOLE
INSTALL STAND ALONE ALARM - REFER TO DOOR ALARM MOUNTING DETAIL (TENANT SUPPLIED)
INSTALL 2 OVER-HEAD HOLDERS/STOPS (TENANT SUPPLIED)
- HW # 401C**
EXIST 1 1/2 PAIR HINGES: STANDARD WEIGHT, NON-REMOVABLE PINS
EXIST 1 NON-ALARMED, NON-KEYED PANIC BAR DEVICE
EXIST 1 CLOSER WITH STOP ARM
EXIST 1 ALUM THRESHOLD (1/2" MAX HEIGHT)
EXIST 1 SNEEP
EXIST 1 HEATHER STRIP
EXIST 1 RAIN DRIP
INSTALL STAND ALONE ALARM - REFER TO DOOR ALARM MOUNTING DETAIL (TENANT SUPPLIED)
- HW # 500A**
EXIST HINGES PER STOREFRONT MANUFACTURER
EXIST 2 PUSH PLATES
EXIST 2 PULL HANDLES
EXIST COMMERCIAL GRADE DEADLOCK W/ THUMB TURN ON SALES SIDE
EXIST 2 CLOSERS
INSTALL KABA CYLINDER (TENANT SUPPLIED)
- NOTE:**
CONTRACTOR SHALL VERIFY CLOSER DOES NOT HAVE A HOLD-OPEN FEATURE ON EXISTING STOREFRONT DOORS. IF CLOSER DOES, THE CONTRACTOR SHALL REPLACE WITH NEW CLOSER.

Order Plans

DOLLAR TREE

SALEM B.T.S.

1511 SCENIC RIVERS BLVD., SALEM, MO 65660

DETAILS, SECTIONS & SCHEDULES

date	project	designed	drawn	checked
06/04/19	39609	kck	kck	DBB
mark	date	description	by	revisions

CASCO
CORPORATION
ARCHITECTURAL FIRM
LICENSE #000324
EXPIRES 12/31/18

MARK S. BROMEIER
LIC #008177
EXPIRES: 12/31/18
PHONE: 314-521-1100

project
DOLLAR TREE
SALEM B.T.S.
1511 SCENIC RIVERS BLVD., SALEM, MO 65660
drawing
DETAILS, SECTIONS & SCHEDULES

A4