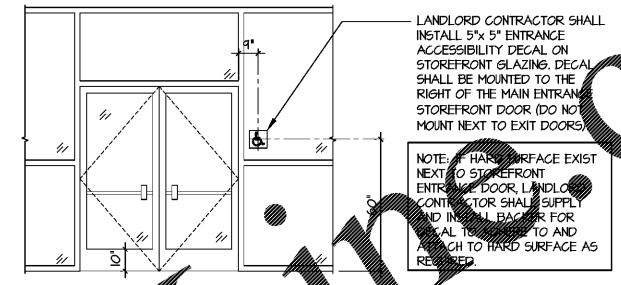
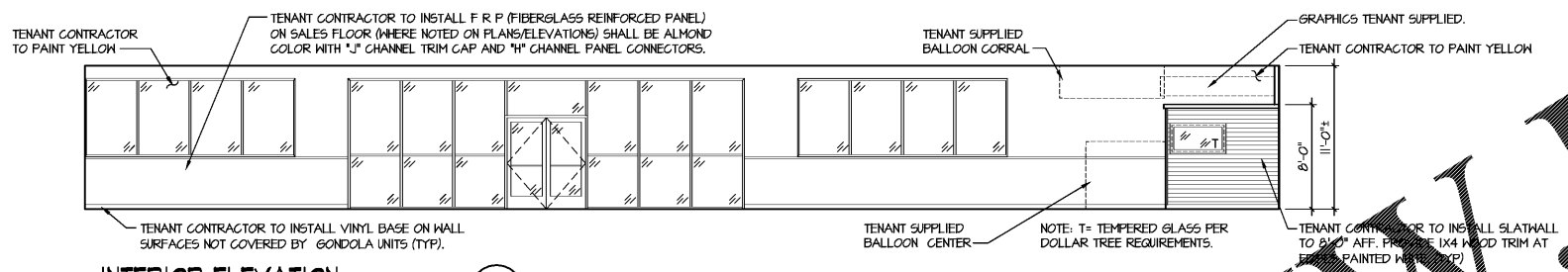


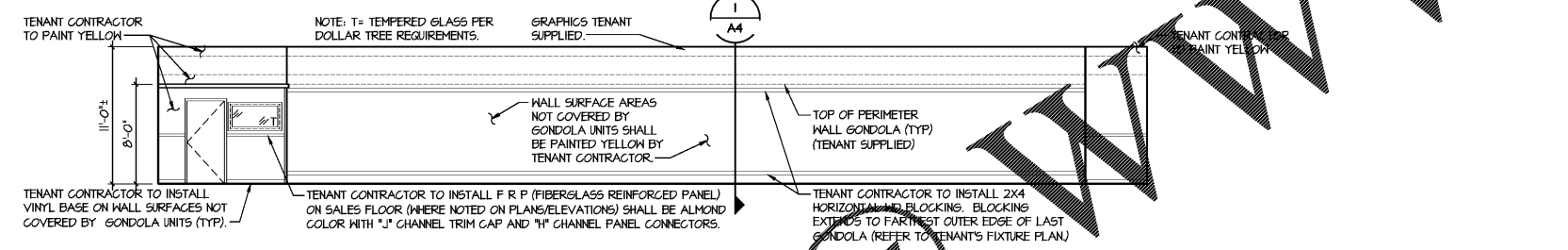
**EXTERIOR ELEVATION**  
SCALE: 3/16"=1'-0"



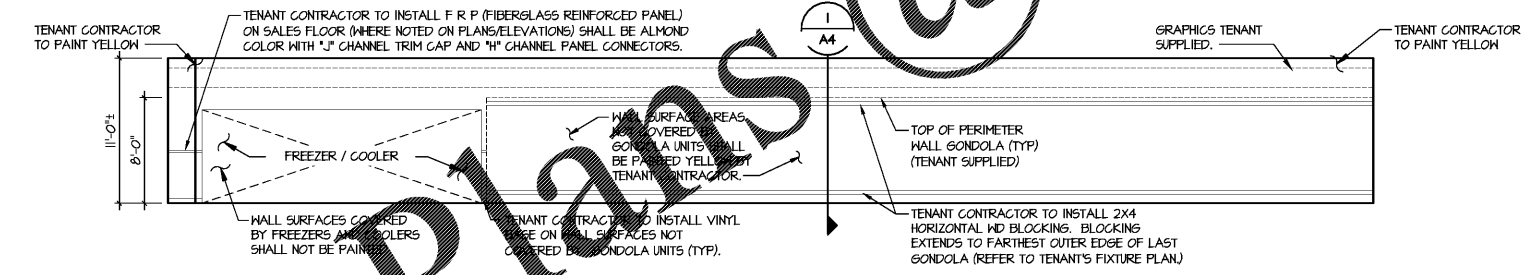
**ACCESSIBILITY DECAL AT STOREFRONT ENTRANCE**  
SCALE: 3/16"=1'-0"



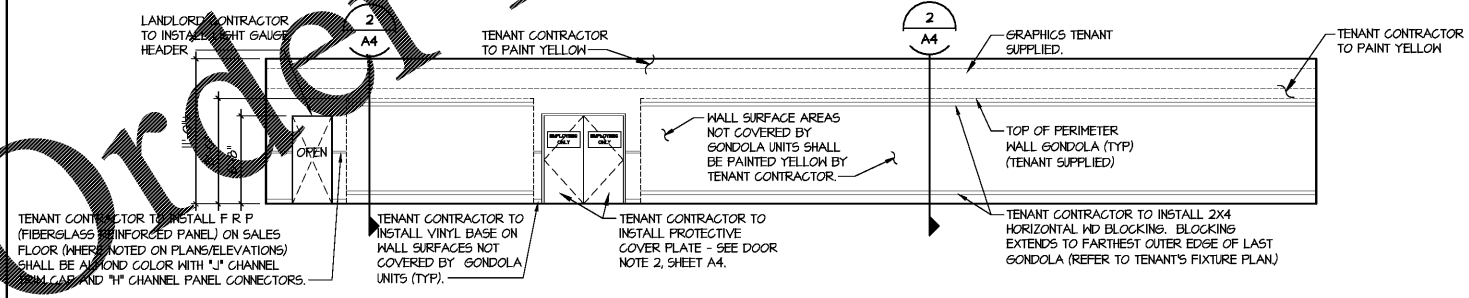
**INTERIOR ELEVATION**  
SCALE: 3/16"=1'-0"



**INTERIOR ELEVATION**  
SCALE: 3/16"=1'-0"



**INTERIOR ELEVATION**  
SCALE: 3/16"=1'-0"



**INTERIOR ELEVATION**  
SCALE: 3/16"=1'-0"

**LANDLORD NOTES:**  
 CONTRACTOR SHALL REMOVE AND DISPOSE OF ANY AND ALL PREVIOUS TENANT'S EXTERIOR SIGNAGE LEFT BEHIND. ALL EXISTING MATERIALS TO REMAIN WHICH ARE DAMAGED OR OTHERWISE DISTURBED BY REMOVAL OF PREVIOUS TENANT SIGNAGE SHALL BE PATCHED OR REPAIRED AND PAINTED TO MATCH EXISTING ADJACENT MATERIALS. THAT THE REPAIR IS IMPERCEPTIBLE. CONTRACTORS SHALL NOT INCLUDE THIS SCOPE OF WORK IN THEIR BID AND WILL BE HANDLED VIA CHANGE ORDER AFTER SITE EVALUATION IS DONE BY WINNING BIDDER. CONTRACTOR SHALL FORWARD THE EVALUATION AND PRICE QUOTE TO THE CONSTRUCTION PM FOR APPROVAL PRIOR TO PERFORMING ANY AND ALL WORK.  
 NOTE: SIGNS, LOCATION, NUMBER AND SIZE ARE NOT APPROVED UNDER THIS BUILDING PERMIT. A SEPARATE SIGN LOCATION PERMIT IS REQUIRED FOR EACH SIGN.  
 LANDLORD CONTRACTOR SHALL VERIFY WITH DOLLAR TREE CONSTRUCTION PROJECT MANAGER ANY PROPOSED CUSTOM INTERIOR WINDOW GRAPHICS/FILM PRIOR TO BUILDING INFILL WALL AT STOREFRONT.

description	by	mark	date	revisions

date	project	designed	drawn	checked
02/04/16	38469	rbk	rbk	rbk

**CASCO**  
 CASCO DIVERSIFIED CORPORATION  
 ARCHITECTURAL FIRM  
 LICENSE #000524  
 EXPIRES 12/31/14

PROFESSIONAL OF RECORD  
 MARK S. BROMEIERS  
 LIC. #A005177  
 EXPIRES: 12/31/18  
 ES&S: 21-54-302

project  
**DOLLAR TREE**  
 SALEM BITS  
 1811 E. SALEM BLVD., SALEM, MO 65660  
 drawing  
 EXTERIOR ELEVATION 1  
 INTERIOR ELEVATION

A3