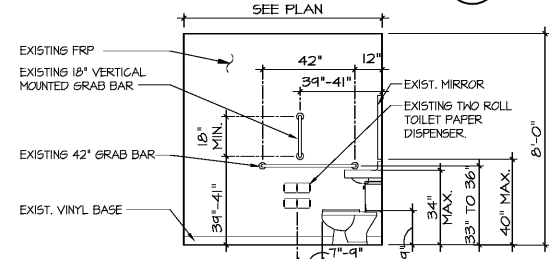
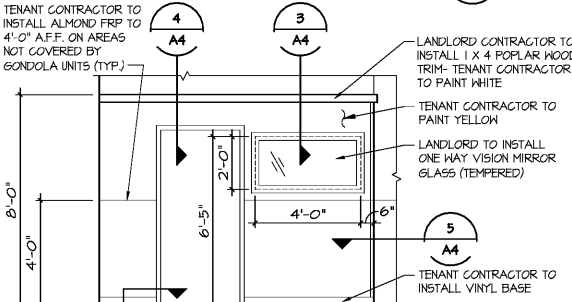


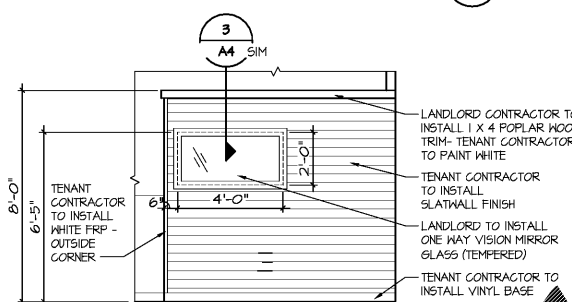
EXISTING TOILET ELEVATION A
SCALE: 3/8"=1'-0"



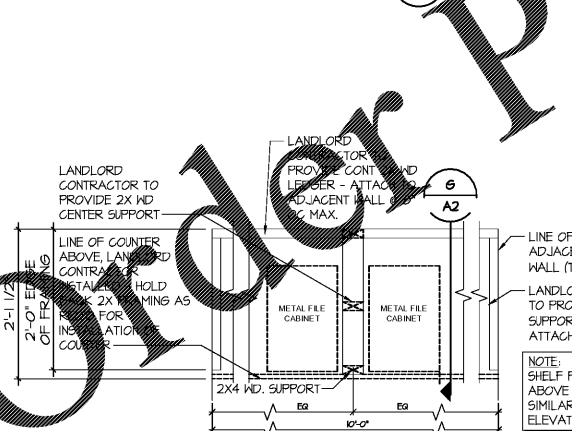
EXISTING TOILET ELEVATION B
SCALE: 3/8"=1'-0"



OFFICE ELEVATION C
SCALE: 3/8"=1'-0"



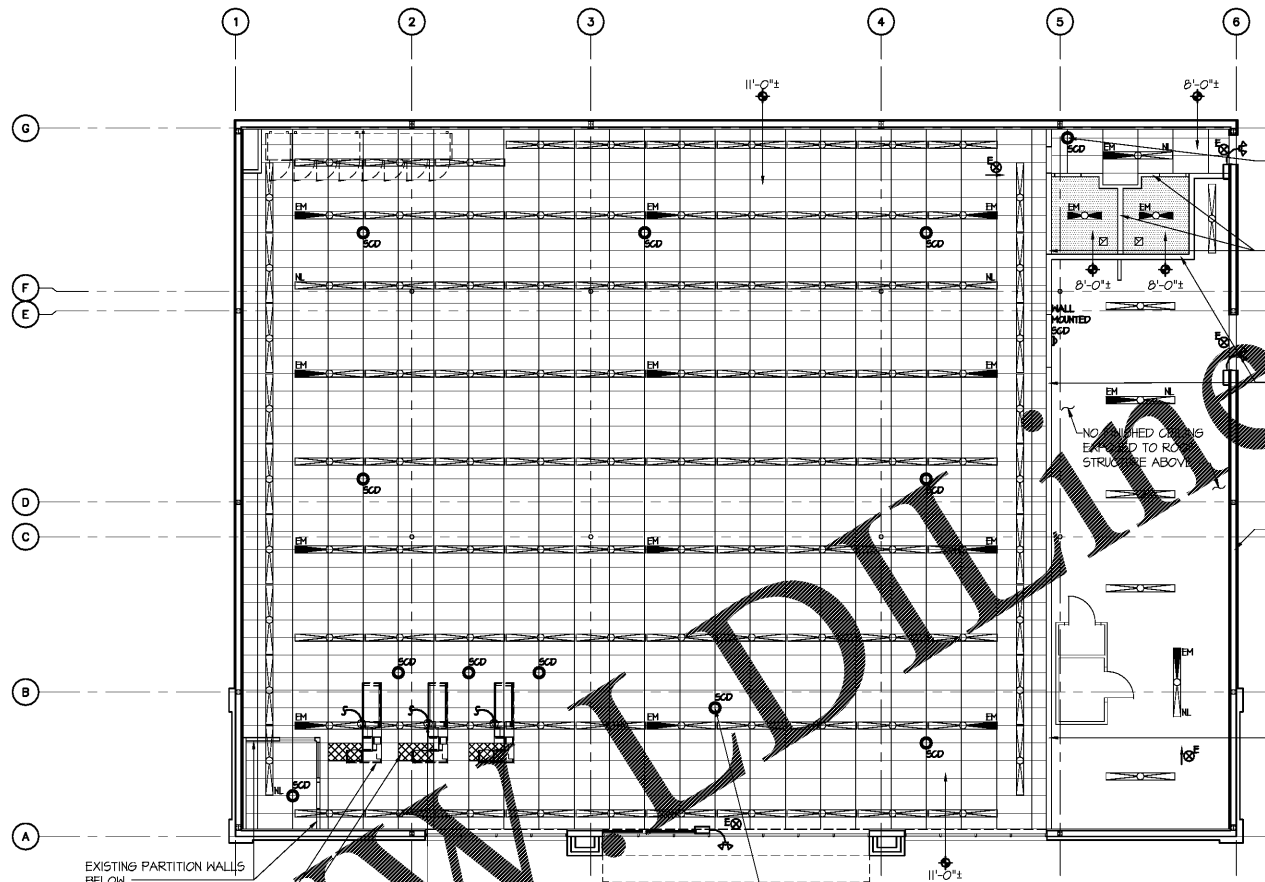
OFFICE ELEVATION D
SCALE: 3/8"=1'-0"



OFFICE DETAIL F
SCALE: 1"=1'-0"

LANDLORD NOTE:
TOILET ACCESSORIES ARE LANDLORD SUPPLIED - INCLUDING GRAB BARS AND MIRROR.
FLUSH CONTROLS SHALL BE LOCATED ON THE OPEN SIDE OF THE WATER CLOSET.
LANDLORD CONTRACTOR SHALL FIELD VERIFY ALL EXIST FLUMBING FIXTURES AND EXIST ACCESSORIES COMPLY WITH PLANS AND HANDICAPPED CODES AND LAWS. CONTRACTOR SHALL VERIFY COMPLIANCE TO FLOOR PLAN, ENLARGED PLANS AND ELEVATIONS THIS SET. NOTIFY CONSTRUCTION PM WITH ANY DISCREPANCIES.

TENANT NOTE:
THE ONLY TOILET ACCESSORIES THAT ARE TENANT SUPPLIED - HAND DRYER.
THE ELECTRIC HAND DRYER WILL NOT EXTEND MORE THAN 4" FROM THE WALL ON WHICH IT IS MOUNTED UNLESS IT HAS A LEADING EDGE AT OR BELOW 27" ABOVE FINISHED FLOOR.
TENANT CONTRACTOR SHALL INSTALL NEW OCCUPANCY SENSOR IN PLACE OF EXISTING WALL SWITCH. REFER TO ELECTRICAL DRAWINGS FOR ADDITIONAL INFORMATION.

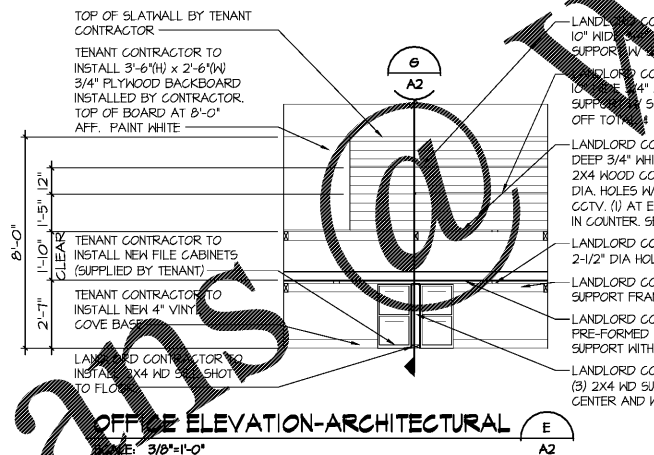


REFLECTED CEILING PLAN (N.I.C.)
SCALE: 1/8"=1'-0"

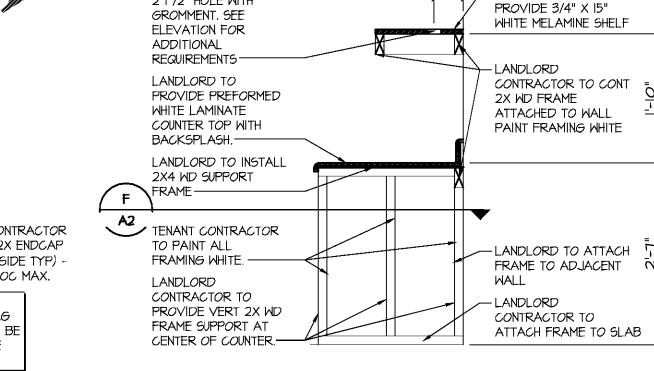
- NOTES**
- MOUNT LIGHTS AND SECURITY CAMERA DOMES AT 12'-0" A.F.F. IN SALES AREA AND 10'-0" A.F.F. IN STOCKROOM.
 - SECURITY CAMERA DOMES, MIRROR PANELS, AND POWER POLES ARE SUPPLIED BY TENANT FOR CONTRACTOR'S INSTALLATION.
 - ALL LIGHT FIXTURES ARE SUPPLIED BY LANDLORD AND SHALL HAVE T-8 BULBS AND ELECTRONIC BALLASTS. REFER TO TENANT'S EXHIBIT C.

REFLECTED CEILING LEGEND

	EXISTING EMERGENCY LIGHT AND BATTERY BACKUP.		VENTILATION FAN
	EXISTING EMERGENCY LIGHT		CEILING HEIGHT ABOVE FINISH FLOOR
	POWER POLE BY TENANT		DIFFUSER
	CONCENTRIC DIFFUSER/RETURN		RETURN AIR GRILLE
	CEILING OCCUPANCY SENSOR MODEL CMR-PDT-2P		JUNCTION BOX
	EXISTING EXIT LIGHT		
	SECURITY CAMERA DOME BY TENANT		
	SECURITY CAMERA DOME MTD ON WALL @ 10'-0" AFF. BY TENANT		
	EXISTING 2'-0" X 4'-0" ACOUSTICAL CEILING TILE AND GRID - SEE FINISH NOTE 4.		
	EXISTING 6WB - PAINT WHITE UNLESS OTHERWISE NOTED.		
	EXISTING 8'-0" STRIP LED LIGHT FIXTURE WITH LAMPS ON NIGHT LIGHT CIRCUIT. SURFACE MOUNT TO 6WB OR PER DETAIL NOTED.		
	EXISTING 8'-0" STRIP LED LIGHT FIXTURE. SURFACE MOUNT TO 6WB OR PER DETAIL NOTED.		
	8'-0" STRIP LED LIGHT FIXTURE WITH LAMPS ON EMERGENCY LIGHT CIRCUIT WITH BATTERY PACK. SURFACE MOUNT TO 6WB OR PER DETAIL NOTED. FOR FIXTURES WITH 4 LAMPS, THE EMERGENCY BATTERY PACK WILL ONLY OPERATE 2 OF THE LAMPS.		
	EXISTING 4'-0" STRIP LED LIGHT FIXTURE WITH LAMPS ON NIGHT LIGHT CIRCUIT. SURFACE MOUNT TO TO 6WB OR PER DETAIL NOTED.		
	EXISTING 4'-0" STRIP LED LIGHT FIXTURE. SURFACE MOUNT TO TO 6WB OR PER DETAIL NOTED.		
	EXISTING 4'-0" STRIP LED LIGHT FIXTURE WITH LAMPS ON EMERGENCY LIGHT CIRCUIT WITH BATTERY PACK. SURFACE MOUNT TO TO 6WB OR PER DETAIL NOTED.		



OFFICE ELEVATION-ARCHITECTURAL E
SCALE: 3/8"=1'-0"



OFFICE SECTION G
SCALE: 1"=1'-0"

LANDLORD NOTE:
TOILET ROOM LIGHT FIXTURES & EXHAUST FANS SHALL BE 120 VOLT EQUIPMENT.

SECURITY DOMES BY TENANT CONTRACTOR
PARTITION WALLS BELOW
EXISTING PARTITION WALL TO DECK
EXISTING DEMISING WALL TO DECK
EXISTING PARTITION WALL TO DECK

date	project	designed	drawn	checked	mark	date	revisions
06/04/19	39409	KJK	KJK	DRS			



CASCO DIVERSIFIED CORPORATION
ARCHITECTURAL FIRM
LICENSE #000324
EXPIRES 12/31/14

PROFESSIONAL OF RECORD
MARK S. BROMEIER
LIC #400277
EXPIRES: 12/31/18
PHONE: 314-524-1007

project
DOLLAR TREE
SALEM BPTS
1871 SCENIC BLVD. SALEM, MO 65660
drawing
REFLECTED CEILING PLAN LEGEND
OFFICE ELEVATIONS & TOILET ELEVATIONS