

LIGHTING NOTES

NOTE: ELECTRICAL CONTRACTOR TO REVIEW ALL INFORMATION ON SHEETS A100, A110, E100, E200 & E300. CONTACT SUPERCUTS PROJECT MANAGER AND GENERAL CONTRACTOR IF ALL SHEETS WERE NOT RECEIVED BEFORE BIDDING.

ANY MATERIALS OR EQUIPMENT SUBSTITUTIONS WITHOUT PRIOR APPROVAL BY PROJECT MANAGER WILL RESULT IN REPLACEMENT WITH CORRECT MATERIALS AND/OR EQUIPMENT AS SPECIFIED BY THE OWNER AND AT THE SOLE COST TO THE GENERAL CONTRACTOR.

ALL EXISTING CONDITIONS SHALL BE VERIFIED BY THE GENERAL CONTRACTOR. FAILURE TO VERIFY THE EXISTING CONDITIONS SHALL NOT RELIEVE CONTRACTOR OF ANY EXPENSES OR RESPONSIBILITIES RESULTING FROM THAT FAILURE.

TENANT CONTRACTOR TO VERIFY ALL NL/EM LIGHTING. CONTRACTOR RESPONSIBLE TO INSTALL AS SHOWN ON PLAN E100 IF NOT PRESENT. CONTRACTOR TO VERIFY WITH LANDLORD PRIOR TO SUBMITTING BID. CONTRACTOR TO NOTIFY SUPERCUTS PROJECT MANAGER OF ANY DISCREPANCIES.

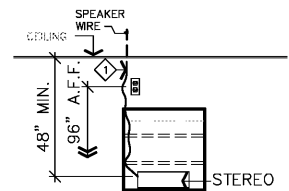
TENANT E.C. TO VERIFY THERE IS ADEQUATE GENERAL AND EMERGENCY EGRESS LIGHTING AT FRONT AND REAR EXTERIOR EXITS PER CODE.

TENANT E.C. SHALL RELOCATE EXISTING LIGHT FIXTURES AS REQUIRED TO MATCH LIGHTING LAYOUT ON THIS SHEET.

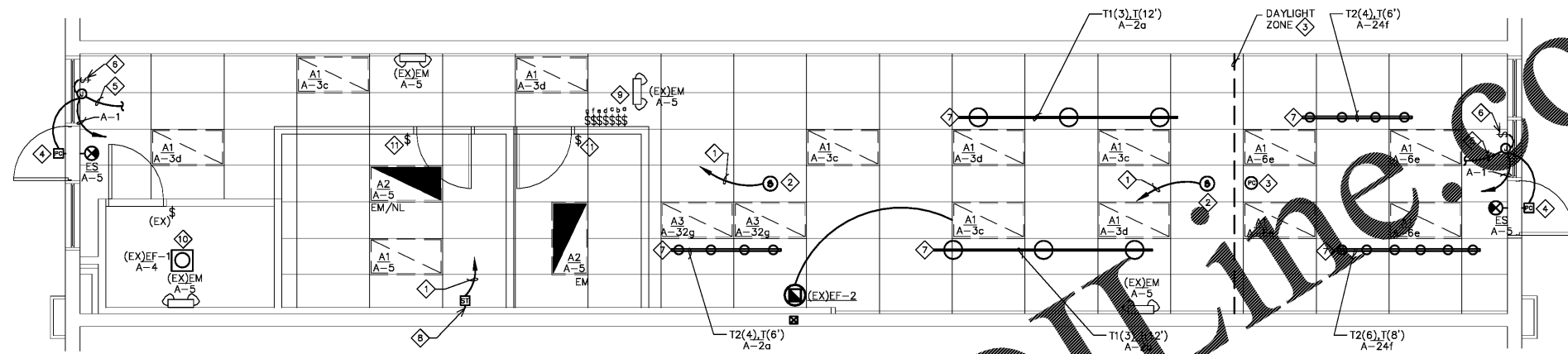
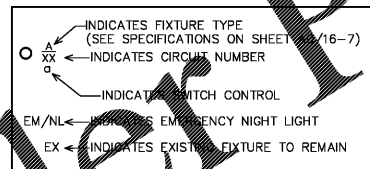
TENANT'S E.C. IS RESPONSIBLE FOR COMPLETE ASSEMBLY OF EMERGENCY LIGHTING SYSTEM INCLUDING BUT NOT LIMITED TO WIRINGS, JUNCTION BOXES, & TEST SWITCHES.

LIGHTING PLAN KEY NOTES

- 1. SPEAKER WIRE TO STEREO LOCATION BY ELECTRICAL CONTRACTOR. LEAVE 48" OF SPEAKER WIRE BELOW CEILING LEVEL.
- 2. SPEAKERS MUST BE CENTERED ON CEILING TILE. FURNISHED BY TENANT, INSTALLED BY ELECTRICAL CONTRACTOR (TYP. OF 2). E.C. TO FURNISH SPEAKER WIRE (SEE DETAIL THIS SHEET).
- 3. ALL LIGHTS WITHIN THE DAYLIGHT ZONE TO BE CONNECTED AND CONTROLLED BY DAYLIGHT RESPONSIVE PHOTOCELL.
- 4. PROVIDE PHOTO CELL FOR STOREFRONT SIGN. INSTALL PHOTO CELL IN LANDLORD'S FASCIA. VERIFY LOCATION OF THE PHOTO CELL WITH LANDLORD AND SUPERCUTS PROJECT MANAGER. TORK #2000 OR APPROVED EQUAL.
- 5. PROVIDE CONNECTION TO STOREFRONT SIGN LIGHTING. SWITCHED THROUGH PHOTO CELL (CENTERED ON STOREFRONT ON EXTERIOR OF SPACE). VERIFY REQUIREMENTS IN FIELD. (VERIFY SIGN LOCATION).
- 6. PROVIDE DISCONNECT SWITCH IN CONCEALED, ACCESSIBLE LOCATION ABOVE STOREFRONT FOR CONNECTION TO REMOTE BALLAST TO STOREFRONT SIGN LIGHTING. (CENTERED ABOVE STOREFRONT INSIDE OF SPACE).
- 7. INSTALL J-BOX @ 1'-0" ABOVE FINISHED CEILING. DROP FLEXIBLE CONDUIT DOWN FOR END CONNECTION TO TRACK. (TYPICAL).
- 8. STEREO LOCATION (SEE DETAIL ON THIS SHEET).
- 9. PROVIDE AND INSTALL NEW SWITCHBANK AT 46" A.F.F.O.C.. PROVIDE 0-10V CONTINUOUS DIMMING SWITCH OF GENERAL SALES AND SALON LIGHTING BY USING NOVA T DIMMER CONTROLS (NTSTV-DV-WH) FOR LED LIGHTS.
- 10. EXISTING FAN AND LIGHT TO REMAIN.
- 11. MOUNT SWITCH(ES) AT 46" A.F.F.O.C.



2. SHELF ABOVE DISPENSARY CABINET
NO SCALE



G.C. TO VERIFY ALL WIRING FOR LIGHT FIXTURES PROVIDED BY LANDLORD ARE PROVIDED.

1. LIGHTING PLAN
1/4" = 1'-0"

LIGHTING FIXTURE SCHEDULE

FIXTURE LETTER TYPE	FIXTURE TYPE	PLT	MOUNTING	LAMP	MANUFACTURER'S CATALOG NUMBERS	REMARKS	SYMBOL
A1	EXISTING 2' X 4' FLUOR. LAY-IN	120	RECESSED	T8	EXISTING	EXISTING	[Symbol]
A2	EXISTING 2' X 4' FLUOR. LAY-IN	120	RECESSED	T8	EXISTING	EXISTING	[Symbol]
A3	EXISTING 2' X 4' FLUOR. LAY-IN (DIMMABLE)	120	RECESSED	T8	EXISTING	EXISTING WITH DIMMABLE BALLAST	[Symbol]
T1	TRACK HUNG PENDANT	120	TRACK	LED10DR30V/830W	JUNO SP2329/BL	FURNISHED BY TENANT INSTALLED BY ELECTRICAL CONTRACTOR	[Symbol]
T2	TRACK	120	TRACK	LED10DR30V/830W	JUNO T691NA	FURNISHED BY TENANT INSTALLED BY ELECTRICAL CONTRACTOR	[Symbol]
T	TRACK	120	TRACK	---	JUNO T8WH (8'), T6WH (6'), T4WH (4'), T2WH (2')	FURNISHED BY TENANT INSTALLED BY ELECTRICAL CONTRACTOR	[Symbol]
S	SPEAKERS	---	RECESSED	---	KLIPSCH #CS-16C II, 6 1/2" ROUND SPEAKER WITH PAINTABLE COVER "WHITE". ARCHITECTURAL IN-CEILING SPEAKERS.	FURNISHED BY TENANT INSTALLED BY ELECTRICAL CONTRACTOR	[Symbol]
ES	EXISTING EXIT SIGN	120	STEM	EXISTING	EXISTING	EXISTING	[Symbol]
(EX)EF-1	EXISTING EXHAUST FAN	120	CEILING MOUNT	EXISTING	EXISTING	EXISTING	[Symbol]
(EX)EM	EXISTING EMERGENCY LIGHTS	120	SURFACE	EXISTING	EXISTING	EXISTING	[Symbol]

SALES AREA A-2	SALON AREA A-2	SALON AREA A-3	SALON AREA A-3	SALON AREA A-6	SALON AREA A-22	SALON AREA A-22
SWITCH	SWITCH	SWITCH	SWITCH	SWITCH	SWITCH	DIMMER
TRACK LIGHTS LED	TRACK LIGHTS LED	2X4 RECESSED LIGHT GENERAL LIGHTS FLUORESCENT	2X4 RECESSED LIGHT GENERAL LIGHTS FLUORESCENT	PRIMARY ZONE GENERAL LIGHTS FLUORESCENT	PRIMARY ZONE GENERAL LIGHTS LED TRACK LIGHTS	SHAMPOO LIGHTS FLUORESCENT
'd'	'b'	'c'	'd'	'e'	'f'	'g'

3. LIGHT SWITCH BANK
NTS

Order Plans @ WWW.DIline.com