

FLOORING NOTES

GENERAL FLOORING NOTES:

CONTRACTOR IS RESPONSIBLE FOR ALL FLOOR PREPARATION TO ASSURE FLOOR IS READY TO RECEIVE SPECIFIED MATERIALS. FLOOR FINISHES TO BE LEVEL AND COMPLETED IN A PROFESSIONAL WORKMANSHIP MANNER.

FLOORING SUB-CONTRACTOR MUST DO A CALCIUM CHLORIDE OR PERCENT RELATIVE HUMIDITY MOISTURE TEST ON EXISTING CONCRETE SLAB NO LATER THAN TWO WEEKS PRIOR TO THE START OF CONSTRUCTION. TEST RESULTS MUST BE REPORTED TO THE SUPERCUTS PROJECT MANAGER IMMEDIATELY. IF FLOORING SUB-CONTRACTOR DOES NOT CONDUCT THIS TEST, OR REPORT RESULTS OF TEST TO THE REGIS PROJECT MANAGER IN A TIMELY MANNER, THE FLOORING SUB-CONTRACTOR ACCEPTS ALL RESPONSIBILITY FOR THE INSTALLATION OF THIS NEW FLOOR, INCLUDING REPAIRING AND/OR FULL REPLACEMENT OF FLOOR, DURING THE LIFE OF THE FLOOR.

CALCIUM CHLORIDE TEST NOT TO EXCEED 8#/1000SFT/24 HRS RH NOT TO EXCEED 85% PH SHOULD REGISTER BETWEEN 7 AND 9 THE COST FOR THE TEST OF CONCRETE SHALL BE INCLUDED IN BID

CONTRACTOR IS RESPONSIBLE FOR COMPLETING INITIAL MAINTENANCE AS SOON AS POSSIBLE AFTER FLOORING INSTALLATION.

FLOORING MUST BE PROTECTED AGAINST ALL OTHER TRADES, TRAFFIC AND WEIGHT THRU-OUT SALON. CONTRACTOR TO LAY DOWN A PROTECTIVE COVERING.

PREVAIL MOISTURE VAPOR BARRIER NOTES:

HVAC MUST BE IN OPERATION AT LEAST ONE WEEK PRIOR TO INSTALLATION. THE FLOOR AND ROOM TEMPERATURE, AS WELL AS FLOORING MATERIALS AND PREVAIL MOISTURE VAPOR BARRIER, MUST BE AT 65 DEGREES TO 85 DEGREES, AND THE AMBIENT RH (RELATIVE HUMIDITY) BETWEEN 35% AND 85% FOR 48 HOURS BEFORE, DURING AND AFTER TESTING AND INSTALLATION. ROLL OUT THE PREVAIL MOISTURE VAPOR BARRIER EVENLY OVER THE SUBSTRATE. OVERLAP EDGES 8 INCHES, USING THE PRINTED PREVAIL LOGO AS A GUIDE. DO NOT LEAVE GAPS BETWEEN THE ROWS.

KONECTO VINYL PLANK FLOORING NOTES:

CONDITION KONECTO PRIOR TO INSTALLATION: KONECTO MUST BE STORED AT ROOM TEMPERATURE OF AT LEAST 65 DEGREES FAHRENHEIT, FOR 24 TO 48 HOURS BEFORE INSTALLATION. DO NOT OPEN THE PACKAGES, BUT SPREAD THEM OUT. STACK NO MORE THAN 3 HIGH WITH AT LEAST 4" OF AIRFLOW AROUND, BUT NOT NEXT TO HEAT OR COLLING DUCTS OR DIRECT SUNLIGHT.

WHEN EACH PLANK IS JOINED, UTILIZE A HAND ROLLER DIRECTLY ON THE JOINED SEAM TO CREATE THE PROPER BOND BETWEEN STRIP A AND STRIP B. THIS IS A MANDATORY PART OF THE INSTALLATION PROCEDURE! AFTER COMPLETION, ROLL THE ENTIRE FLOOR IN BOTH DIRECTIONS WITH A 100 LB ROLLER.

BEFORE STARTING AN INSTALLATION, TWO PLANKS SHOULD BE JOINED AND THEN ROLLED AND PULLED APART. A BOND SHOULD BE OBSERVED THROUGHOUT THE WHOLE STRIP. ADHESIVE LEGS AND/OR TRANSFER FROM ONE SIDE TO THE OTHER SHOULD BE SEEN. THIS WILL CONFIRM THE MATERIAL IS ACCLIMATED AND THE TEMPERATURE OF MATERIAL IS CORRECT FOR INSTALLATION. NOT ROLLING WILL VOID WARRANTY!

WHEN INSTALLING KONECTO, BE SURE TO KEEP DUST, DIRT OR FOREIGN PARTICLES AWAY FROM THE KONECTO STRIP. THE CLEANER THE KONECTO STRIP REMAINS, THE BETTER THE BOND BETWEEN PLANKS. A PROTECTIVE SHEET OF PAPER HAS BEEN PLACED BETWEEN EACH PLANK INSURING THE KONECTO STRIP REMAINS CLEAN AND READY TO USE.

WHEN INSTALLING PLANKS, YOU SHOULD WORK OUT OF A MINIMUM OF 3 BOXES AND MIX PLANKS WHEN INSTALLING.

KONECTO/PREVAIL ADHESIVE KITS ARE INCLUDED. APPLY A MINIMAL AMOUNT ON THE ADHESIVE TABS FOR ADDITIONAL ADHESION FOR FUTURE PREVENTATIVE MEASURES. (COVERAGE 50-75/LN FT PER BOTTLE)

CONTRACTOR TO REFER TO INSTRUCTION MANUAL FOR ALL CONDITIONS NEEDED FOR INSTALLATION.

CONTRACTOR IS RESPONSIBLE FOR COMPLETING INITIAL MAINTENANCE AS SOON AS POSSIBLE AFTER FLOORING INSTALLATION. SWEEP OR VACUUM THOROUGHLY AND REMOVE ANY ADHESIVE RESIDUE FROM SURFACE. MINERAL SPIRITS IS FINE FOR THIS.

DO NOT WASH THE FLOOR FOR AT LEAST 24 HOURS AFTER INSTALLATION. LIGHTLY DAMP MOP WITH KONECTO CLEANER FOLLOWING INSTRUCTIONS ON BOTTLE. REMOVE ANY SCUFFS AND EXCESSIVE SOIL BY CAREFUL SCRUBBING. CERTAIN TYPES OF RUBBER HEEL MARKS MAY BE REMOVED BY RUBBING WITH A CLOTH DAMPENED IN MICROFLOOR BLACK SCUFF AND ADHESIVE REMOVER.

FLOORING MUST BE PROTECTED AGAINST ALL OTHER TRADES, TRAFFIC AND WEIGHT THRU-OUT SALON. CONTRACTOR TO LAY DOWN A PROTECTIVE COVERING.

ROOM FINISH SCHEDULE

ROOM NUMBER	ROOM NAME	FLOOR			WALLS		CEILING			REMARKS
		MAT	FIN	BASE	MAT	FIN	MAT	FIN	HGT	
101	RECEPTION AREA	CONC	PLV-1	VB-1	GYP	PT-4	ACT-2 ACT-3	-	10'-0"	-
102	WAITING AREA	CONC	PLV-1	VB-1	GYP	PT-4	ACT-2 ACT-3	-	10'-0"	-
103	STYLING AREA	CONC	PLV-1	VB-1	GYP	PT-4	ACT-2 ACT-3	-	10'-0"	-
104	SHAMPOO AREA	CONC	PLV-1	VB-1	GYP	PT-3/PT-4	ACT-2 ACT-3	-	10'-0"	-
105	OFFICE	CONC	PLV-1	VB-1	GYP	PT-1	ACT-2 ACT-3	-	10'-0"	-
106	STAFF/UTILITY ROOM	CONC	PLV-1	VB-1	GYP	PT-1	ACT-2 ACT-3	-	10'-0"	-
107	TOILET ROOM	CONC	PLV-1	VB-1	GYP	PT-4	GYP	PT-1	8'-0"	-
108	CORRIDOR	CONC	PLV-1	VB-1	GYP	PT-3	ACT-2 ACT-3	-	10'-0"	-

FINISH MATERIAL LEGEND

PAINT	TYPE	SHERWIN WILLIAMS NUMBER/NAME	LOCATION	SUPPLIED BY
PT-1	PROMAR 200 ZERO VOC EG-SHEL	SW7557 "SUMMER WHITE"	STAFF/UTILITY ROOM & OFFICE	CONTR.
PT-2	PRECATALYZED WATERBASED EPOXY SEMI-GLOSS	SW7065 "ARGOS"	DOORS & FRAMES, SALON SIDE OF SERVICE DOOR & FRAME	CONTR.
PT-3	PROMAR 200 ZERO VOC EG-SHEL SEMI-GLOSS	SW6804 "DIGNITY BLUE"	ACCENT WALLS	CONTR.
PT-4	PROMAR 200 ZERO VOC EG-SHEL SEMI-GLOSS	SW7065 "ARGOS"	RECEPTION AREA, WAITING AREA, STYLING AREA, SHAMPOO AREA, LOW WALL, RESTROOMS	CONTR.
	PROMAR 200 ZERO VOC INTERIOR LATEX PRIMER	B28W002600 "WHITE"	ALL WALLS	CONTR.
CEILING TILE	TYPE	MANUFACTURER	LOCATION	SUPPLIED BY
ACT-1	2'x4' x 5/8" LAY-IN	ARMSTRONG CORTEGA #703 W/ TEGULAR EDGE CLASS 'A' FLAME SPREAD	THROUGHOUT SALON	L.L.
ACT-2	-			
ACT-3	-	ARMSTRONG PRELUDE ML MATTE WHITE SNAP GRID SYSTEM *ONLY IF NOT LANDLORD PROVIDED		L.L.
FLOOR	TYPE	MANUFACTURER	LOCATION	SUPPLIED BY
PLV-1	VINYL PLANK FLOORING	KONECTO #66000 'ISLAND PLANK MAUI' INCLUDES CLEANER, SCRATCH REMOVER, KONECTO HAND ROLLER & KONECTO PREVAIL ADHESIVE KIT	THROUGHOUT SALON	TENANT
	PREVAIL MOISTURE VAPOR BARRIER	PREVAIL MOISTURE VAPOR BARRIER THICKNESS: 1 MIL SIZE: 6' x 50' (200 SF) ROLLS	THROUGHOUT SALON	TENANT
MISC.	TYPE	MANUFACTURER	LOCATION	SUPPLIED BY
VB-1	VINYL BASE	JOHNSITE 443 'BURNT LUMBER' HENRY 440 'WAVE BASE' ADHESIVE	THROUGHOUT SALON	TENANT
CG-1	PLASTIC CORNER GUARD	1" x 1" x 1/8" x 4'-0"	MOUNTED ABOVE VINYL BASE W/ COUNTERSUNK CHROME FASTENERS @ 12" O.C. ON ALL OUTSIDE CORNERS	CONTR.

FINISH MATERIAL NOTES

- ALL INTERIOR FINISHES TO COMPLY WITH CODE REQUIREMENTS
- SAMPLES OF ALL FINISHES ARE REQUIRED TO BE SUBMITTED FOR APPROVAL PRIOR TO INSTALLATION
- CONTRACTOR TO PROVIDE ALL PAINT FOR SALON, IF SPECIFIED PAINT CANNOT BE FOUND, CONTRACTOR TO MATCH PAINT SPECIFICATION AT ANOTHER PAINT OUTLET
- PAINT BOTH SIDES OF ALL DOORS AND FRAMES PT-2, INCLUDING ALL EXISTING DOORS & FRAMES, PAINT INSIDE FACE ONLY OF EXISTING SERVICE DOOR AND FRAME PT-2
- ALL WALLS MUST BE SMOOTH AND READY FOR PAINT FINISH. CONTRACTOR TO ENSURE NO DRYWALL SEAMS ARE VISIBLE AFTER WALLS ARE FINISHED (TYPICAL)
- CONTRACTOR TO PAINT ALL STAFF/UTILITY ROOM & OFFICE WALLS PT-1
- CONTRACTOR TO APPLY LATEX PRIMER ON ALL WALLS
- ALL ROOMS TO RECEIVE VINYL BASE
- GENERAL CONTRACTOR IS RESPONSIBLE FOR INSTALLING ALL FINISHES
- ALL PAINTED WALLS TO RECEIVE 1 COAT OF PRIMER AND 2 FINISH COATS OF PAINT

DOOR SCHEDULE

DOOR NO.	DOOR LOCATION	QTY	DOOR SIZE	DOOR			FRAME			HARDWARE								RATED	REMARKS
				TYPE	MATERIAL	FINISH	TYPE	MATERIAL	FINISH	PASSAGE LOCK	DEAD BOLT	PUSH/PULL	CROSSER W/ #5 MAX. OPENING FORCE	KICK PLATE	HINGES	ALL ST. HINGES - 1 1/2" PAIR BUTTS (PER LEAF)	CYLINDERS		
101	FRONT ENTRANCE	1	EXISTING	1	MTL	NA	1	MTL	NA										EXISTING
105	OFFICE	1	3'-0" x 6'-8" x 1 1/2"	1	WD	PT-2	1	HM	PT-2	X	X			X	X				
106	STAFF/UTILITY ROOM	1	3'-0" x 6'-8" x 1 1/2"	1	WD	PT-2	1	HM	PT-2	X	X			X	X				
107	TOILET ROOM	1	EXISTING	1	WD	PT-2	1	HM	PT-2										EXISTING
108	REAR SERVICE	1	EXISTING	1	MTL	NA	1	HM	PT-2										EXISTING

GENERAL NOTES

CONTRACTOR SHALL COORDINATE AND PROVIDE ALL DOORS & DOOR HARDWARE AS MAY BE REQUIRED FOR COMPLETE AND FUNCTIONAL ASSEMBLY. (ALL OFFICE & UTILITY DOORS TO BE SOLID CORE ONLY)

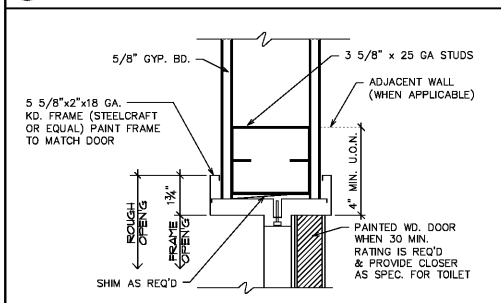
ALL DOOR HARDWARE SHALL COMPLY WITH ACCESSIBILITY STANDARDS

LANDLORD TO PROVIDE SIGNAGE ADJACENT TO THE FRONT DOOR WITH THE FOLLOWING TEXT AT A MIN. HEIGHT OF 1", "FRONT DOOR TO REMAIN UNLOCKED DURING BUSINESS HOURS"

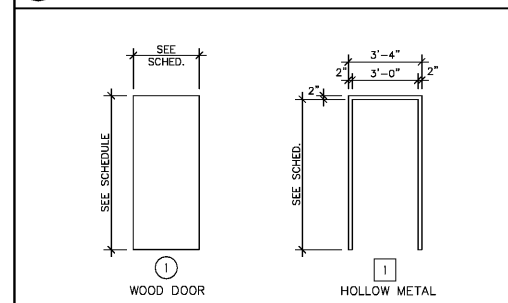
DOOR HARDWARE SCHEDULE

QTY	ITEM	MODEL NO./SIZE	FINISH	MANUFACTURER
OFFICE DOOR				
3	HINGES	FBB179 4 x 4	26D	STANLEY
1	PASSAGE SET	816N26D	26D	S. PARKER
1	DOOR STOP	402 1/2 "CONCAVE"	ALM	IVES
1	DEAD BOLT	82162KU	26D	S. PARKER
1	CLOSER	PAB15BC AL	ALM	S. PARKER
STAFF/UTILITY ROOM DOOR				
3	HINGES	FBB179 4 x 4	26D	STANLEY
1	PUSH/PULL	200D 3 1/2 x 15	28	HIAWATHA
1	KICK PLATE	10" x 34"	28	HIAWATHA
1	DOOR STOP	402 1/2 "CONCAVE"	ALM	IVES

1 DOOR HEAD DETAIL (SCALE: 3" = 1'-0")



2 DOOR/FRAME TYPES (SCALE: 1/4" = 1'-0")



ALEXANDR IATIS INCARB
10755 SANDHILL ROAD
DALLAS, TEXAS 75238
214.343.1000

12/13/2017

#81973

DETAILS / SCHEDULES & GENERAL NOTES

SUPERCUTS
TENANT BUILD-OUT
LAKESIDE VILLAGE
7790 WINTER GARDEN VINELAND RD, SUITE 300
WINDERMERE, FL 34786

DATE ISSUED
TENANT REVIEW 12.08.17
LANDLORD REVIEW 12.13.17
PERMIT 12.13.17

DRAWN BY BB
CHECKED BY AM
JOB NO. 17-678

A-500