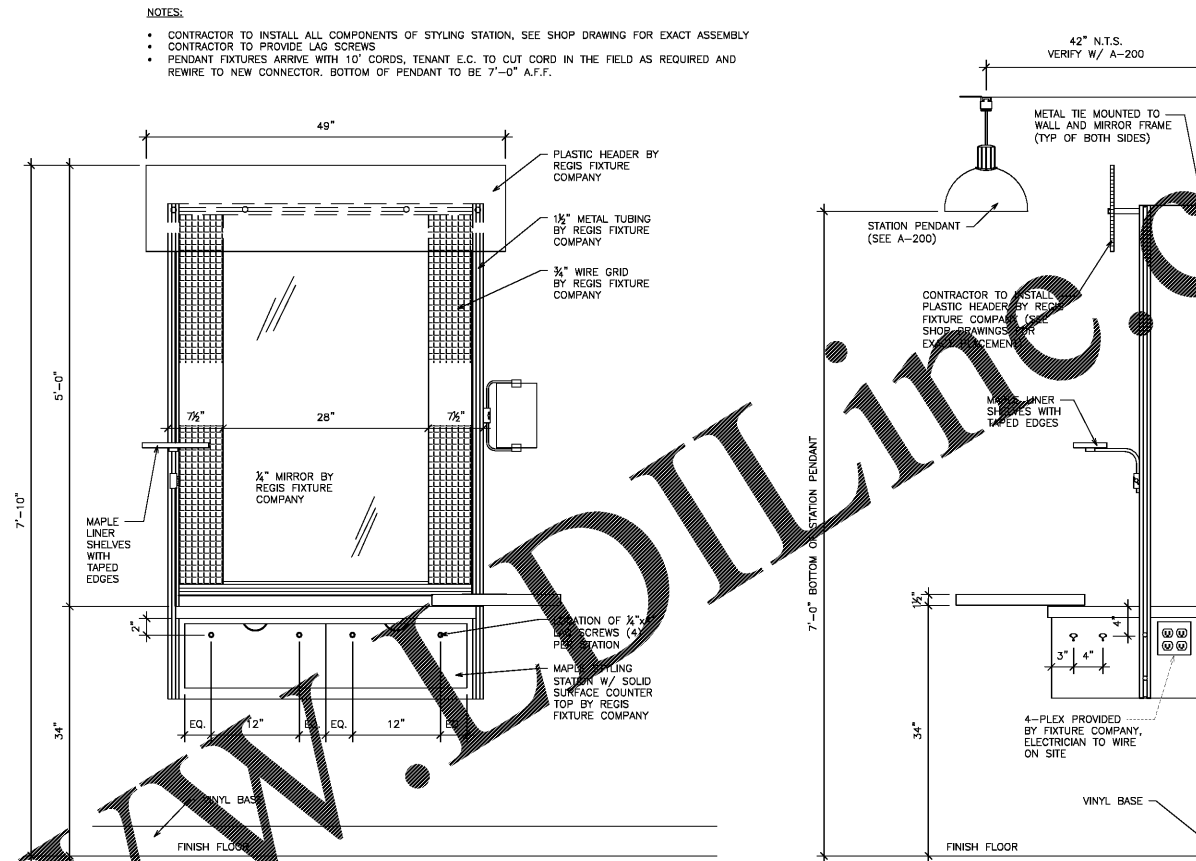


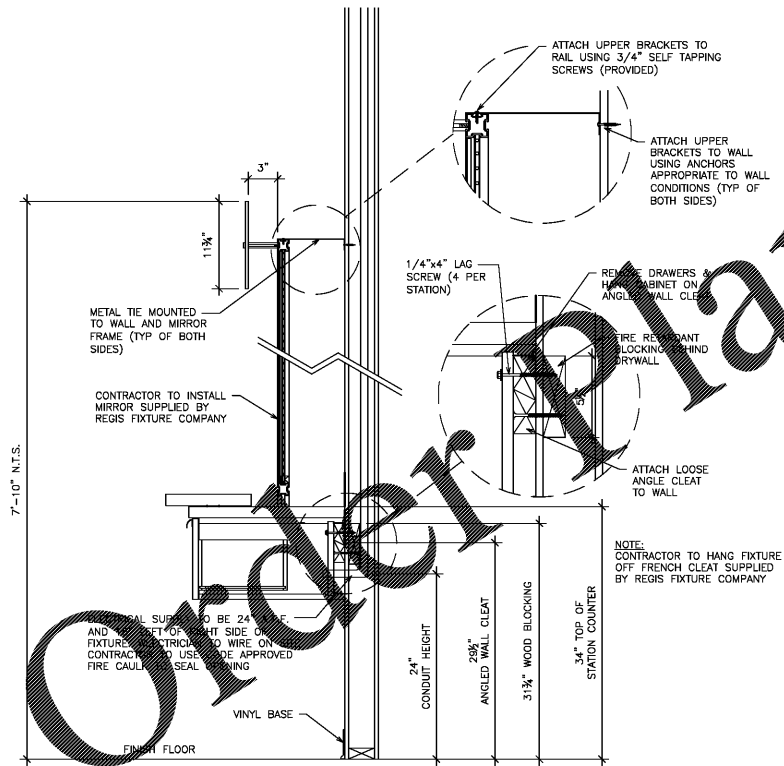
① NOT USED

② STYLING STATION WITHOUT SCONCES (SCALE: 1" = 1'-0")



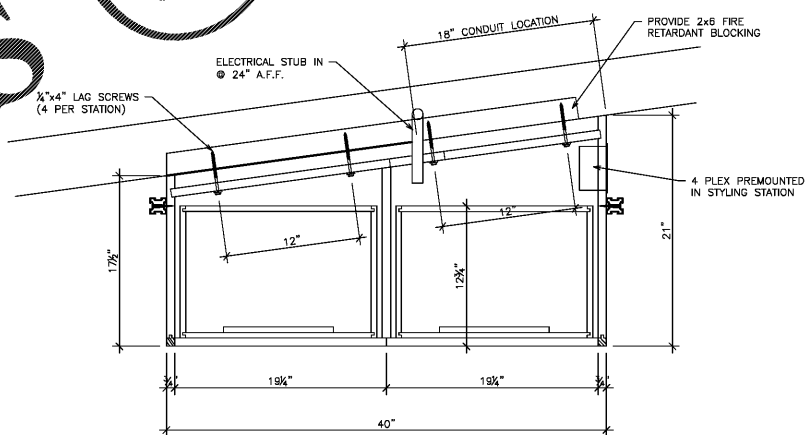
③ SECTION AT STYLING STATION (SCALE: 1" = 1'-0")

- NOTES:
- CONTRACTOR TO USE LAG SCREWS TO SECURE STATIONS TO WALL CLEAT, WALL AND FIRE RETARDANT BLOCKING IN WALL, CONTRACTOR TO PROVIDE LAG SCREWS
 - PROVIDE 2x6 FIRE RETARDANT TREATED BLOCKING IN ALL WALLS WHICH ARE DESIGNATED TO HAVE STYLING STATIONS, CONTRACTOR TO INSTALL W/ MIN. SCREW SPACING OF 6" O.C. & USE CONSTRUCTION ADHESIVE (SUCH AS PL200) ON ENTIRE SURFACE

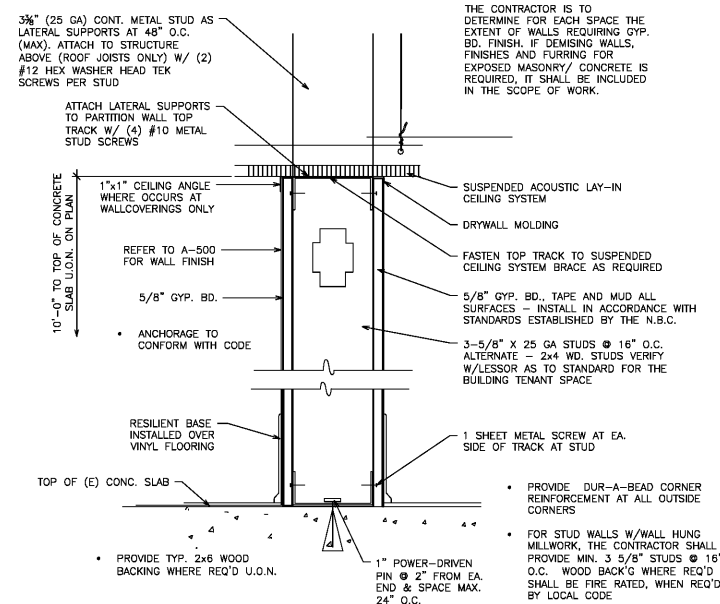


④ STYLING STATION PLAN VIEW (SCALE: 1/2" = 1'-0")

- NOTES:
- CONTRACTOR TO PROVIDE LAG SCREWS
 - CONTRACTOR TO USE CODE APPROVED FIRE CAULK TO SEAL OPENING



⑤ TYP. NON-LOAD BEARING PARTITION WALL (SCALE: 3" = 1'-0")



ALEXANDR IATIS INCARD
10755 SANDHILL ROAD
DALLAS, TEXAS 75238
214.343.1000

12/13/2017

#81973

SUPERCUTS
TENANT BUILD-OUT
LAKESIDE VILLAGE
7790 WINTER GARDEN VINELAND RD, SUITE 300
WINDERMERE, FL 34786
ELEVATIONS, SECTIONS
& DETAILS

SUPERCUTS

DATE ISSUED	
TENANT REVIEW	12.08.17
LANDLORD REVIEW	12.13.17
PERMIT	12.13.17
DRAWN BY	BB
CHECKED BY	AM
JOB NO.	17-678

A-301