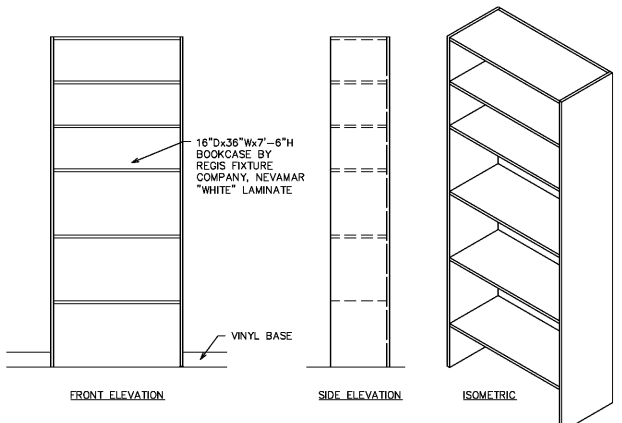


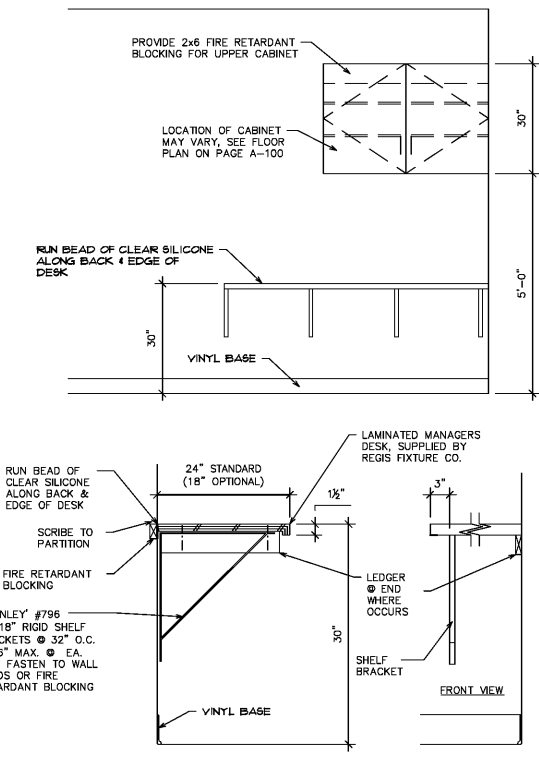
① PERMANENT SHELVING FIXTURE (SCALE: 1/2" = 1'-0")

NOTE:
 • CONTRACTOR TO SECURE PERMANENT SHELVES TO WALL AS REQUIRED PER LOCAL CODE

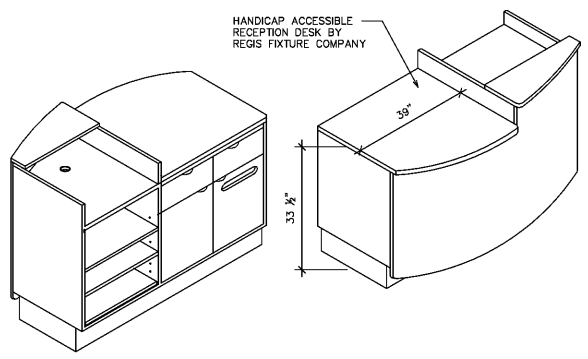


② OFFICE & STAFF COUNTER (SCALE: 1/2" = 1'-0")

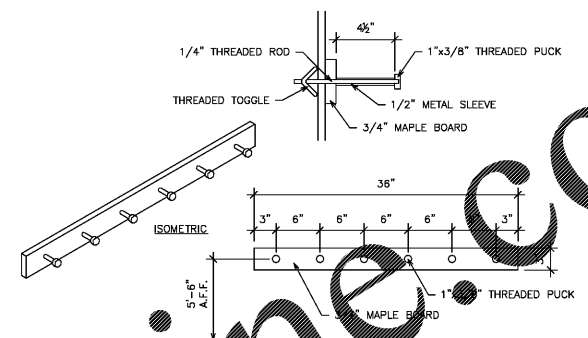
NOTES:
 • PROVIDE 2x6 FIRE RETARDANT BLOCKING IN ALL WALLS WHICH ARE DESIGNATED TO HAVE UPPER CABINETS AND WALL HUNG COUNTERS. CONTRACTOR TO INSTALL W/ MIN. SCREW SPACING OF 6" O.C. & USE CONSTRUCTIONS ADHESIVE (SUCH AS PL200) ON ENTIRE SURFACE
 • CONTRACTOR TO FIELD CUT COUNTER TO SIZE IF NECESSARY, SEE A-100 FOR ACTUAL LENGTH AND DEPTH OF COUNTER



③ RECEPTION DESK ISOMETRIC (SCALE: 1/2" = 1'-0")

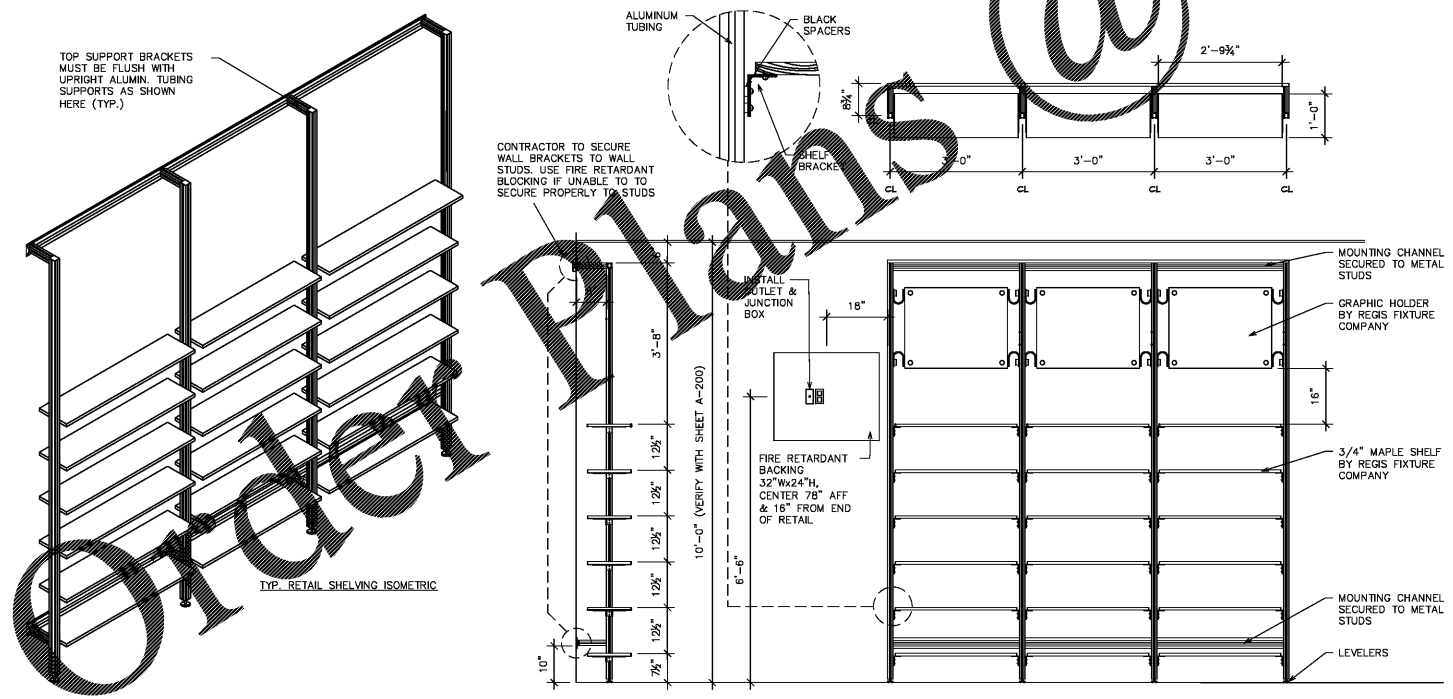


④ COAT RACK (SCALE: 1" = 1'-0")



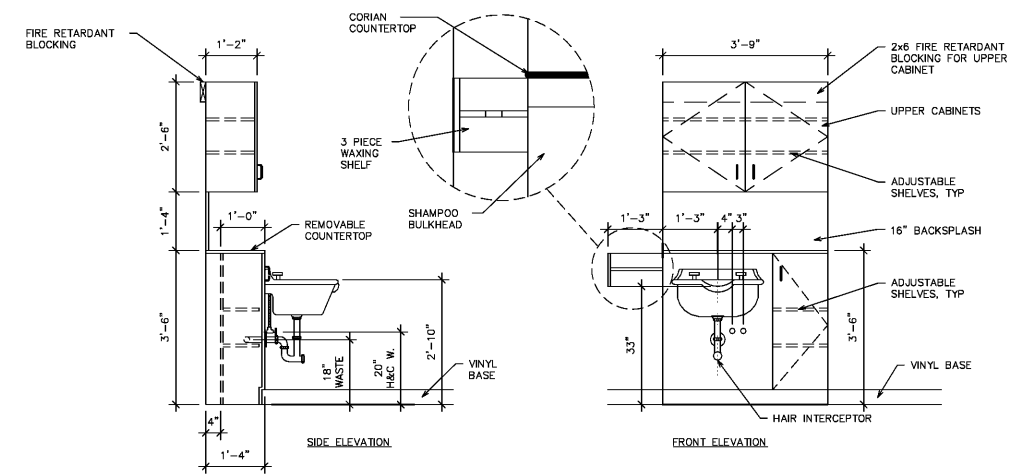
⑦ TYP. RETAIL SHELVING AT DEMISING WALL (SCALE: 1/2" = 1'-0")

NOTES:
 • E.C. TO INSTALL (1) DUPLEX OUTLET & (1) JUNCTION BOX FOR SUPER SALON MENU BOARD (SEE E-200)
 • LENGTH OF RETAIL MAY VARY SEE FLOOR PLAN (A-100) FOR ACTUAL SIZE



⑧ SHAMPOO BULKHEAD & SINK W/ UPPER CABINET ELEVATION (SCALE: 1/2" = 1'-0")

NOTES:
 • FOR REFERENCE PURPOSES ONLY - SEE FLOOR PLAN (A-100) FOR CORRECT LAYOUT
 • SHAMPOO BULKHEADS ARE PRE-DRILLED FOR PLUMBING PIPING
 • NO EXPOSED P.V.C. OR EXPOSED COPPER PIPING IS ALLOWED BY SUPERCUTS
 • CONTRACTOR TO RUN A BEAD OF CLEAR SILICONE ALONG THE BACK OF THE SHAMPOO BOWL
 • CONTRACTOR TO INSTALL STAINLESS STEEL W/ CHROME FINISH ON ALL EXPOSED HOT & COLD WATER SHUT-OFF VALVES AND WASTE LINE AT FACE OF SHAMPOO FIXTURE, NO EXCEPTIONS
 • PROVIDE 2x6 FIRE RETARDANT BLOCKING IN ALL WALLS WHICH ARE DESIGNATED TO HAVE SHAMPOO UPPER CABINETS. CONTRACTOR TO INSTALL W/ MIN. SCREW SPACING OF 6" O.C. & USE CONSTRUCTIONS ADHESIVE (SUCH AS PL200) ON ENTIRE SURFACE
 • CONTRACTOR TO F&I "BURNT UMBER" VINYL BASE AT SHAMPOO FIXTURE BASE IF NEEDED TO HIDE SHIMS
 • CONTRACTOR TO INSTALL 3-PIECE LAMINATE WAXING SHELF AS SHOWN. TOP OF WAXING SHELF MUST BE FLUSH WITH BOTTOM OF COUNTERTOP (TYP. BOTH SIDES)



ALEXANDR IATIS INCORP
 10755 SANDHILL ROAD
 DALLAS, TEXAS 75238
 214.343.1000

12/13/2017
 #81973
 SUPERCUTS
 TENANT BUILD-OUT
 LAKESIDE VILLAGE
 7790 WINTER GARDEN VINELAND RD, SUITE 300
 WINDERMERE, FL 34786
 ELEVATIONS, SECTIONS
 & DETAILS

SUPERCUTS
 DATE ISSUED
 TENANT REVIEW 12.08.17
 LANDLORD REVIEW 12.13.17
 PERMIT 12.13.17
 DRAWN BY BB
 CHECKED BY AM
 JOB NO. 17-678

A-300