

**ACCESSIBILITY GENERAL NOTES**

ACCESSIBLE ROUTE WITHIN BUILDING: SPACES WITHIN BUILDINGS: PROVIDE AN ACCESSIBLE ROUTE TO EACH SPACE OR PORTION WITHIN A BUILDING, TO ACCESSIBLE BUILDING ENTRANCES, NOT PASSING THROUGH KITCHENS, STORAGE ROOMS, RESTROOMS, CLOSETS OR SIMILAR SPACES (IF ONLY ONE ACCESSIBLE ROUTE IS PROVIDED).

CONSTRUCT WORK AREAS USED ONLY BY EMPLOYEES SO THAT INDIVIDUALS WITH DISABILITIES CAN APPROACH, ENTER AND EXIT THE AREA EXCEPT AT WORK AREAS LESS THAN 150 SF AND ELEVATED SEVEN (7) INCHES OR MORE ABOVE GROUND OR FINISH FLOOR - WHEN THE RAISED ELEVATION IS ESSENTIAL, THE PROTECTION OF THE WORK-AREA - PER CBC.

PROVIDE ACCESSIBLE ROUTES AT ALL COMMON-USE CIRCULATION PATHS WITHIN EMPLOYEE WORK AREAS UNLESS WORK AREA IS LESS THAN 300 SF AND DEFINED BY PERMANENTLY INSTALLED PARTITION WALLS, COUNTERS OR PARTITIONS.

ACCESSIBILITY IS NOT REQUIRED TO NON-OCCUPIED SPACES ACCESSED ONLY BY EMPLOYEES OR MAINTENANCE PERSONNEL OR FREIGHT HANDLING PERSONNEL THAT ARE NOT PERMANENTLY OPEN TO SERVICE PERSONNEL FOR MAINTENANCE PURPOSES, INCLUDING BUT NOT LIMITED TO ELEVATOR PITTS, ELEVATOR ENTRANCES, AND PIPING OR EQUIPMENT AT WALLS.

ACCESSIBLE ROUTE WITHIN BUILDING: ACCESSIBLE ROUTES MAY CONSIST OF ONE OR MORE OF THESE COMPONENTS: WALKING SURF, ELEVATORS AND PLATFORM LIFTS.

MINIMUM CORRIDOR WIDTH: 3'-0" MINIMUM WIDTH OF ACCESSIBLE AISLES: 3'-0"

CARPETED WALKING SURFACES: BROADLOOM OR CARPET TILE WITH FIBER CUSHIONPAD (OR WITHOUT CUSHION PAD) WITH LEVEL LOOP, TEXTURED LOOP LEVEL CUT, OR LEVEL CUT/ANCUIT PILE TEXTURE WITH 1/2" MAX PILE-HEIGHT. SECURELY ATTACH TO SUBSTRATE AND PROVIDE BEVELED EDGE-TRIM ALONG ENTIRE LENGTH OF EXPOSED EDGE PER ABOVE.

AREA-OF-RESCUE ASSISTANCE: PROVIDE AN "AREA-OF-RESCUE-ASSISTANCE" AT NON-ACCESSIBLE EXIT-DISCHARGE DOORS - EXCEPT IN BUILDINGS WITH A SUPPLY-LED AUTOMATIC FIRE-SUPPRESSION SYSTEM.

MINIMUM SIZE: PROVIDE MINIMUM OF TWO (2) EA 2'-6" X 4'-0" AREAS OR ONE (1) EACH PER 200 OCCUPANTS PER STORY SERVED NOT ENCRoACHING ON ANY REQUIRED EXIT WIDTH.

TOILET ROOMS OR COMPARTMENTS: UNI-SEX TOILET ROOM: PROVIDE AN ACCESSIBLE FACILITY WITH A SINGLE WATER-CLOSET AND LAVATORY IN ANY MERCANTILE OR ASSEMBLY OCCUPANCY WHERE A TOTAL OF SIX (6) OR MORE MALE AND FEMALE WATER-CLOSETS ARE REQUIRED (PER CBC).

PROVIDE UNI-SEX AND SINGLE-USE TOILET ROOMS WITH DOOR LOCKING FROM INSIDE.

WATER-CLOSET COMPARTMENTS: PROVIDE A MINIMUM OF ONE (1) WHEELCHAIR-ACCESSIBLE COMPARTMENT AND WHEN OVER SIX (6) WATER-CLOSETS + URINALS ARE PROVIDED IN A TOILET ROOM PROVIDE ONE (1) TO BE AMBULATORY-ACCESSIBLE IN ADDITION TO THE WHEELCHAIR-ACCESSIBLE UNIT.

SINKS: PROVIDE NO LESS THAN ONE (1) ACCESSIBLE SINK (OR 5% OF TOTAL) WHERE PROVIDED (MOP OR SERVICE-SINKS ARE NOT REQUIRED TO BE ACCESSIBLE).

DRINKING FOUNTAINS: IF ONLY ONE DRINKING FOUNTAIN IS PROVIDED IN A SPACE OR BUILDING, PROVIDE A "DUAL HI-LOW" TYPE UNIT ACCESSIBLE TO BOTH WHEELCHAIR USERS AND TO PERSONS WITH DIFFICULTY BENDING OR STOOPING (STANDARD HEIGHT UNIT) OR OTHER MEANS TO ACHIEVE EQUIVALENT ACCESSIBILITY FOR BOTH (PROVIDING AN ACCESSIBLE WATER COOLER FOR EXAMPLE).

PROVIDE DRINKING FOUNTAINS IN ALCOVE OUT OF COMMON PATH OF TRAVEL BETWEEN DRINKING FOUNTAINS: 2'-3" (21") MINIMUM.

ACCESSIBLE SEATING: WHEN PROVIDED AT FIXED OR BUILT-IN TABLES, COUNTERS OR WORK SURFACES, PROVIDE 5% MINIMUM BUT NOT LESS THAN ONE (1) ACCESSIBLE SEATING, DISTRIBUTED THROUGHOUT.

POINT-OF-SALE (POS) OR SERVICE COUNTERS: PROVIDE NOT LESS THAN ONE (1) UNIT TO BE ACCESSIBLE DISPERSED THROUGHOUT IF COUNTERS ARE DISPERSED.

SIGNAGE: REQUIRED ACCESSIBLE SIGNS (MINIMUM) EXCEPT BUILDING DIRECTORIES, MENU BOARDS, OR TEMPORARY SIGNS PROVIDE ACCESSIBLE SIGNS AS FOLLOWS:

ACCESSIBLE ENTRANCES: PROVIDE A 4 X 4" ACCESSIBILITY DECAL AT ALL ACCESSIBLE PUBLIC ENTRANCE DOORS CENTERED AT 60" AFF.

NON-ACCESSIBLE PUBLIC ENTRANCES: PROVIDE DIRECTIONAL SIGNS INDICATING LOCATION OF NEAREST ACCESSIBLE ENTRANCE.

NON-ACCESSIBLE TOILET ROOMS: PROVIDE DIRECTIONAL SIGNS INDICATING LOCATION OF NEAREST ACCESSIBLE UNITS.

ROOM (OR SPACE) SIGNS (INCLUDING TOILET ROOMS): PROVIDE RAISED PICTOGRAMS, TACTILE CHARACTERS AND BRAILLE TEXT.

ACCEPTABLE CHARACTERS: UPPER-CASE, LOWER-CASE OR A COMBINATION OF BOTH IN A SANS-SERIF CONVENTIONAL STYLE - NO ITALIC, OBLIQUE, SCRIPT, HIGHLY DECORATIVE OR OTHER UNUSUAL FONTS.

FINISH & CONTRAST: NON-GLARE WITH EITHER LIGHT CHARACTERS ON DARK BACKGROUND OR DARK CHARACTERS ON LIGHT BACKGROUND.

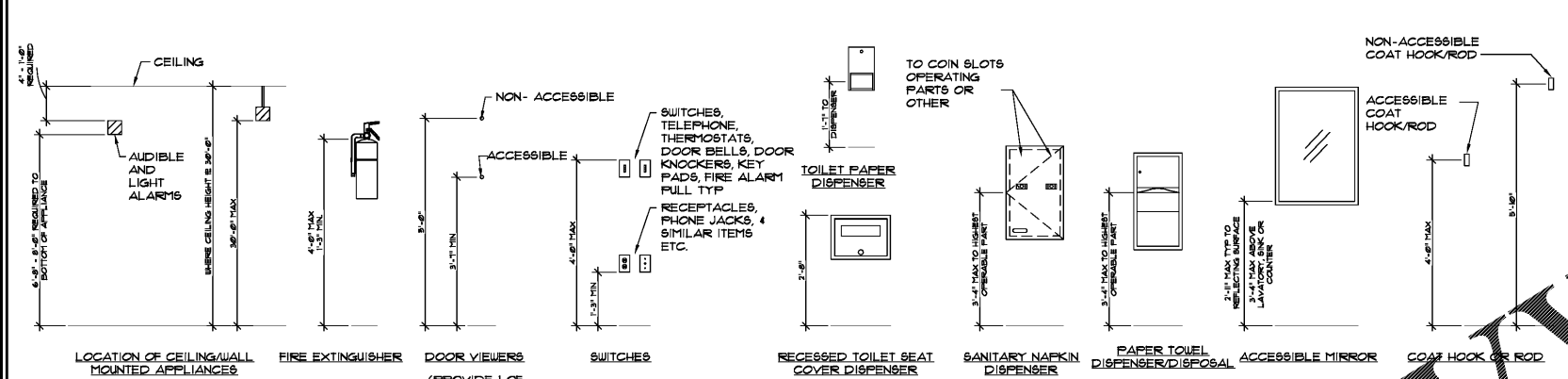
ILLUMINATION LEVEL AT ACCESSIBLE SIGNS: MINIMUM 10 FOOT-CANDLES.

PROVIDE CLEAR FLOOR AREA OF 18 X 18 INCHES CENTERED ON TACTILE CHARACTER SIGN BEYOND ARC OF DOOR SWING FROM CLOSED TO 45 DEGREE OPEN POSITION.

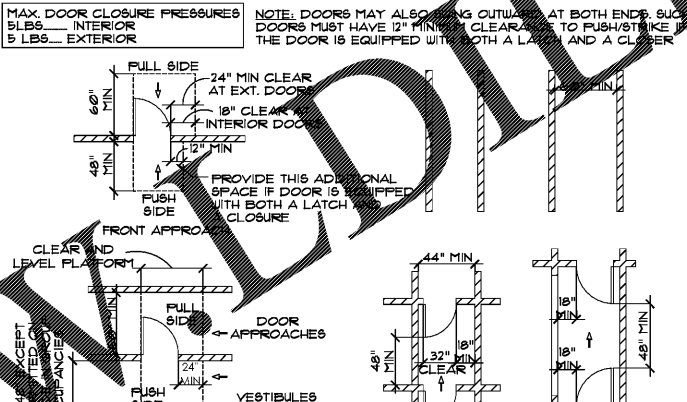
BRAILLE: CONTRACTED (GRADE 2) WITH INDICATION OF AN UPPER-CASE LETTER ONLY BEFORE THE FIRST WORD OF SENTENCES, PROPER NOUNS, AND NAMES, INDIVIDUAL LETTERS OF THE ALPHABET, INITIALS, OR ACRONYM.

**TOILET PARTITIONS FOR PUBLIC RESTROOMS**

**ACCESSIBLE TOILETS**



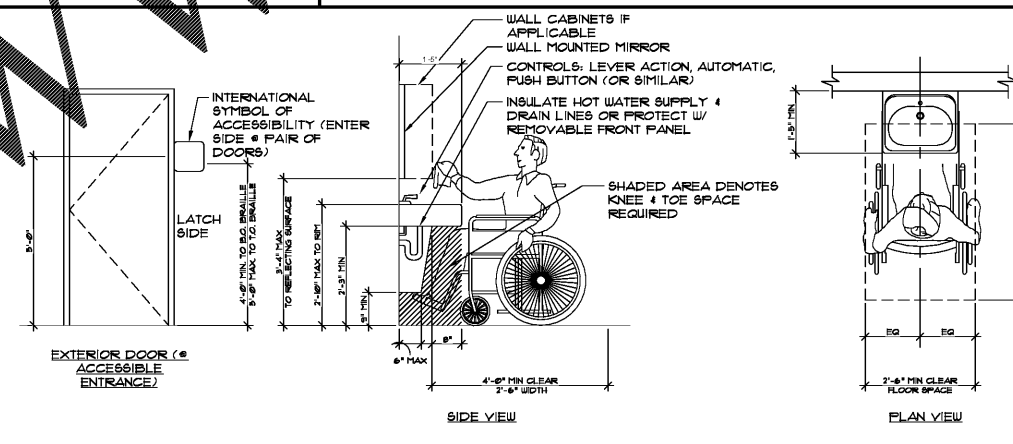
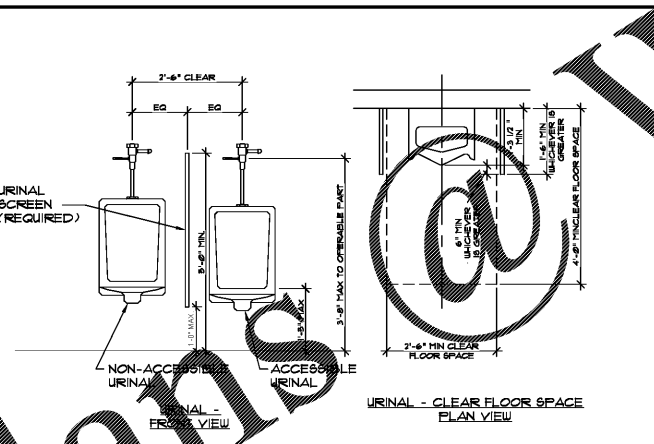
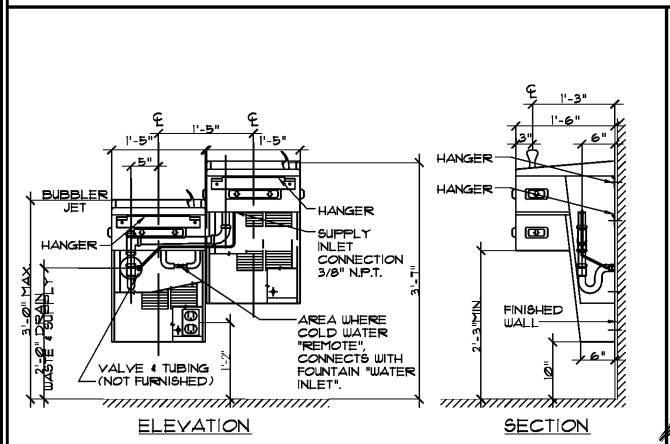
**FIXTURE MOUNTING HEIGHTS**



**DRINKING FOUNTAIN CLEARANCES**

**URINALS AND URINAL PARTITION**

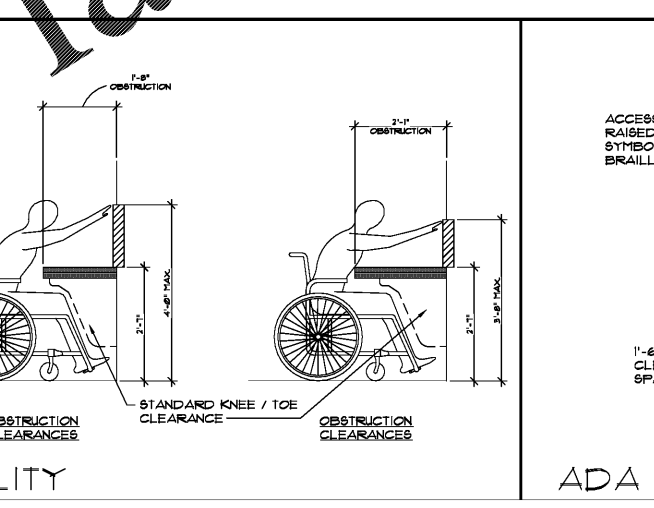
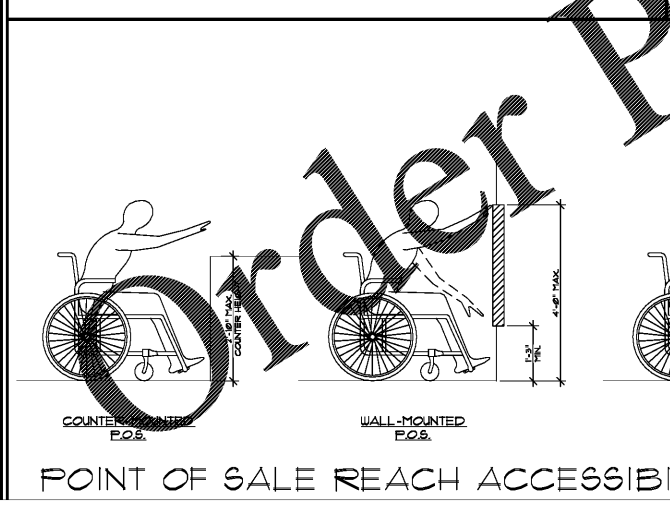
**ACCESSIBLE LAVATORY OR SINK**



**POINT OF SALE REACH ACCESSIBILITY**

**ADA SIGN DETAIL**

**ACCESSIBILITY GENERAL NOTES**



**ACCESSIBILITY GENERAL NOTES**

**ALARMS:** IF EMERGENCY WARNING SYSTEMS ARE PROVIDED, PROVIDE BOTH AUDIBLE AND VISUAL ALARMS IN ANY COMMON-USE AREAS, (INCLUDING BUT NOT LIMITED TO RESTROOMS, MEETING ROOMS, HALLWAYS, AND LOBBIES). PERMANENTLY CONNECT ALARM SYSTEMS TO THE BUILDING ELECTRICAL POWER AND LIGHTING SYSTEM AS APPROPRIATE.

IF AUDIBLE ALARMS ARE PROVIDED, THEY MUST PRODUCE SOUND EXCEEDING THE PREVAILING EQUIVALENT SOUND LEVEL OF A SPACE BY AT LEAST 15 DBA OR EXCEED ANY MAXIMUM SOUND LEVEL WITH A DURATION OF 60 SECONDS BY 5 DBA, WHICHEVER IS LOUDER (NOT EXCEEDING 120dbA).

IF VISUAL ALARMS ARE PROVIDED, PROVIDE UNFILTERED OR CLEAR-FILTERED WHITE XENON-STROBE TYPE LAMPS OR EQUIVALENT, WITH 62 SECOND MAXIMUM PULSE DURATION AND MAXIMUM DUTY CYCLE OF 40 PERCENT, PROVIDING A MINIMUM BRIGHTNESS INTENSITY OF 15 CANDELA WITH A FLASH RATE BETWEEN 1 AND 3 HZ. LOCATE UNITS NO MORE THAN 6'-10" (80") AFF OR 6'-0" BELOW CEILING (WHICHEVER IS LOWER). LOCATE 50 FEET MAXIMUM FROM ANY POINT WITHIN A SPACE OR COMMON CORRIDOR, OR IN LARGE SPACES OVER 100 FEET ACROSS (SUCH AS AUDITORIUMS) WITHOUT OBSTRUCTIONS 6 FT AFF. LOCATE AROUND ROOM PERIMETER AT MAXIMUM 100 FT CENTERS. ALL STROBES IN ROOM MUST BE SYNCHRONIZED.

NON-ACCESSIBLE PUBLIC ENTRANCES: PROVIDE DIRECTIONAL SIGNS INDICATING LOCATION OF NEAREST ACCESSIBLE ENTRANCE.

NON-ACCESSIBLE TOILET ROOMS: PROVIDE DIRECTIONAL SIGNS INDICATING LOCATION OF NEAREST ACCESSIBLE UNITS.

ROOM (OR SPACE) SIGNS (INCLUDING TOILET ROOMS): PROVIDE RAISED PICTOGRAMS, TACTILE CHARACTERS AND BRAILLE TEXT.

ACCEPTABLE CHARACTERS: UPPER-CASE, LOWER-CASE OR A COMBINATION OF BOTH IN A SANS-SERIF CONVENTIONAL STYLE - NO ITALIC, OBLIQUE, SCRIPT, HIGHLY DECORATIVE OR OTHER UNUSUAL FONTS.

FINISH & CONTRAST: NON-GLARE WITH EITHER LIGHT CHARACTERS ON DARK BACKGROUND OR DARK CHARACTERS ON LIGHT BACKGROUND.

ILLUMINATION LEVEL AT ACCESSIBLE SIGNS: MINIMUM 10 FOOT-CANDLES.

PROVIDE CLEAR FLOOR AREA OF 18 X 18 INCHES CENTERED ON TACTILE CHARACTER SIGN BEYOND ARC OF DOOR SWING FROM CLOSED TO 45 DEGREE OPEN POSITION.

BRAILLE: CONTRACTED (GRADE 2) WITH INDICATION OF AN UPPER-CASE LETTER ONLY BEFORE THE FIRST WORD OF SENTENCES, PROPER NOUNS, AND NAMES, INDIVIDUAL LETTERS OF THE ALPHABET, INITIALS, OR ACRONYM.

**ACCESSIBILITY GENERAL NOTES**

ACCESSIBLE ROUTE WITHIN BUILDING: SPACES WITHIN BUILDINGS: PROVIDE AN ACCESSIBLE ROUTE TO EACH SPACE OR PORTION WITHIN A BUILDING, TO ACCESSIBLE BUILDING ENTRANCES, NOT PASSING THROUGH KITCHENS, STORAGE ROOMS, RESTROOMS, CLOSETS OR SIMILAR SPACES (IF ONLY ONE ACCESSIBLE ROUTE IS PROVIDED).

CONSTRUCT WORK AREAS USED ONLY BY EMPLOYEES SO THAT INDIVIDUALS WITH DISABILITIES CAN APPROACH, ENTER AND EXIT THE AREA EXCEPT AT WORK AREAS LESS THAN 150 SF AND ELEVATED SEVEN (7) INCHES OR MORE ABOVE GROUND OR FINISH FLOOR - WHEN THE RAISED ELEVATION IS ESSENTIAL, THE PROTECTION OF THE WORK-AREA - PER CBC.

PROVIDE ACCESSIBLE ROUTES AT ALL COMMON-USE CIRCULATION PATHS WITHIN EMPLOYEE WORK AREAS UNLESS WORK AREA IS LESS THAN 300 SF AND DEFINED BY PERMANENTLY INSTALLED PARTITION WALLS, COUNTERS OR PARTITIONS.

ACCESSIBILITY IS NOT REQUIRED TO NON-OCCUPIED SPACES ACCESSED ONLY BY EMPLOYEES OR MAINTENANCE PERSONNEL OR FREIGHT HANDLING PERSONNEL THAT ARE NOT PERMANENTLY OPEN TO SERVICE PERSONNEL FOR MAINTENANCE PURPOSES, INCLUDING BUT NOT LIMITED TO ELEVATOR PITTS, ELEVATOR ENTRANCES, AND PIPING OR EQUIPMENT AT WALLS.

ACCESSIBLE ROUTE WITHIN BUILDING: ACCESSIBLE ROUTES MAY CONSIST OF ONE OR MORE OF THESE COMPONENTS: WALKING SURF, ELEVATORS AND PLATFORM LIFTS.

MINIMUM CORRIDOR WIDTH: 3'-0" MINIMUM WIDTH OF ACCESSIBLE AISLES: 3'-0"

CARPETED WALKING SURFACES: BROADLOOM OR CARPET TILE WITH FIBER CUSHIONPAD (OR WITHOUT CUSHION PAD) WITH LEVEL LOOP, TEXTURED LOOP LEVEL CUT, OR LEVEL CUT/ANCUIT PILE TEXTURE WITH 1/2" MAX PILE-HEIGHT. SECURELY ATTACH TO SUBSTRATE AND PROVIDE BEVELED EDGE-TRIM ALONG ENTIRE LENGTH OF EXPOSED EDGE PER ABOVE.

AREA-OF-RESCUE ASSISTANCE: PROVIDE AN "AREA-OF-RESCUE-ASSISTANCE" AT NON-ACCESSIBLE EXIT-DISCHARGE DOORS - EXCEPT IN BUILDINGS WITH A SUPPLY-LED AUTOMATIC FIRE-SUPPRESSION SYSTEM.

MINIMUM SIZE: PROVIDE MINIMUM OF TWO (2) EA 2'-6" X 4'-0" AREAS OR ONE (1) EACH PER 200 OCCUPANTS PER STORY SERVED NOT ENCRoACHING ON ANY REQUIRED EXIT WIDTH.

TOILET ROOMS OR COMPARTMENTS: UNI-SEX TOILET ROOM: PROVIDE AN ACCESSIBLE FACILITY WITH A SINGLE WATER-CLOSET AND LAVATORY IN ANY MERCANTILE OR ASSEMBLY OCCUPANCY WHERE A TOTAL OF SIX (6) OR MORE MALE AND FEMALE WATER-CLOSETS ARE REQUIRED (PER CBC).

PROVIDE UNI-SEX AND SINGLE-USE TOILET ROOMS WITH DOOR LOCKING FROM INSIDE.

WATER-CLOSET COMPARTMENTS: PROVIDE A MINIMUM OF ONE (1) WHEELCHAIR-ACCESSIBLE COMPARTMENT AND WHEN OVER SIX (6) WATER-CLOSETS + URINALS ARE PROVIDED IN A TOILET ROOM PROVIDE ONE (1) TO BE AMBULATORY-ACCESSIBLE IN ADDITION TO THE WHEELCHAIR-ACCESSIBLE UNIT.

SINKS: PROVIDE NO LESS THAN ONE (1) ACCESSIBLE SINK (OR 5% OF TOTAL) WHERE PROVIDED (MOP OR SERVICE-SINKS ARE NOT REQUIRED TO BE ACCESSIBLE).

DRINKING FOUNTAINS: IF ONLY ONE DRINKING FOUNTAIN IS PROVIDED IN A SPACE OR BUILDING, PROVIDE A "DUAL HI-LOW" TYPE UNIT ACCESSIBLE TO BOTH WHEELCHAIR USERS AND TO PERSONS WITH DIFFICULTY BENDING OR STOOPING (STANDARD HEIGHT UNIT) OR OTHER MEANS TO ACHIEVE EQUIVALENT ACCESSIBILITY FOR BOTH (PROVIDING AN ACCESSIBLE WATER COOLER FOR EXAMPLE).

PROVIDE DRINKING FOUNTAINS IN ALCOVE OUT OF COMMON PATH OF TRAVEL BETWEEN DRINKING FOUNTAINS: 2'-3" (21") MINIMUM.

ACCESSIBLE SEATING: WHEN PROVIDED AT FIXED OR BUILT-IN TABLES, COUNTERS OR WORK SURFACES, PROVIDE 5% MINIMUM BUT NOT LESS THAN ONE (1) ACCESSIBLE SEATING, DISTRIBUTED THROUGHOUT.

POINT-OF-SALE (POS) OR SERVICE COUNTERS: PROVIDE NOT LESS THAN ONE (1) UNIT TO BE ACCESSIBLE DISPERSED THROUGHOUT IF COUNTERS ARE DISPERSED.

SIGNAGE: REQUIRED ACCESSIBLE SIGNS (MINIMUM) EXCEPT BUILDING DIRECTORIES, MENU BOARDS, OR TEMPORARY SIGNS PROVIDE ACCESSIBLE SIGNS AS FOLLOWS:

ACCESSIBLE ENTRANCES: PROVIDE A 4 X 4" ACCESSIBILITY DECAL AT ALL ACCESSIBLE PUBLIC ENTRANCE DOORS CENTERED AT 60" AFF.

NON-ACCESSIBLE PUBLIC ENTRANCES: PROVIDE DIRECTIONAL SIGNS INDICATING LOCATION OF NEAREST ACCESSIBLE ENTRANCE.

NON-ACCESSIBLE TOILET ROOMS: PROVIDE DIRECTIONAL SIGNS INDICATING LOCATION OF NEAREST ACCESSIBLE UNITS.

ROOM (OR SPACE) SIGNS (INCLUDING TOILET ROOMS): PROVIDE RAISED PICTOGRAMS, TACTILE CHARACTERS AND BRAILLE TEXT.

ACCEPTABLE CHARACTERS: UPPER-CASE, LOWER-CASE OR A COMBINATION OF BOTH IN A SANS-SERIF CONVENTIONAL STYLE - NO ITALIC, OBLIQUE, SCRIPT, HIGHLY DECORATIVE OR OTHER UNUSUAL FONTS.

FINISH & CONTRAST: NON-GLARE WITH EITHER LIGHT CHARACTERS ON DARK BACKGROUND OR DARK CHARACTERS ON LIGHT BACKGROUND.

ILLUMINATION LEVEL AT ACCESSIBLE SIGNS: MINIMUM 10 FOOT-CANDLES.

PROVIDE CLEAR FLOOR AREA OF 18 X 18 INCHES CENTERED ON TACTILE CHARACTER SIGN BEYOND ARC OF DOOR SWING FROM CLOSED TO 45 DEGREE OPEN POSITION.

BRAILLE: CONTRACTED (GRADE 2) WITH INDICATION OF AN UPPER-CASE LETTER ONLY BEFORE THE FIRST WORD OF SENTENCES, PROPER NOUNS, AND NAMES, INDIVIDUAL LETTERS OF THE ALPHABET, INITIALS, OR ACRONYM.

**POINT OF SALE REACH ACCESSIBILITY**

**ADA SIGN DETAIL**

**ACCESSIBILITY GENERAL NOTES**

**ACCESSIBILITY GENERAL NOTES**

ACCESSIBLE ROUTE WITHIN BUILDING: SPACES WITHIN BUILDINGS: PROVIDE AN ACCESSIBLE ROUTE TO EACH SPACE OR PORTION WITHIN A BUILDING, TO ACCESSIBLE BUILDING ENTRANCES, NOT PASSING THROUGH KITCHENS, STORAGE ROOMS, RESTROOMS, CLOSETS OR SIMILAR SPACES (IF ONLY ONE ACCESSIBLE ROUTE IS PROVIDED).

CONSTRUCT WORK AREAS USED ONLY BY EMPLOYEES SO THAT INDIVIDUALS WITH DISABILITIES CAN APPROACH, ENTER AND EXIT THE AREA EXCEPT AT WORK AREAS LESS THAN 150 SF AND ELEVATED SEVEN (7) INCHES OR MORE ABOVE GROUND OR FINISH FLOOR - WHEN THE RAISED ELEVATION IS ESSENTIAL, THE PROTECTION OF THE WORK-AREA - PER CBC.

PROVIDE ACCESSIBLE ROUTES AT ALL COMMON-USE CIRCULATION PATHS WITHIN EMPLOYEE WORK AREAS UNLESS WORK AREA IS LESS THAN 300 SF AND DEFINED BY PERMANENTLY INSTALLED PARTITION WALLS, COUNTERS OR PARTITIONS.

ACCESSIBILITY IS NOT REQUIRED TO NON-OCCUPIED SPACES ACCESSED ONLY BY EMPLOYEES OR MAINTENANCE PERSONNEL OR FREIGHT HANDLING PERSONNEL THAT ARE NOT PERMANENTLY OPEN TO SERVICE PERSONNEL FOR MAINTENANCE PURPOSES, INCLUDING BUT NOT LIMITED TO ELEVATOR PITTS, ELEVATOR ENTRANCES, AND PIPING OR EQUIPMENT AT WALLS.

ACCESSIBLE ROUTE WITHIN BUILDING: ACCESSIBLE ROUTES MAY CONSIST OF ONE OR MORE OF THESE COMPONENTS: WALKING SURF, ELEVATORS AND PLATFORM LIFTS.

MINIMUM CORRIDOR WIDTH: 3'-0" MINIMUM WIDTH OF ACCESSIBLE AISLES: 3'-0"

CARPETED WALKING SURFACES: BROADLOOM OR CARPET TILE WITH FIBER CUSHIONPAD (OR WITHOUT CUSHION PAD) WITH LEVEL LOOP, TEXTURED LOOP LEVEL CUT, OR LEVEL CUT/ANCUIT PILE TEXTURE WITH 1/2" MAX PILE-HEIGHT. SECURELY ATTACH TO SUBSTRATE AND PROVIDE BEVELED EDGE-TRIM ALONG ENTIRE LENGTH OF EXPOSED EDGE PER ABOVE.

AREA-OF-RESCUE ASSISTANCE: PROVIDE AN "AREA-OF-RESCUE-ASSISTANCE" AT NON-ACCESSIBLE EXIT-DISCHARGE DOORS - EXCEPT IN BUILDINGS WITH A SUPPLY-LED AUTOMATIC FIRE-SUPPRESSION SYSTEM.

MINIMUM SIZE: PROVIDE MINIMUM OF TWO (2) EA 2'-6" X 4'-0" AREAS OR ONE (1) EACH PER 200 OCCUPANTS PER STORY SERVED NOT ENCRoACHING ON ANY REQUIRED EXIT WIDTH.

TOILET ROOMS OR COMPARTMENTS: UNI-SEX TOILET ROOM: PROVIDE AN ACCESSIBLE FACILITY WITH A SINGLE WATER-CLOSET AND LAVATORY IN ANY MERCANTILE OR ASSEMBLY OCCUPANCY WHERE A TOTAL OF SIX (6) OR MORE MALE AND FEMALE WATER-CLOSETS ARE REQUIRED (PER CBC).

PROVIDE UNI-SEX AND SINGLE-USE TOILET ROOMS WITH DOOR LOCKING FROM INSIDE.

WATER-CLOSET COMPARTMENTS: PROVIDE A MINIMUM OF ONE (1) WHEELCHAIR-ACCESSIBLE COMPARTMENT AND WHEN OVER SIX (6) WATER-CLOSETS + URINALS ARE PROVIDED IN A TOILET ROOM PROVIDE ONE (1) TO BE AMBULATORY-ACCESSIBLE IN ADDITION TO THE WHEELCHAIR-ACCESSIBLE UNIT.

SINKS: PROVIDE NO LESS THAN ONE (1) ACCESSIBLE SINK (OR 5% OF TOTAL) WHERE PROVIDED (MOP OR SERVICE-SINKS ARE NOT REQUIRED TO BE ACCESSIBLE).

DRINKING FOUNTAINS: IF ONLY ONE DRINKING FOUNTAIN IS PROVIDED IN A SPACE OR BUILDING, PROVIDE A "DUAL HI-LOW" TYPE UNIT ACCESSIBLE TO BOTH WHEELCHAIR USERS AND TO PERSONS WITH DIFFICULTY BENDING OR STOOPING (STANDARD HEIGHT UNIT) OR OTHER MEANS TO ACHIEVE EQUIVALENT ACCESSIBILITY FOR BOTH (PROVIDING AN ACCESSIBLE WATER COOLER FOR EXAMPLE).

PROVIDE DRINKING FOUNTAINS IN ALCOVE OUT OF COMMON PATH OF TRAVEL BETWEEN DRINKING FOUNTAINS: 2'-3" (21") MINIMUM.

ACCESSIBLE SEATING: WHEN PROVIDED AT FIXED OR BUILT-IN TABLES, COUNTERS OR WORK SURFACES, PROVIDE 5% MINIMUM BUT NOT LESS THAN ONE (1) ACCESSIBLE SEATING, DISTRIBUTED THROUGHOUT.

POINT-OF-SALE (POS) OR SERVICE COUNTERS: PROVIDE NOT LESS THAN ONE (1) UNIT TO BE ACCESSIBLE DISPERSED THROUGHOUT IF COUNTERS ARE DISPERSED.

SIGNAGE: REQUIRED ACCESSIBLE SIGNS (MINIMUM) EXCEPT BUILDING DIRECTORIES, MENU BOARDS, OR TEMPORARY SIGNS PROVIDE ACCESSIBLE SIGNS AS FOLLOWS:

ACCESSIBLE ENTRANCES: PROVIDE A 4 X 4" ACCESSIBILITY DECAL AT ALL ACCESSIBLE PUBLIC ENTRANCE DOORS CENTERED AT 60" AFF.

NON-ACCESSIBLE PUBLIC ENTRANCES: PROVIDE DIRECTIONAL SIGNS INDICATING LOCATION OF NEAREST ACCESSIBLE ENTRANCE.

NON-ACCESSIBLE TOILET ROOMS: PROVIDE DIRECTIONAL SIGNS INDICATING LOCATION OF NEAREST ACCESSIBLE UNITS.

ROOM (OR SPACE) SIGNS (INCLUDING TOILET ROOMS): PROVIDE RAISED PICTOGRAMS, TACTILE CHARACTERS AND BRAILLE TEXT.

ACCEPTABLE CHARACTERS: UPPER-CASE, LOWER-CASE OR A COMBINATION OF BOTH IN A SANS-SERIF CONVENTIONAL STYLE - NO ITALIC, OBLIQUE, SCRIPT, HIGHLY DECORATIVE OR OTHER UNUSUAL FONTS.

FINISH & CONTRAST: NON-GLARE WITH EITHER LIGHT CHARACTERS ON DARK BACKGROUND OR DARK CHARACTERS ON LIGHT BACKGROUND.

ILLUMINATION LEVEL AT ACCESSIBLE SIGNS: MINIMUM 10 FOOT-CANDLES.

PROVIDE CLEAR FLOOR AREA OF 18 X 18 INCHES CENTERED ON TACTILE CHARACTER SIGN BEYOND ARC OF DOOR SWING FROM CLOSED TO 45 DEGREE OPEN POSITION.

BRAILLE: CONTRACTED (GRADE 2) WITH INDICATION OF AN UPPER-CASE LETTER ONLY BEFORE THE FIRST WORD OF SENTENCES, PROPER NOUNS, AND NAMES, INDIVIDUAL LETTERS OF THE ALPHABET, INITIALS, OR ACRONYM.

ALEXANDRA MATIS INCARD  
10755 SANDHILL ROAD  
DALLAS, TEXAS 75238  
214.343.1400

#81973  
SUPER CUTS  
TENANT BUILD-OUT  
LAKESIDE VILLAGE  
7790 WINTER GARDEN VINELAND RD, SUITE 300  
WINDERMERE, FL 34786

**SUPER CUTS**

GENERAL ACCESSIBILITY

DATE ISSUED

TENANT REVIEW 12.08.17

LANDLORD REVIEW 12.13.17

PERMIT 12.13.17

DRAWN BY BB

CHECKED BY AM

JOB NO. 17-678

G-003