



CONSULTANT:

SEAL: HENRY D. MONTAGUE, PE 78172

THIS DRAWING SHALL NOT BE USED FOR CONSTRUCTION PURPOSES UNTIL THE SEAL AND SIGNATURE OF THE RESPONSIBLE REGISTRANT APPEARS ON THE DRAWING, AND PROPER PERMIT FORMS AND RELATED FEES ARE TRANSMITTED BY THE OWNER, OWNER'S AGENT OR CONTRACTOR TO THE AUTHORITY HAVING JURISDICTION.

DATE	ISSUED FOR	REV
10/12/2017	PLANNING SUBMITTAL	
10/27/2017	PEMB COORDINATION	
12/15/2017	PLANNING RE-SUBMITTAL	01
12/15/2017	PERMIT	

<b>Project Manager</b> B. COLBURN	<b>Drawn</b> G. COLLINS
<b>Project Leader</b> B. COLBURN	<b>Checked</b> M. GOOD
<b>Date</b> 10/01/2017	<b>Dept Mgr Approval</b> M. GOOD

**Client**  
Palmetto NFM - Hancock Bridge PKWY, LLC.  
  
P.O. BOX 1615  
THOMASVILLE, GA 31792  
Office: (863) 808-1320  
Contact: Jeff Lazenby

**Project**  
DOLLAR GENERAL  
4055 Hancock Bridge Parkway  
North Fort Myers (Lee County), FL  
Section 9, Township 44S., Range 24E.

**Drawing Title**

SITE LIGHTING PLAN

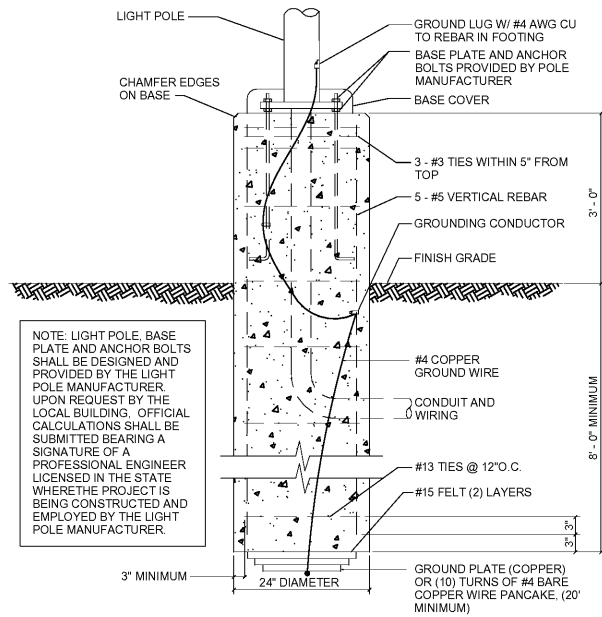
DO NOT SCALE DRAWING

<b>Project No.</b> JCDT17.0313.00	<b>Drawing No.</b> ES1
--------------------------------------	---------------------------

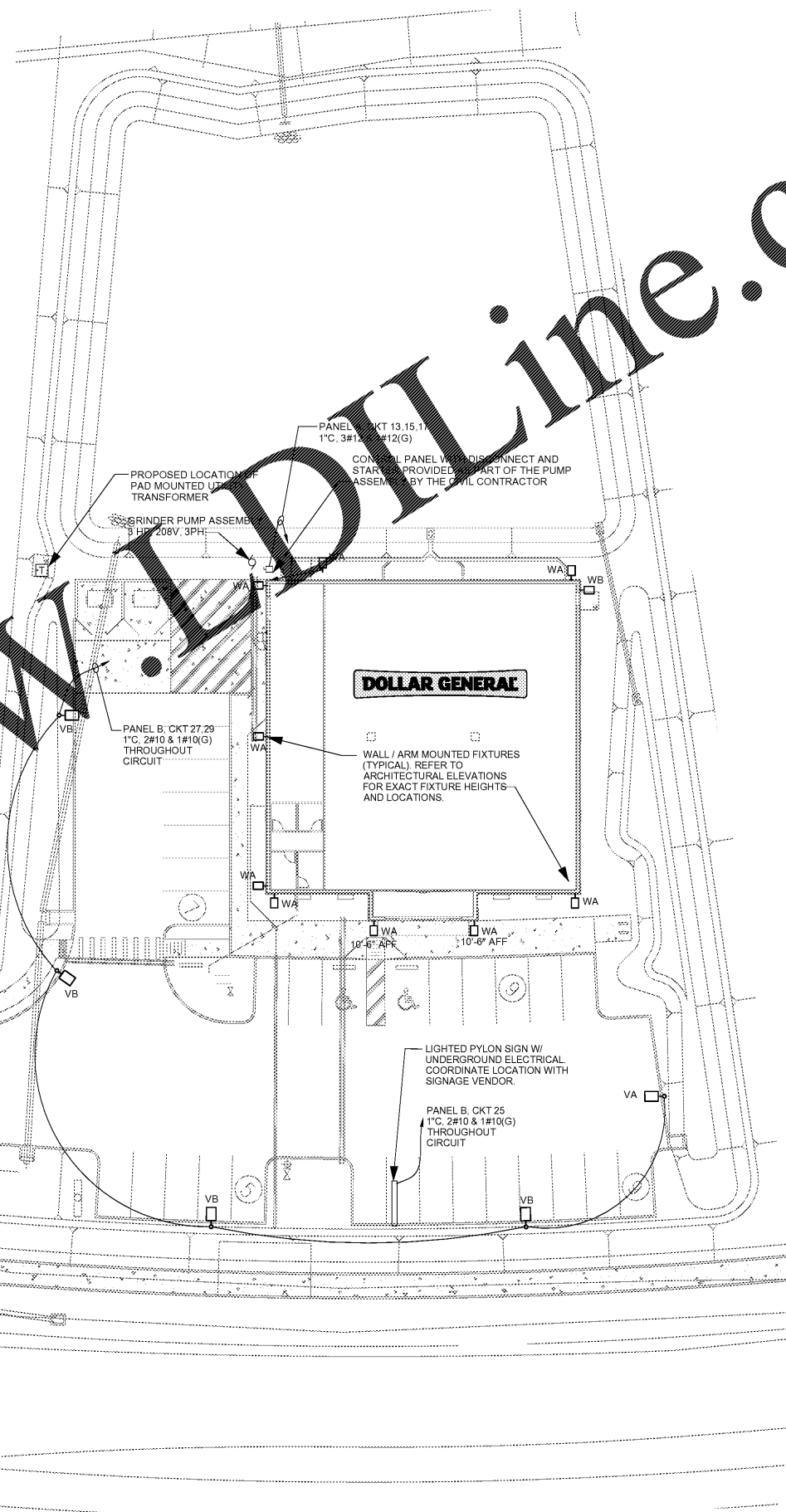
LIGHT FIXTURE DESCRIPTION		
TYPE	DESCRIPTION	COUNT
VA	SINGLE HEAD, POLE / ARM MOUNTED LED PARKING LOT FIXTURE, BEACON LIGHTING PRODUCTS: #URBAN SERIES #URB-CAP21-24NB-55-5K-T4 WITH DARK BRONZE TEXTURED FINISH, TYPE 4 OPTICS AND 5000 LED COLOR. FIXTURE MOUNTED ON AN 22" DARK BRONZE TEXTURED FINISH POLE AND A SINGLE ARM MOUNT #AA-55S-S5B. POLE TO BE BEACON LIGHTING #RSA-B-S-22-60-C. POLE BASE 3'-0".	1
VB	SINGLE HEAD, POLE / ARM MOUNTED LED PARKING LOT FIXTURE, BEACON LIGHTING PRODUCTS: #URBAN SERIES #URB-CAP21-36NB-80-5K-T4 WITH DARK BRONZE TEXTURED FINISH, TYPE 4 OPTICS AND 5000 LED COLOR. FIXTURE MOUNTED ON AN 22" DARK BRONZE TEXTURED FINISH POLE AND A SINGLE ARM MOUNT #AA-55S-S5B. POLE TO BE BEACON LIGHTING #RSA-B-S-22-60-C. POLE BASE 3'-0".	4
WA	WALL / ARM MOUNTED LED FIXTURE, BEACON LIGHTING PRODUCTS: #URBAN SERIES #URB-CAP21-24NB-27-5K-T3 WITH DARK BRONZE TEXTURED FINISH, TYPE 4 OPTICS AND 5000 LED COLOR. FIXTURE MOUNTED ON AN 27" DARK BRONZE TEXTURED FINISH ARM WITH WALL PLATE. MOUNTED HEIGHT 15'-6" U.N.O. ON PLAN.	9
WB	WALL / ARM MOUNTED LED FIXTURE, BEACON LIGHTING PRODUCTS: #URBAN SERIES #URB-CAP21-24NB-27-5K-T2 WITH DARK BRONZE TEXTURED FINISH, TYPE 3 OPTICS AND 5000 LED COLOR. FIXTURE MOUNTED ON AN 27" DARK BRONZE TEXTURED FINISH ARM WITH WALL PLATE. MOUNTED HEIGHT 15'-6".	1

**SITE LIGHTING**

1. FINAL SIGN CONNECTION AND UNDERGROUND CONDUIT IS LANDLORD RESPONSIBILITY. PROVIDE CONDUIT FROM THE ELECTRICAL PANEL TO LOCATION OF THE PYLON SIGN BASE. BURY CONDUIT UNDER PARKING AREA. THE CONDUIT IS TO BE 1" AND HAVE ONE SET TO 100' WIRE WITH GROUND AND A 20-AMP TWO POLE BREAKER AT THE PANEL. A TEMPORARY 3' TALL STAKE SHALL BE PROVIDED TO DESIGNATE THE PYLON SIGN LOCATION UNTIL THE SIGN IS PERMANENTLY INSTALLED. REMOVE POST AFTER SIGN IS INSTALLED.



2 POLE FOUNDATION DETAIL  
SCALE NONE



1 SITE LIGHTING PLAN  
SCALE 1" = 20'-0"

Order Plans @